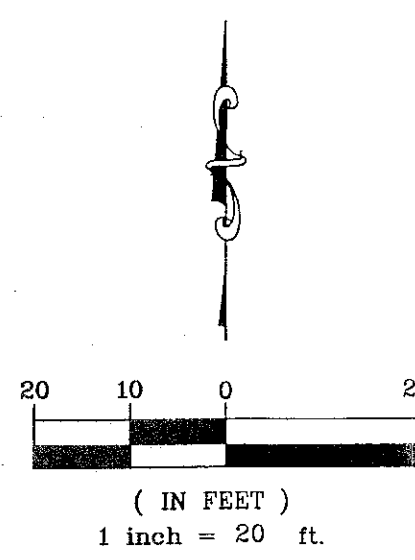
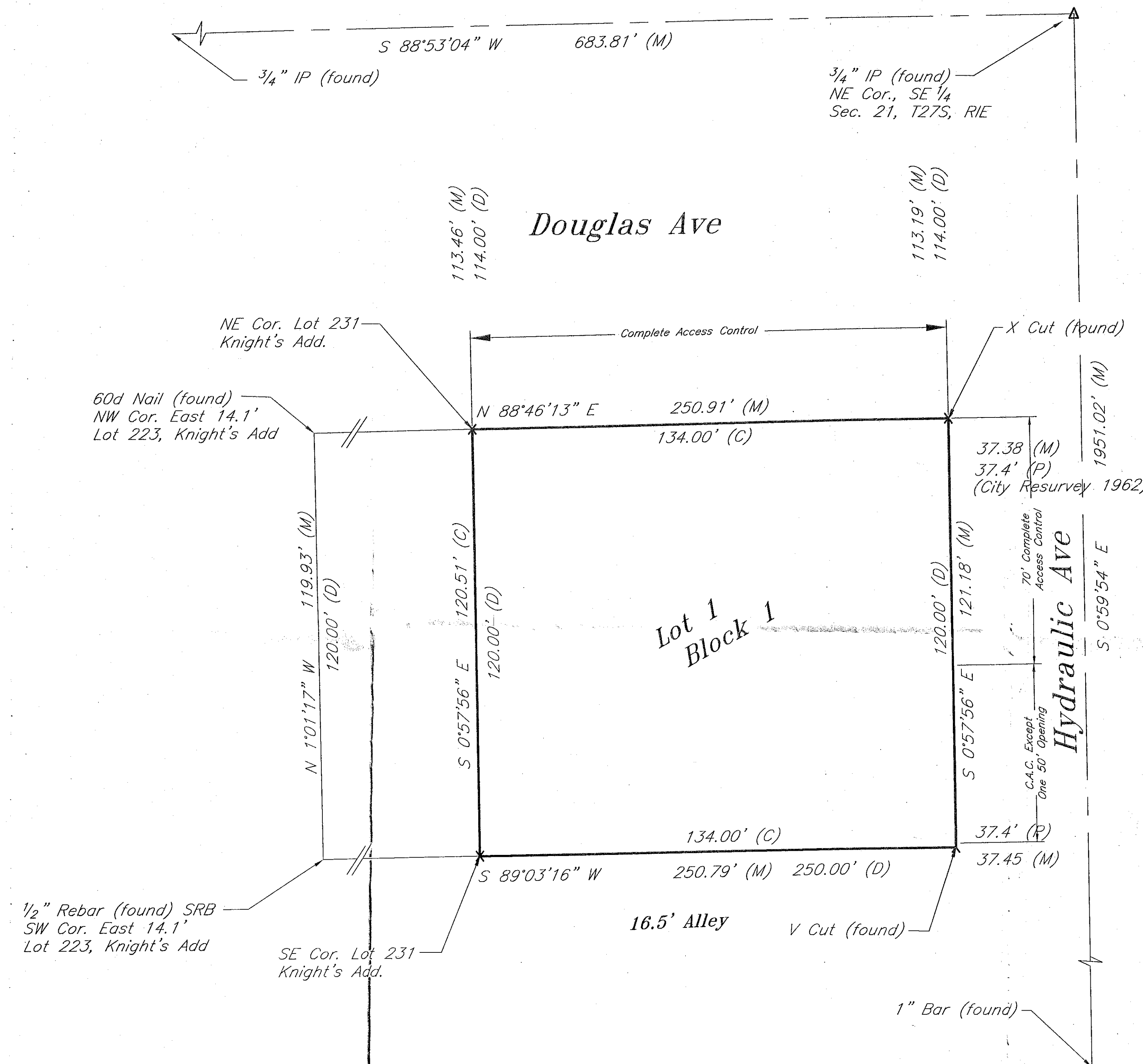


FINAL TRACING REC'D 4.23.14

Devlin Auto Realty Addition Wichita, Sedgwick County, Kansas

Part of the NE 1/4 of the NE 1/4 of the SE 1/4, Section 21, Township 27 South, Range 1 East of the 6th. P.M.



LEGEND:
 M Measured
 C Calculated
 D Deeded
 X X Cut (set)

BENCHMARKS:
 COW Benchmark located on the Northwest corner of the traffic signal light on the Southwest corner of the intersection of Hydraulic and Douglas.
 Elev = 1296.78 ft NAVD 88

State of Kansas }
County of Sedgwick } SS

State of Kansas }
City of Wichita } SS

I, Bradley C. Ward, a licensed land surveyor of the State of Kansas, do hereby certify that the following described tract of land was surveyed on the 6th day of March, 2014 and the accompanying final plat prepared and that all the monuments shown herein actually exist and their positions are correctly shown to the best of my knowledge and belief:

This plat of Devlin Auto Realty Addition, Wichita, Sedgwick County, Kansas, has been submitted to and approved by the Wichita-Sedgwick County Metropolitan Area Planning Commission, Wichita, Kansas. Dated this _____ day of _____, 2014.
Wichita-Sedgwick County Metropolitan Area Planning Commission.

Don Klausmeyer, Chair

John L. Schlegel, Secretary

State of Kansas }
City of Wichita } SS

This plat approved and all dedications shown hereon accepted by the City Council of the City of Wichita, Kansas, this _____ day of _____, 2014.

At the Direction of the City Council

Carl Brewer, Mayor

Karen Sublett, City Clerk

Entered on transfer record this _____ day of _____, 2014.

Kelly B. Arnold, County Clerk

State of Kansas }
County of Sedgwick } SS

This is to certify that this plat has been filed for record in the Office of the Register of Deeds this _____ day of _____, 2014, at _____ o'clock _____ M; and is duly recorded.

Bill Meek, Register of Deeds

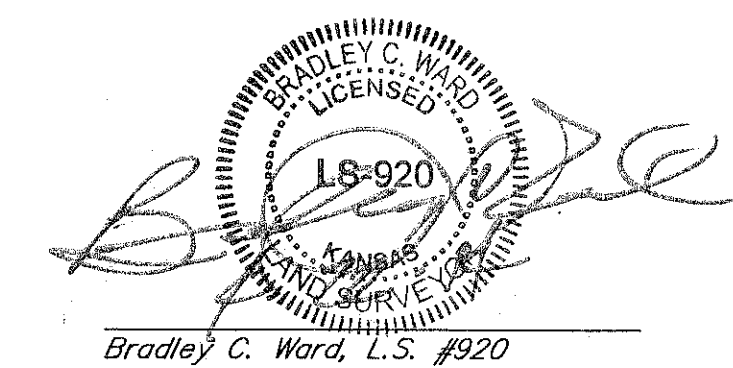
Tonya Buckingham, Deputy

Reviewed in accordance with K.S.A. 58-2005 on this _____ day of _____, 2014.

LEGAL DESCRIPTION

Beginning 114 feet South and 37.4 feet West of the Northeast Corner of the Southeast Quarter, Section 21, Township 27 South, Range 1 East, of the 6th Principal Meridian, Sedgwick County, Kansas; thence South, parallel with the East line of said Quarter, a distance of 120 feet; thence West, parallel with the North line of said Quarter, a distance of 134 feet, to the Southeast corner of Lot 231 of Knight's Addition, to the City of Wichita, Sedgwick County, Kansas; thence North, on the East line of said Lot 231, a distance of 120 feet, to the Northeast corner of said Lot 231; thence East, parallel to the North line of said Southeast Quarter, a distance of 134 feet, to the Point of Beginning.

All easements and rights-of-way within said tract are hereby vacated by virtue of KSA 12-512b, as amended.



Bradley C. Ward, L.S. #920

State of Kansas }
County of Sedgwick } SS

Know all men by these presents, that we, the undersigned, have caused the land described in the surveyor's certificate to be platted into a Lot and Block, to be known as Devlin Auto Realty Addition, Wichita, Sedgwick County, Kansas. The streets are hereby dedicated to and for the use of the public as denoted on the plat. Any easements are hereby granted as indicated for constructing, maintaining, operating, and repairing public utilities. The access controls are hereby granted to the appropriate governing body as shown hereon. A drainage plan has been developed for the plat and shall remain at established grades or as modified with the approval of the applicable City or County Engineer, and unobstructed to allow for the conveyance of stormwater. And further that the land contained herein is held and shall be conveyed subject to any applicable restrictions, reservations and covenants now on file or hereafter filed in the Office of the Register of Deeds of Sedgwick County, Kansas.

By: _____
Tim Devlin, Owner
Devlin Auto Realty Inc.

State of Kansas }
County of Sedgwick } SS

This instrument was acknowledged before me on this 22nd day of April, 2014, by Tim Devlin, owner, Devlin Auto Realty Inc.

Notary Public

My Commission Expires: 11-18-17

Tricia L. Robello, L.S. #1246
Deputy County Surveyor
Sedgwick County, Kansas

KEMILLER
 ENGINEERING PA
 117 E. Lewis, Wichita, KS 67202 (316)264-0242