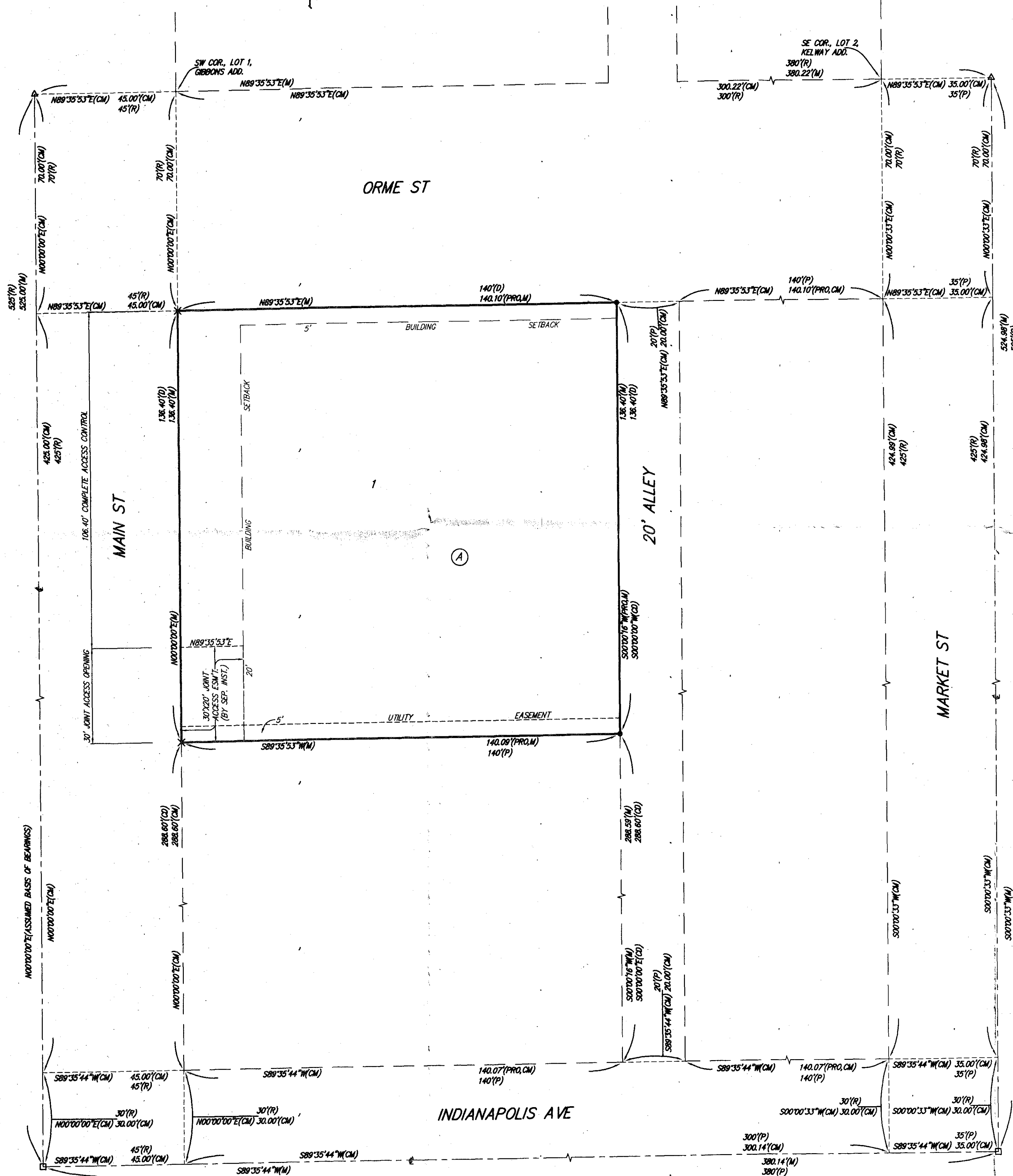
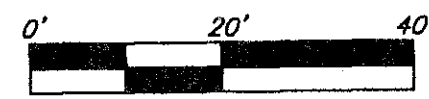


PASSIVHAUS ADDITION WICHITA, SEDGWICK COUNTY, KANSAS

FINAL TRACING REC'D 2-12-14

- = #4 BAUGHMAN REBAR (SET)
- × = CHISELED "X" (SET)
- ▲ = 1-1/4" IRON PIPE IN THIMBLE (FOUND)
- = MAG NAIL IN 1-1/4" IRON PIPE IN THIMBLE (FOUND)
- (M) = MEASURED
- (P) = PLATTED
- (D) = DESCRIBED
- (PRO) = PROPORTIONED
- (R) = RECORD MEASUREMENT
- (CM) = CALCULATED PER MEASURED INFO.



State of Kansas) SS We, Baughman Company, P.A., Surveyors in Sedgwick County and state do hereby certify that we have surveyed and platted "PASSIVHAUS ADDITION", Wichita, Sedgwick County, Kansas and that the accompanying plat is a true and correct exhibit of the property surveyed, described as beginning 580 feet south and 700 feet west of the northeast corner of the Northeast Quarter of Section 29, Township 27 South, Range 1 East of the 6th P.M., Sedgwick County, Kansas; thence east 140 feet; thence south 136.4 feet; thence west 140 feet; thence north 136.4 feet to the point of beginning.

Existing public easements and dedications being vacated by virtue of K.S.A. 12-512b, as amended.

Baughman Company, P.A.

Michael G. Conroy, Surveyor
 (Professional Seal: Michael G. Conroy, Registered Professional Surveyor, License No. 18-071, State of Kansas)

This plat of "PASSIVHAUS ADDITION", Wichita, Sedgwick County, Kansas has been submitted to and approved by the Wichita-Sedgwick County Metropolitan Area Planning Commission, Wichita, Kansas.

Dated this _____ day of _____, 2014.

Wichita-Sedgwick County Metropolitan Area Planning Commission

_____, Chair
 Don Klausmeyer

_____, Secretary
 John L. Schlegel

This plat approved and all dedications shown hereon accepted by the City Council of the City of Wichita, Kansas, this _____ day of _____, 2014.

_____, Mayor
 Carl Brewer

_____, City Clerk
 Karen Sublett

Know all men by these presents that we, the undersigned, have caused the land in the surveyors certificate to be platted into a Lot and a Block, to be known as "PASSIVHAUS ADDITION", Wichita, Sedgwick County, Kansas. The utility easement is hereby granted as indicated for the construction and maintenance of all public utilities. Access controls shall be as depicted on the face of the plat and are hereby granted to the City of Wichita, Kansas. The permitted opening locations shall be as determined by the City Engineer of the City of Wichita, Kansas.

W. W. Garvey Trust Number Two,
 dated December 28, 1976

Reviewed in accordance with K.S.A. 58-2005 on this _____ day of _____, 2014.

Michael H. Garvey, Trustee
 Michael H. Garvey

Tricia L. Robello, L.S. #1246
 Deputy County Surveyor
 Sedgwick County, Kansas

State of Kansas) SS The foregoing instrument acknowledged before me, this 14th day of February, 2014, by Michael H. Garvey, Trustee of the W. W. Garvey Trust Number Two, dated December 28, 1976, on behalf of the trust.

Entered on transfer record this _____ day of _____, 2014.

JUDITH M. TERHUNE
 Notary Public - State of Kansas
 My Appl. Expires 11-7-17

Judith M. Terhune, Notary Public
 JUDITH M. TERHUNE

My App't. Exp. 11-7-17

_____, County Clerk
 Kelly B. Arnold

State of Kansas) SS This is to certify that this plat has been filed for record in the office of the Register of Deeds, this _____ day of _____, 2014 at _____ o'clock _____ M.; and is duly recorded.

_____, Register of Deeds
 Bill Meek

_____, Deputy
 Tonya Buckingham

NOTE: A DRAINAGE PLAN HAS BEEN DEVELOPED FOR THIS SUBDIVISION AND IS ON FILE WITH THE CITY OF WICHITA, KANSAS. DRAINAGE INTENT SHALL REMAIN AS DEPICTED OR AS MODIFIED WITH THE APPROVAL OF THE CITY ENGINEER OF THE CITY OF WICHITA, KANSAS. NO OBSTRUCTIONS WHICH IMPED THE FLOW OF THIS DRAINAGE PLAN SHALL BE ALLOWED.