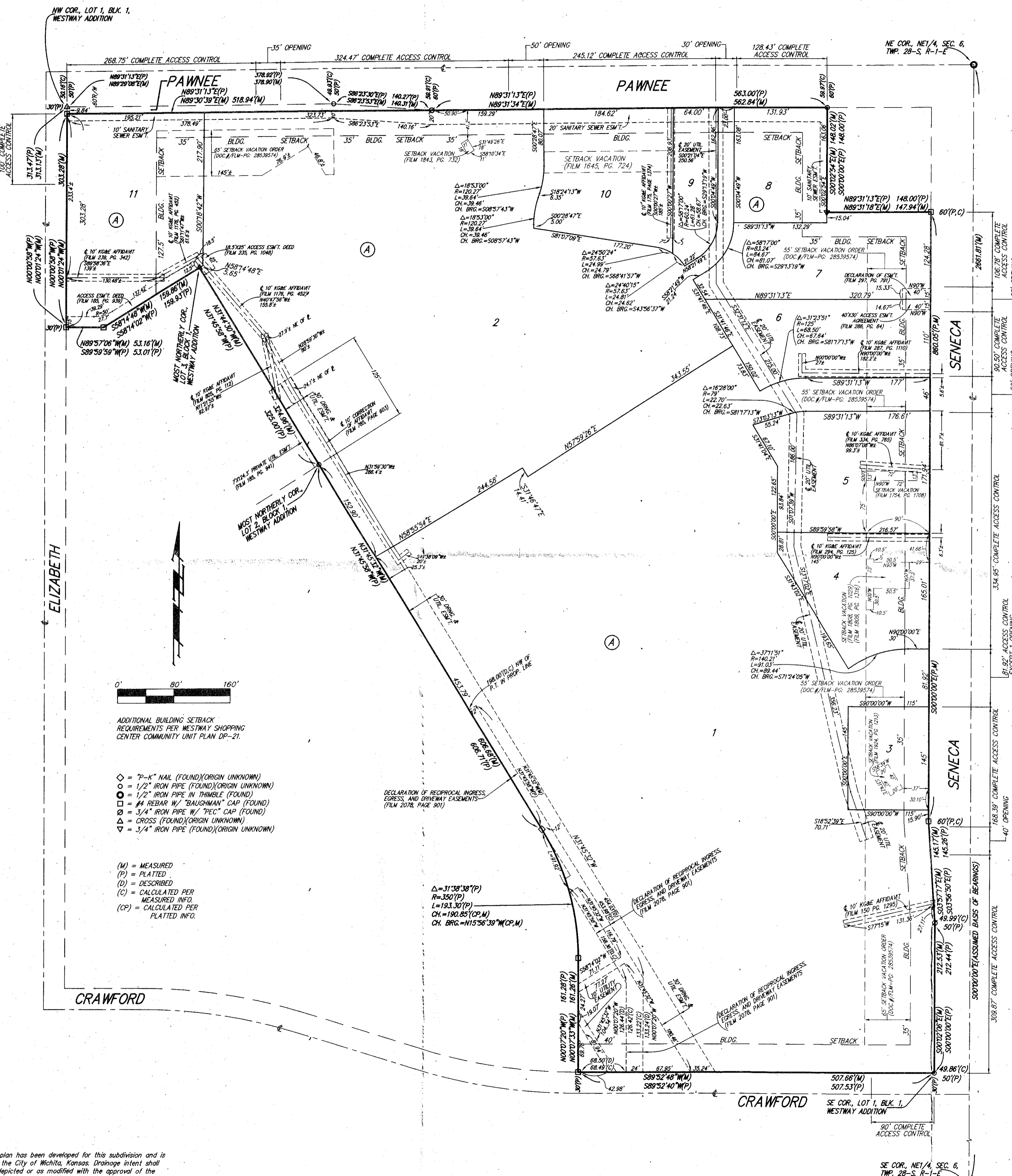


# WESTWAY 2ND ADDITION

## WICHITA, SEDGWICK COUNTY, KANSAS

FINAL TRACING REC'D 2-18-14

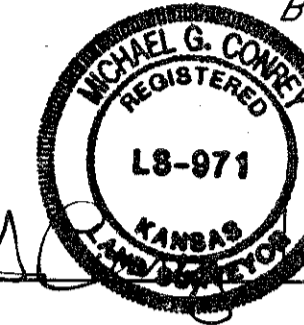


State of Kansas) SS We, Baughman Company, P.A., Surveyors in  
Sedgwick County) aforesaid county and state do hereby certify that we have surveyed and  
platted "WESTWAY 2ND ADDITION", Wichita, Sedgwick County, Kansas and  
that the accompanying plat is a true and correct exhibit of the property  
surveyed, described as and being a replat of Lot 1, Block 1, Westway  
Addition, Wichita, Sedgwick County, Kansas.

All being situated in the Northeast Quarter of  
Section 6, Township 28 South, Range 1 East of the  
Sixth Principal Meridian, Sedgwick County, Kansas.

Existing public easements and dedications being  
vacated by virtue of K.S.A. 12-512b, as amended.

Baughman Company, P.A.



*Michael G. Conrey*  
Michael G. Conrey, Surveyor

This plat of "WESTWAY 2ND ADDITION",  
Wichita, Sedgwick County, Kansas has been submitted to and approved by  
the Wichita-Sedgwick County Metropolitan Area Planning Commission,  
Wichita, Kansas.

Dated this \_\_\_\_\_ day of \_\_\_\_\_, 2013.  
Wichita-Sedgwick County Metropolitan Area Planning Commission

\_\_\_\_\_, Chair

\_\_\_\_\_, Secretary

Know all men by these presents that we, the  
undersigned, have caused the land in the surveyors certificate to be platted  
into Lots, a Block, and a Street, to be known as "WESTWAY 2ND ADDITION",  
Wichita, Sedgwick County, Kansas. The utility easements are hereby granted  
as indicated for the construction and maintenance of all public utilities.  
The drainage and utility easement is hereby granted as indicated for  
drainage purposes and for the construction and maintenance of all public  
utilities. The sanitary sewer easements are hereby granted as indicated for  
the construction and maintenance of sanitary sewer systems. Access  
controls shall be as depicted on the face of the plat and are hereby  
granted to the City of Wichita, Kansas. The permitted opening locations  
shall be as determined by the City Engineer of the City of Wichita, Kansas.

Westway Plaza, LLC,  
a Delaware limited liability company

*Raymond Arjmand*  
Raymond Arjmand, Managing Member

This plat approved and all dedications  
shown hereon accepted by the City Council of the City of Wichita,  
Kansas, this \_\_\_\_\_ day of \_\_\_\_\_, 2014.

\_\_\_\_\_, Mayor

\_\_\_\_\_, City Clerk

Reviewed in accordance with K.S.A. 58-2005  
on this \_\_\_\_\_ day of \_\_\_\_\_, 2014.

State of California) SS On 2-11-2014 before me,  
Karina Alonso, a Notary Public, personally appeared Raymond  
Arjmand, Managing Member, Westway Plaza, LLC, a Delaware limited liability  
company, who proved to me on the basis of satisfactory evidence to be  
the person(s) whose name(s) is/are subscribed to the within instrument  
and acknowledged to me that he/she/they executed the same in  
his/her/their authorized capacity(ies), and that by his/her/their  
signature(s) on the instrument the person(s), or the entity upon behalf of  
which the person(s) acted, executed the instrument.

I certify under PENALTY OF PERJURY under the laws of the State of  
California that the foregoing paragraph is true and correct.

WITNESS my hand and official seal.

Signature *Karina Alonso*  
KARINA ALONSO (Seal)



Entered on transfer record this \_\_\_\_\_ day  
of \_\_\_\_\_, 2014.

\_\_\_\_\_, County Clerk

We, the undersigned holders of a mortgage on the  
above described property, do hereby consent to this plat of "WESTWAY  
2ND ADDITION", Wichita, Sedgwick County, Kansas.

Fidelity Bank

State of Kansas) SS The foregoing instrument acknowledged be-  
fore me, this \_\_\_\_\_ day of \_\_\_\_\_, 2014, by \_\_\_\_\_  
of Fidelity Bank, on behalf of the bank.

State of Kansas) SS This is to certify that this plat has been  
filed for record in the office of the Register of Deeds, this \_\_\_\_\_ day  
of \_\_\_\_\_, 2014 at \_\_\_\_\_ o'clock \_\_\_\_\_ M; and is duly recorded.

\_\_\_\_\_, Register of Deeds

\_\_\_\_\_, Deputy

\_\_\_\_\_, Notary Public

My App't. Exp. \_\_\_\_\_

