

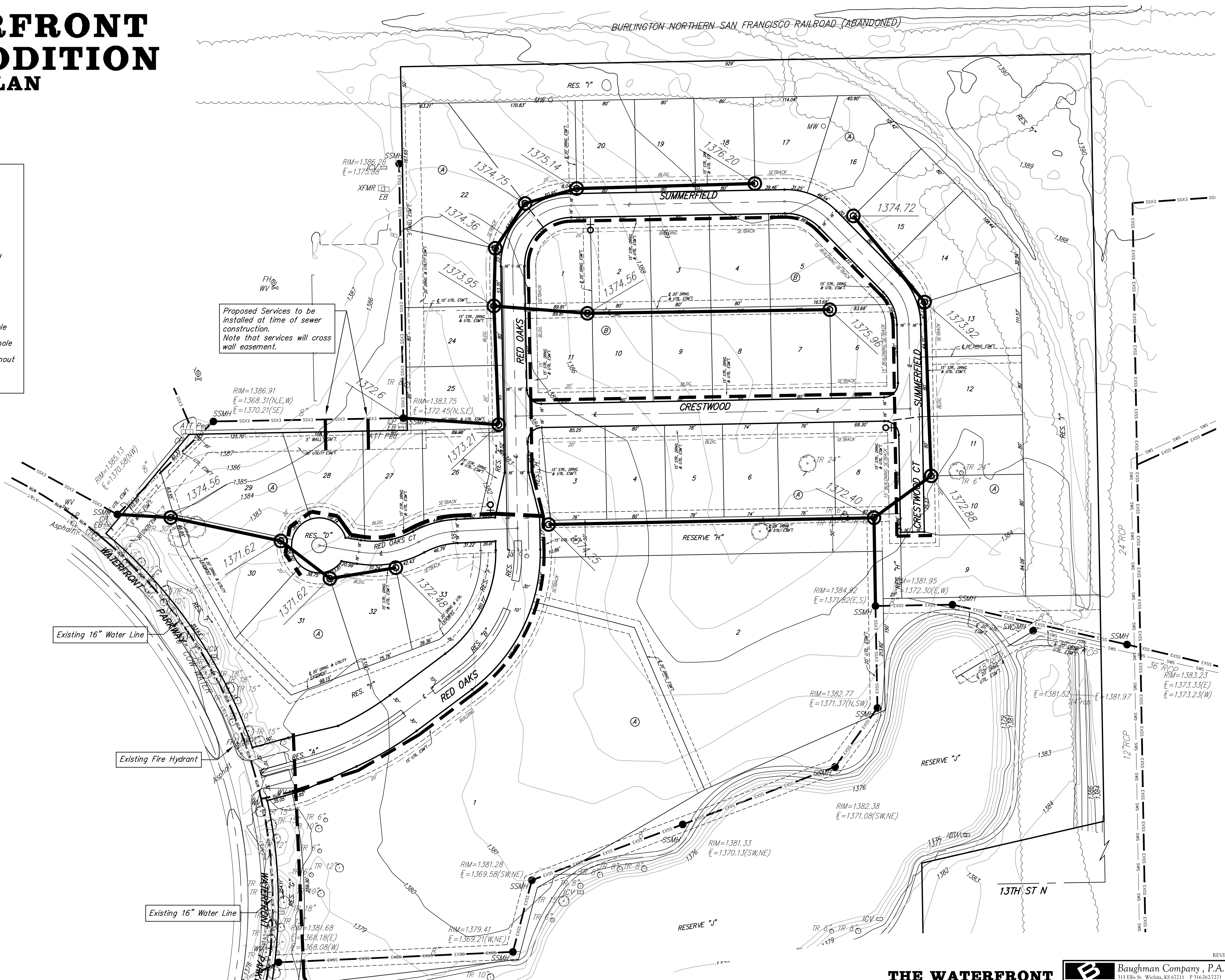
# THE WATERFRONT SEVENTH ADDITION UTILITY PLAN

BURLINGTON-NORTHERN-SAN FRANCISCO RAILROAD (ABANDONED)

### LEGEND

- Proposed Water Line (8" Unless Noted Otherwise)
- Existing Water Line (8" Unless Noted Otherwise)
- Proposed Fire Hydrant
- Existing Fire Hydrant
- Existing Fire Hydrant Removed
- Proposed Sanitary Sewer Line (8" Unless Noted Otherwise)
- Existing Sanitary Sewer Line (8" Unless Noted Otherwise)
- Existing Sanitary Sewer Manhole
- Proposed Sanitary Sewer Manhole
- Proposed Sanitary Sewer Cleanout
- Proposed Sanitary Sewer Flow

Proposed Services to be installed at time of sewer construction. Note that services will cross wall easement.



- = #4 REBAR W/ "BAUGHMAN" CAP (SET)
- = #5 REBAR W/ "MICO" CAP (FOUND)
- = 3/4" IRON IN THIMBLE (FOUND)
- = 5/8" REBAR W/ "GERBER" CAP (FOUND)
- = 1/2" IRON (FOUND)

MINIMUM BUILDING PAD ELEVATIONS FOR LOWEST OPENING TO THE STRUCTURES

LOT	BLOCK	ELEVATION NAVD88
1,2	A	1381.0