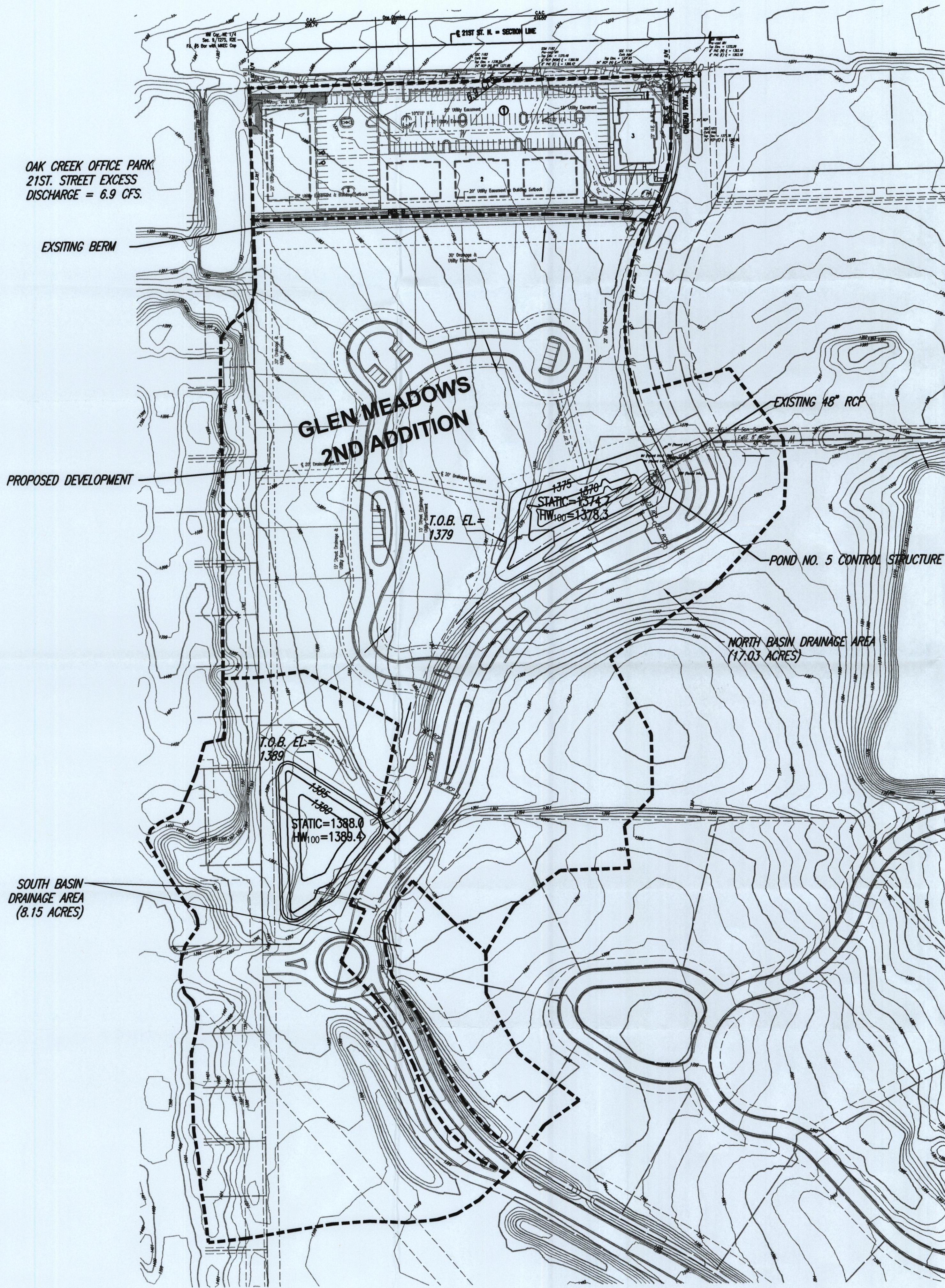


FUTURE OAK CREEK DEVELOPMENT

AN ADDITION TO WICHITA, SEDGWICK COUNTY, KANSAS



DRAINAGE CALCULATIONS

DRAINAGE BASIN = 17.03 AC.

NWL (1374.7) = 0.404 AC.

T.O.B. (1379) = 0.665 AC.

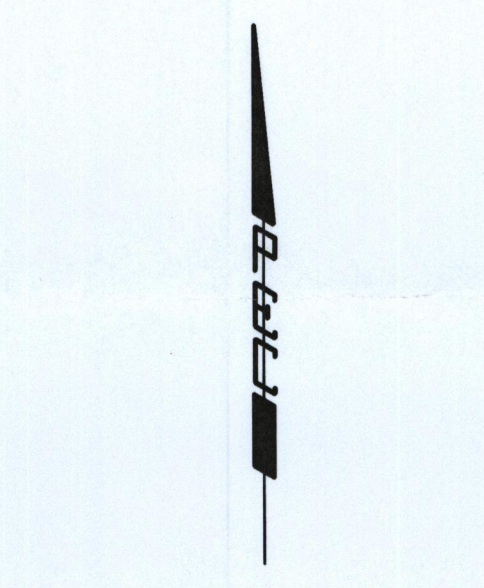
Pre T_c = 20.2 Minutes
 Post T_c = 15 Minutes
 H.S.G. = D
 Pre CN = 84
 Post CN = 88
 100 Yr. - 24 Hr. Rainfall = 7.80 Inches
 Pre Q_{100} Peak = 158.80 CFS
 Post Q_{100} Peak = 164.3 CFS
 Allowable Discharge = 158.8 - 6.9 = 151.9 CFS

Pond Peak Discharge Q_{100} = 112.4 CFS

48" Concrete Headwall Control Structure

POND 5 DHW_{100} = 1378.3

DISCHARGE RATES					
YEAR	2	5	10	25	100
PRE CFS (ALLOWABLE)	49.2	72.1	83.6	110.2	151.9
POST CFS	61.2	86.8	99.7	127.9	164.3
WEIR DISCHARGE CFS	49.0	72.0	83.3	95.9	112.4



SCALE: 1" = 100'

DATE: NOVEMBER 25, 2013

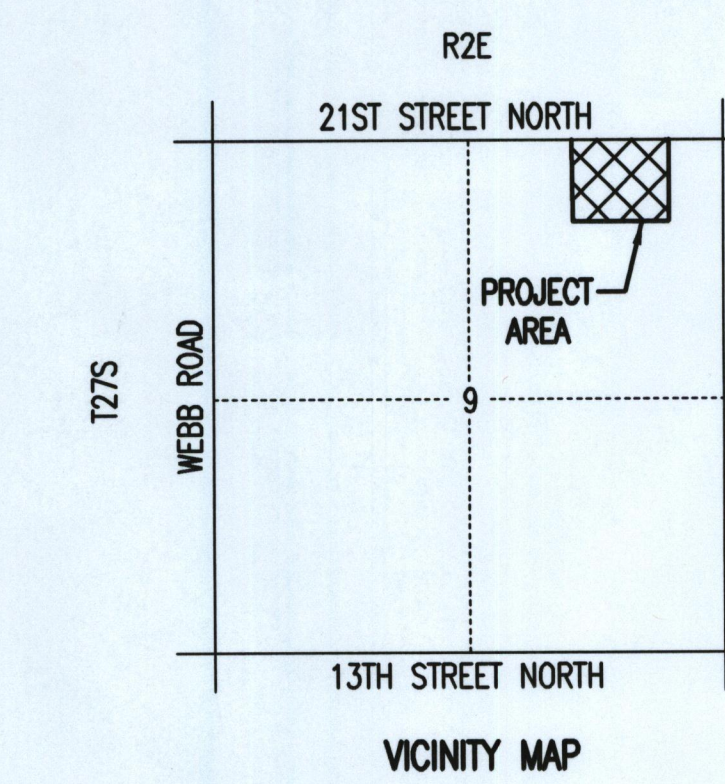
VERTICAL DATUM: NAVD83

LEGEND

----- BASIN BOUNDARY
 - - - - - STORM WATER FLOW DIRECTION

BENCHMARK LIST

BM #18 - CHISELED SQUARE ON CENTER FACE OF CURB INLET ON WEST SIDE OF CHATEAU PARKWAY, 600' SOUTH OF 21ST STREET NORTH NEAR NORTHWEST CORNER GLENMEAD ADDITION. ELEV. = 1379.13 NNVD83
 BM #3038 - BRASS DISC ON TOP OF WEST CURB OF CHATEAU PARKWAY, 165 FEET NORTH OF GLENMEAD CIRCLE. ELEV. = 1384.60 NNVD83
 BM #21 - CHISELED SQUARE ON WEST SIDE OF CONCRETE BASE FOR LIGHT POLE ON EAST SIDE OF CHATEAU PARKWAY NEAR SOUTHWEST CORNER OF GLENMEAD ADDITION, 1200' SOUTH OF 21ST STREET NORTH. ELEV. = 1390.30 NNVD83



No.		Revised		By	Date
CITY OF WICHITA SEDGWICK COUNTY, KANSAS GLEN MEADOWS 2ND ADDITION AT OAK CREEK REVISED DRAINAGE PLAN					
Professional Engineering Consultants, P.A. 303 S. TOPKA - WICHITA, KANSAS 67202 316-262-2601 • FAX 316-262-3003					
Designed by	BMM	Job No.	35-13438-1002	Sht. 1 of 1	
Drawn by	BJS	Date	NOVEMBER, 2013		

Sheet 11 of 20, 11/25/2013 4:00:17 PM by: BERTHIAUME/AMM
 C:\WORK\13438\13438-1002\13438-1002.dwg, Drawn: BJS, 11/25/2013