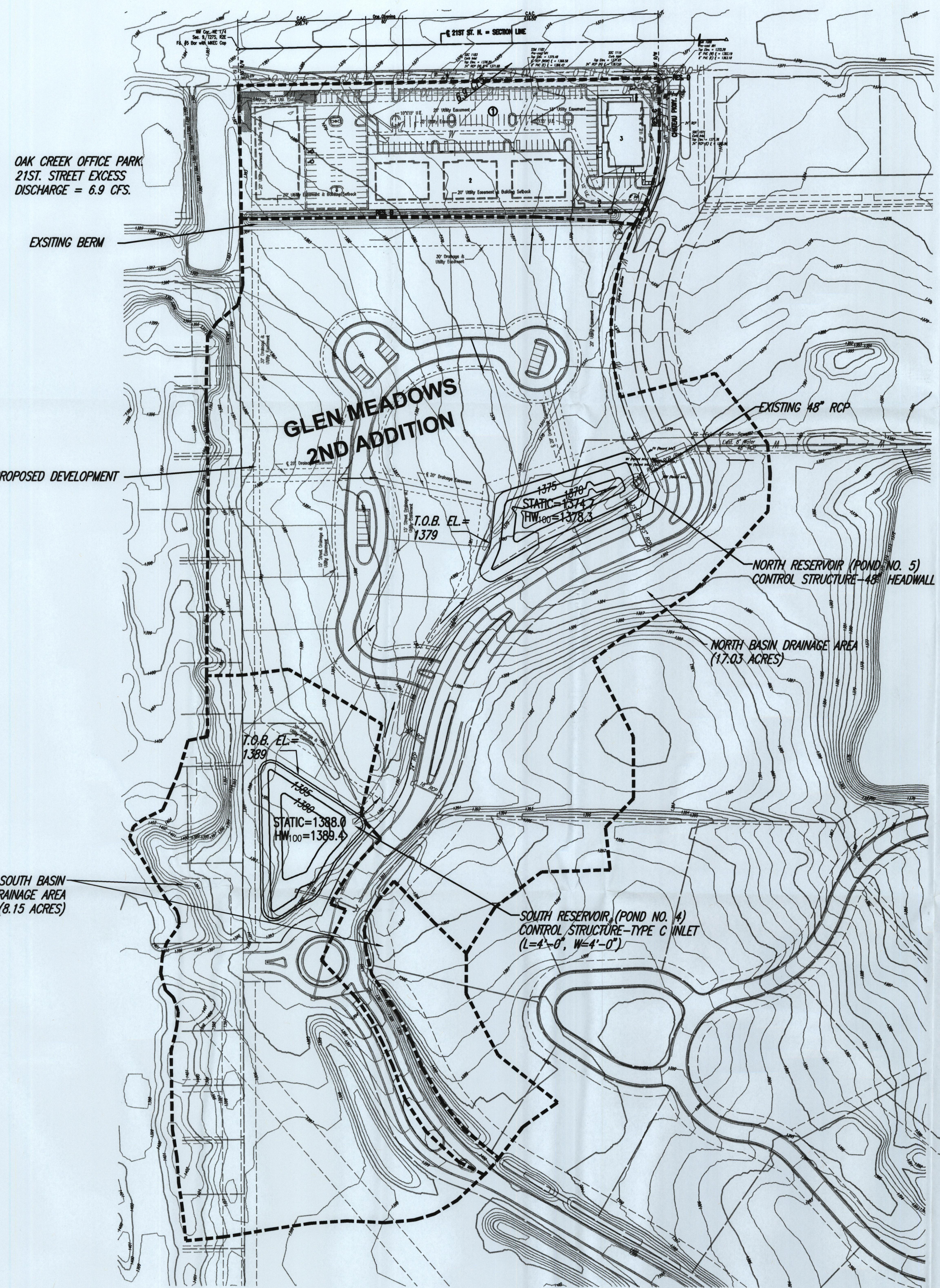
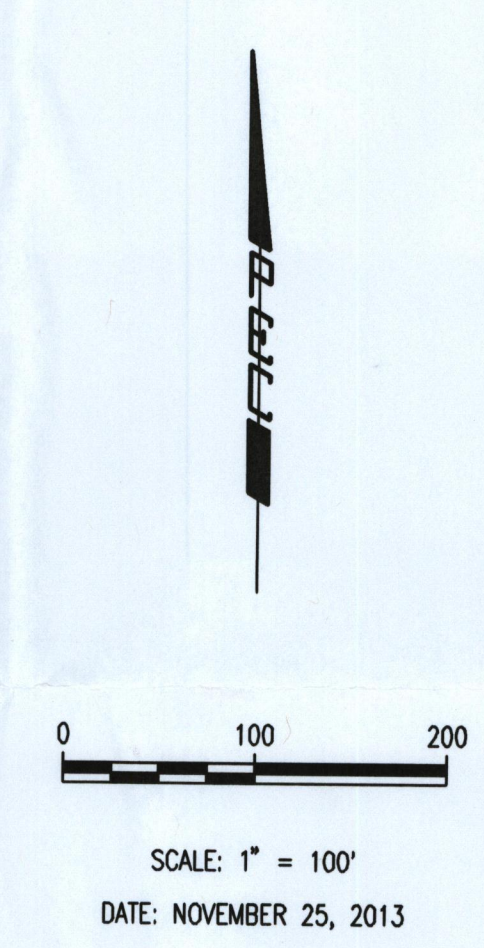


FUTURE OAK CREEK DEVELOPMENT

AN ADDITION TO WICHITA, SEDGWICK COUNTY, KANSAS



Survey 12-17-2013 11:20:45 AM by MICHAEL P. HANNA
 303 S. TOPPEKA - WICHITA, KANSAS 67202
 316-262-2691 • FAX 316-262-3023



DRAINAGE CALCULATIONS

DRAINAGE BASIN = 17.03 AC.
 NWL (1374.7) = 0.404 AC.
 T.O.B. (1379) = 0.665 AC.
 Pre Tc = 20.2 Minutes
 Post Tc = 15 Minutes
 H.S.G. = D
 Pre CN = 64
 Post CN = 88
 100 Yr. - 24 Hr. Rainfall = 7.80 Inches
 Pre Q_{100} Peak = 158.80 CFS
 Post Q_{100} Peak = 164.3 CFS
 Allowable Discharge = 158.8 - 6.9 = 151.9 CFS
 Pond Peak Discharge Q_{100} = 112.4 CFS
 48" Concrete Headwall Control Structure
 POND 5 DHW $_{100}$ = 1378.3

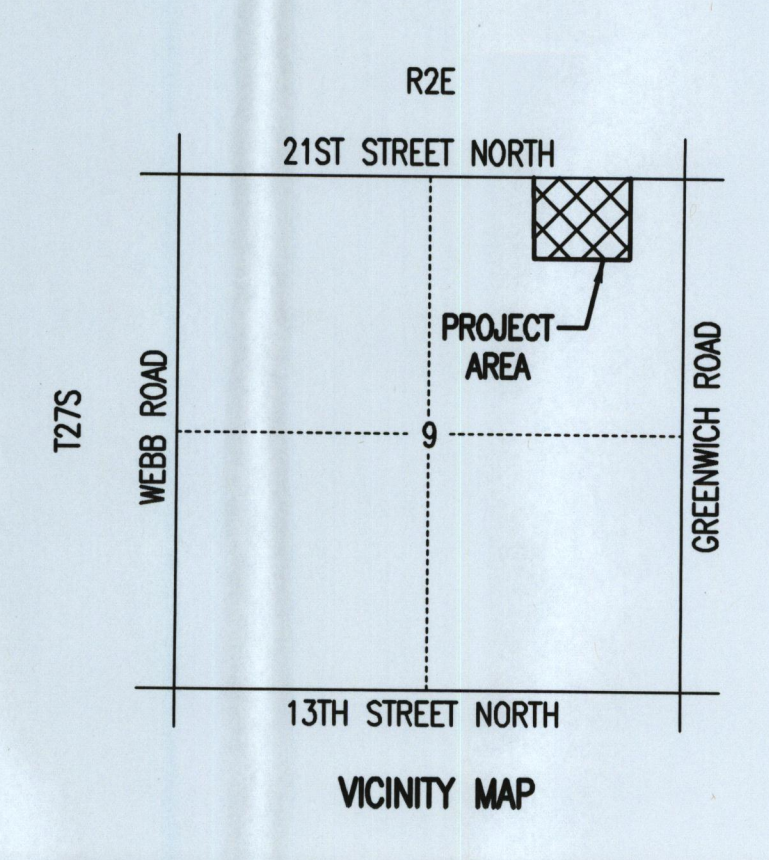
LEGEND

- BASIN BOUNDARY
- STORM WATER FLOW DIRECTION

BENCHMARK LIST

- BM #18 - CHEELED SQUARE ON CENTER FACE OF CURB INLET ON WEST SIDE OF CHATEAU PARKWAY, 800' SOUTH OF 21ST STREET NORTH NEAR NORTHWEST CORNER GLENMEAD ADDITION. ELEV. = 1378.13 NAVD88
- BM #303A - BRASS DISC ON TOP OF WEST CURB OF CHATEAU PARKWAY, 165 FEET NORTH OF GLENMEAD CIRCLE. ELEV. = 1384.60 NAVD88
- BM #21 - CHEELED SQUARE ON WEST SIDE OF CONCRETE BASE FOR LIGHT POLE ON EAST SIDE OF CHATEAU PARKWAY NEAR SOUTHWEST CORNER OF GLENMEAD ADDITION, 1200' SOUTH OF 21ST STREET NORTH. ELEV. = 1390.30 NAVD88

DISCHARGE RATES					
YEAR	2	5	10	25	100
PRE CFS (ALLOWABLE)	49.2	72.1	83.6	110.2	151.9
POST CFS	61.2	86.8	99.7	127.9	164.3
POND 5 DISCHARGE CFS	49.0	72.0	83.3	95.9	112.4



No.	Revision	By	Date
CITY OF WICHITA SEDGWICK COUNTY, KANSAS GLEN MEADOWS 2ND ADDITION AT OAK CREEK REVISED DRAINAGE PLAN			
Professional Engineering Consultants, P.A. 303 S. TOPPEKA - WICHITA, KANSAS 67202 316-262-2691 • FAX 316-262-3023			
Designed by	BMM	Job No.	35-13438-002
Drawn by	BJS	Date	DECEMBER 2013
			Sht. 1 of 1