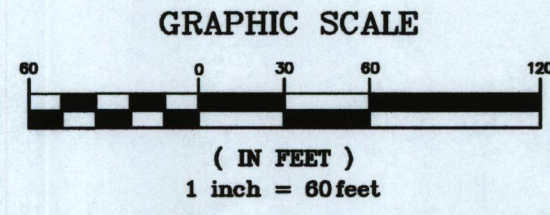
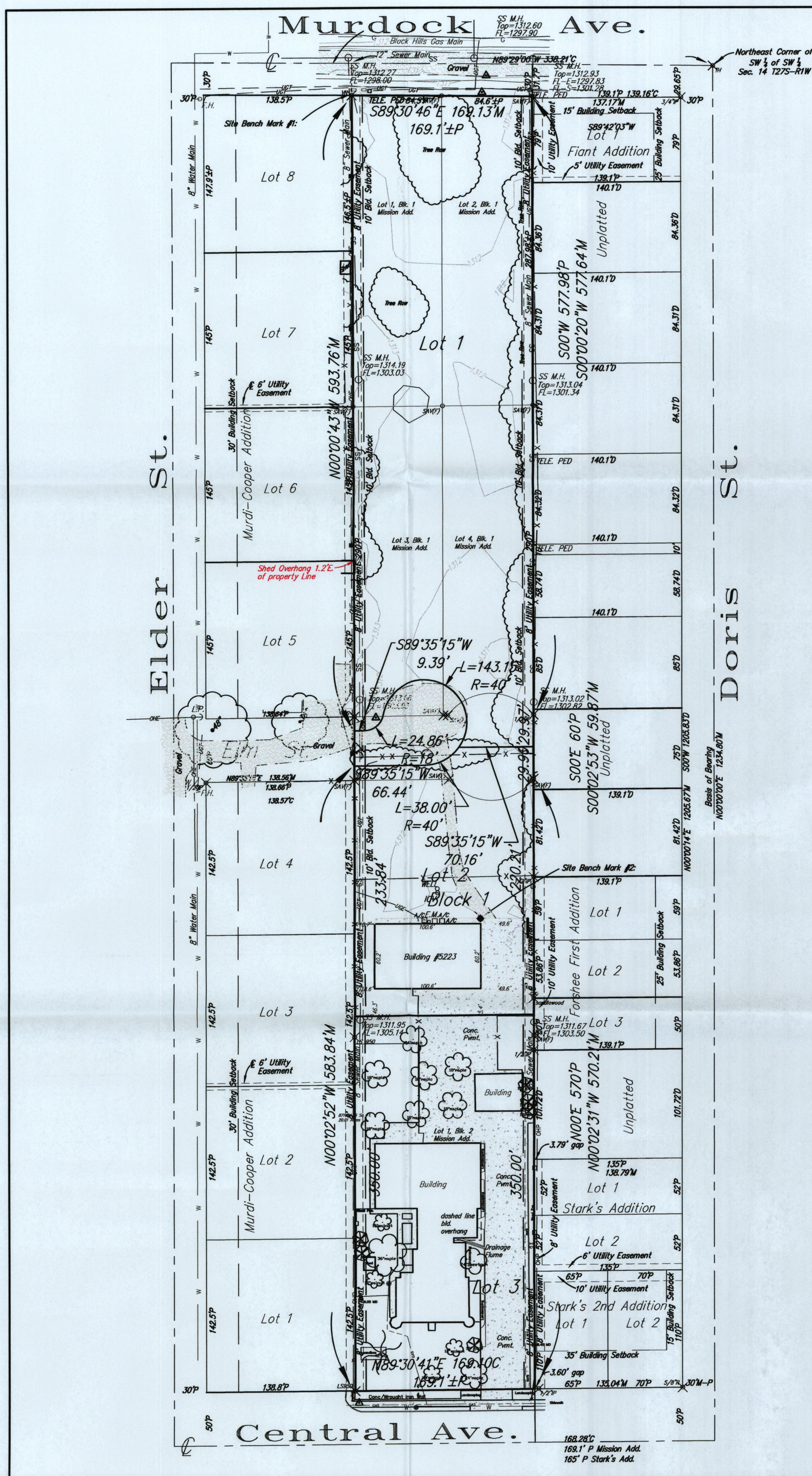


# ONE STEP FINAL PLAT OF NAHOLA ADDITION WICHITA, SEDGWICK COUNTY, KANSAS



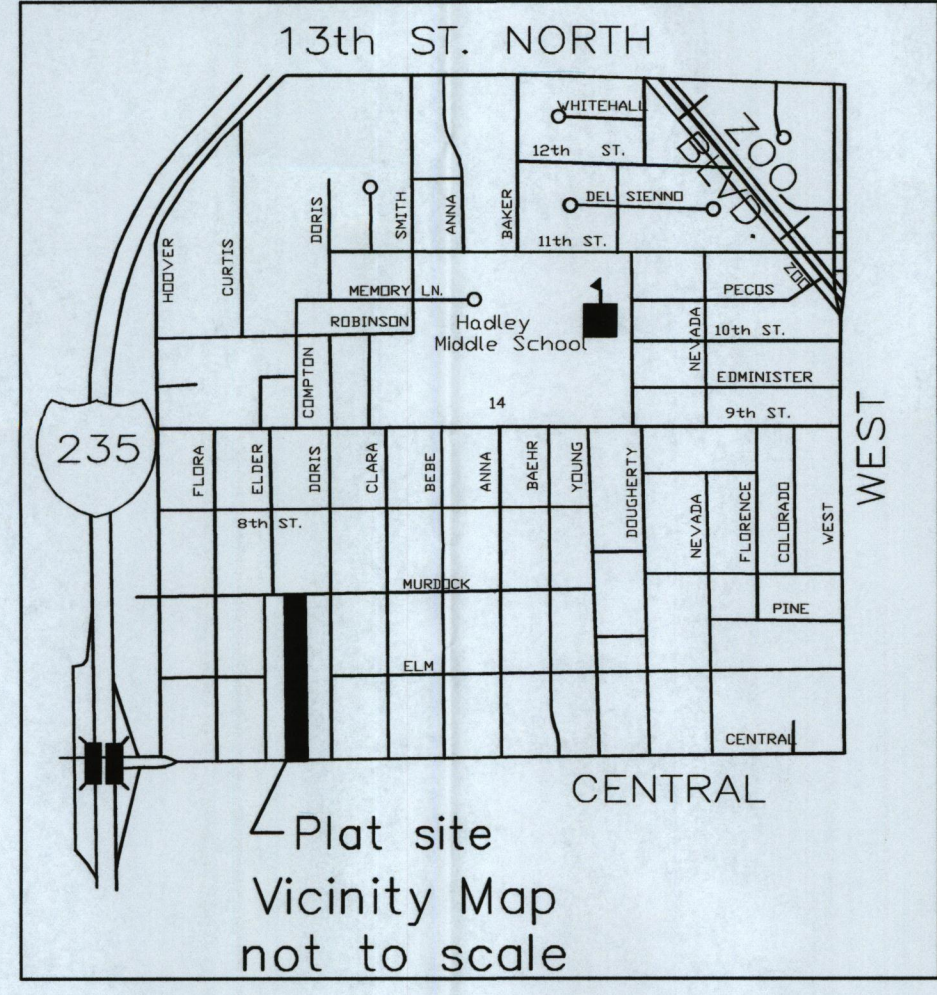
LEGEND  
 B = Bench Mark  
 P = Plat  
 U = Utility  
 O = Other

1/2" = 1/2" MIN PPE (FRONT ORDN UNDRNG)  
 1/4" = 1/4" MIN PPE (FRONT ORDN UNDRNG)  
 3/8" = 3/8" MIN PPE (FRONT ORDN UNDRNG)  
 1/2" = 1/2" MIN PPE (FRONT ORDN UNDRNG)  
 3/4" = 3/4" MIN PPE (FRONT ORDN UNDRNG)  
 1" = 1" MIN PPE (FRONT ORDN UNDRNG)  
 1 1/2" = 1 1/2" MIN PPE (FRONT ORDN UNDRNG)  
 2" = 2" MIN PPE (FRONT ORDN UNDRNG)  
 3" = 3" MIN PPE (FRONT ORDN UNDRNG)  
 4" = 4" MIN PPE (FRONT ORDN UNDRNG)  
 6" = 6" MIN PPE (FRONT ORDN UNDRNG)  
 8" = 8" MIN PPE (FRONT ORDN UNDRNG)  
 10" = 10" MIN PPE (FRONT ORDN UNDRNG)  
 12" = 12" MIN PPE (FRONT ORDN UNDRNG)  
 14" = 14" MIN PPE (FRONT ORDN UNDRNG)  
 16" = 16" MIN PPE (FRONT ORDN UNDRNG)  
 18" = 18" MIN PPE (FRONT ORDN UNDRNG)  
 20" = 20" MIN PPE (FRONT ORDN UNDRNG)  
 24" = 24" MIN PPE (FRONT ORDN UNDRNG)  
 30" = 30" MIN PPE (FRONT ORDN UNDRNG)  
 36" = 36" MIN PPE (FRONT ORDN UNDRNG)  
 42" = 42" MIN PPE (FRONT ORDN UNDRNG)  
 48" = 48" MIN PPE (FRONT ORDN UNDRNG)  
 54" = 54" MIN PPE (FRONT ORDN UNDRNG)  
 60" = 60" MIN PPE (FRONT ORDN UNDRNG)

LEGEND  
 B.M. = BENCH MARK  
 TEL. PED. = TELEPHONE PEDESTAL  
 T.M. = TELEPHONE METER  
 F.I. = FIRE HYDRANT  
 G.U.A. = GUY ANCHOR  
 I.C.V. = IRREGULAR CONTROL VALVE  
 L.P. = LIGHT POLE  
 P.P. = POWER POLE  
 W.W. = WATER WELL  
 W.W. = WATER WALKIE  
 S.S.M. = SANITARY SEWER MANHOLE

Site Bench Mark #1:  
 Stationed at the NE Corner of Lot 1, Block 1,  
 Division 1, 1315E (W44588)

Site Bench Mark #2:  
 Stationed at the NW Corner 4.7' x  
 of the NE Corner Building No. 5223  
 Division 1, 1315E (W44588)



State of Kansas  
 Sedgewick County, SS

I, the undersigned Licensed Land Surveyor in this state and state, do hereby certify that, under the supervision of the undersigned, we, Poe & Associates, Inc., have surveyed and plotted "NAHOLA ADDITION", Wichita, Sedgewick County, Kansas and that the accompanying plat is a true and correct exhibit of the property surveyed, described as follows:

All of Lots 1, 2, 3 and 4, Block 1, and Lot 1, Block 2, all in Mission Addition to Wichita, Kansas, ALSO, the vacated Elm Street right-of-way.  
 Existing public dedications, rights-of-way, and easements being vacated by virtue of K.S.A. 12-5126, as amended.

William P. Fox #739  
 For & Associates, Inc.

Surveyor

State of Kansas  
 Sedgewick County, SS

Know all men by these presents that we, the undersigned, have caused the land described in the surveyor's certificate to be replatted into Lots and a Block to be known as "NAHOLA ADDITION", Wichita, Sedgewick County, Kansas. Rights-of-way as shown are hereby dedicated to the public for road purposes. Access openings shall be in accordance with minimum spacing requirements of the Wichita/Sedgewick County Access Management Standards unless otherwise noted. A drainage plan has been developed for the plat. All drainage easements, rights-of-way, or reserves shall remain of established grades or as modified with the approval of the City Stormwater Engineer to allow the unobstructed conveyance of stormwater. The drainage plan is on file with the City Stormwater Engineer.

Owner, Nancy J. Loeschler  
 Owner, Donaldson-Leeschler Living Trust  
 By, Nancy J. Loeschler  
 Title, Managing Member

State of Kansas  
 Sedgewick County, SS

The foregoing instrument acknowledged before me, this \_\_\_\_\_ day of \_\_\_\_\_, 2013, by Nancy J. Loeschler.

Notary Public

My App'l. Exp. \_\_\_\_\_

State of Kansas  
 Sedgewick County, SS

The foregoing instrument acknowledged before me, this \_\_\_\_\_ day of \_\_\_\_\_, 2013, by \_\_\_\_\_  
 Managing Member, Donaldson-Leeschler Living Trust.

Notary Public

My App'l. Exp. \_\_\_\_\_

State of Kansas  
 Sedgewick County, SS

We, the undersigned holders of a mortgage on the above described property, do hereby consent to the plat of "NAHOLA ADDITION", WICHITA, SEDGWICK COUNTY, KANSAS.

Bank of America, N.A.

Title

State of Kansas  
 Sedgewick County, SS

The foregoing instrument acknowledged before me, this \_\_\_\_\_ day of \_\_\_\_\_, 2013, by \_\_\_\_\_  
 of Bank of America, N.A., on behalf of the Bank.

Notary Public

My App'l. Exp. \_\_\_\_\_

This plat of "NAHOLA ADDITION", Wichita, Sedgewick County, Kansas has been submitted to and approved by the Wichita-Sedgewick County Metropolitan Area Planning Commission, Wichita, Kansas.

Dated this \_\_\_\_\_ day of \_\_\_\_\_, 2013.

Wichita-Sedgewick County Metropolitan Area Planning Commission

By, Dan Klasmeyer, Chair  
 Attest, John L. Schlegel, Secretary

This plat approved and all dedications shown hereon, accepted by the City Council of the City of Wichita, Kansas, this \_\_\_\_\_ day of \_\_\_\_\_, 2013.  
 At the Direction of the City Council

Carl Brewer, Mayor  
 Attest, Karen Sublett, City Clerk

Reviewed in accordance with K.S.A. 58-2205  
 this \_\_\_\_\_ day of \_\_\_\_\_, 2013.

Deputy County Surveyor  
 Sedgewick County Kansas  
 Tricia L. Robello, LS #1246

Entered on the transfer record  
 this \_\_\_\_\_ day of \_\_\_\_\_, 2013.

Kelly B. Arnold, County Clerk

State of Kansas  
 Sedgewick County, SS

This is to certify that this plat has been filed for record in the office of the Register of Deeds, this \_\_\_\_\_ day of \_\_\_\_\_, 2013, at \_\_\_\_\_ o'clock P.M. and is duly recorded.

Bill Meek, Register of Deeds  
 Tanya Buckingham, Deputy

ELEVATIONS - M4088

Minimum Low Opening Elevation		
Lot	Block	Elevation
1, 2 & 3	1	1313.60

POE & ASSOCIATES, INC.  
 CONSULTING ENGINEERS  
 5940 E. Central, Suite 200 • Wichita, KS 67208-4242  
 Phone 316/885-4114 • FAX 316/885-4444  
 F:\APPS\DOCA\1\019886\Plat.dwg  
 Plat Date: 10/1/2013