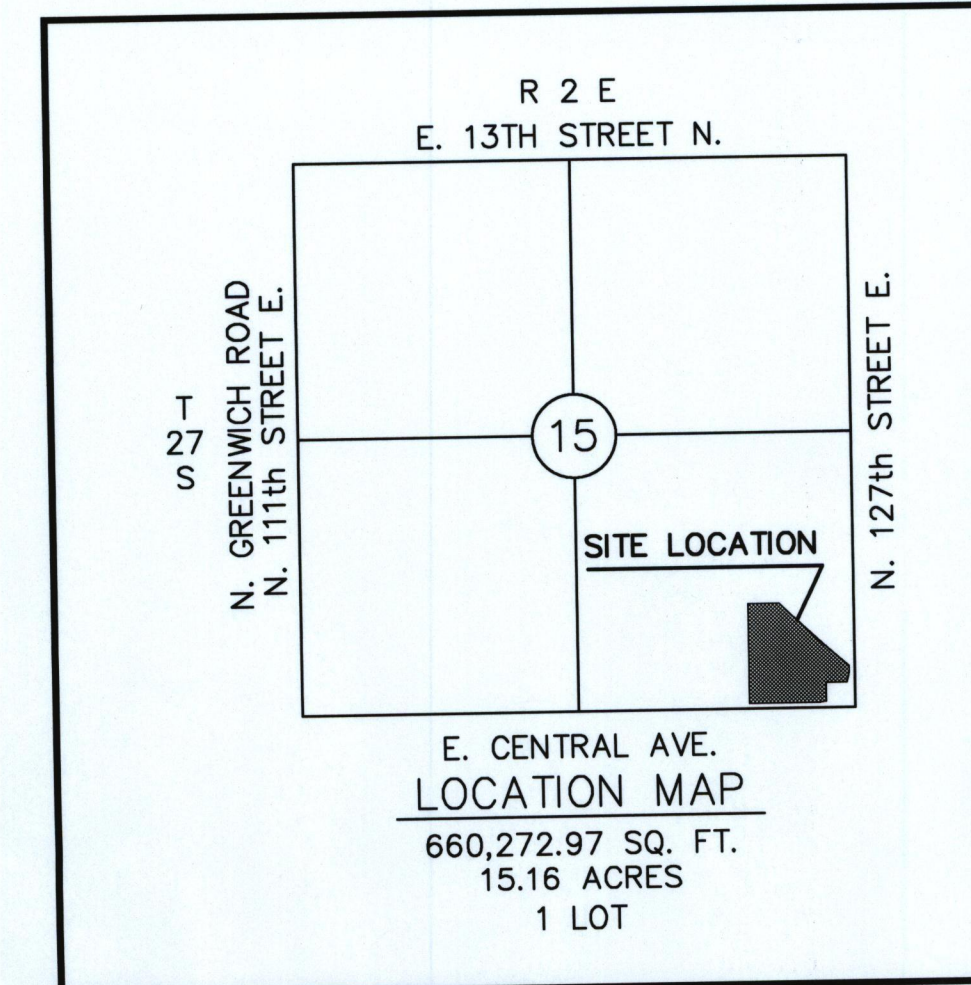


Engineer:

Tuttle & Associates, Inc.  
9714 E. 55TH Place, Tulsa, OK 74146  
Phone: (918) 663-5567

Owner:

PORTOFINO WICHITA, LLC  
4200 E. Skelly Dr., Tulsa, OK 74133  
Phone: (918) 492-1983



Sheet Index

1	COVER
2	PLAT
3	GRADING PLAN
4	DRAINAGE PLAN
5-6	STORM SEWER PLAN & PROFILE
7	EROSION CONTROL DETAIL
8	INLET DETAILS
9-11	STORM SEWER DETAILS

PROJECT NUMBER:  
**GRADING AND DRAINAGE  
PLANS**

FOR  
**PORTOFINO**

JAMES L. ARMOUR, P.E., CITY ENGINEER  
WICHITA, KANSAS

LEGAL DESCRIPTION

Lot 1, Block A, Portofino Addition, an Addition to the City of Wichita, Sedgwick County, Kansas according to the official recorded plat contained in PC 239-9, Filed 07-01-2013

APPROVED AS NOTED  
BY CITY ENGINEER OF WICHITA

Public Works \_\_\_\_\_

Sanitary Sewer Lines \_\_\_\_\_

NOTE TO CONTRACTORS

Installation, inspection and testing for this project is to be provided by a Licensed Consulting Engineering Firm under contract with the Owner/Developer. Said inspection to be in accordance with the City of Wichita standard construction engineering practices and certified by a Licensed Professional Engineer. No work shall be performed in dedicated easements or public right-of-way by the Contractor without such inspection nor shall any work be commenced without written authorization by the City Engineer. All Construction and Materials shall comply with the City of Wichita Specifications and Standards (on file and available in the City Engineer's Office).

Site Bench Mark #1  
Square Cut Top of Curb at the SE Corner  
of the Storm Water Inlet, 30'S & 2'W of  
the SE Corner Lot 36, Block 1, Crest Lake  
Addition, Elevation = 1354.88 (NAVD88)

Site Bench Mark #2  
Square Cut Top of Curb, 16.5'S & 12.5'E  
of the NE Corner of the Subject Property,  
Elevation = 1369.58 (NAVD88)

