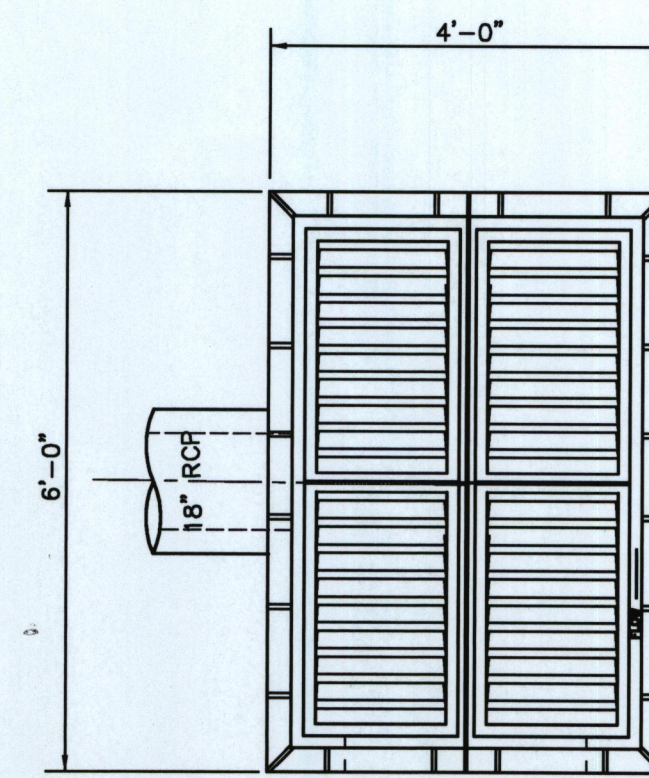
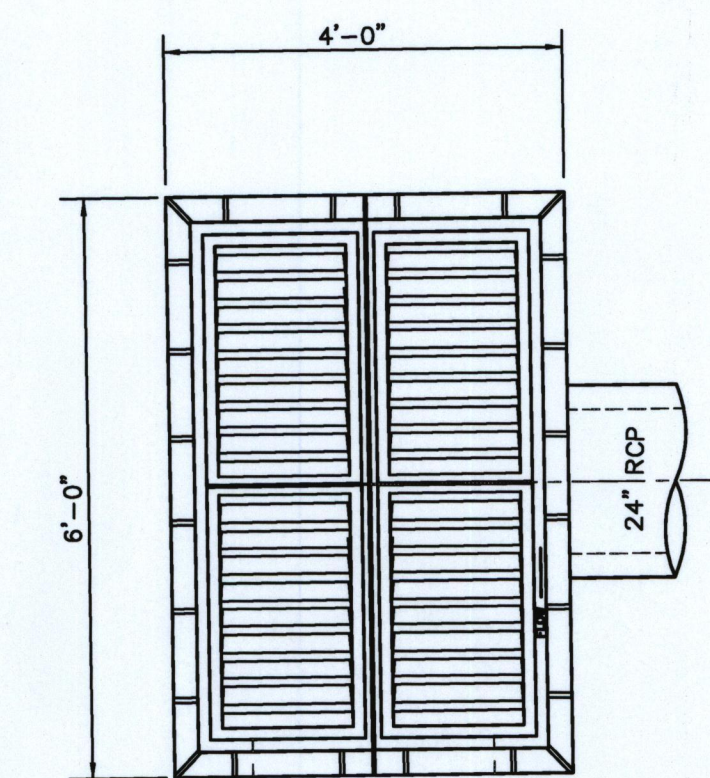


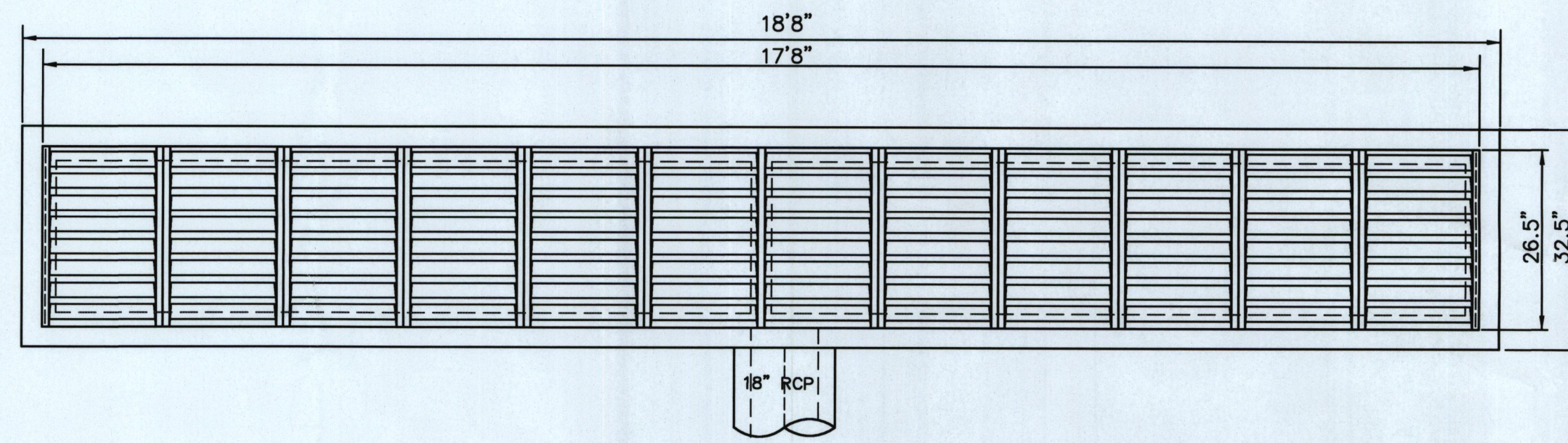
AREA INLET PLAN FOR E4 & H2
DEETER FOUNDRY #2440-LB BOLTED
CATCH BASIN INLET GRATE AND FRAME



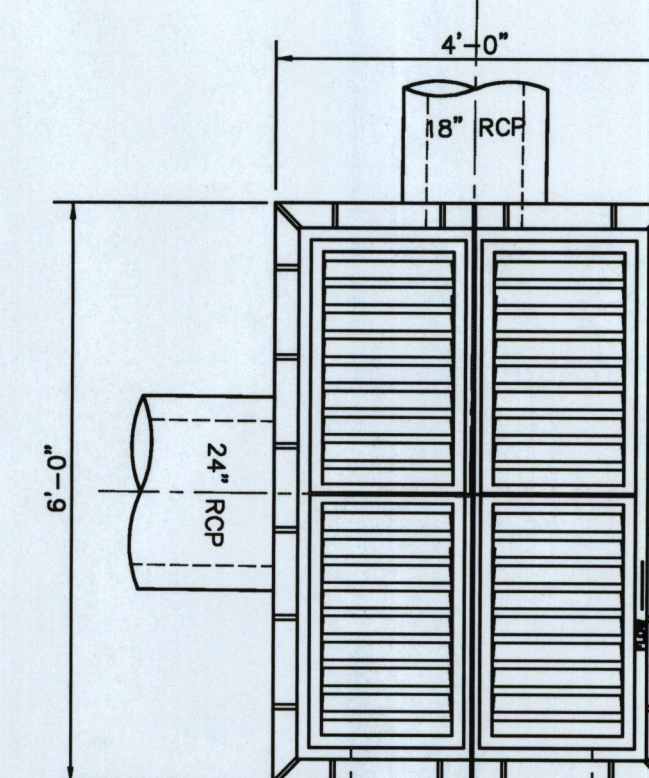
AREA INLET PLAN FOR C2
TYPE C GRATE COT. STD. 765
TYPE A FRAME COT. STD. 766



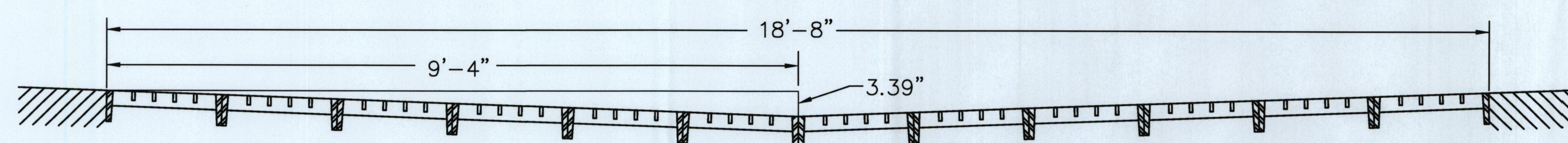
AREA INLET PLAN FOR F1
TYPE C GRATE COT. STD. 765
TYPE A FRAME COT. STD. 766



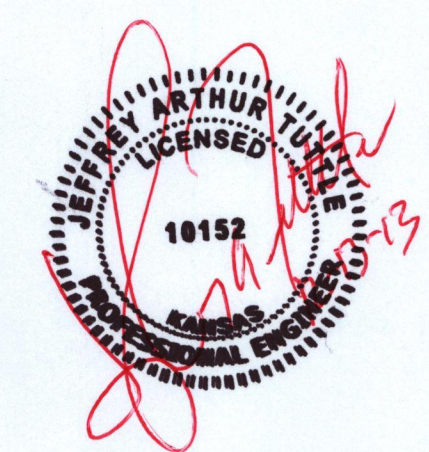
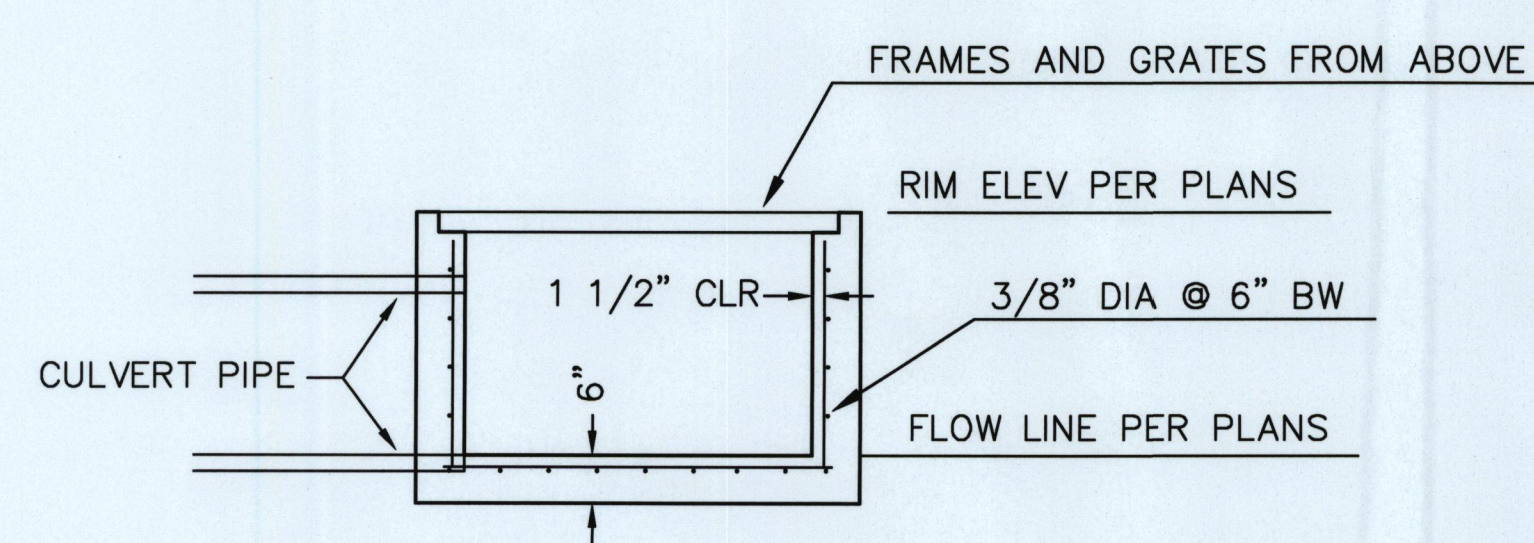
AREA INLET PLAN FOR B2 & D4
DEETER FOUNDRY #2440-LB BOLTED
CATCH BASIN INLET GRATE AND FRAME



AREA INLET PLAN FOR D2
TYPE C GRATE COT. STD. 765
TYPE A FRAME COT. STD. 766



AREA INLET DETAIL
FOR A5, A8, B3, B5, E3



PROJECT NUMBER

| REVISION | BY | DATE |
|----------|----|------|
| | | |
| | | |
| | | |
| | | |
| | | |
| | | |
| | | |
| | | |
| | | |
| | | |

| INLET DETAILS | |
|---|----------------------|
| PORTOFINO | |
| CITY OF WICHITA, KANSAS | |
| PLANS & ESTIMATES PREPARED BY: TUTTLE & ASSOCIATES, INC. | |
| DESIGNED BY: J. TUTTLE | APPROVED: |
| DFILE: 4981 Inlet Details | |
| RECOMMENDED: | |
| DEVELOPMENT SERVICES | |
| RECOMMENDED: | |
| ENGINEERING SERVICES | |
| FILE DRAWING | DATE |
| ATLAS PAGE NO | SHEET 8 OF 11 SHEETS |

5714 E. 56TH ST.
TULSA, OK 74146
918-463-5007