

Drainage Calculations

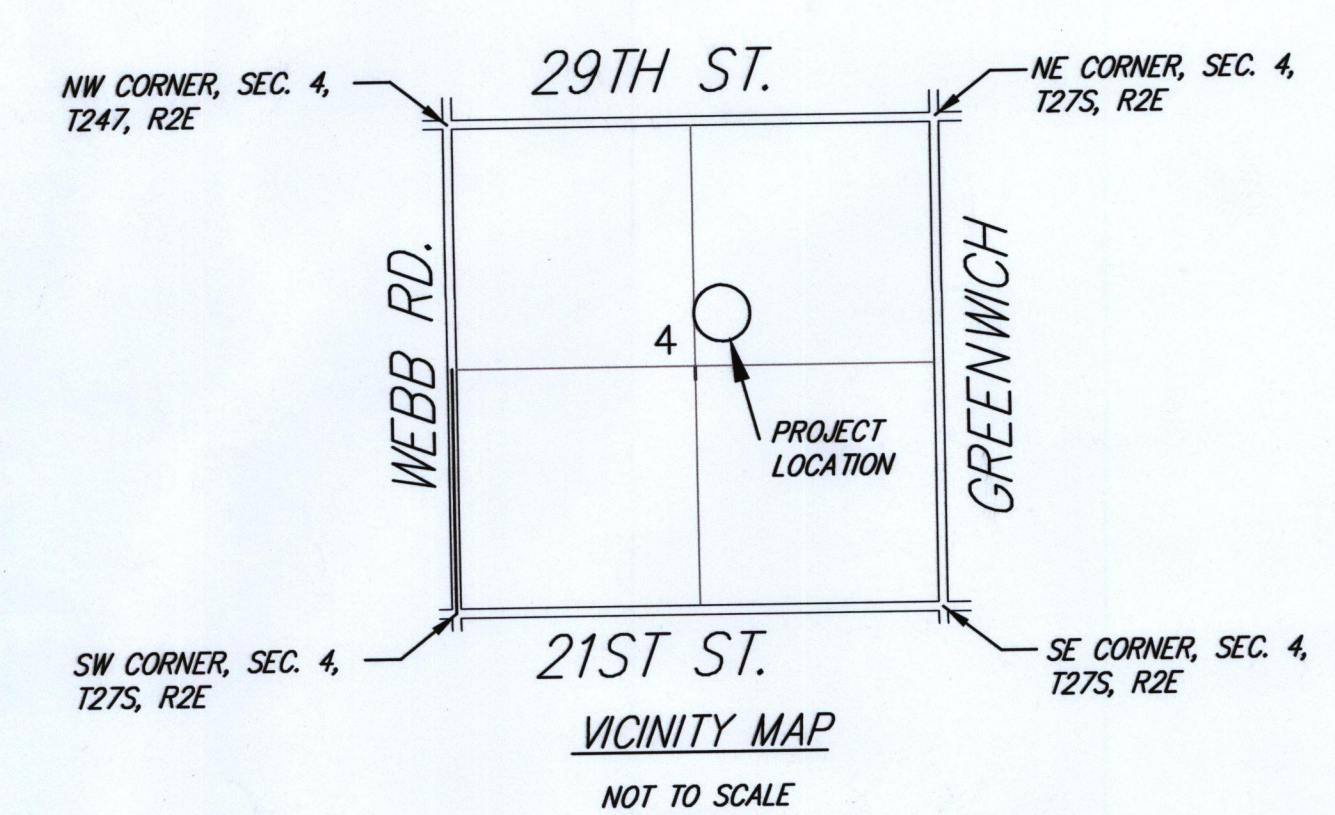
ZONING- LIMITED INDUSTRIAL
 GRESSEL SILTY CLAY, HYDROLOGIC GROUP D, 45% AREA
 ELANDCO SILT LOAM, HYDROLOGIC GROUP B, 55% AREA

HYDROLOGIC GROUP B AND D
 $T_c = 15$ MINUTES
 $I_s = 4.56$ in/hr
 $I_{100} = 7.37$ in/hr

EXISTING CONDITIONS
 $C_s = 0.45(0.35) + 0.55(0.22) = 0.28$
 $C_{100} = 0.45(0.65) + 0.55(0.41) = 0.52$
 $Q_s = 0.28(4.56)(3.2) = 4.1$ cfs
 $Q_{100} = 0.52(7.37)(3.2) = 12.3$ cfs

PROPOSED CONDITIONS
 LIGHT INDUSTRIAL
 $C_s = 0.69$
 $C_{100} = 0.80$
 $Q_s = 0.69(4.56)(3.2) = 10.1$ cfs
 $Q_{100} = 0.80(7.37)(3.2) = 18.9$ cfs

NOTE:
 PROPOSED LOT SPLIT OF LOT 4 DOES NOT CHANGE DRAINAGE PATTERNS
 OR RUNOFF AMOUNTS FROM DRAINAGE PLAN FOR REGENCY PARK 1ST, 2ND
 & 3RD ADDITIONS DATED MAY 2000.



**Lot Split, Lot 4, Block 1, Regency Park 3rd Addition
 DRAINAGE PLAN
 DERBY, KANSAS**

	Ruggles & Bohm, P.A. Engineering, Surveying, Land Planning 924 North Main Wichita, Kansas 67203 www.rkansas.com		DESIGN: AML DRAWING: AML REVIEW: AML	SHEET 1 OF 1
	DRAWING FILE: 292366 [Engineering]	PROJECT NUMBER: -	DATE: Mar. 9, 2012	