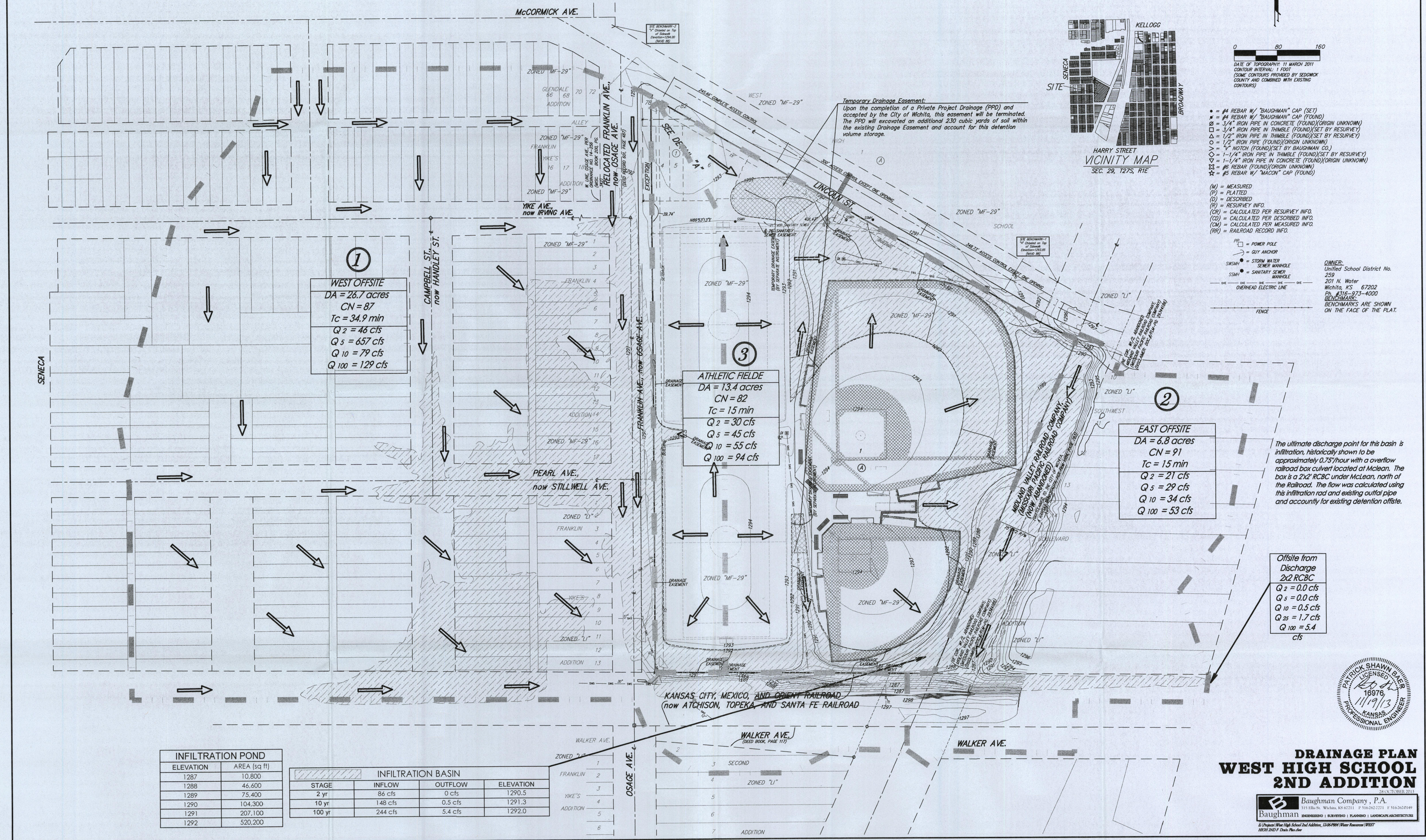


DRAINAGE CONCEPT WEST HIGH SCHOOL 2ND ADDITION WICHITA, SEDGWICK COUNTY, KANSAS



ELEVATION	AREA (sq ft)
1287	10,800
1288	46,600
1289	75,400
1290	104,300
1291	207,100
1292	520,300

STAGE	INFILTRATION BASIN		
	INFLOW	OUTFLOW	ELEVATION
2 yr	86 cfs	0 cfs	1290.5
10 yr	148 cfs	0.5 cfs	1291.3
100 yr	244 cfs	5.4 cfs	1292.0

WALKER AVE.	FRANKLIN AVE.	PEARL AVE.	IRVING AVE.	HANDELEY ST.	CAMPBELL ST.
1	2	3	4	5	6
7	8	9	10	11	12
13	14	15	16	17	18
19	20	21	22	23	24
25	26	27	28	29	30
31	32	33	34	35	36

**DRAINAGE PLAN
WEST HIGH SCHOOL
2ND ADDITION**

Baughman Company, P.A.
1111 N. WEST ST., SUITE 201
WICHITA, KS 67202
TEL: 316-261-7133
FAX: 316-261-7134