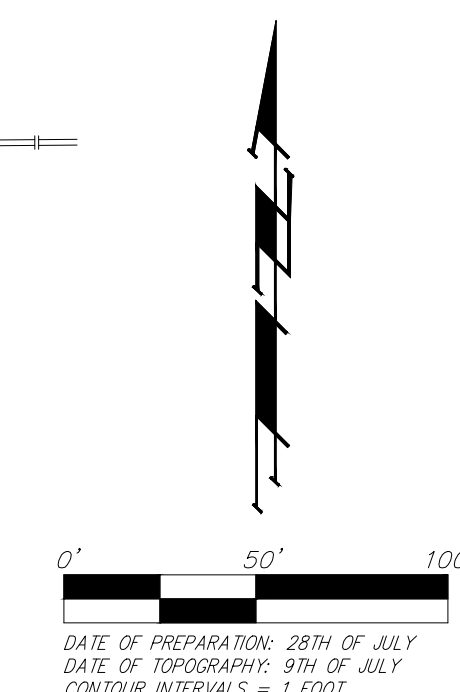
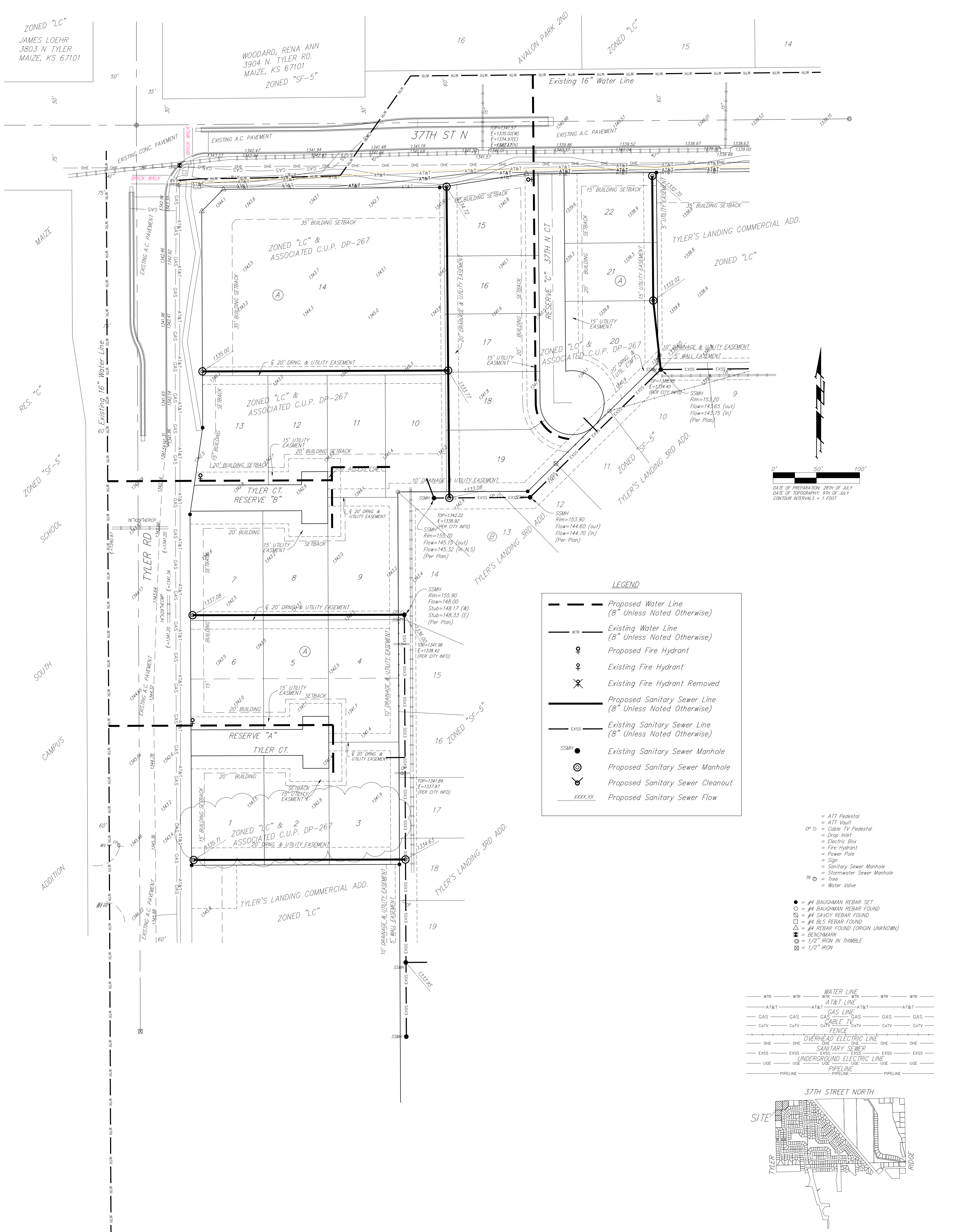


UTILITY CONCEPT

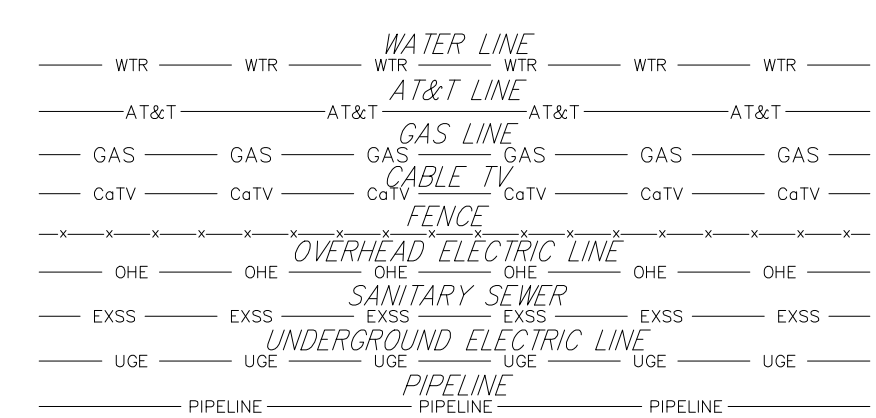
TYLER'S LANDING 5TH ADDITION WICHITA, SEDGWICK COUNTY, KANSAS



LEGEND

	Proposed Water Line (8" Unless Noted Otherwise)
	Existing Water Line (8" Unless Noted Otherwise)
	Proposed Fire Hydrant
	Existing Fire Hydrant
	Existing Fire Hydrant Removed
	Proposed Sanitary Sewer Line (8" Unless Noted Otherwise)
	Existing Sanitary Sewer Line (8" Unless Noted Otherwise)
	Existing Sanitary Sewer Manhole
	Proposed Sanitary Sewer Manhole
	Proposed Sanitary Sewer Cleanout
	Proposed Sanitary Sewer Flow

- = #4 BAUGHMAN REBAR SET
- = #4 BAUGHMAN REBAR FOUND
- = #4 SAVOY REBAR FOUND
- = #4 BLS REBAR FOUND
- = #4 REBAR FOUND (ORIGIN UNKNOWN)
- = BENCHMARK
- = 1/2" IRON IN THIMBLE
- = 1/2" IRON



TYLER'S LANDING 5TH ADDITION

16 JULY 2014

 Baughman Company, P.A.
 315 Ellis St., Wichita, KS 67211 P 316-262-7271 F 316-262-0149
 ENGINEERING | SURVEYING | PLANNING | LANDSCAPE ARCHITECTURE