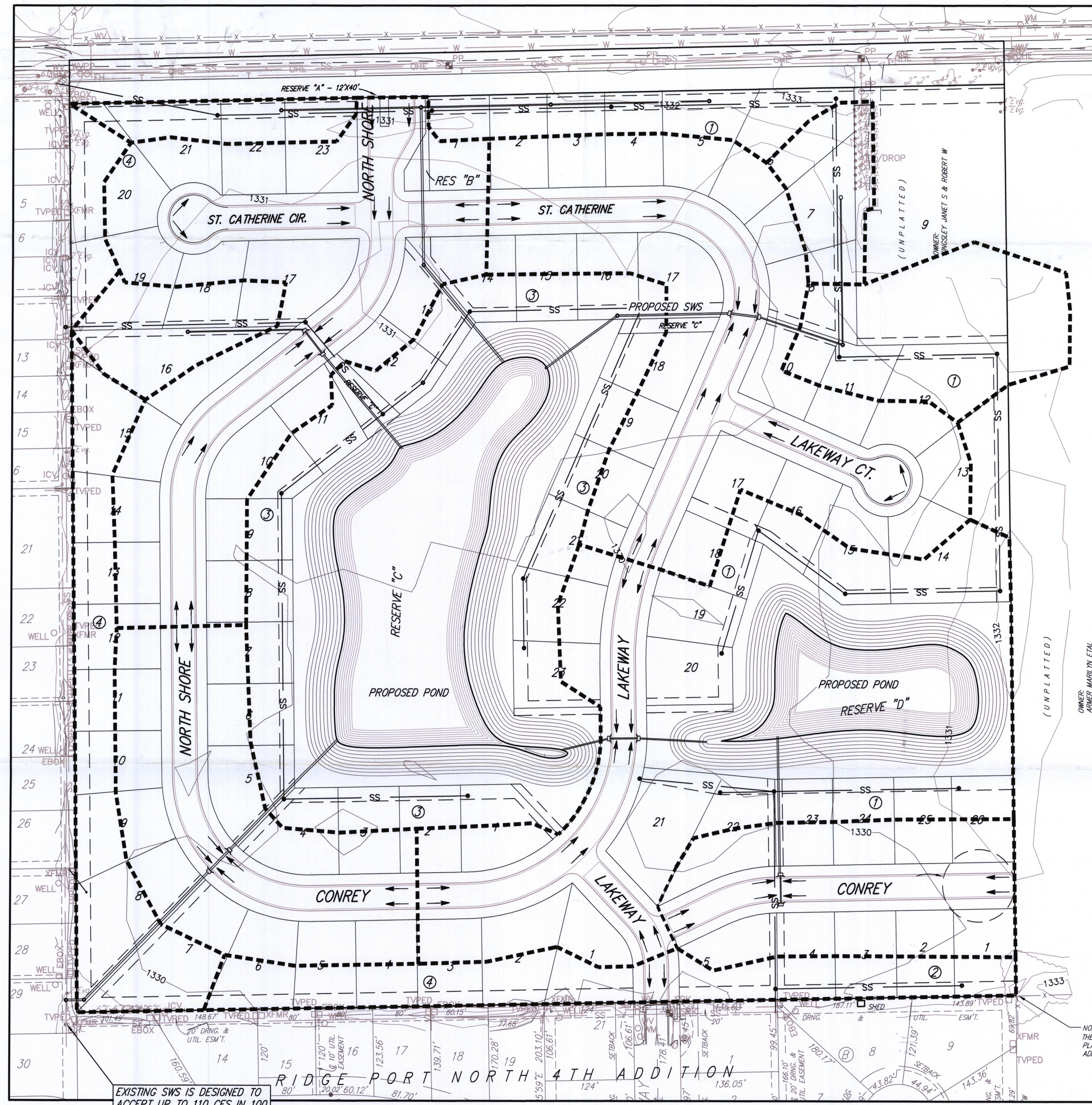
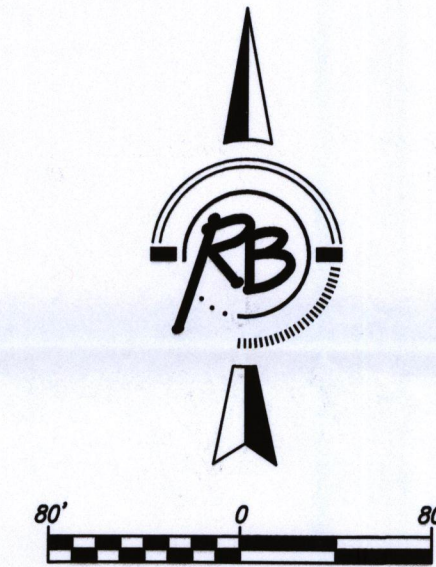


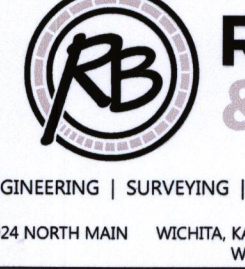
Drainage Concept
ST. CATHERINE'S LAKES
 Wichita, Sedgwick County, Kansas



NOTES

1. The site is 56% Corvile Clay loam (Hydrologic Soil Group D), 29% Salt Creek and Naron Fine Sandy Loam (Hydrologic Soil Group C) and 15% Pratt Loamy Fine Sand (Hydrologic Soil Group A).
2. Snout Water Quality Treatment Hoods will be installed on all street inlets that drain into onsite ponds. Ponds will provide additional water quality treatment as well.
3. On-site Ponds will provide storm water detention/retention as well channel protection volume.
4. Existing Storm Sewer along the west and south perimeters will be used to convey rear yard drainage in those areas. The drainage plan for Ridge Port North 4th Addition was specifically designed for that to occur.
5. The drainage plan for Ridge Port 4th allows for 110 cfs to be discharged from this proposed addition into the existing storm sewer in Lot 13, Block A of Ridge Port 4th Addition. The discharge pipe from the onsite ponds will be sized to limit the outflow below that amount.



THE STEPPES AT ARK VALLEY DRAINAGE CONCEPT	
SEAL: _____ DATE: May 9, 2014 DESIGNED BY: KWL DRAWN BY: KWL CHECKED BY: KWL REVIEWED BY: _____ PROJECT NUMBER: _____ SHEET NUMBER: _____ SHEET TITLE: _____	 RUGGLES & BOHM ENGINEERING SURVEYING LANDSCAPE ARCHITECTURE GOVERNMENT 500 NORTH MAIN STREET, SUITE 100, WICHITA, KS 67202-2445 WWW.RUGGLESANDBOHM.COM PROJECT NUMBER: _____ SHEET NUMBER: _____ SHEET TITLE: _____ SCALE: _____ DATE: _____ DRAWN BY: _____ CHECKED BY: _____ REVIEWED BY: _____ PROJECT NUMBER: _____ SHEET NUMBER: 1 SHEET TITLE: _____ OF 1