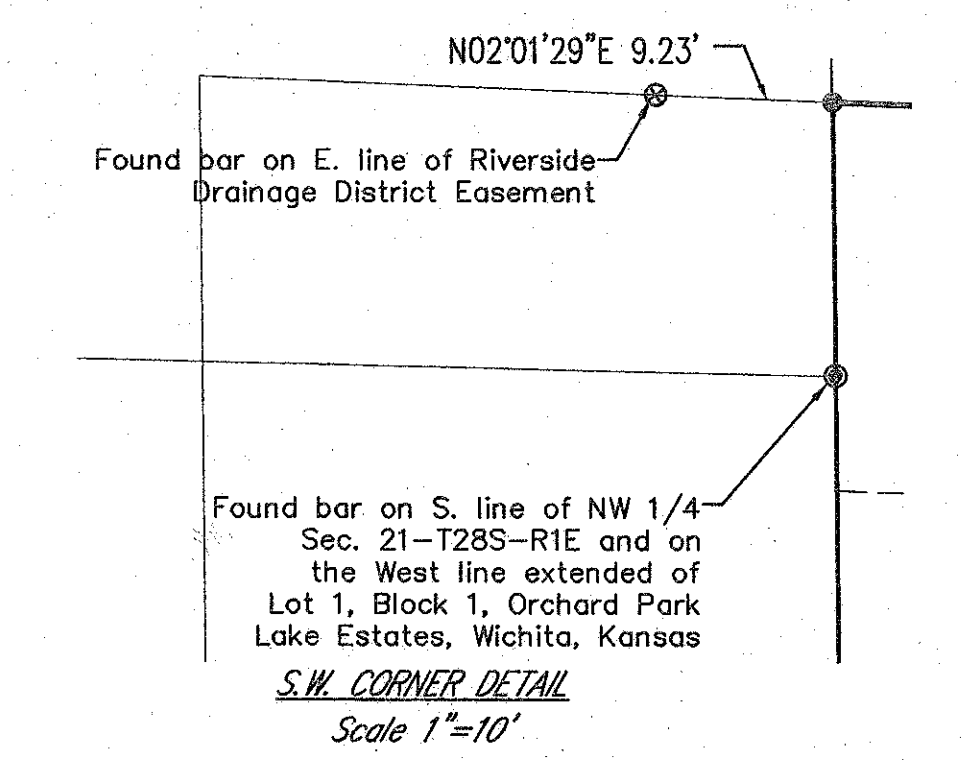


LEGEND

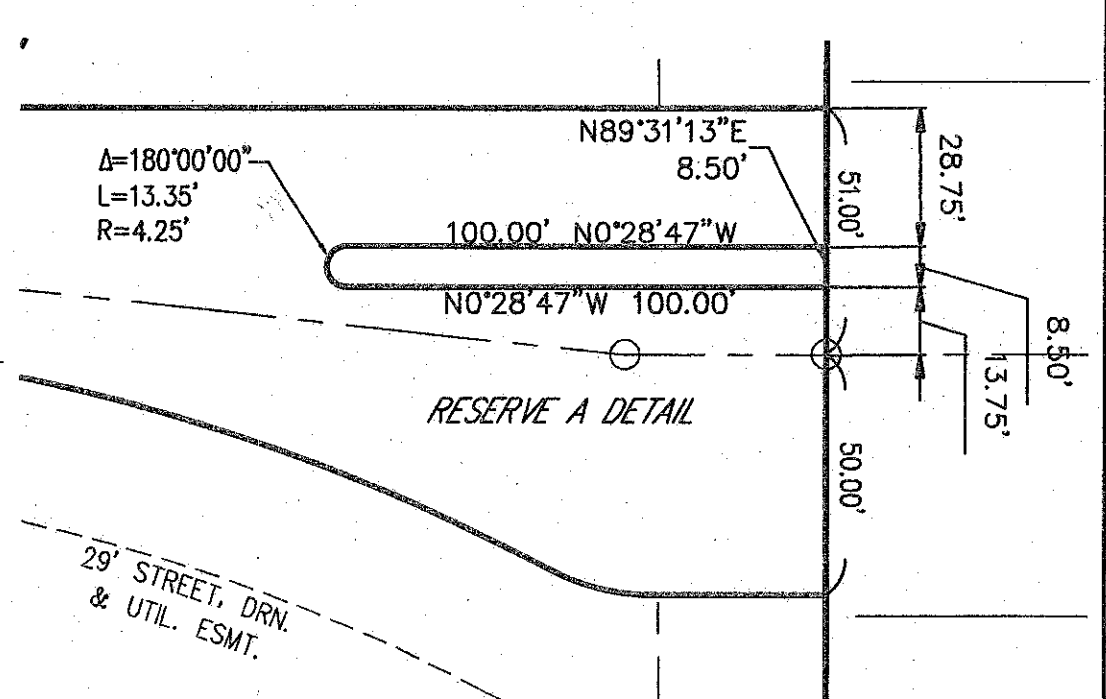
- ⊙ 1 1/2" Pipe Found
- ⊗ Mooring Bar & Cap Found
- ⊠ Section Corner Found
- ⊙ 5/8" Bar w/ Poe Cap Set

Bench Mark
City of Wichita bench mark disk, 20.7' E. of E. Broadway curb and 41.5' S. of centerline Custy. Elevation 1274.71 NAVD88 (Elevation 86.82 city datum)

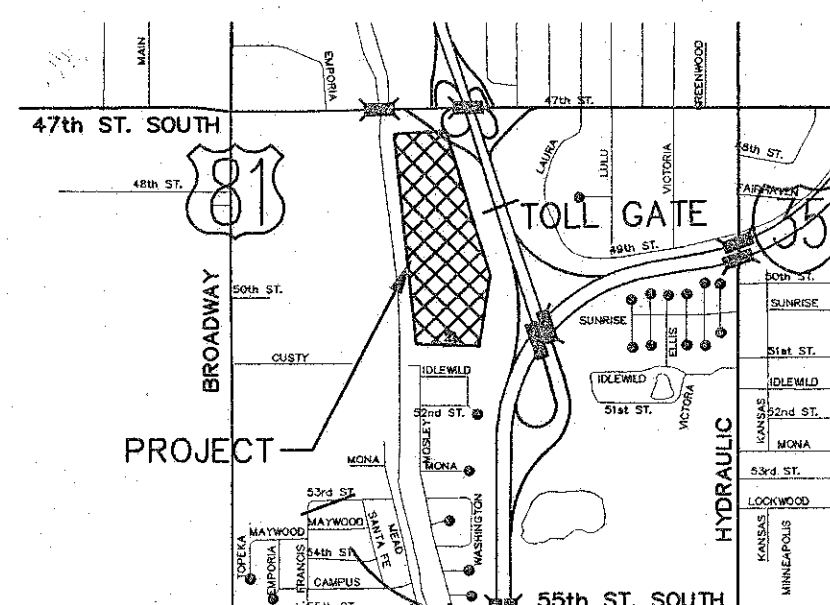
Bench Mark
Plus cut on Southwest corner 47th St. bridge over Riverside drainage channel at end of wingwall. Elevation 1273.28



- NOTES:**
- This plat is subject to the Provisions of Southfork Commercial Addition Community Unit Plan, DP-249 on file with the Metropolitan Area Planning Dept.
 - This plat is subject to a drainage plan on file with City Public Works.



RESERVE A DETAIL



LOCATION MAP
Not to Scale

Line #	Length	Direction
L10	155.50	N0° 28' 47" W
L11	42.02	N0° 28' 47" W
L12	164.71	N5° 29' 05" E
L13	71.00	N84° 33' 38" E
L15	41.50	S80° 53' 49" W

Curve #	Length	Radius	Delta
C20	314.30	425.00	42° 22' 17"
C21	207.80	500.00	23° 48' 44"
C22	182.56	1370.00	7° 38' 06"
C23	22.51	46.00	28° 02' 31"
C24	416.45	409.00	58° 20' 22"
C25	85.81	441.00	11° 08' 56"
C26	206.70	441.00	26° 51' 16"
C27	46.54	409.00	6° 31' 10"
C28	214.64	484.00	25° 24' 31"
C29	122.85	516.00	13° 38' 28"
C30	88.68	516.00	9° 50' 47"
C31	73.62	1354.00	3° 06' 54"
C32	71.89	1386.00	2° 58' 19"
C33	25.37	16.00	90° 51' 23"
C34	404.42	87.00	266° 20' 12"
C35	188.67	444.00	24° 20' 48"
C36	112.80	1386.00	4° 39' 47"

Southern Star Central Gas Pipeline Easement Centerline

Line #	Length	Direction
STAR16	9.82	N89° 21' 42" E
STAR17	38.05	N35° 31' 40" W
STAR18	40.82	N24° 16' 40" W
STAR19	331.65	N19° 28' 47" W
STAR20	540.17	S89° 31' 13" W
STAR21	44.48	S85° 48' 58" W
STAR22	46.04	N71° 30' 09" W
STAR33	191.96	S57° 43' 00" E
STAR34	209.05	S61° 31' 34" E
STAR35	261.50	S62° 55' 58" E
STAR36	209.60	S71° 30' 09" E

Minimum Building Pad Elevation for Lowest Opening into Structures

Lots 1-8, Block 1	1272.00 NAVD88 *
-------------------	------------------

* Or as approved by the City Stormwater Engineer

Scale 1" = 100'

SOUTHFORK COMMERCIAL ADDITION

TO WICHITA, SEDGWICK COUNTY, KANSAS

FINAL TRACING REC'D 9.26.14

Date of Preparation: 8/18/2014
F:\APPS\DCA\Plot\Southfork\One_Step_Final_Plot-3211.dwg

PE POE & ASSOCIATES, INC.
CONSULTING ENGINEERS
5940 E. Central, Suite 200 ■ Wichita, KS 67208-4242
Phone 316/685-4114 ■ FAX 316/685-4444

