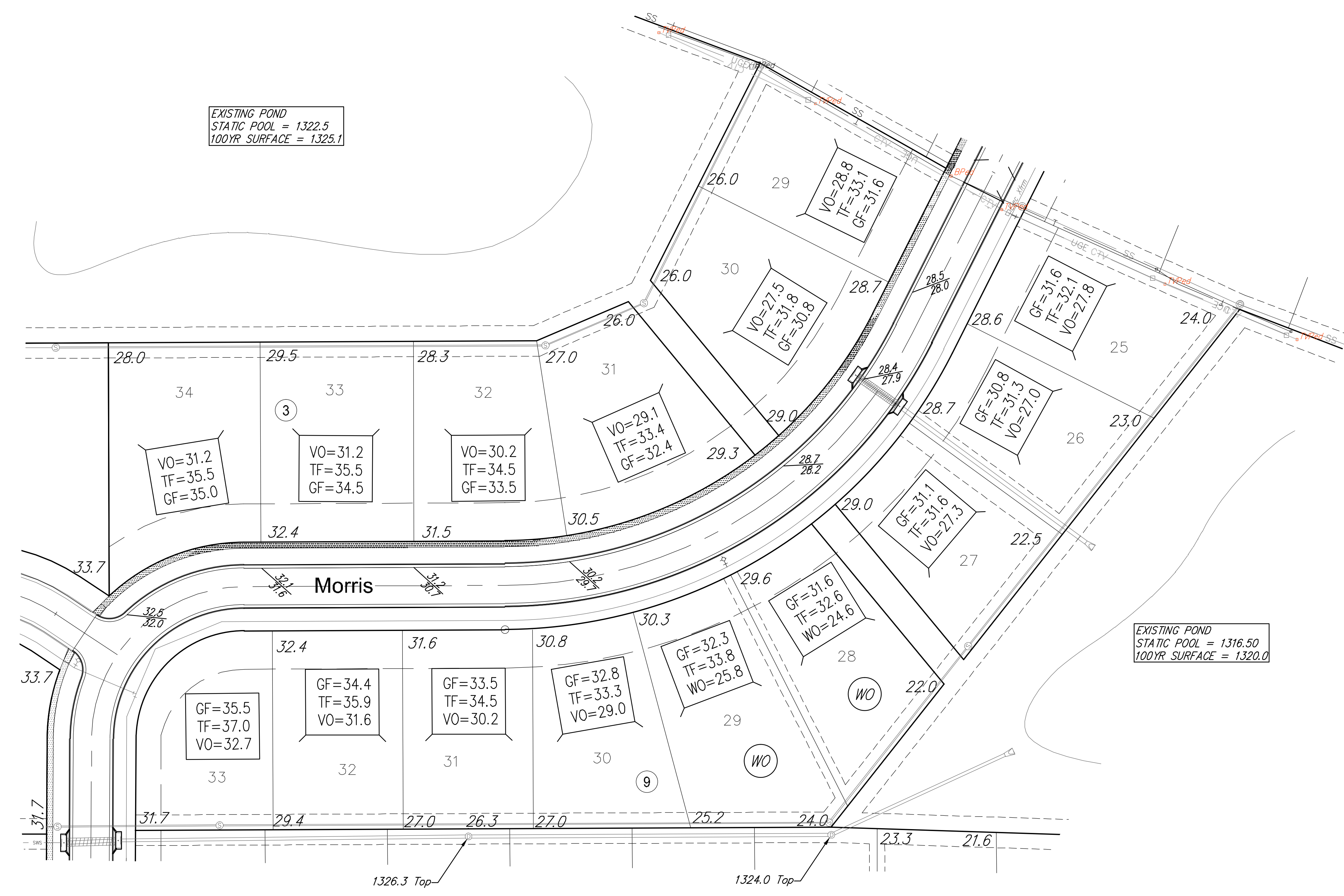
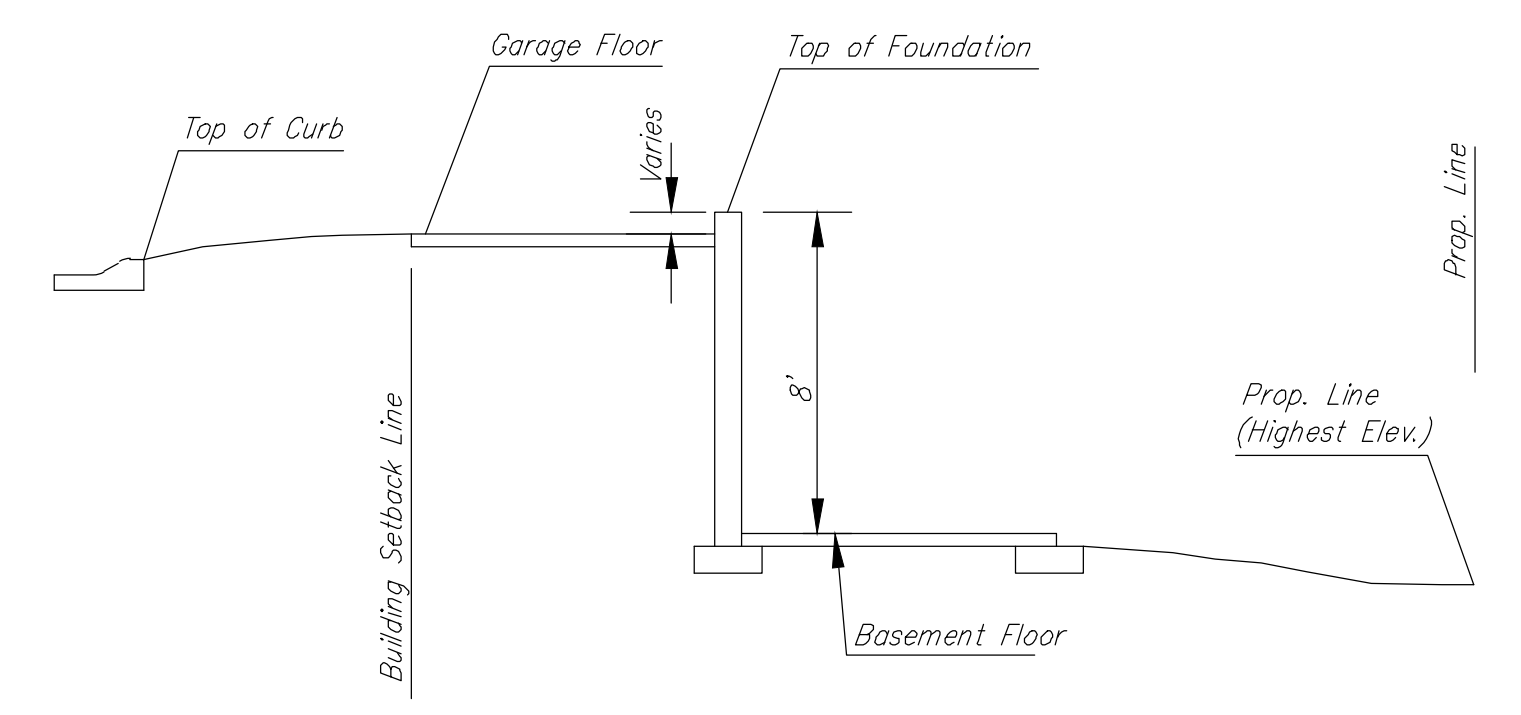


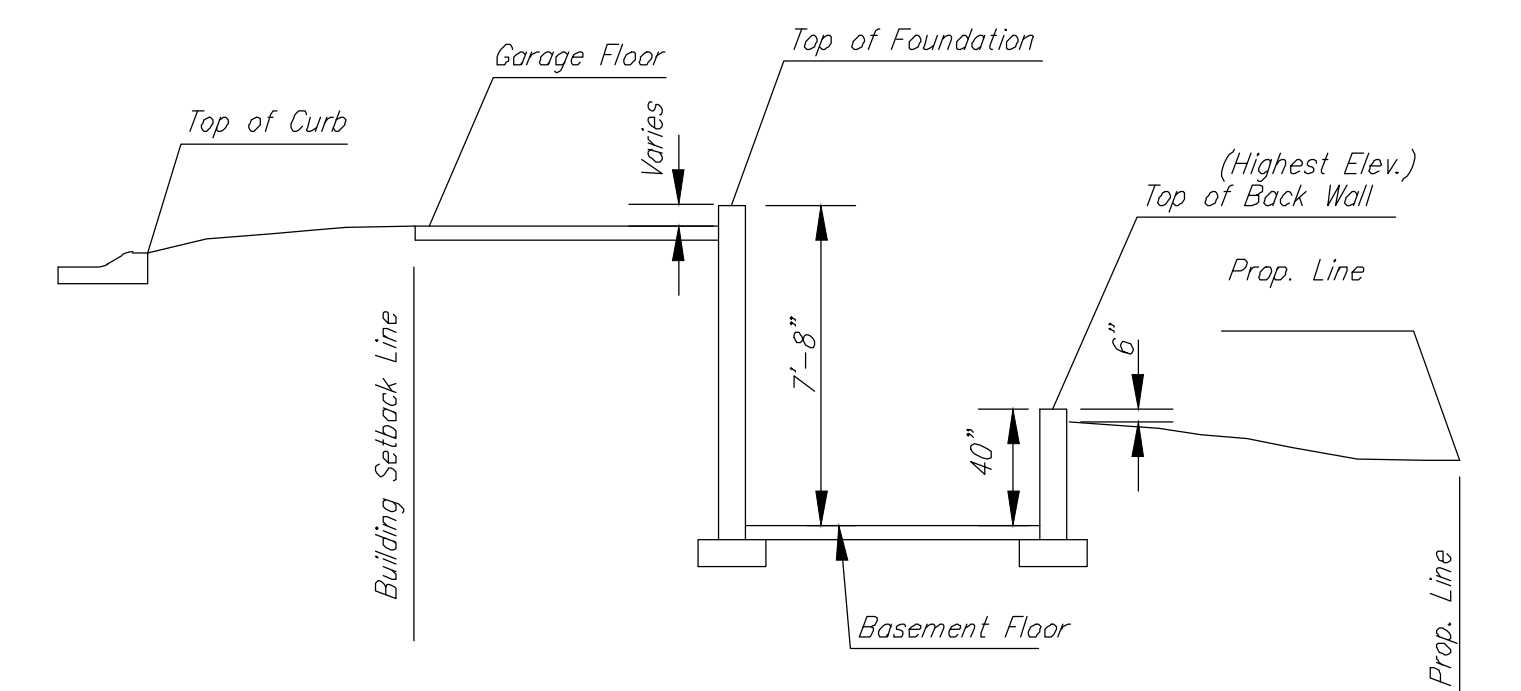
EXISTING POND  
 STATIC POOL = 1322.5  
 100YR SURFACE = 1325.1



EXISTING POND  
 STATIC POOL = 1316.50  
 100YR SURFACE = 1320.0



Section Through Typical Walk out Basement



Section Through Typical View-Out Basement

- BENCH MARK#1: SQUARE ON SOUTH END HEADWALL 58.5± S. OF NW COR. SEC. 26, T27, R2E. ELEV. 1308.79 (NAVD88)
- BENCH MARK#2: RAILROAD SPK. WEST FACE OF POWER POLE 30± WEST OF EAST 1/4 COR. SEC. 26, T27, R2E. ELEV. 1314.88 (NAVD88)

<b>Clear Creek 2nd Addition 4-Corner</b>			
			DATE June 23, 2014
	<b>RUGGLES &amp; BOHM</b> <small>ENGINEERING   SURVEYING   LANDSCAPE ARCHITECTURE   GOVERNMENT</small> <small>804 NORTH MAIN WICHITA, KANSAS 67203 P (316) 264-8008 F (316) 264-4621 WWW.RBKANSAS.COM</small>		DESIGN EJG
PROJECT NUMBER 472-85132	RS JOB NO. 4161E	DWG. SCALE 1"=40'	DRAWN EJG
DRAWING FILE Engineering Base Ph 2 {4-Corner}			REVIEW ...
			SHEET <b>1</b>
			OF <b>1</b>