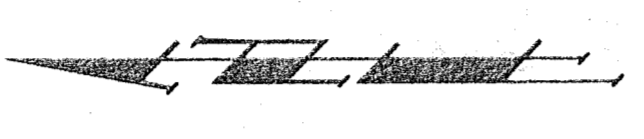
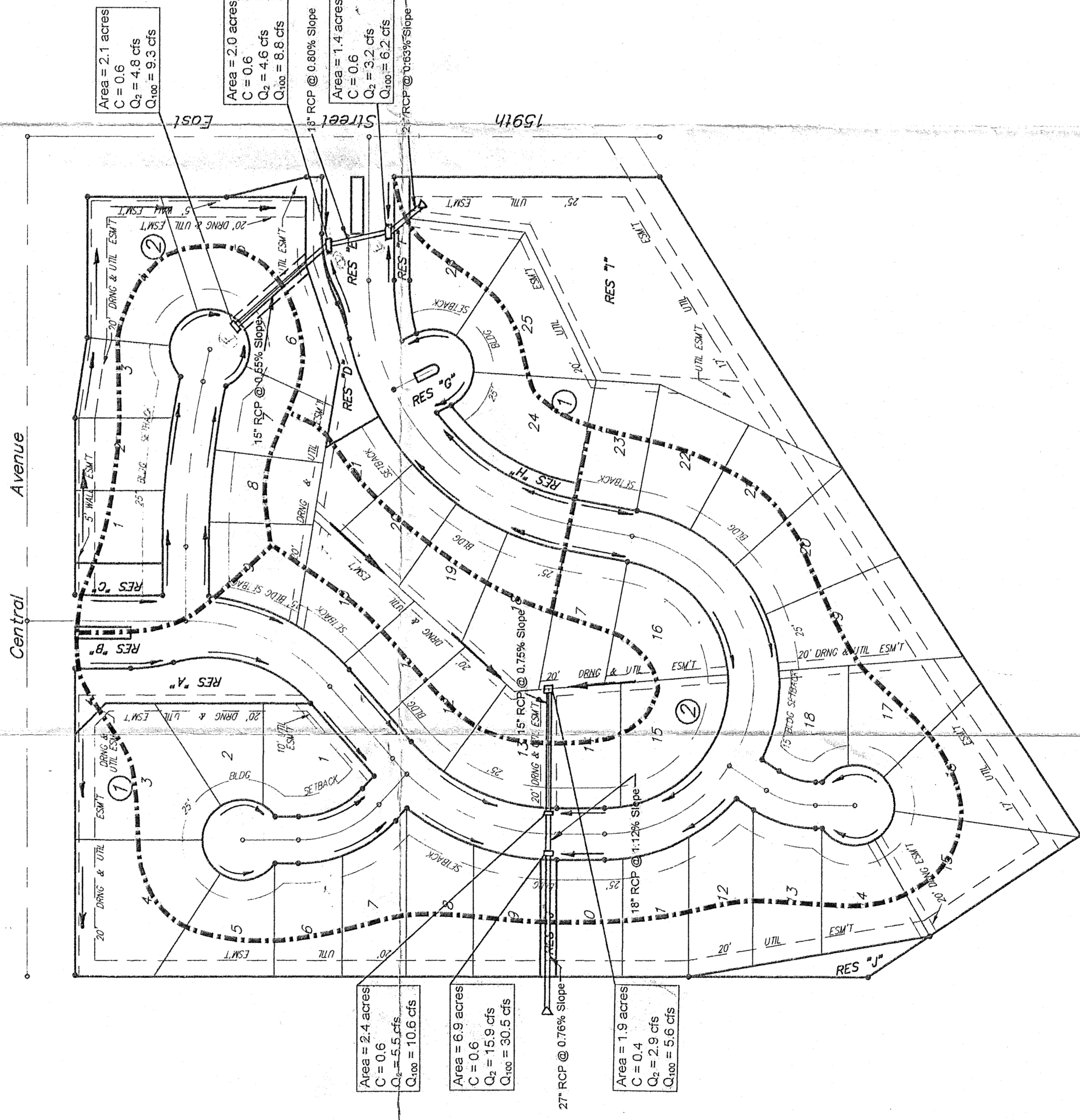


# DRAINAGE PLAN

# BELLE TERRE THIRD ADDITION

## SEDGWICK COUNTY, KANSAS.



Scale: 1" = 100'

MINIMUM BUILDING PAD ELEVATIONS FOR LOWEST OPENING OF STRUCTURE

Lot & Block	City Datum	Elevation	M.S.L.
4 & 5 - Bk 1	127.6	126.0	126.0
6, 7, 8, 9, 10 - Bk 1	126.6	124.0	124.0
11, 12, 13, 14, 15 - Bk 1	126.6	124.0	124.0
21, 22, 23, 25, 26 - Bk 2	131.6	131.0	131.0

**BELLE TERRE THIRD ADDITION  
DRAINAGE PLAN**

**BAUGHMAN COMPANY P. A.**  
ENGINEERING & SURVEYING  
316/262-7271 • 315 ELLIS • WICHITA, KANSAS 67211

DESIGN	DRAWN	UTIL CHECK'D	DATE	SCALE
JDS	JDS	JDS	May 7, 1984	1" = 100'

PROJECT NUMBER: \_\_\_\_\_  
SHEET: **1** OF **1**