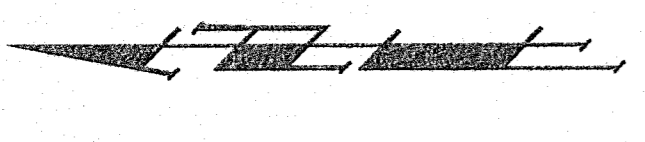
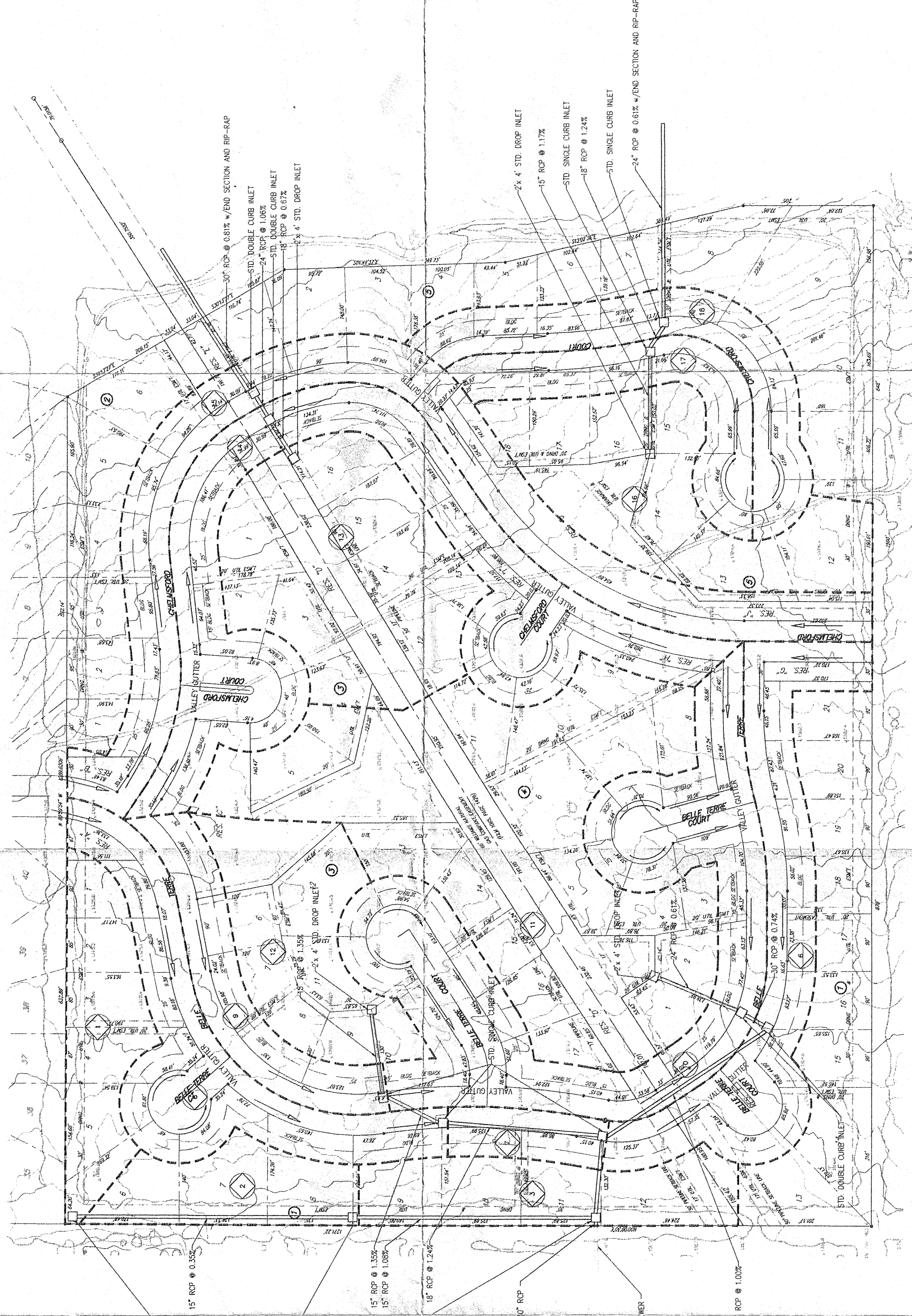


DRAINAGE PLAN BELLE TERRE SECOND ADDITION SEDGWICK COUNTY, KANSAS



Scale: 1" = 100'
 • = 1/2" Rebar w/ "Baughman" Cap (Set)
 --- Sub-Basin Boundary
 (NO) Sub-Basin Reference Number

BENCHMARK:
 R.R. Spike in H.L.P. located approx. 35' southwest of the intersec. of Central and 159th St. E.
 Elev. = 1325.84 M.S.L.
 Elev. = 133.44 City Datum



SUB-BASIN	AREA (Acres)	"C"	"D2"	"D5"	"Q10"	"Q100"
Belle Terre Second Addition						
1	56196	1.29	0.40	2.0	2.4	2.7
2	43616	1.00	0.40	1.5	1.8	2.1
3	60419	1.39	0.40	2.1	2.6	2.9
4	97258	2.23	0.64	4.6	5.6	6.3
5	19268	0.44	0.64	0.9	1.1	1.2
6	88455	2.03	0.64	4.2	5.1	5.7
7	48540	1.11	0.64	2.3	2.8	3.1
8	171096	3.93	0.64	8.1	9.8	11.0
9	262976	6.03	0.40	9.2	11.1	12.5
10	127160	2.87	0.40	2.7	3.3	3.7
11	161600	3.71	0.64	7.6	9.4	10.4
12	149222	3.43	0.64	7.0	8.5	9.6
13	103714	2.38	0.40	3.6	4.4	4.9
14	81182	1.17	0.64	2.4	2.9	3.3
15	64104	1.46	0.64	3.0	3.7	4.1
16						
17						
18						

Line	Manhole From	Manhole To	Length (feet)	Pipe Size (Inches)	Slope (percent)	Fall Drop (feet)	Manhole Drop (feet)
1	11	10	150	24	0.61	0.92	0.50
	10	6	50	30	0.74	0.37	0.20
	6	7	310	30	1.00	3.10	0.30
	7	3	130	30	2.00	2.60	0.30
	3	15	15	30	0.40	0.05	MATCH
1A	12	9	140	15	0.65	0.91	0.20
	9	8	100	15	1.35	1.35	0.25
	8	7	250	18	1.24	3.10	1.00
1B	1	2	440	15	0.35	1.54	0.10
	2	3	560	15	1.08	4.19	1.25
2	13	14	70	18	0.67	0.47	0.50
	14	15	50	24	1.05	0.53	0.50
	15	Outfall	250	30	0.93	2.03	
3	16	17	160	15	1.17	1.87	0.25
	17	18	50	18	1.24	0.62	0.50
	18	Outfall	300	24	0.61	1.83	

HYDROPLAN BELLETERRE 94-04-1179

**BELLE TERRE SECOND ADDITION
DRAINAGE PLAN**

BAUGHMAN COMPANY P. A.
 ENGINEERING & SURVEYING
 316/262-7271 • 315 ELLIS • WICHITA, KANSAS 67211

PROJECT NUMBER: _____

DESIGN: JDS DRAWN: JDS UTIL. CHECKED: _____ DATE: October 6, 1994 SCALE: 1" = 100' SHEET: 1 OF 1

Plot File
 Belle Terre Sub
 10-1-94

MINIMUM BUILDING PAD ELEVATIONS
FOR LOWEST OPENING OF STRUCTURE

Lot & Block	Elevation M.S.L.	City Datum
6 - BLK B	1313.0	125.6
1, 2 - BLK E	1312.0	124.6
3, 4 - BLK E	1311.0	123.6
5, 6 - BLK E	1310.0	122.6
7 - BLK E	1309.0	121.6
8, 9 - BLK E	1308.0	120.6

EXISTING 34" RCP TO BE CONSTRUCTED WITH STREET AND SEWER IMPROVEMENTS FOR VOUCHERS AT SUBMITTER'S RISK

30" RCP @ 0.40% EXTENDED FROM EXISTING 30" RCP

2x4 STD. DROP INLET

15" RCP @ 0.15%

15" RCP @ 1.15%

15" RCP @ 1.05%

18" RCP @ 1.24%

30" RCP @ 1.00%