

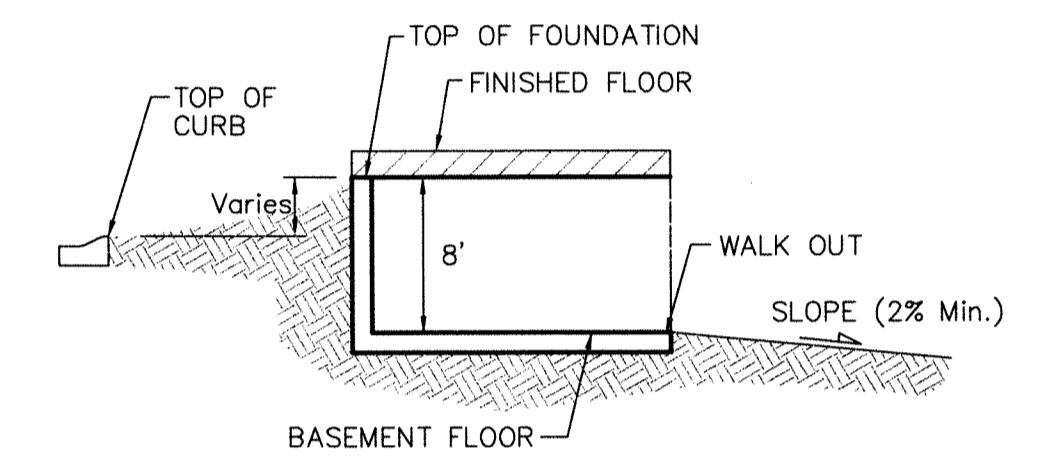
Scale: 1" = 60'

Benchmarks

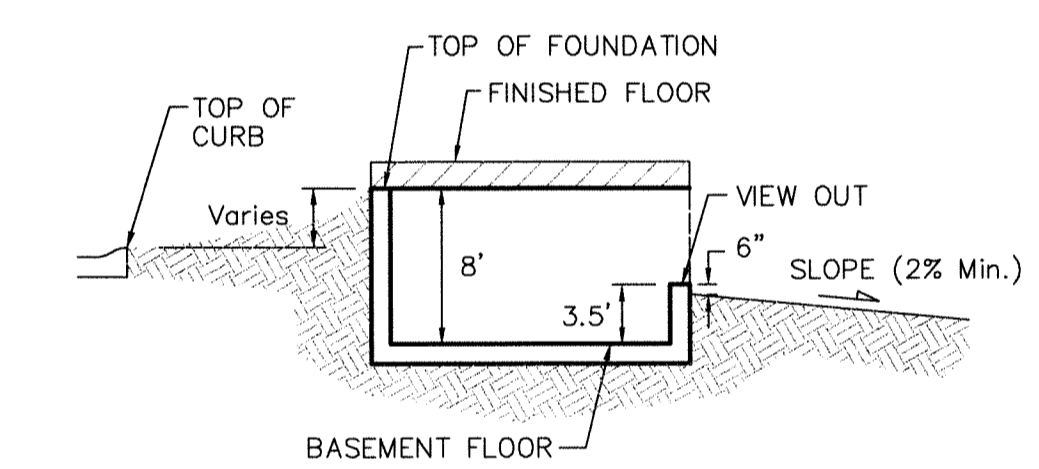
City of Wichita Disc at Southwest Corner of 135th St. W. & 13th St. N
 30.00± S. of \odot
 35.00± W. of \odot
 Elev. = 1355.65 NGVD29

Small Railroad Spike in 2nd HLP W. of 135th St. W. on South Side of 13th St. N., (N. Face of HLP).
 Elev. = 1359.50 NGVD29

Small Railroad Spike in 4th HLP W. of 135th St. W. on South Side of 13th St. N., (N. Face of HLP).
 Elev. = 1366.64 NGVD29



TYPICAL WALK OUT DETAIL
NO SCALE



TYPICAL VIEW OUT DETAIL
NO SCALE

NOTES:
 Proposed Top of Foundation Elevations Are Shown On Plans. Contractor to Set Finished Floor Elevations.

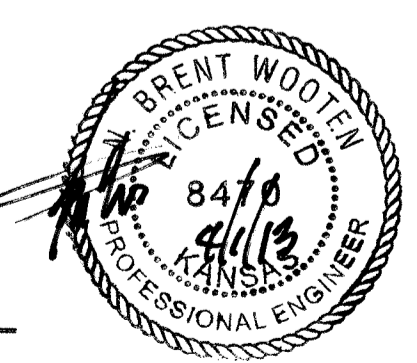
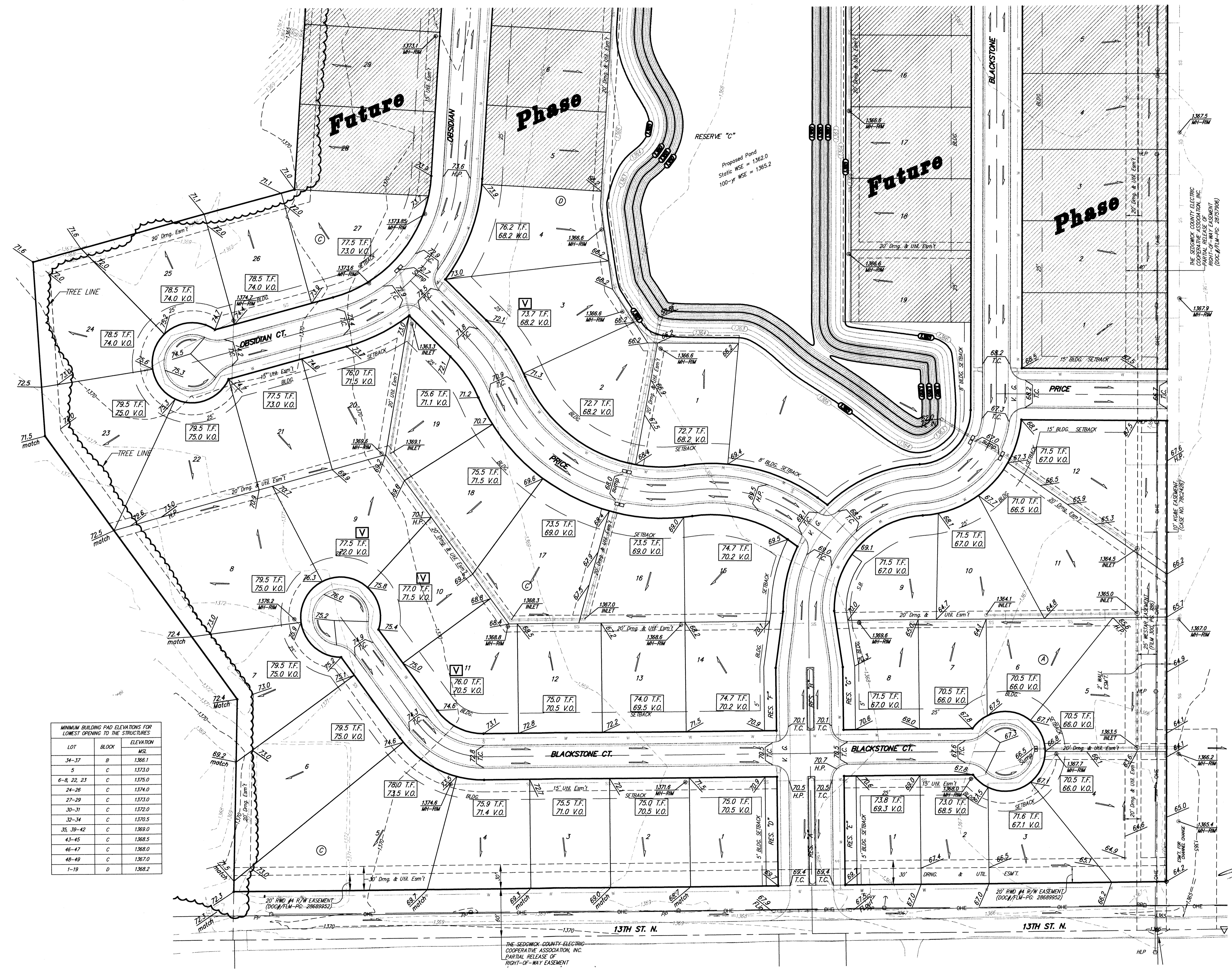
All Street Elevations Shown on Plans Are for Top of Curb (Full-Height).

This Grading Plan is Designed with Walk-out & View-Out Basements. Elevations Shown as (XX.X V.O. or XX.X W.O.)

Lot dimensions have been omitted on this plan, refer to the recorded plat for this information.

Indicates Non-Typical View-Out (Use 5.5' From T.F. to V.O.)

LOT	BLOCK	ELEVATION
34-37	B	1366.1
5	C	1373.0
6-8, 22, 23	C	1375.0
24-26	C	1374.0
27-29	C	1373.0
30-31	C	1372.0
32-34	C	1370.5
35, 39-42	C	1369.0
43-45	C	1368.5
46-47	C	1368.0
48-49	C	1367.0
1-19	D	1368.2



Baughman		Blackstone Addition Grading Plan City of Wichita, Kansas	
Baughman Company, P.A. 315 Ellis St. Wichita, KS 67211 P 316-262-7271 F 316-262-0149 ENGINEERING SURVEYING PLANNING LANDSCAPE ARCHITECTURE			
PROJECT NUMBER	DESIGN	DRAWN	
REVISIONS:	JAK	APPROVED	DATE
9/12/08			7/22/08
Final Phase I Street Curb		SCALE	1" = 60'
		SHEET	1 OF 3