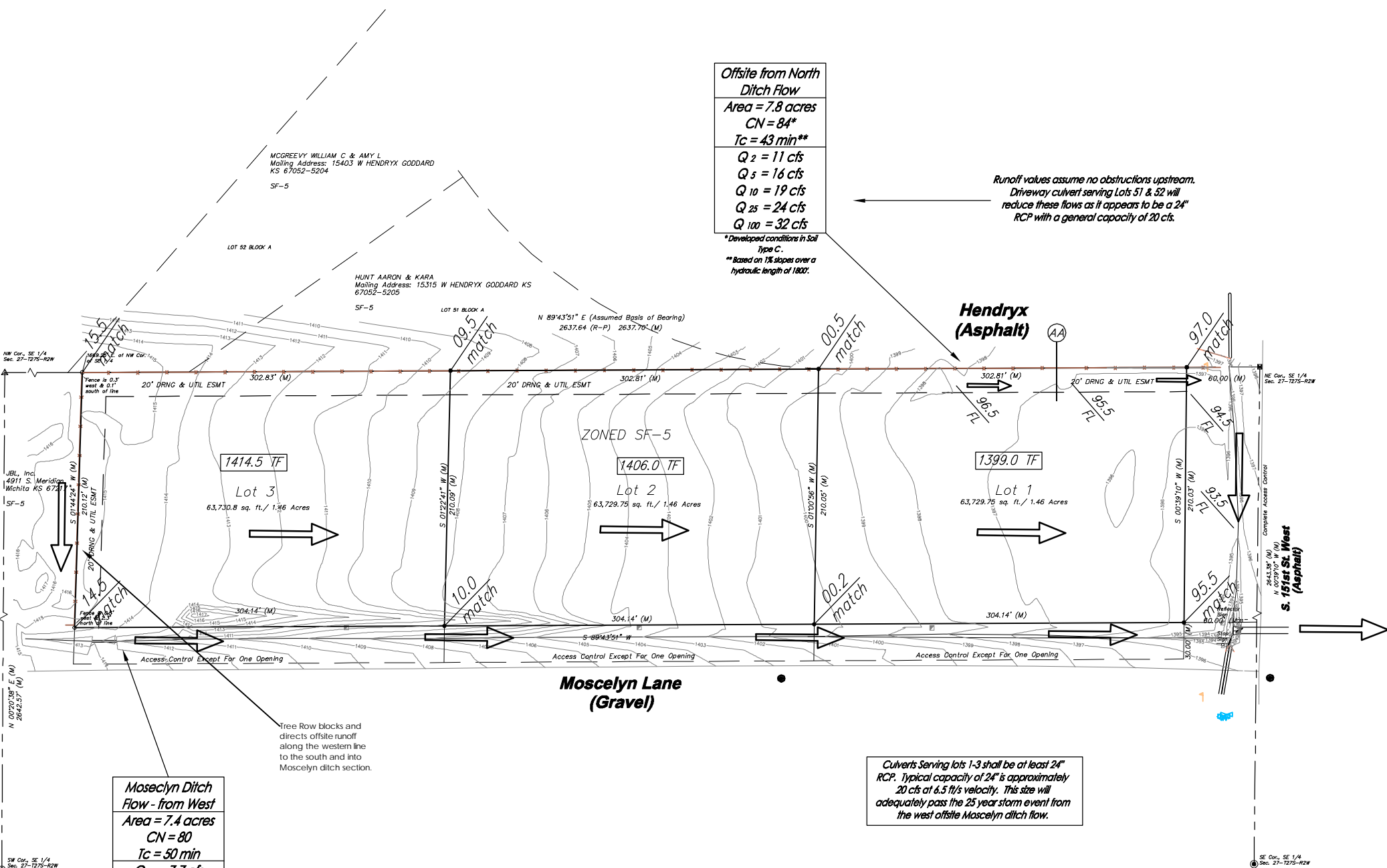


PRELIMINARY GRADING PLAN

Moscelyn Meadows Addition

WICHITA, SEDGWICK COUNTY, KANSAS

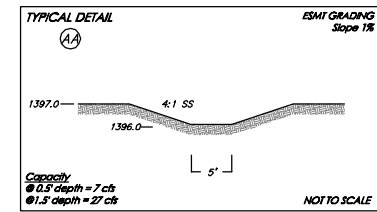


Offsite from North Ditch Flow
 Area = 7.8 acres
 CN = 84*
 Tc = 43 min**
 Q₂ = 11 cfs
 Q₅ = 16 cfs
 Q₁₀ = 19 cfs
 Q₂₅ = 24 cfs
 Q₁₀₀ = 32 cfs

* Developed conditions in Soil Type C.
 ** Based on 1% slopes over a hydraulic length of 1800'.

Runoff values assume no obstructions upstream.
 Driveway culvert serving Lots 51 & 52 will reduce these flows as it appears to be a 24" RCP with a general capacity of 20 cfs.

Total Site Area = 4.4 acres Tc = 15 min	
EXISTING C' = 0.55	DEVELOPED C' = 0.61
Q ₂ = 9.3 cfs	Q ₂ = 10 cfs
Q ₅ = 11 cfs	Q ₅ = 12 cfs
Q ₁₀ = 13 cfs	Q ₁₀ = 14 cfs
Q ₁₀₀ = 18 cfs	Q ₁₀₀ = 20 cfs



Moscelyn Ditch Flow - from West
 Area = 7.4 acres
 CN = 80
 Tc = 50 min
 Q₂ = 7.7 cfs
 Q₅ = 12 cfs
 Q₁₀ = 15 cfs
 Q₂₅ = 18 cfs
 Q₁₀₀ = 26 cfs

Culverts Serving lots 1-3 shall be at least 24" RCP. Typical capacity of 24" is approximately 20 cfs at 4.5 ft/s velocity. This size will adequately pass the 25 year storm event from the west offsite Moscelyn ditch flow.

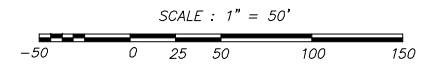
PRELIMINARY GRADING PLAN
!! NOT FOR CONSTRUCTION !!

Due to the size of the lots and variability of structure placement, structure elevations as shown are likely to change. These elevations will be more accurately established at the time of a specific lot grading plan prior to each lots construction.

JOB DESCRIPTION: PRELIMINARY PLAT	
PREPARED FOR: JBL, Inc. 4911 S. Meridian Wichita, KS 67217	
JOB LOCATION: 151st St. E. & Moscelyn Ln	DATE OF PREPARATION: 08-21-2014
JOB NUMBER: A13655	SHEET 1 OF 1

AS and **S**urvey

520 S. Holland, Ste. 103 Wichita, KS 67209
 Ph: 316.262.2262 Fax: 316.262.2268
 surveyors@benchmarks.net



LEGEND:

- (M) = MEASURED OR CALCULATED FROM MEASUREMENT
- = FOUND 5/8" REBAR IN TRIMBLE (ORIGIN UNKNOWN)
- = FOUND 1/2" REBAR WITH LS #340 CAP
- △ = FOUND 3/4" IRON PIPE (ORIGIN UNKNOWN)
- = FOUND ALUMINUM CAP
- = SET 1/2" REBAR WITH LS #340 CAP
- = TELEPHONE RISER
- ↑ = PERMANENT MARKER (1-800-875-3302)
- = SIGN (As Noted)
- = MANHOLE
- = WATER VALVE
- = FIRE HYDRANT
- = FENCE

NOTES: This site is not expected to disturb more than 1 acre of ground surface and will not require water quality treatment. In the event that this overall site disturbs one acre or more, water quality treatment will need to be provided as part of the site development package.

Due to the site being under 5 total acres, and under 1 acre of disturbance, no detention or downstream channel protection is being provided.

This site lies within a FEMA SFHA Zone X per FEMA FIRM Panel 317 of 700 for Wichita, Sedgwick County, Kansas; effective May 2, 2012.

PRE-GRADE PLAN
MOSCELYN MEADOWS ADDITION
 13 NOV 2014

Baughman Company, P.A.
 315 E. St. Wichita, KS 67211 P: 316.262.2271 F: 316.262.0119

Baughman ENGINEERING PLANNING & LANDSCAPE ARCHITECTURE
 315 E. St. Wichita, Kansas 67211