

DRAINAGE CONCEPT

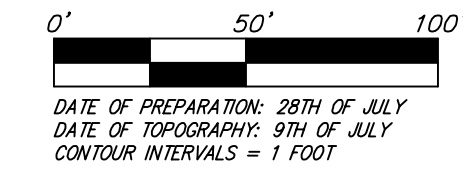
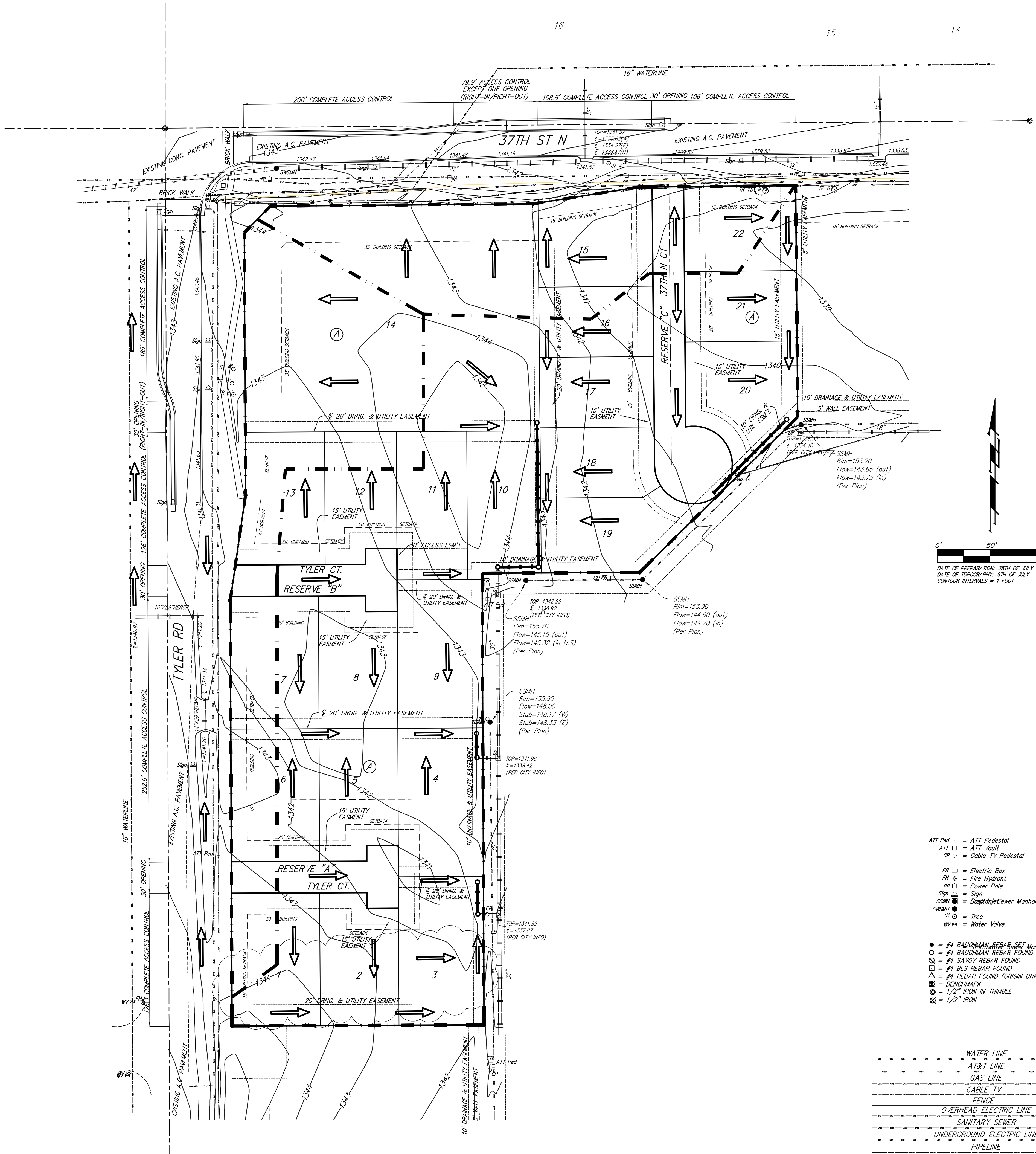
TYLER'S LANDING 5TH ADDITION

WICHITA, SEDGWICK COUNTY, KANSAS

16

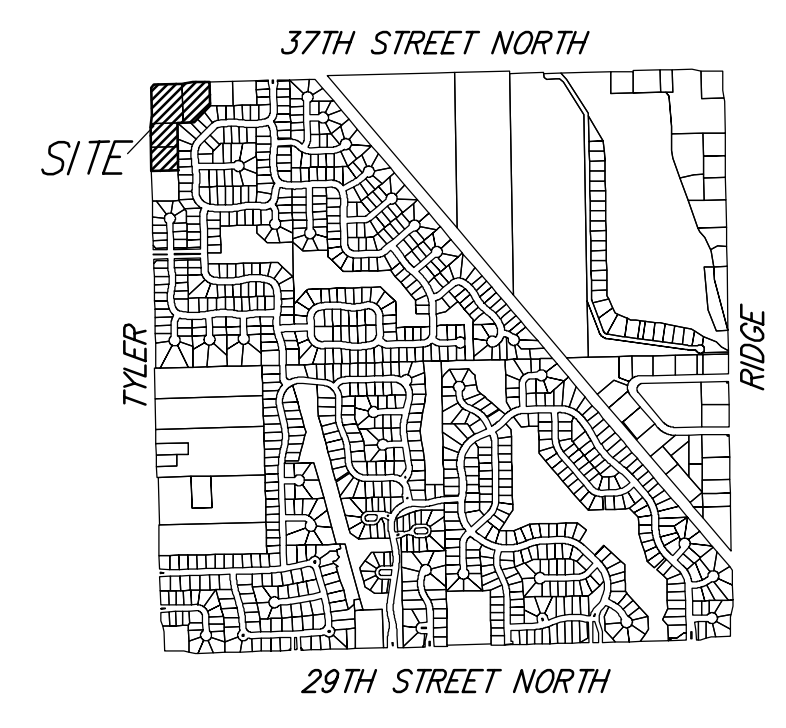
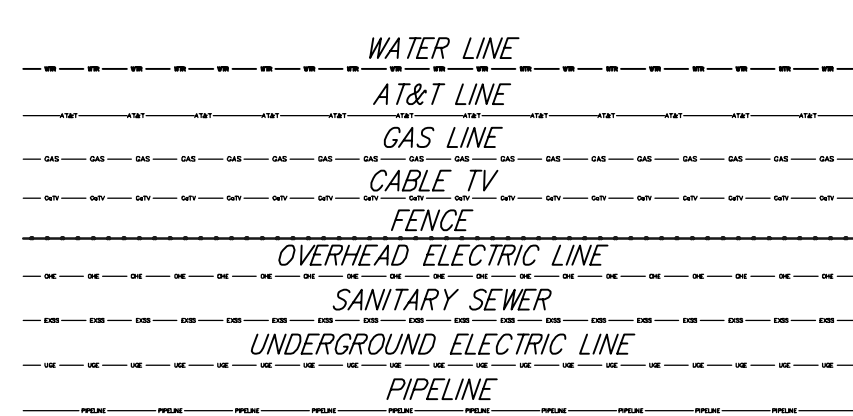
15

14



DATE OF PREPARATION: 28TH OF JULY
 DATE OF TOPOGRAPHY: 9TH OF JULY
 CONTOUR INTERVALS = 1 FOOT

- ATT Ped □ = ATT Pedestal
- ATT □ = ATT Vault
- CP □ = Cable TV Pedestal
- EB □ = Electric Box
- FH □ = Fire Hydrant
- PP □ = Power Pole
- Sign □ = Sign
- SSMH □ = Storm/Sewer Manhole
- SWSMH ● = Storm/Sewer Manhole
- TR ○ = Tree
- WV = Water Valve
- = #4 BAUGHMAN REBAR SET
- = #4 BAUGHMAN REBAR FOUND
- = #4 SAVOY REBAR FOUND
- = #4 BLS REBAR FOUND
- △ = #4 REBAR FOUND (ORIGIN UNKNOWN)
- ⊗ = BENCHMARK
- ⊙ = 1/2" IRON IN THIMBLE
- ⊠ = 1/2" IRON



VICINITY MAP
 SEC. 33, T26S, R1W

DRAINAGE CONCEPT TYLER'S LANDING 5TH ADDITION

B Baughman Company, P.A.
 315 Ellis St. Wichita, KS 67211 P 316-262-7271 F 316-262-0149
 ENGINEERING | SURVEYING | PLANNING | LANDSCAPE ARCHITECTURE

E:\Projects\Tyler's Landing 5th Addition 1403\030\Plan\Drawings\Tyler's Landing 5th Addition_P50eals.dwg 30 JULY 2014