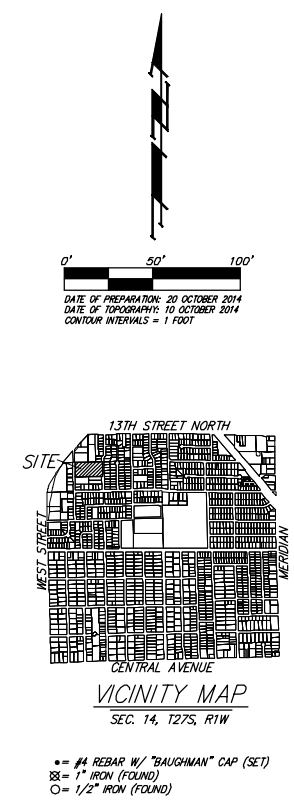
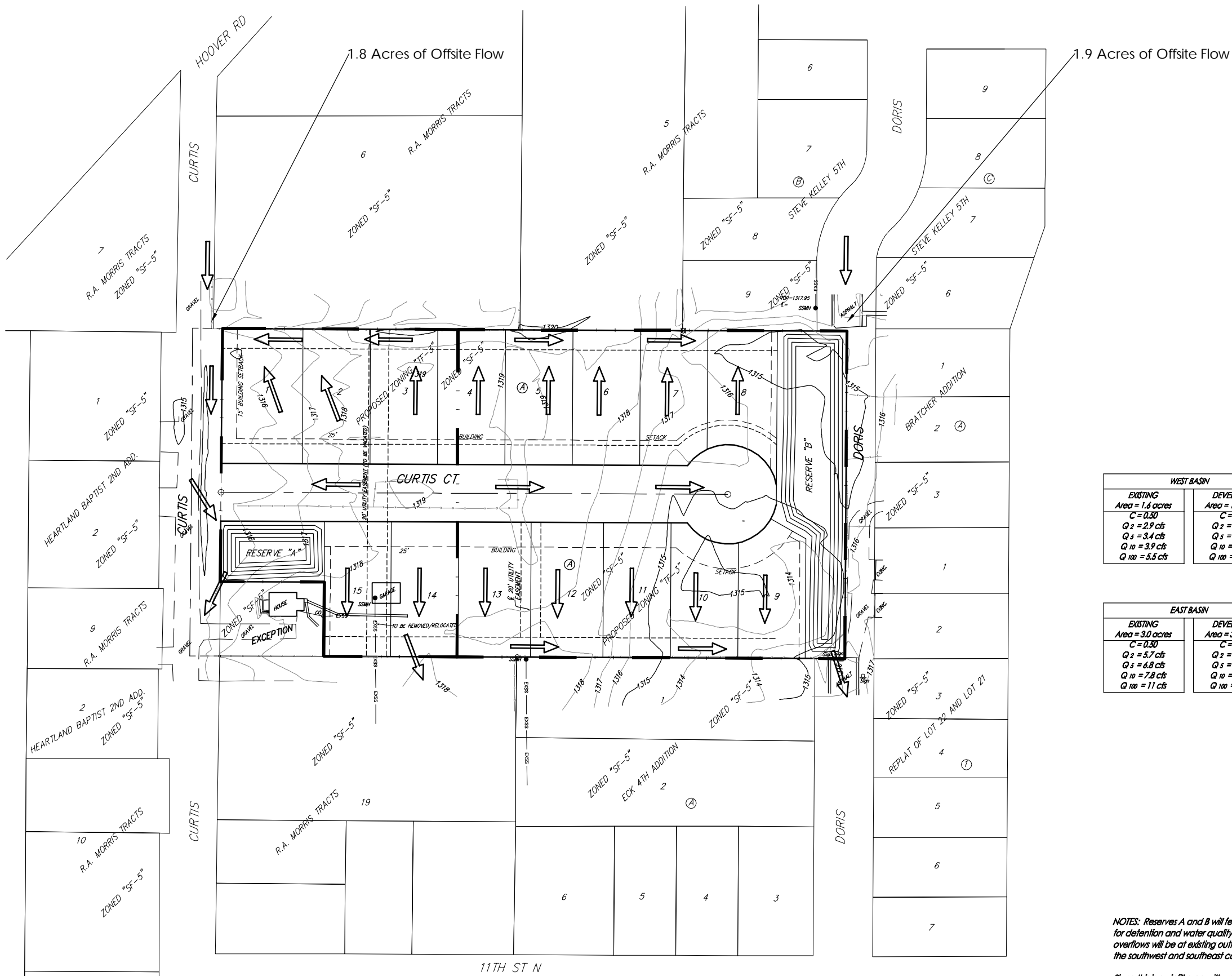


DRAINAGE CONCEPT

JABR ADDITION

WICHITA, SEDGWICK COUNTY, KANSAS



WEST BASIN	
EXISTING Area = 1.8 acres C = 0.30 Q ₂ = 2.9 cfs Q ₅ = 3.4 cfs Q ₁₀ = 3.9 cfs Q ₁₀₀ = 5.5 cfs	DEVELOPED Area = 1.8 acres C = 0.61 Q ₂ = 3.7 cfs Q ₅ = 4.5 cfs Q ₁₀ = 5.1 cfs Q ₁₀₀ = 7.2 cfs

EAST BASIN	
EXISTING Area = 3.0 acres C = 0.30 Q ₂ = 5.7 cfs Q ₅ = 6.8 cfs Q ₁₀ = 7.8 cfs Q ₁₀₀ = 11 cfs	DEVELOPED Area = 3.0 acres C = 0.61 Q ₂ = 7.0 cfs Q ₅ = 8.3 cfs Q ₁₀ = 9.6 cfs Q ₁₀₀ = 13 cfs

NOTES: Reserves A and B will feature infiltration basins for detention and water quality treatment. Emergency overflows will be at existing outflow locations located at the southwest and southeast corners of the property.

Since this is an infill area with very little grade change, some onsite developed runoff (rear yards) will leave the site undetained and untreated.

DRAINAGE CONCEPT JABR ADDITION

21 October 2014

Baughman Company, P.A.
315 Ellis St., Wichita, KS 67211 P 316-262-7271 F 316-262-0149
ENGINEERING | SURVEYING | PLANNING | LANDSCAPE ARCHITECTURE