

TRANSMITTAL

OCT 17, 2014



PROFESSIONAL ENGINEERING CONSULTANTS, P.A.

303 S. Topeka, Wichita, KS 67202

TO: Metropolitan Area Building &
Construction Department
Mike Gable
455 N. Main
Wichita, KS 67202-1600

DATE: 10/17/2014

PROJECT: 14611-002 - Glen Meadows 2nd
Plating Services - Leewood Homes

FROM: Charles S. Brown, P.E.

PURPOSE: For your use

SUBJECT: Lot 6, Block 1, Glen Meadows 2nd

DESCRIPTION OF CONTENTS

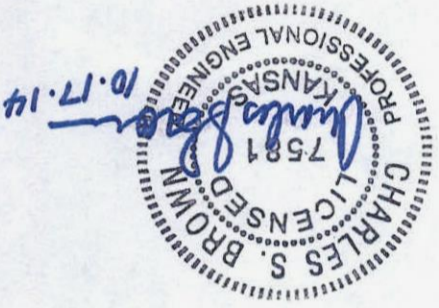
QTY	TITLE
1	Stamped Revised Grading Plans for Lot 6, Block 1, Glen Meadows 2nd

COPIES:

Loren Perry (Leewood Homes, Inc.)
~~Scott Lindbak~~ (Wichita, City of)
David Hambrick (Slawson Companies)



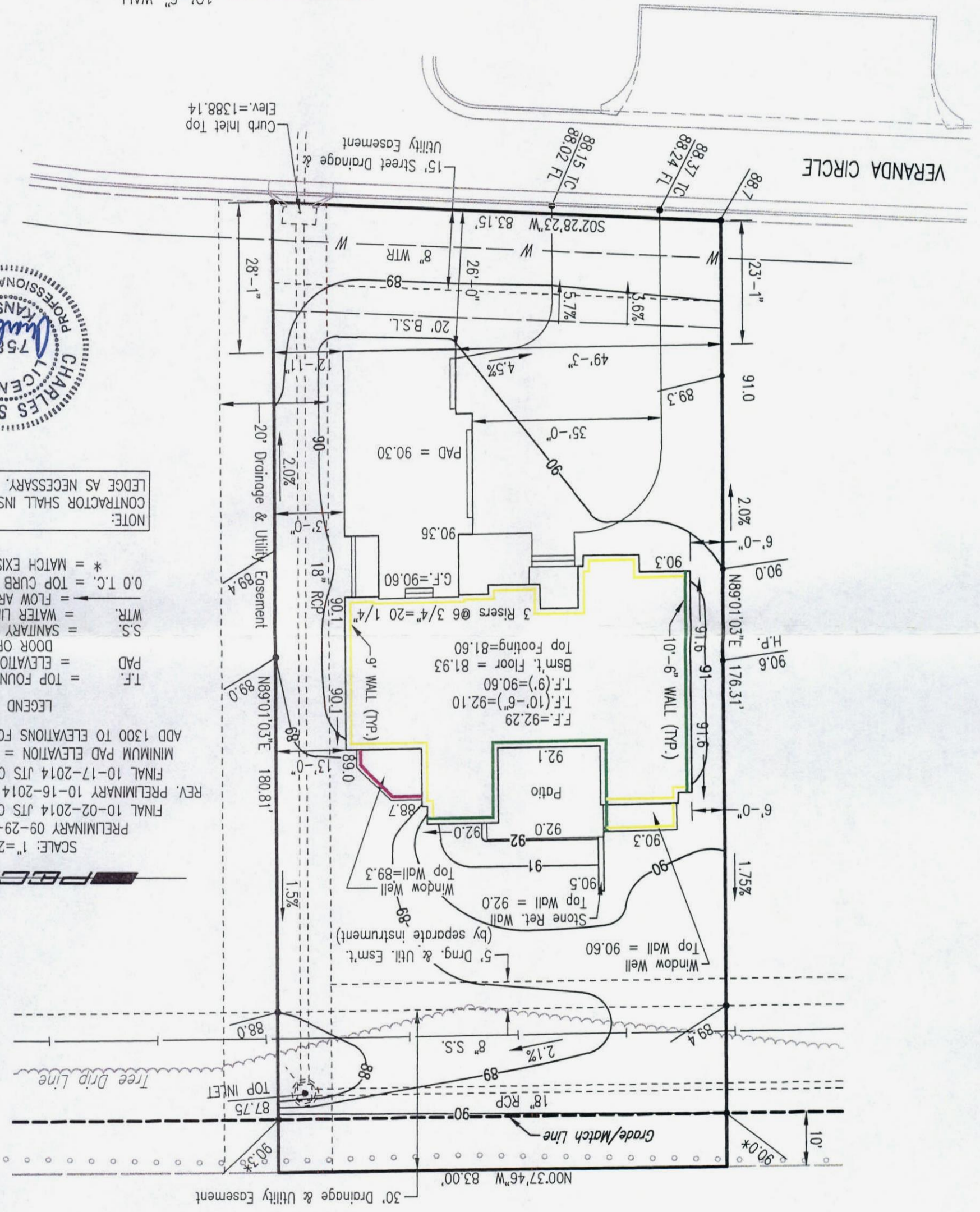
10'-6" WALL
9' WALL
7'-8" WALL (AT WINDOW WELL)



NOTE:
CONTRACTOR SHALL INSTALL BRICK
LEDGE AS NECESSARY.

LEGEND
T.F. = TOP FOUNDATION
PAD = ELEVATION AT GARAGE
DOOR OPENING
S.S. = SANITARY SEWER
WTR. = WATER LINE
= FLOW ARROW
0.0' T.C. = TOP CURB
* = MATCH EXISTING

SCALE: 1"=20'
PRELIMINARY 09-29-2014 JTS
FINAL 10-02-2014 JTS Checked by CSB
REV. PRELIMINARY 10-16-2014 JTS Checked by CSB
FINAL 10-17-2014 JTS Checked by CSB
MINIMUM PAD ELEVATION = 1392.50 NAVD88
ADD 1300 TO ELEVATIONS FOR NAVD88 DATUM.



LOT 6, BLOCK 1
GLEN MEADOWS 2ND ADDITION
2025 N. VERANDA CIR.
BUILDER: LEWOOD HOMES