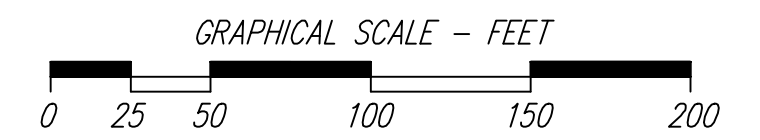


VICINITY MAP
N.T.S.



OWNER INFORMATION:

Sandland Iron and Metal
3059 N Hoover Road
Wichita, KS 67205

LEGEND:

- = Existing Contour (1-ft. Intervals)
- = Discharge locations
- = Flow directions
- = Property boundary
- = Drainage basin limits
- = Flow path

HORIZONTAL CONTROL DATA:

HCP NO. 2 - $\frac{5}{8}$ " Rebar (found), located at the Northeast Corner (NE Cor.) of the Southeast Quarter (SE $\frac{1}{4}$) of Section 34, Township 26 South, Range 1 West (the intersection of North Hoover Road and West 33rd Street North).
N=1706849.244, E=1628039.810.

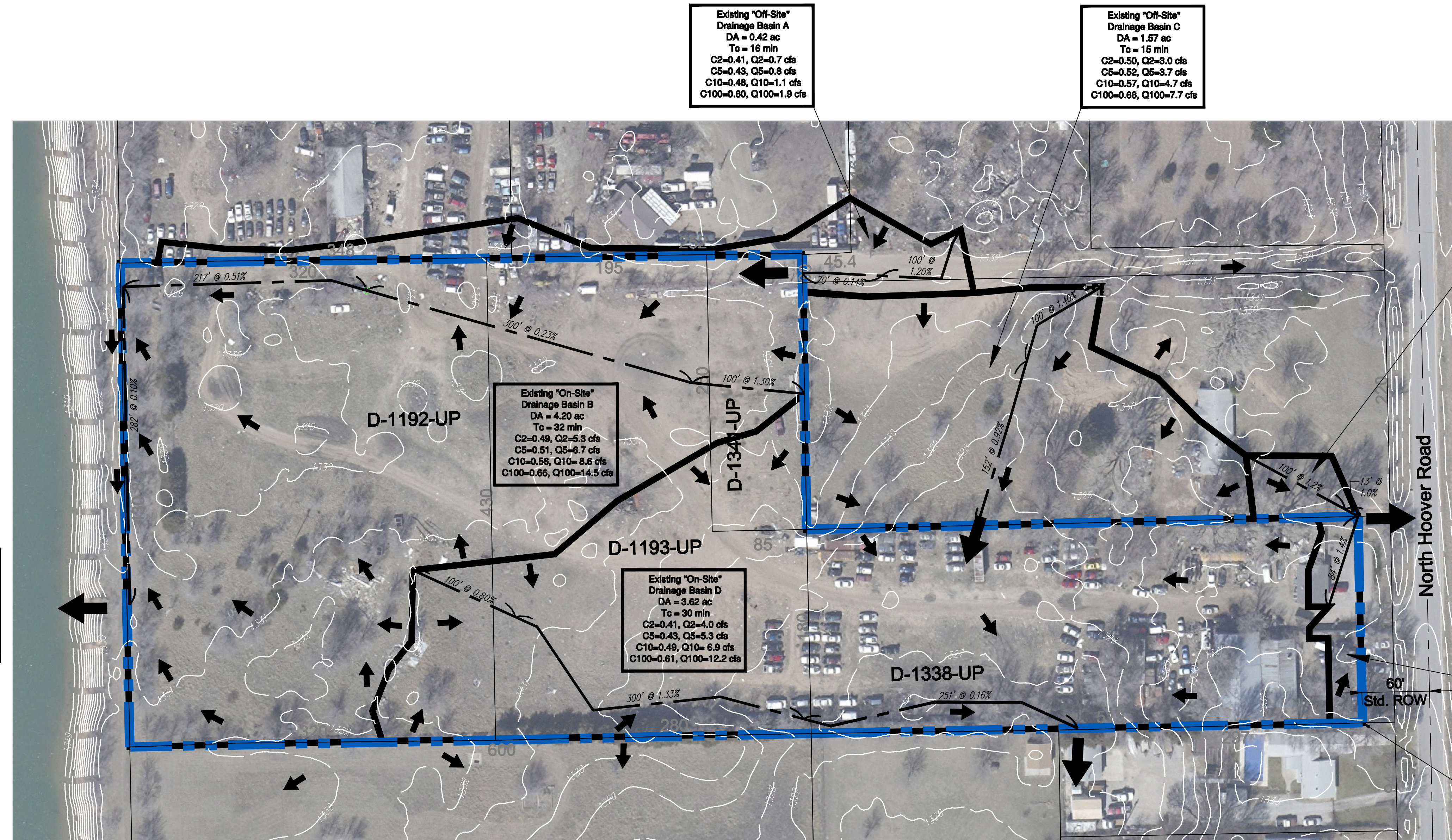
HCP NO. 3 - Plus cut in Concrete (found), $\pm 0.2'$ West of the Southeast Corner (SE Cor.) of the Southeast Quarter (SE $\frac{1}{4}$) of Section 34, Township 26 South, Range 1 West (the intersection of North Hoover Road and West 29th Street North).
N=1704210.793, E=1628039.810.

VERTICAL CONTROL DATA:

BM #1 - City of Wichita Benchmark, located at the Southwest corner of 37th Street and Hoover Road, approx. 16.4' West of Power Pole.
Elev=1334.19 NAVD 88

SITE NOTES:

1. The site consists of an existing use of wrecking and salvage.
2. The USDA web soil survey indicates the area mainly consists of Prot1 loamy fine sand in Hydrologic Soil Group (HSG) "A". However, the northwest area of site consists of tabler silty clay loam in HSG "D".
3. The site contains no floodplains per FEMA Flood Insurance Rate Map (FIRM) 2017300335E, February 2, 2007.
4. Land types based on 2011 Sedgwick County Aerial photo.
5. Contours based on 2009 Sedgwick County Lidar.
6. Property lot lines based on Sedgwick County Clerk Quarter-Section Map for N.E. 1/4, Sec. 34, T26S, R1W.
7. The site receives off-site runoff from northern undeveloped land.



**Existing Discharge
Drainage Basins A&B**
DA = 4.62 ac
Tc = 42 min
C2=0.48, Q2=4.9 cfs
C5=0.51, Q5=6.3 cfs
C10=0.56, Q10=8.1 cfs
C100=0.66, Q100=13.8 cfs

**Existing "Off-Site"
Drainage Basin A**
DA = 0.42 ac
Tc = 16 min
C2=0.41, Q2=0.7 cfs
C5=0.43, Q5=0.8 cfs
C10=0.48, Q10=1.1 cfs
C100=0.60, Q100=1.9 cfs

**Existing "Off-Site"
Drainage Basin C**
DA = 1.57 ac
Tc = 15 min
C2=0.50, Q2=3.0 cfs
C5=0.52, Q5=3.7 cfs
C10=0.57, Q10=4.7 cfs
C100=0.66, Q100=7.7 cfs

**Existing "Off-Site"
Drainage Basin E**
DA = 0.11 ac
Tc = 15 min
C2=0.42, Q2=0.2 cfs
C5=0.44, Q5=0.2 cfs
C10=0.50, Q10=0.3 cfs
C100=0.61, Q100=0.5 cfs

**Existing "On-Site"
Drainage Basin B**
DA = 4.20 ac
Tc = 32 min
C2=0.49, Q2=5.3 cfs
C5=0.51, Q5=6.7 cfs
C10=0.56, Q10=8.6 cfs
C100=0.66, Q100=14.5 cfs

**Existing "On-Site"
Drainage Basin D**
DA = 3.62 ac
Tc = 30 min
C2=0.41, Q2=4.0 cfs
C5=0.43, Q5=5.3 cfs
C10=0.48, Q10=6.9 cfs
C100=0.61, Q100=12.2 cfs

**Existing Discharge
Drainage Basins E & F**
DA = 0.26 ac
Tc = 15 min
C2=0.67, Q2=0.7 cfs
C5=0.69, Q5=0.8 cfs
C10=0.73, Q10=1.0 cfs
C100=0.79, Q100=1.5 cfs

**Existing "On-Site"
Drainage Basin F**
DA = 0.15 ac
Tc = 15 min
C2=0.86, Q2=0.5 cfs
C5=0.87, Q5=0.6 cfs
C10=0.90, Q10=0.7 cfs
C100=0.93, Q100=1.0 cfs

**Existing Discharge
Drainage Basins C & D**
DA = 419 ac
Tc = 29 min
C2=0.44, Q2=6.2 cfs
C5=0.46, Q5=7.9 cfs
C10=0.51, Q10=10.2 cfs
C100=0.62, Q100=17.7 cfs

Proposed Platted Area, 7.97 Acres
LC (Limited Commercial) Zoning and,
SF-5 Single-Family Residential) Zoning
Conditional Use Permit for vehicle
wrecking/salvage yard

YOUNG & ASSOCIATES, P.A.
Professional Civil Engineering Consultants
100 S. Georige, Derby, KS 67037
tel: (316)788-2552 fax: (316)788-4408 email: engineering@yngpa.com
Copyright 2009, by Young & Associates, P.A., all rights reserved. Prepared in the United States of America. This document, or parts thereof, or design concepts contained herein, are deemed confidential and proprietary information of Young & Associates, P.A. and may be used for any other project without the written consent of Young & Associates, P.A. The delivery of this original or copies thereof does not constitute publication thereof.

EXISTING DRAINAGE CONDITIONS
JR Sandilion Property
Unplatted tracts, D-1338-UP / D-1341-UP / D-1192-UP
Sedgwick County, Kansas

scale: as noted
Design By: TWE
Drawn By: DSB
Checked By: CRY
P/N: 14-363
Prints Issued:
Final Dwg, 11-24-14

Revisions: