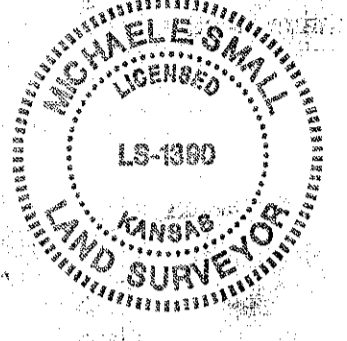


CERTIFICATE OF SURVEY

I, Michael E. Small, a registered land surveyor in Kansas, do hereby certify that I have been in responsible charge of surveying and platting of "BERKELEY SQUARE THIRD ADDITION" an addition to Wichita, Sedgwick County, Kansas, into Lots, a Block, and a Reserve, the same being accurately set forth in the accompanying plat and described herein:
A replat of Lots 1 and 2, Block 1, and Lot 1, Block 2, Berkeley Square Second Addition, an addition to Wichita, Sedgwick County, Kansas, TOGETHER WITH, Lot 1, Block 1, Reserves A and B, and all of Berkeley Square Parkway, Berkeley Square First Addition, an addition to Wichita, Sedgwick County, Kansas.

CONTAINING: 675,612 square feet or 15.51 acres of land, more or less.
All streets, easements, rights-of-way, building setbacks, access controls, together with a utility easement recorded in/on Doc./Flm-Pg: 29225434, together with that part of a water line easement recorded in/on Doc./Flm-Pg: 29225433, together with all other public dedications within the above described property are hereby vacated and replatted by virtue of K.S.A. 12-512b, as amended.

I hereby certify that the details of this plat are correct to the best of my knowledge and belief this ___ day of ___, 2014.



Michael E. Small, LS #1390
MKEC Engineering, Inc.
411 North Webb Road
Wichita, Kansas 67206

OWNER'S CERTIFICATE

Know all men by these presents that we the undersigned property owners of the land above set forth in the Registered Land Surveyor's Certificate, have caused the same to be surveyed and platted into Lots, a Block, and a Reserve, the same to be known as "BERKELEY SQUARE THIRD ADDITION," an addition to Wichita, Sedgwick County, Kansas.

Easements for construction and maintenance of public utilities and drainage, as indicated hereon, are hereby granted to and for the use of the public. The street, lighting, landscape, drainage and utility easement, as indicated hereon, is for the use of street, lighting, landscape, drainage and utility purposes and is granted to and for the use of the public for the purposes of accessing, constructing, maintaining, and repairing facilities over, along, and under the lots thereto. The municipal water easements, as indicated hereon, are for the exclusive use of municipal water distribution facilities and are granted to and for the use of the public for the purposes of accessing, constructing, maintaining and repairing their facilities over, along, and under the lots thereto.

All abutters rights of access to or from 13th Street over and across the south line of "BERKELEY SQUARE THIRD ADDITION," are hereby granted to the appropriate governing body, provided however three full movement openings as indicated hereon. All abutters rights of access to or from Greenwich Road over and across the east line of "BERKELEY SQUARE THIRD ADDITION," are hereby granted to the appropriate governing body, provided however one full movement openings as indicated hereon.

Reserve "A" is platted for landscaping, irrigation, berming, monuments, signs, and utilities confined by easement(s) or rights-of-way. The Reserve shall be owned and maintained by the owner(s) of Lots 1, 2, and 3, Block 1, and/or their successors, assigns, and/or a Lot Owner's Association

A drainage plan has been developed for this plat. All drainage easements, rights-of-ways, or reserves shall remain at established grades or as modified with the approval of the applicable City or County Engineer, and unobstructed to allow for the conveyance of stormwater. Lots 1, 2, and 6, Block 1, are required to adhere to the minimum pad elevation table elevations shown hereon.

as to Lots 2 and 3, Block 1, and Reserve A
APEX REALTY, LLC,
a Kansas limited liability company

as to Lot 1, Block 1
NEXUS PROPERTIES, LLC,
a Kansas limited liability company

Steven A. Hatchett, manager
Steven A. Hatchett, manager

STATE OF KANSAS, SEDGWICK COUNTY) ss:
This instrument was acknowledged before me on ___ day of ___, 2014,
by Steven A. Hatchett, manager of both, Apex Realty, LLC, a Kansas limited liability company and
Nexus Properties, LLC, a Kansas limited liability company.

IN WITNESS WHEREOF, I have hereunto set my hand and affixed my official seal, the day and
year last above written.

Notary Public: _____
My Term Expires: _____

as to Lots 4, 5, and 6, Block 1

Thomas R. Devlin, Jr.
STATE OF KANSAS, SEDGWICK COUNTY) ss:
This instrument was acknowledged before me on ___ day of ___, 2014,
by Thomas R. Devlin, Jr.,

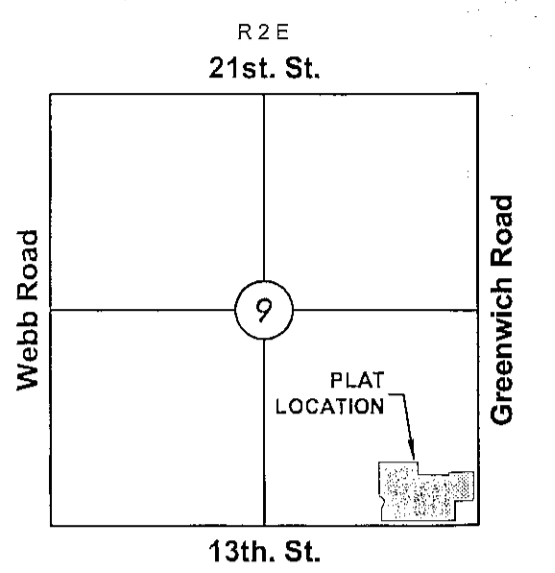
IN WITNESS WHEREOF, I have hereunto set my hand and affixed my official seal, the day and
year last above written.

Notary Public: _____
My Term Expires: _____

FINAL PLAT
BERKELEY SQUARE THIRD ADDITION
AN ADDITION TO WICHITA, SEDGWICK COUNTY, KANSAS

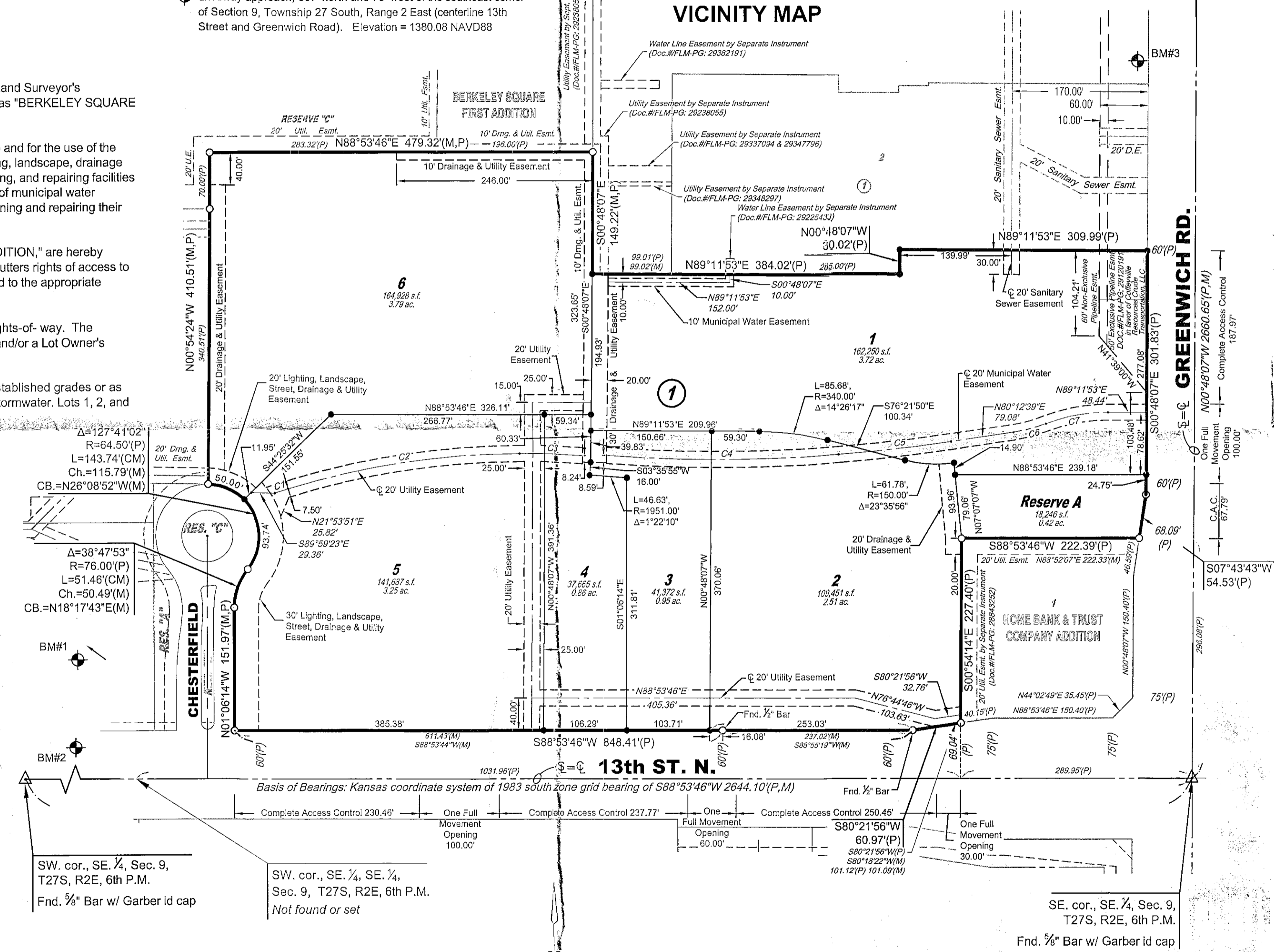
BENCHMARKS

- BM#1 Chiseled square on top of curb at north end of 2nd island, north of 13th St. N. on Veranda, 461 feet north of 13th Street and centerline Veranda. Elevation = 1287.03 NAVD88
- BM#2 Railroad spike in north side of power pole, 164.8 feet west of centerline Chesterfield Street and 39' north of centerline 13th Street. Elevation = 1399.01 NAVD88
- BM#3 Chiseled Square on top of curve at west end of north radius of driveway approach, 887' north and 73' west of the southeast corner of Section 9, Township 27 South, Range 2 East (centerline 13th Street and Greenwich Road). Elevation = 1380.08 NAVD88



MINIMUM PAD ELEVATIONS
LOWEST OPENINGS

LOT	BLOCK	ELEVATION NAVD88
1 & 2	1	1387.3
6	1	1389.9

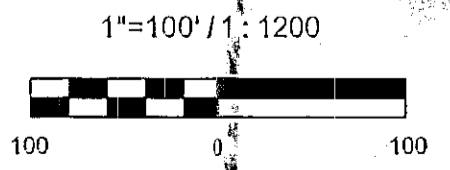


SW. cor., SE. 1/4, Sec. 9, T27S, R2E, 6th P.M.
Fnd. 3/8" Bar w/ Garber id cap

SW. cor., SE. 1/4, SE. 1/4, Sec. 9, T27S, R2E, 6th P.M.
Not found or set

LEGEND

- Date of Survey: May 29, 2014
- △ = Section corner monument found
- = Found 3/8" rebar w/ MKEC CLS 39 id. cap unless otherwise annotated
- = Set 3/8" rebar w/ MKEC CLS 39 id. cap
- ◆ = Benchmark
- (M) = Measured
- (CM) = Calculated from measured
- (P) = Platted
- C.A.C. = Complete Access Control



Basis of Bearings: Kansas coordinate system of 1983 south zone bearing of S88°53'46"W 2644.10'(P,M)

This plat is surveyed and platted on NAD83 using Kansas state plane south zone coordinates, modified to the surface, having a combined adjustment scale factor of 1.000120014401728

EASEMENT CURVE TABLE

Curve #	Length	Radius	Delta	Chord Direction	Chord Length
C1	17.41'	1023.50'	0°58'29"	N71°35'25"E	17.41'
C2	293.03'	1023.50'	16°24'15"	S80°16'47"W	292.03'
C3	80.80'	1023.50'	4°31'24"	S89°15'24"E	80.78'
C4	294.10'	1925.00'	8°45'13"	N88°47'49"E	293.82'
C5	141.43'	1925.00'	4°12'34"	N82°18'56"E	141.39'
C6	42.18'	190.00'	12°43'13"	N73°51'02"E	42.10'
C7	79.56'	210.00'	21°42'27"	N78°20'39"E	78.09'

PLANNING COMMISSION CERTIFICATE

STATE OF KANSAS, SEDGWICK COUNTY) ss:
This plat of "BERKELEY SQUARE THIRD ADDITION" has been submitted to and approved by the Wichita-Sedgwick County Metropolitan Area Planning Commission, Wichita, Kansas.
Dated this ___ day of ___, 2014.
WICHITA-SEDGWICK COUNTY METROPOLITAN AREA PLANNING COMMISSION

_____, Chair
Don Klausmeyer, Chair

Attest: _____ Secretary
John L. Schlegel, Secretary

GOVERNING BODY CERTIFICATE

STATE OF KANSAS, SEDGWICK COUNTY) ss:
The dedications shown on this plat are hereby accepted and this plat is hereby approved by the governing body of the City of Wichita, Kansas.

Dated this ___ day of ___, 2014.

At the direction of the City Council.

_____, Mayor
Carl Brewer, Mayor

Attest: _____ City Clerk
Karen Sublett, City Clerk

TRANSFER RECORD

STATE OF KANSAS, SEDGWICK COUNTY) ss:
Entered on transfer record this ___ day of ___, 2014.

_____, County Clerk
Kelly B. Arnold, County Clerk

REGISTER OF DEEDS' CERTIFICATE

STATE OF KANSAS, SEDGWICK COUNTY) ss:
This is to certify that this instrument was filed for record in the Register of Deeds office this day of ___, 2014, at ___ o'clock ___ M., and is duly recorded.

_____, Register of Deeds
Bill Meek, Register of Deeds

Attest: _____ Deputy
Tonya E. Buckingham, Deputy

COUNTY SURVEYOR

STATE OF KANSAS, SEDGWICK COUNTY) ss:
Reviewed in accordance with K.S.A. 58-2005 on this ___ day of ___, 2014.

_____, Deputy County Surveyor
Tricia L. Robello, LS #1246
Deputy County Surveyor
Sedgwick County, Kansas



Berkeley Square Third Addition

\\p0100551\p0100551_Berkeley Square Second-5-Chief\CAD\Plat\14052314_16:02:37_Plat_CST