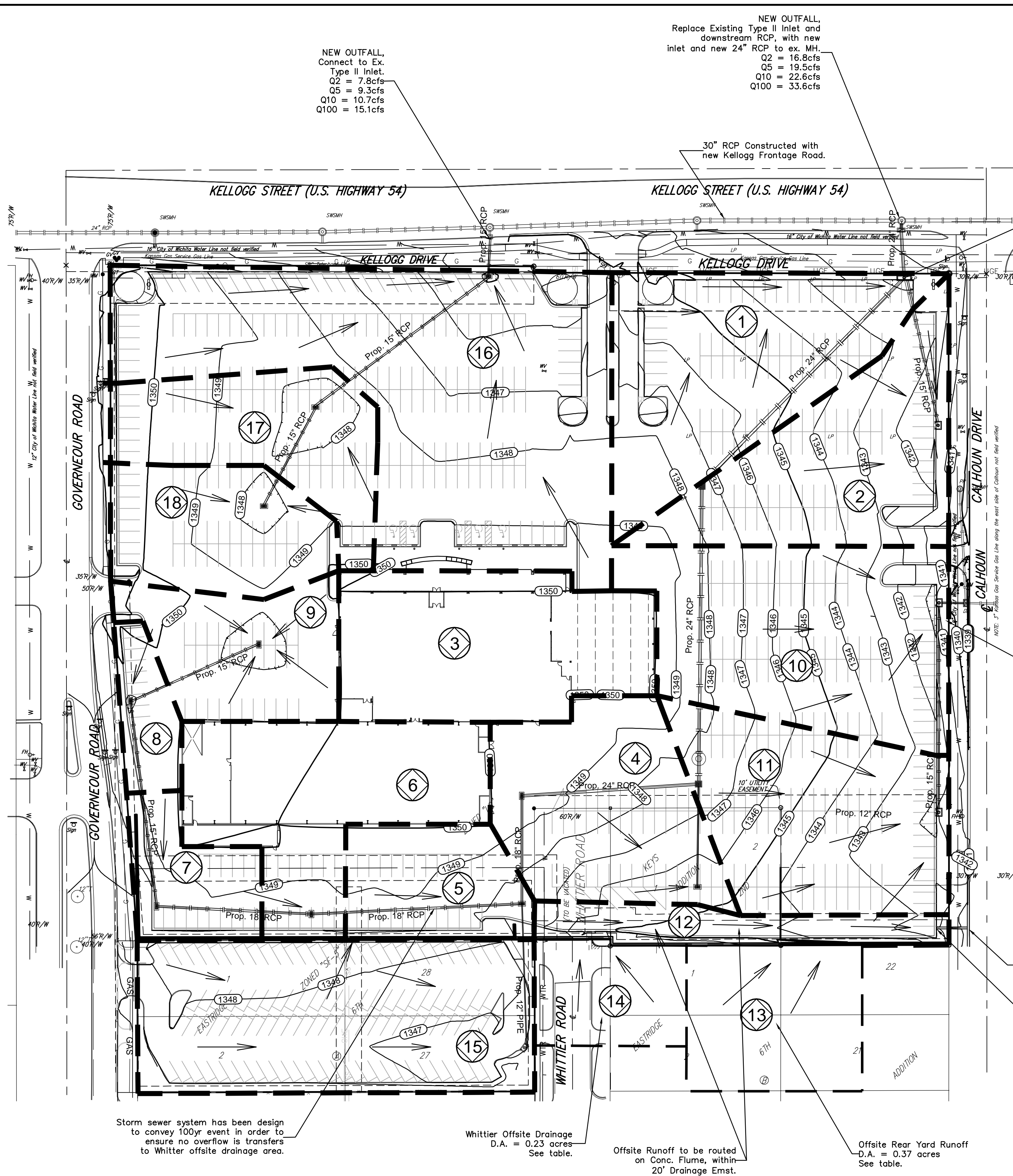
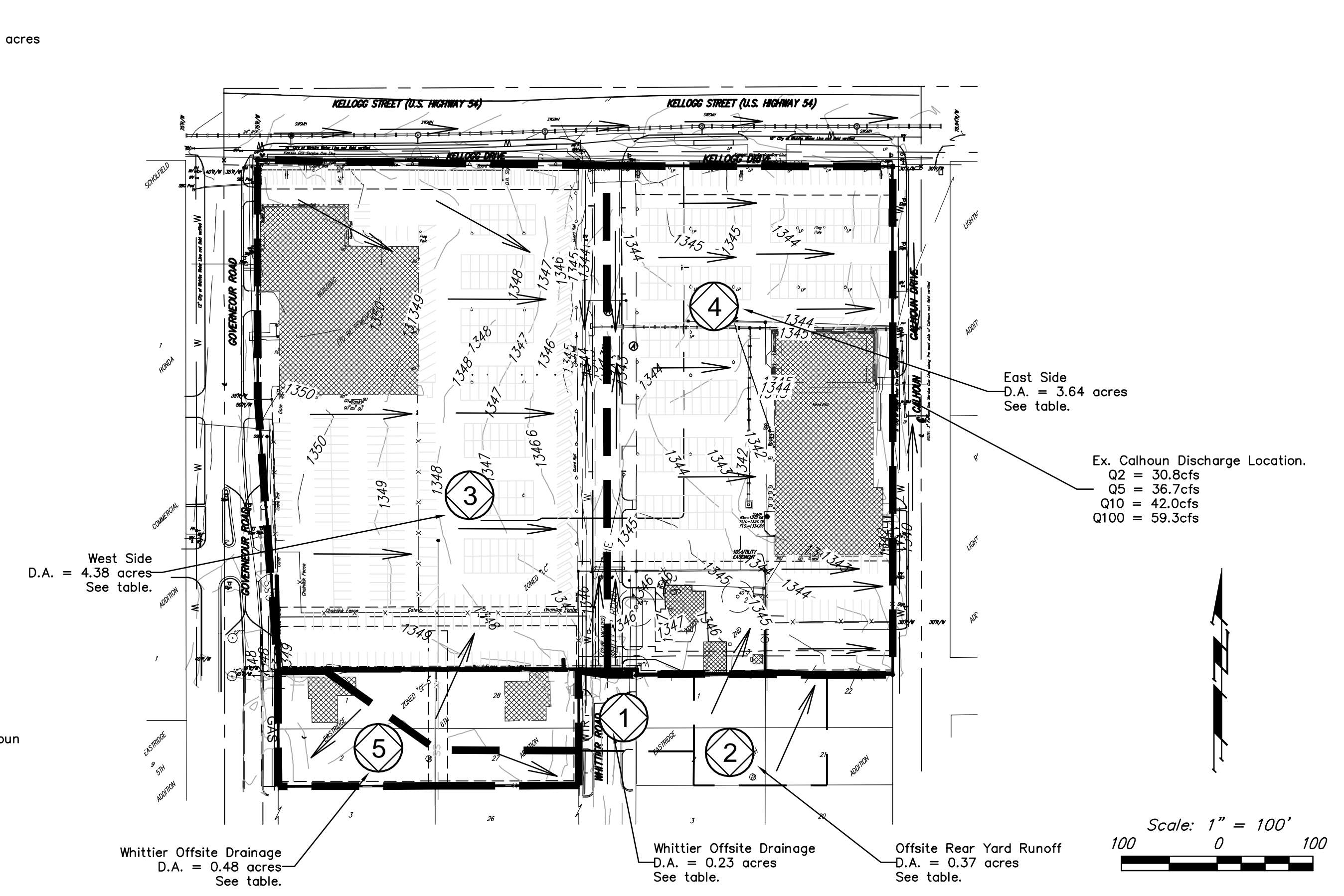
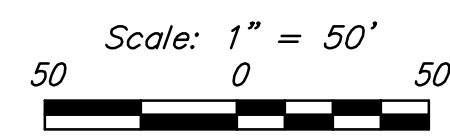


DRAINAGE PLAN

MIKE STEVEN MOTORS SECOND ADD. WICHITA SEDGWICK COUNTY, KANSAS



Proposed Conditions



Existing Conditions

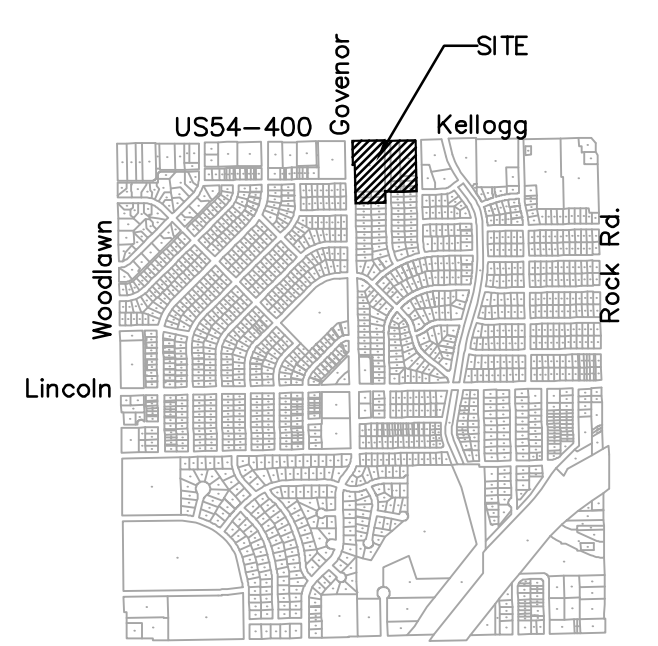
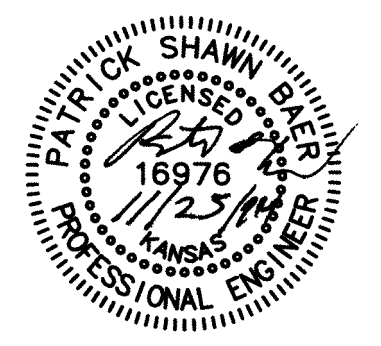
Existing Conditions								
Basin #	Area (sq. ft.)	Area (acres)	Runoff Coef. #	Tc (min)	Q2 (cfs)	Q5 (cfs)	Q10 (cfs)	Q100 (cfs)
1 (Whittier Offsite)	2,840	0.23	0.91	15.0	0.67	0.78	0.90	1.27
2 (East Backyard Offsite)	16,112	0.37	0.76	15.0	1.09	1.28	1.47	2.07
3 (West of Whittier)	207,733	4.77	0.90	15.0	16.44	19.57	22.40	31.63
4 (East of Whittier)	158,498	3.64	0.91	15.0	12.68	15.10	17.28	24.40
5 (Drains to the South)	20,830	0.48	0.76	15.0	1.39	1.66	1.90	2.67
Existing Site Peak Discharge in Calhoun (omit Area 5) =					30.8	36.7	42.0	59.3

Proposed Conditions								
Basin #	Area (sq. ft.)	Area (acres)	Runoff Coef. #	Tc (min)	Q2 (cfs)	Q5 (cfs)	Q10 (cfs)	Q100 (cfs)
1	31,582	0.73	0.91	15.0	2.53	3.01	3.44	4.86
2	25,977	0.60	0.91	15.0	2.08	2.47	2.83	4.00
3	27,591	0.63	0.91	15.0	2.21	2.63	3.01	4.25
4	24,412	0.56	0.91	15.0	1.95	2.33	2.66	3.76
5	12,607	0.29	0.91	15.0	1.01	1.20	1.37	1.94
6	26,982	0.62	0.91	15.0	2.16	2.57	2.94	4.15
7	9,354	0.21	0.91	15.0	0.75	0.89	1.02	1.44
8	5,375	0.12	0.91	15.0	0.43	0.51	0.59	0.83
9	15,689	0.36	0.91	15.0	1.26	1.49	1.71	2.42
10*	34,292	0.79	0.91	15.0	2.74	3.27	3.74	5.28
11*	28,655	0.66	0.91	15.0	2.29	2.73	3.12	4.41
12*	9,045	0.21	0.91	15.0	0.72	0.86	0.99	1.39
13*	26,763	0.61	0.76	15.0	1.79	2.13	2.44	3.44
14*	9,840	0.23	0.76	15.0	0.67	0.78	0.90	1.27
15	37,940	0.87	0.91	15.0	3.04	3.61	4.14	5.84
16	63,035	1.45	0.91	15.0	5.04	6.00	6.87	9.71
17	18,457	0.42	0.91	15.0	1.48	1.76	2.01	2.84
18	16,261	0.37	0.91	15.0	1.30	1.55	1.77	2.50
Proposed Peak Discharge into Kellogg =					25.2	30.0	34.3	48.5
Proposed Peak Discharge into Calhoun = *					8.2	9.8	11.2	15.8

Downstream Channel Protection:
Downstream Channel Protection is not required for this addition because the approved site improvements, currently under construction, will decrease the net impervious area and in turn decrease the discharge storm water volumes for the site.

Storm Water Quality Treatment:
A Private Project Drainage Plan (0001PPD60753) has been approved for the site improvements, currently under construction. A Water Quality unit has been constructed to meet the Water Quality Requirements for this site.

FEMA Notes:
No FEMA SFHA exists on this property as of October 31, 2007, per FEMA FIRM Panel 367 of 700, Sedgwick County, Kansas; effective February 2, 2007.



Initial Submittal: 9/10/2010
Revised: 10/07/2011
Final Plan: 11/25/2014

