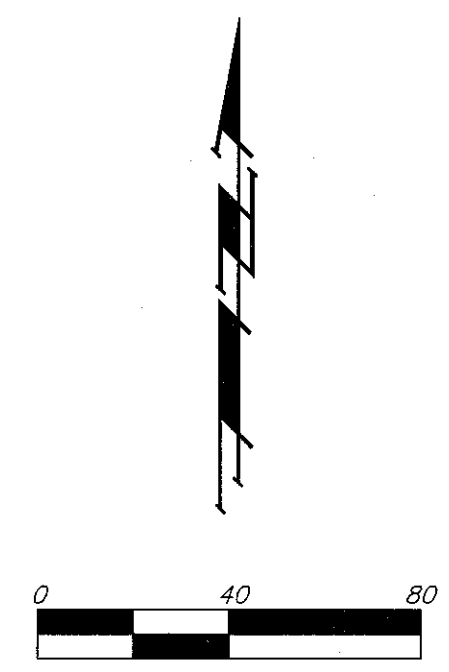
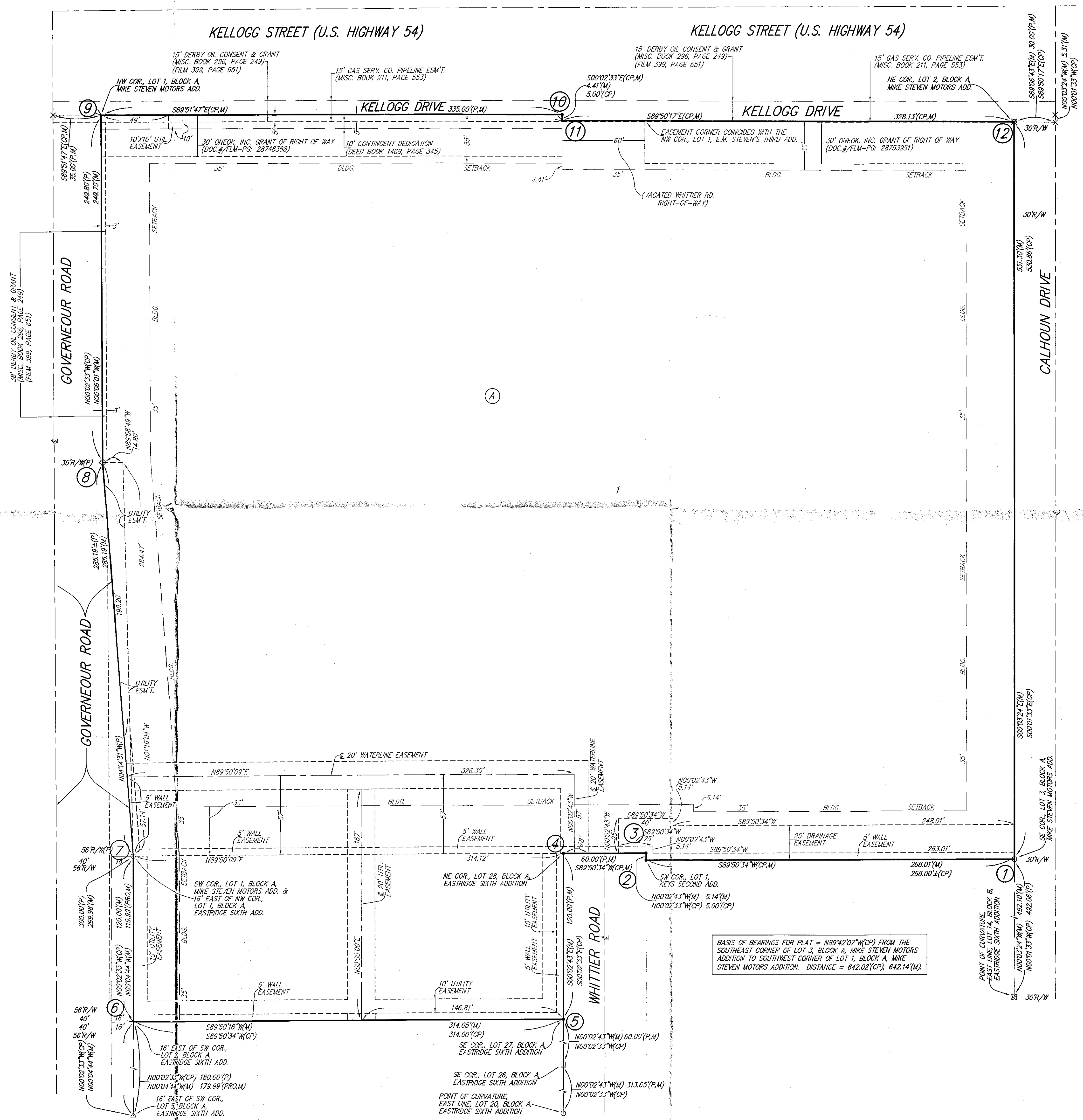


MIKE STEVEN MOTORS 2ND ADDITION

WICHITA, SEDGWICK COUNTY, KANSAS



NOTE:
ADDITIONAL BUILDING SETBACKS AND OTHER REQUIREMENTS PER MIKE STEVEN MOTORS COMMUNITY UNIT PLAN, (CP-308).

- = #4 REBAR W/ "BAUGHMAN" CAP (SET)
- ∩ = "V" NOTCH (SET)
- ◇ = CROSS CUT (SET)
- = 1/2" IRON (FOUND)(ORIGIN UNKNOWN)
- = #4 REBAR W/ "BAUGHMAN" CAP (FOUND)
- ⊠ = 1" IRON PIPE (FOUND)(ORIGIN UNKNOWN)
- △ = #4 REBAR W/ "SAVIO" CAP (FOUND)
- × = CROSS CUT (FOUND)(ORIGIN UNKNOWN)
- ⊠ = 1/2" FINCHED IRON PIPE (FOUND)(ORIGIN UNKNOWN)

(M) = MEASURED
(P) = PLATTED
(PRO) = PRORATED
(CP) = CALCULATED PER PLATTED INFO.

BASIS OF BEARINGS FOR PLAT = N89°42'07"W(CP) FROM THE SOUTHEAST CORNER OF LOT 3, BLOCK A, MIKE STEVEN MOTORS ADDITION TO SOUTHWEST CORNER OF LOT 1, BLOCK A, MIKE STEVEN MOTORS ADDITION. DISTANCE = 642.02(CP), 642.14(M).

NOTE:
A drainage plan has been developed for the plot and all drainage easements, rights-of-way, or reserves shall remain at established grades or as modified with the approval of the applicable City or County Engineer and unobstructed to allow for the conveyance of stormwater.