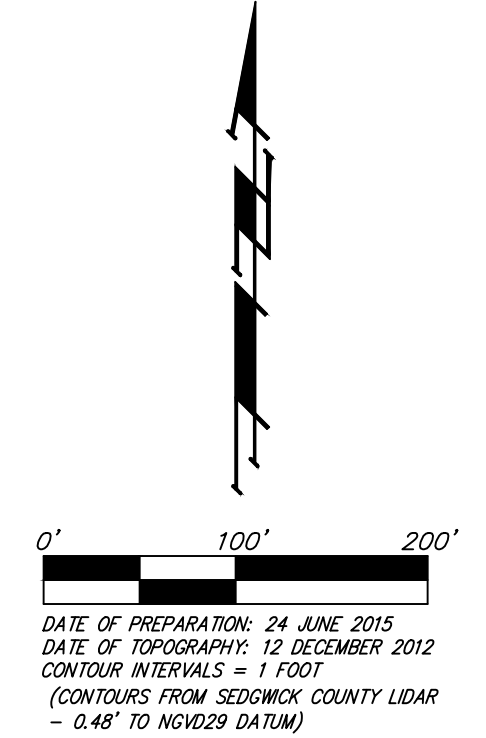


UTILITY PLAN

EDGE WATER 2ND ADDITION WICHITA, SEDGWICK COUNTY, KANSAS

NOTES:

- 1) At time of engineering Edgewater Addition Phase 1, it was planned to extend 10" sewer at 0.2% and 8" sewer at 0.3% to serve the southern and eastern portions of this subdivision. This allowed for a reduced amount of sewer pipe and services to be in groundwater.
- 2) At time of engineering proposed Edge Water 2nd Addition, a more detailed analysis of sewer depths, sizes, routing, and slopes will need to be performed to re-evaluate the ability to achieve basement service for the lots within this plat.
- 3) Extension of 10" along east line of plat may provide gravity sewer for a portion of Kingsbury Park.



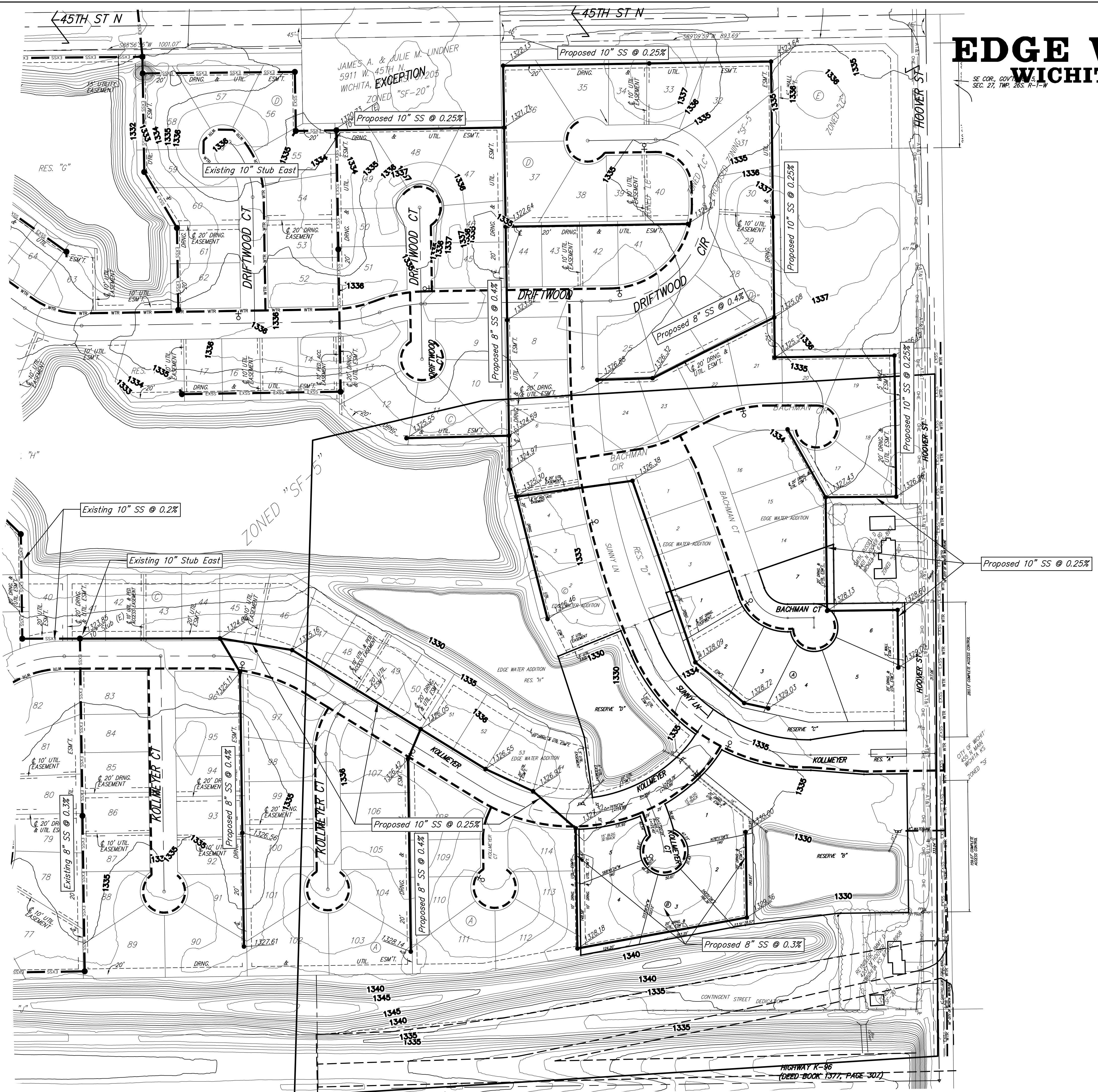
LEGEND

- Proposed Water Line (8" Unless Noted Otherwise)
- Existing Water Line (8" Unless Noted Otherwise)
- Proposed Sanitary Sewer Line (8" Unless Noted Otherwise)
- Existing Sanitary Sewer Line (8" Unless Noted Otherwise)
- Proposed Sanitary Sewer Manhole
- Proposed Fire Hydrant
- Proposed Sanitary Sewer Flow



VICINITY MAP
SEC. 27, T26S, R11W

PP = Power Pole
 ATT Ped = ATT Pedestal
 Guy = Guy Anchor
 Sign = Sign



EDGE WATER 2ND ADDITION

Baughman Company, P.A.
 315 Ellis St. Wichita, KS 67211 P 316-262-7271 F 316-262-0149
 ENGINEERING | SURVEYING | PLANNING | LANDSCAPE ARCHITECTURE