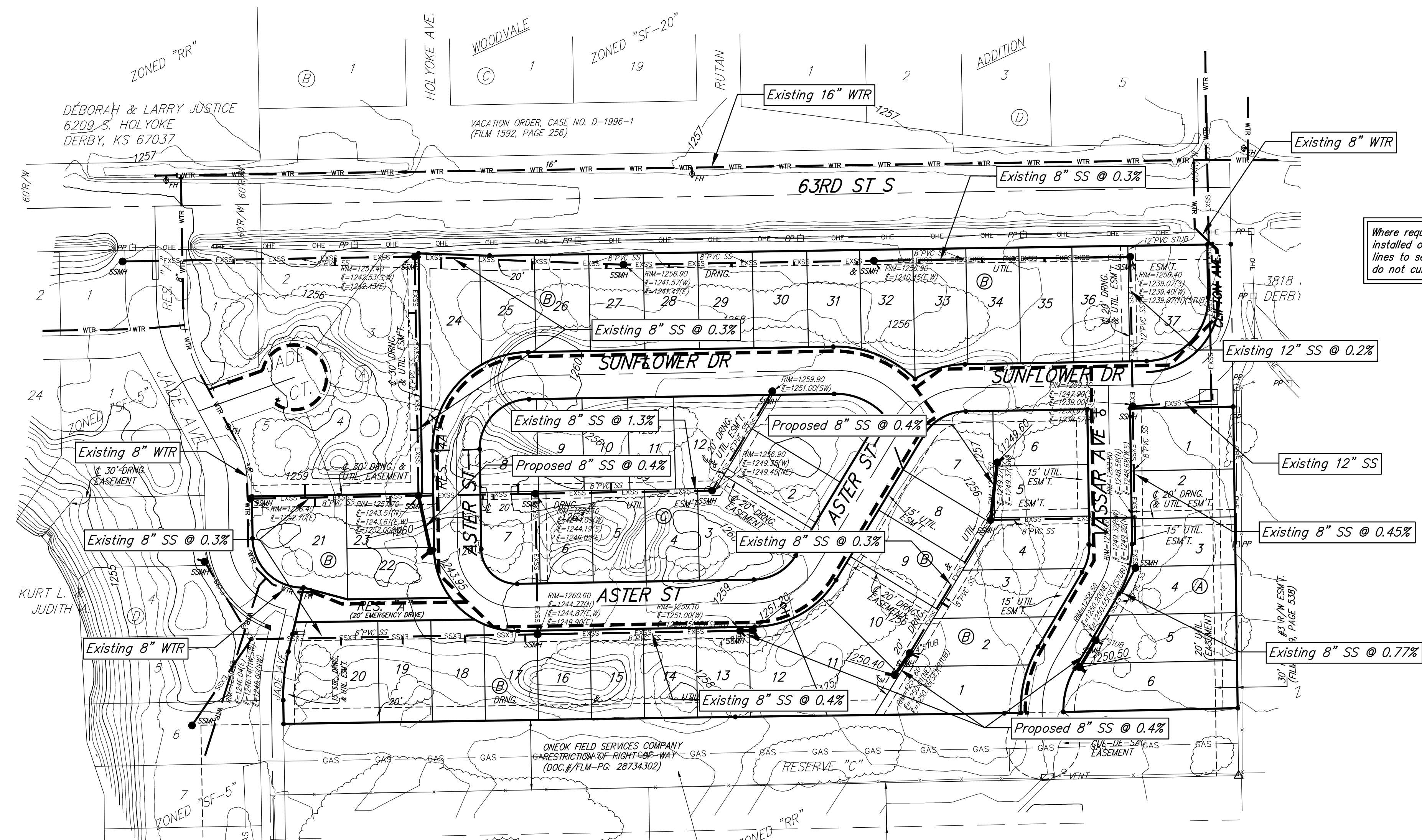
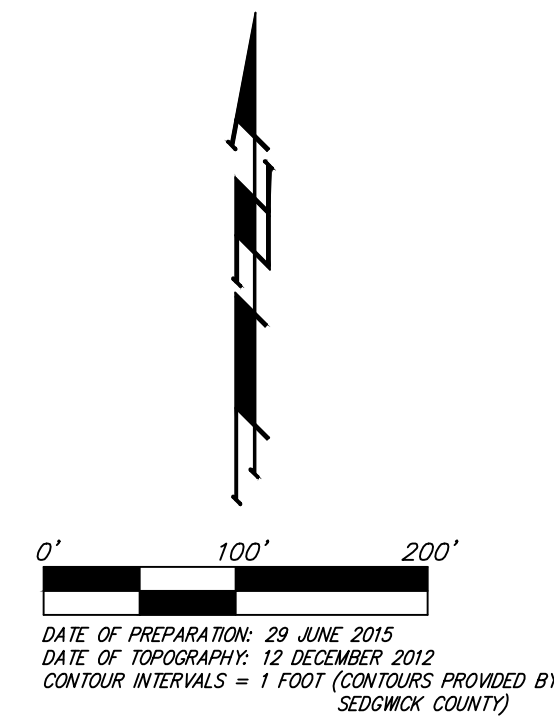


UTILITY PLAN
VASSAR ADDITION
WICHITA, SEDGWICK COUNTY, KANSAS



Where required, risers will be installed on the existing sewer lines to serve lots where risers do not currently exist.

LEGEND

	Proposed Water Line (8" Unless Noted Otherwise)
	Existing Water Line (8" Unless Noted Otherwise)
	Proposed Sanitary Sewer Line (8" Unless Noted Otherwise)
	Existing Sanitary Sewer Line (8" Unless Noted Otherwise)
	Proposed Sanitary Sewer Manhole
	Proposed Fire Hydrant
	Proposed Sanitary Sewer Flow



VICINITY MAP
 SEC. 27, T28S, R1E SEC. 26, T28S, R1E
 SEC. 34, T28S, R1E SEC. 35, T28S, R1E

□ PP = Power Pole
 □ ATT Ped = ATT Pedestal
 — Guy = Guy Anchor
 Ⓢ Sign = Sign

VASSAR ADDITION

July 2015

Baughman Company, P.A.
 315 Ellis St. Wichita, KS 67211 P 316-262-7271 F 316-262-0149
 ENGINEERING | SURVEYING | PLANNING | LANDSCAPE ARCHITECTURE