

# UTILITY PLAN

## FALCON FALLS 6TH ADDITION

### WICHITA, SEDGWICK COUNTY, KANSAS



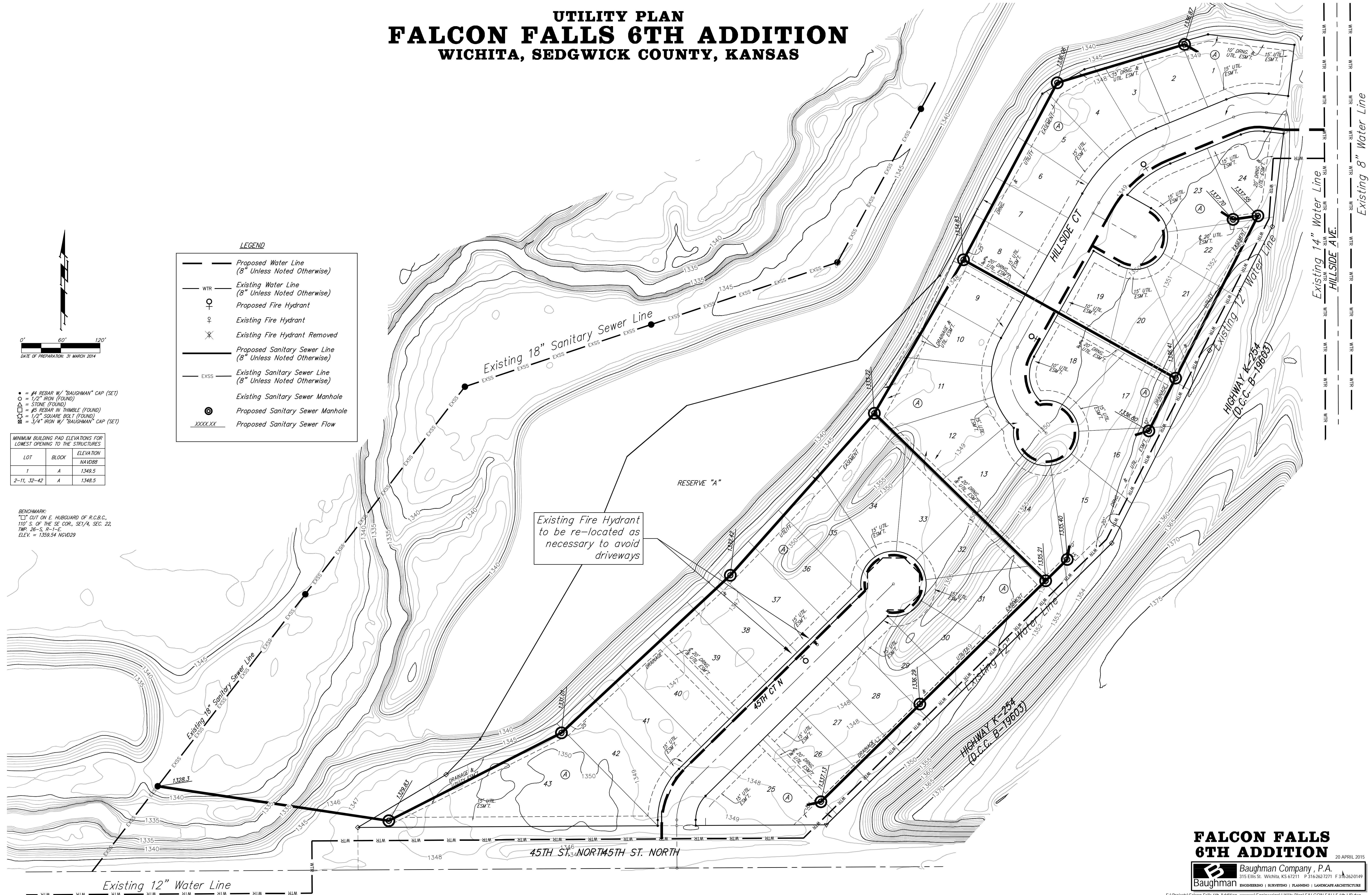
DATE OF PREPARATION: 31 MARCH 2014

LOT	BLOCK	ELEVATION NAVD88
1	A	1349.5
2-11, 32-42	A	1348.5

BENCHMARK:  
 □ CUT ON E. HUBGUARD OF R.C.B.C.,  
 110' S. OF THE SE COR., SE1/4, SEC. 22,  
 T19P 26-S, R-1-E.  
 ELEV. = 1359.54 NGVD29

**LEGEND**

- Proposed Water Line (8" Unless Noted Otherwise)
- WTR — Existing Water Line (8" Unless Noted Otherwise)
- ⊕ — Proposed Fire Hydrant
- ⊖ — Existing Fire Hydrant
- ⊗ — Existing Fire Hydrant Removed
- Proposed Sanitary Sewer Line (8" Unless Noted Otherwise)
- EXSS — Existing Sanitary Sewer Line (8" Unless Noted Otherwise)
- ⊙ — Existing Sanitary Sewer Manhole
- ⊙ — Proposed Sanitary Sewer Manhole
- XXXX.XX — Proposed Sanitary Sewer Flow



Existing Fire Hydrant  
 to be re-located as  
 necessary to avoid  
 driveways

Existing 12" Water Line

Existing 14" Water Line  
 HILLSIDE AVE.  
 Existing 8" Water Line

**FALCON FALLS 6TH ADDITION** 20 APRIL 2015

**Baughman Company, P.A.**  
 315 Ellis St. Wichita, KS 67211 P 316-262-7271 F 316-262-0149

**Baughman** ENGINEERING | SURVEYING | PLANNING | LANDSCAPE ARCHITECTURE

E:\Projects\Falcon Falls 6th Addition\_XXXXXX\Engineering\Utility Plan\FALCON FALLS 6th UP.dwg