

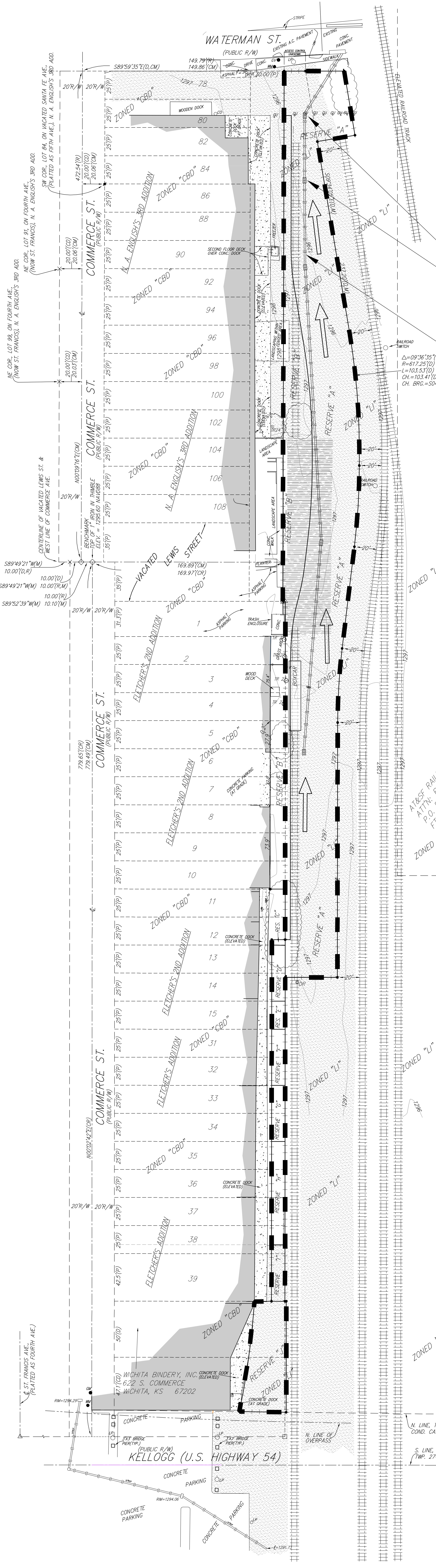
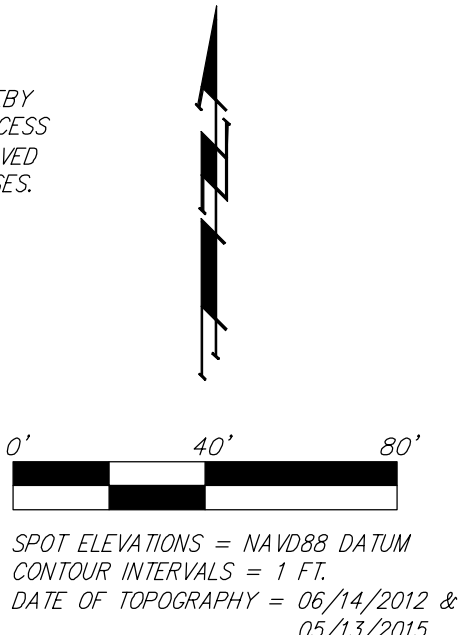
DRAINAGE CONCEPT COMMERCE DISTRICT PARKING ADDITION WICHITA, SEDGWICK COUNTY, KANSAS

OWNER/DEVELOPER:
THE FINN LOFTS, LLC
ATTN: DAVID FARHA
P.O. BOX 780626
WICHITA, KS 67278
PH: 316-558-5800

BENCHMARK:
TOP OF 1" IRON IN THIMBLE AT NORTH END OF
CENTERLINE OF THAT PART OF EXISTING COMMERCE ST.
LYING SOUTH OF THE CENTERLINE OF VACATED LEWIS ST.
ELEV. = 1295.60 NAVD88

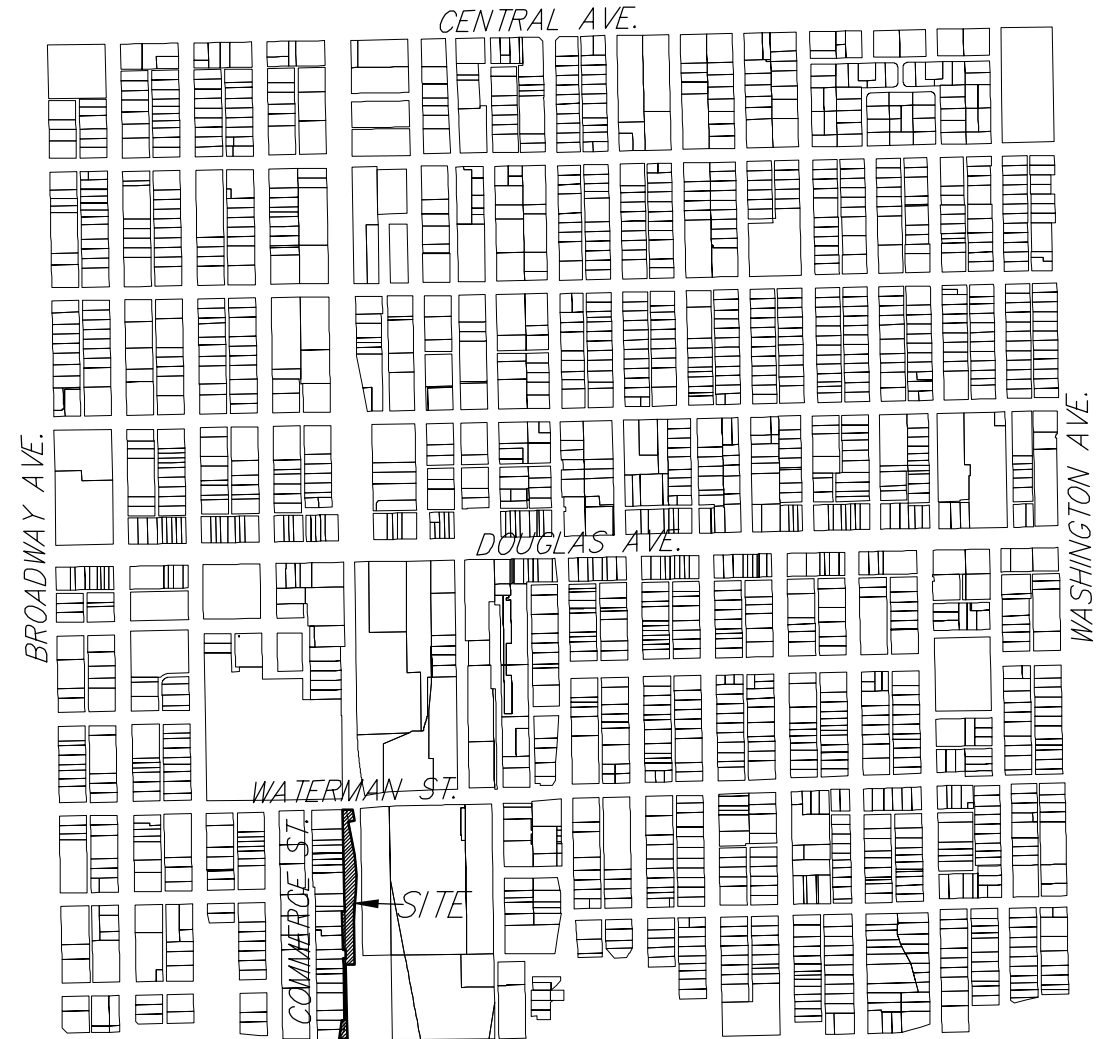
CITY OF WICHITA, KANSAS
PLANNING DEPARTMENT
ATTN: SCOTT KNEBEL
455 N. MAIN
WICHITA, KS 67202
PH: 316-268-4456

NOTE:
RESERVE "A" IS HEREBY RESERVED FOR OPEN SPACE, LANDSCAPING, DRAINAGE
PURPOSES, PUBLIC PARKING, AND PUBLIC ACCESS PURPOSES. RESERVE "B" IS HEREBY
RESERVED FOR OPEN SPACE, LANDSCAPING, DRAINAGE PURPOSES, PARKING, AND ACCESS
PURPOSES. RESERVES "C", "D", "E", "F", "G", "H", "I", AND "J" ARE HEREBY RESERVED
FOR OPEN SPACE, LANDSCAPING, DRAINAGE PURPOSES, AND PUBLIC ACCESS PURPOSES.



Install Snouts for Water Quality Treatment

Proposed SWS



AT&T RAILWAY COMPANY
ATTN: BURLINGTON NO TAX DEPT.
P.O. BOX 961089
FT. WORTH, TX 76161

AT&T RAILWAY COMPANY
ATTN: BURLINGTON NO TAX DEPT.
P.O. BOX 961089
FT. WORTH, TX 76161

- = #4 REBAR W/ "BAUGHMAN" CAP (SET)
- = #4 REBAR W/ "TILE" CAP (FOUND)
- ⊗ = CHISELED CROSS (SET)
- ⊠ = 1" SQUARE IRON BAR (FOUND)(ORIGIN UNKNOWN)
- △ = 1" IRON PIPE (FOUND)(ORIGIN UNKNOWN)
- ◇ = 1" IRON IN THIMBLE (FOUND)
- × = CHISELED CROSS (FOUND)(ORIGIN UNKNOWN)

- (M) = MEASURED
- (P) = PLATTED
- (D) = DESCRIBED
- (R) = RESURVEY MEASUREMENT
- (PRO) = PROPORTED MEASUREMENT
- (CM) = CALCULATED PER MEASURED INFO.
- (CP) = CALCULATED PER PLATTED INFO.
- (CD) = CALCULATED PER DESCRIBED INFO.
- (CR) = CALCULATED PER RESURVEY INFO.
- (CPS) = CALCULATED PER PREVIOUS SURVEY
- P.O.B. = POINT OF BEGINNING
- R/W = RIGHT-OF-WAY

- INDICATES ROCK SURFACE
- INDICATES CONCRETE LOADING DOCK (EXCEPT AS NOTED)
- INDICATES DIRT, GRAVEL, & ROCK MIXED SURFACE
- INDICATES EXISTING BUILDING

EXISTING = PROPOSED
DA = 1.1 acres
Impervious = 100%
C = 0.95
Q₂ = 4.0 cfs
Q₅ = 4.8 cfs
Q₁₀ = 5.5 cfs
Q₁₀₀ = 7.7 cfs

NOTES: Site is currently compacted gravel and some concrete parking/approaches. The site will be re-graded and paved. The project will also add storm water sewer extending from the north to approximately the mid point of the site. Area inlets will convey runoff to the SWS system in Waterman Street.

Snouts will be utilized in the two downstream inlets (with corresponding sump inlets) to meet water quality requirements for the governing body. Water quality calculations and pipe sizing will be provided upon final drainage plan.

- = Drip line of multiple trees
- = Tree with size
- CD = Cleanout
- GU = Guard Post (Railroad rail bollard)
- GV = Gas Valve
- LP = Light Pole
- WM = Water Meter
- GM = Gas Meter

Existing Visible Railroad Track

- N. = NORTH
- S. = SOUTH
- E. = EAST
- W. = WEST
- NE. = NORTHEAST
- SE. = SOUTHEAST
- NW. = NORTHWEST
- SW. = SOUTHWEST
- PROP. = PROPERTY
- COR. = CORNER
- ELEV. = ELEVATION
- BLDG. = BUILDING
- TR = TREE
- CONC. = CONCRETE

DRAINAGE CONCEPT COMMERCE DISTRICT PARKING ADDITION

14 SEPT 2015

Baughman Company, P.A.
315 Ellis St. Wichita, KS 67211 P 316-262-7271 F 316-262-0149
ENGINEERING | SURVEYING | PLANNING | LANDSCAPE ARCHITECTURE