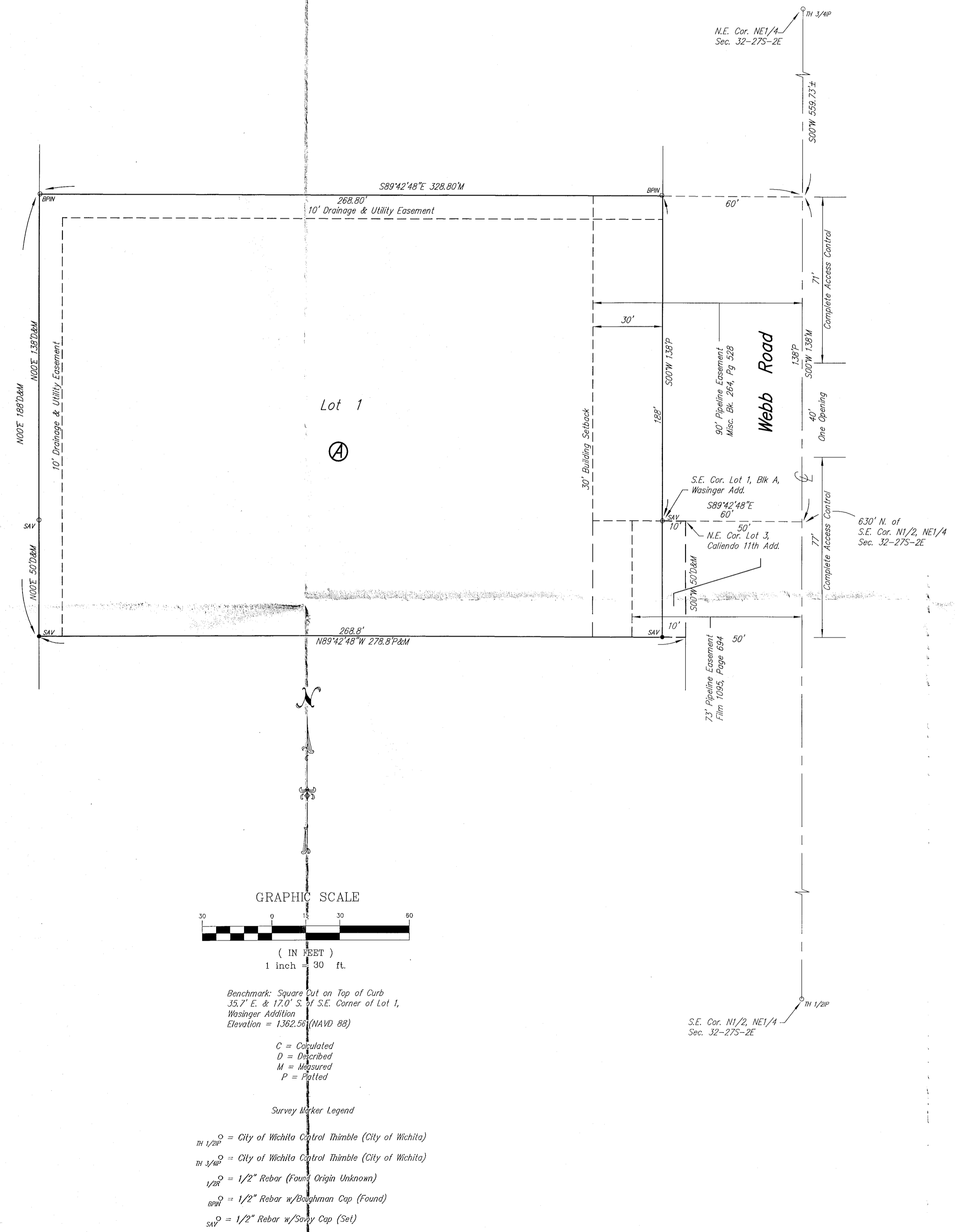


WASINGER 2ND ADDITION

Wichita, Sedgwick County, Kansas



State of Kansas) SS
 Sedgwick County)

We, Savoy Company, P.A., Surveyors in aforesaid county and state do hereby certify that, under the supervision of the undersigned, we have surveyed and platted "Wasinger 2nd Addition", Wichita, Sedgwick County, Kansas and that the accompanying plat is a true and correct exhibit of the property surveyed, described as and being a replat of the following:

Lot 1, Block A, Wasinger Addition, Wichita, Sedgwick County, Kansas AND The North 50 feet of Lot 3, Caliendo 11th Addition, Wichita, Sedgwick County, Kansas.

All Public easements and dedications being vacated by virtue of K.S.A. 12-512b as amended.

Savoy Company, P.A.

Date _____ Surveyor
 Mark A. Savoy, PS #788

Know all men by these presents that We, the undersigned, have caused the land described in the surveyor's certificate to be platted into a Lot, Block and Street to be known as "Wasinger 2nd Addition", Wichita, Sedgwick County, Kansas. The street is hereby dedicated to and for the use of the public. The drainage and utility easements are hereby granted for drainage purposes and the construction and maintenance of all public utilities. No signs, light poles, private drainage systems, masonry trash enclosures or other structures shall be located within public utility easements. A drainage plan has been developed for this plat and all drainage easements, rights-of-way, or reserves shall remain at established grades, or as modified with the approval of the City Engineer and unobstructed to allow for the conveyance of storm water. Access Controls are hereby granted as shown on the face of the plat.

J. Larry Fugate Revocable Trust dated March 25, 2010

Trustee
 J. Larry Fugate

State of Kansas) SS
 Sedgwick County)

The foregoing instrument acknowledged before me, this _____ day of _____, 2015, by J. Larry Fugate, Trustee of the J. Larry Fugate Revocable Trust dated March 25, 2010, on behalf of the Trust.

Notary Public

My App't. Exp. _____

This plat of "Wasinger 2nd Addition", Wichita, Sedgwick County, Kansas, has been submitted to and approved by the Wichita-Sedgwick County Metropolitan Area Planning Commission, Wichita, Sedgwick County, Kansas.

Dated this _____ day of _____, 2015.

Wichita-Sedgwick County Metropolitan Area Planning Commission

Chairman
 Carol Chapman Neugent

Secretary
 Dale Miller

This plat approved and all dedications shown hereon, accepted by the City Council of the City of Wichita, Kansas, this _____ day of _____, 2015.

Mayor
 Jeff Longwell

City Clerk
 Karen Sublett

Reviewed in accordance with K.S.A. 58-2005 on this _____ day of _____, 2015.

Deputy County Surveyor
 Sedgwick County Kansas
 Tricia L. Robello, PS #1246

Entered on transfer record this _____ day of _____, 2015.

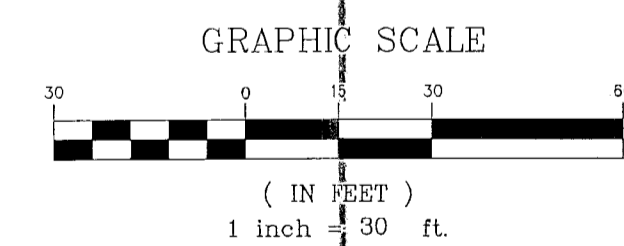
County Clerk
 Kelly B. Arnold

State of Kansas) SS
 Sedgwick County)

This is to certify that this plat has been filed for record in the office of the Register of Deeds, this _____ day of _____, 2015, at _____ o'clock _____ M: and is duly recorded.

Register of Deeds
 Bill Meek

Deputy
 Tonya Buckingham



Benchmark: Square Cut on Top of Curb
 35.7' E. & 17.0' S. of S.E. Corner of Lot 1,
 Wasinger Addition
 Elevation = 1362.56 (NAVD 88)

C = Calculated
 D = Described
 M = Measured
 P = Potted

Survey Marker Legend

- City of Wichita Control Thimble (City of Wichita)
- City of Wichita Control Thimble (City of Wichita)
- 1/2" Rebar (Found Origin Unknown)
- 1/2" Rebar w/Bingham Cap (Found)
- 1/2" Rebar w/Savoy Cap (Set)

