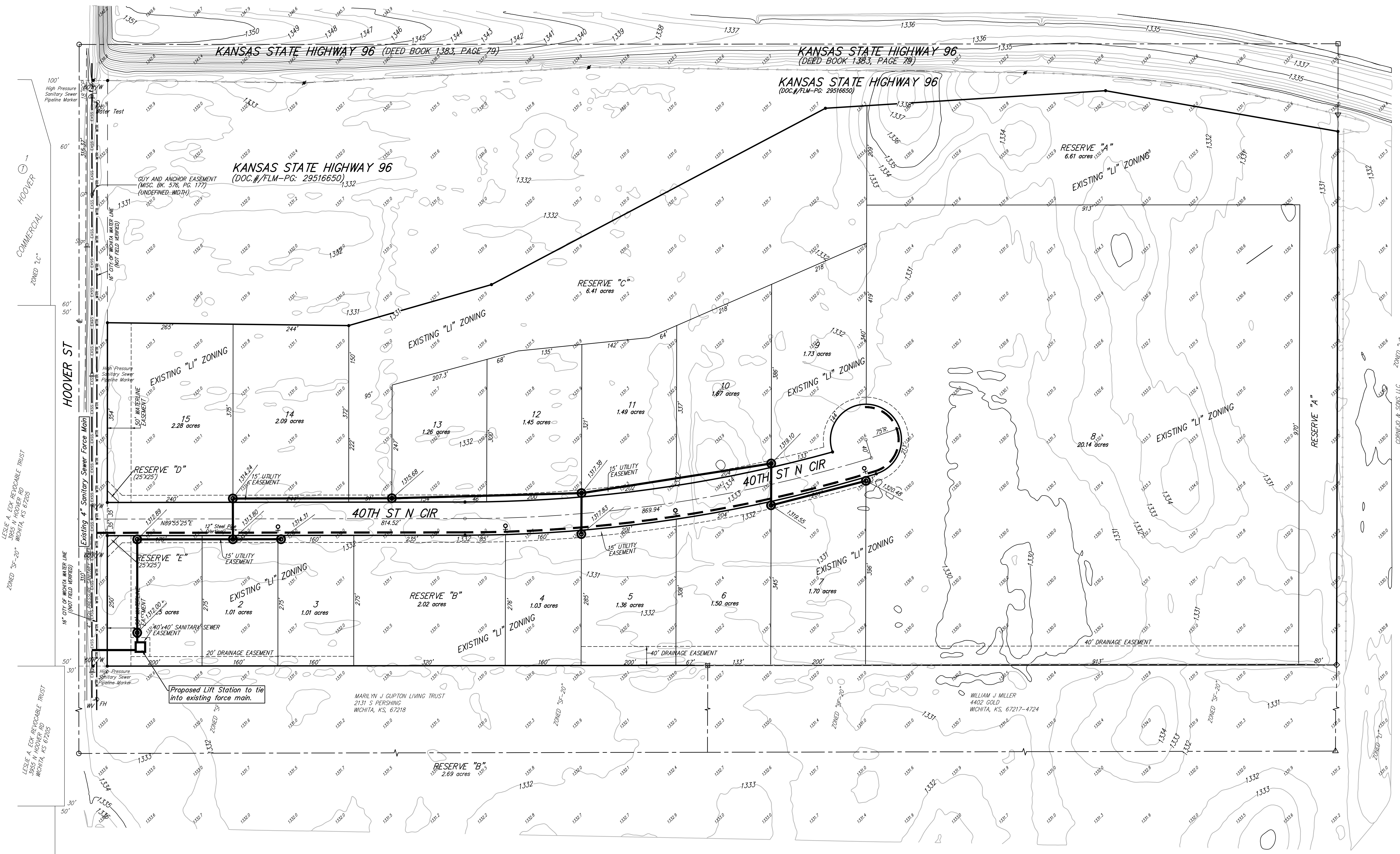
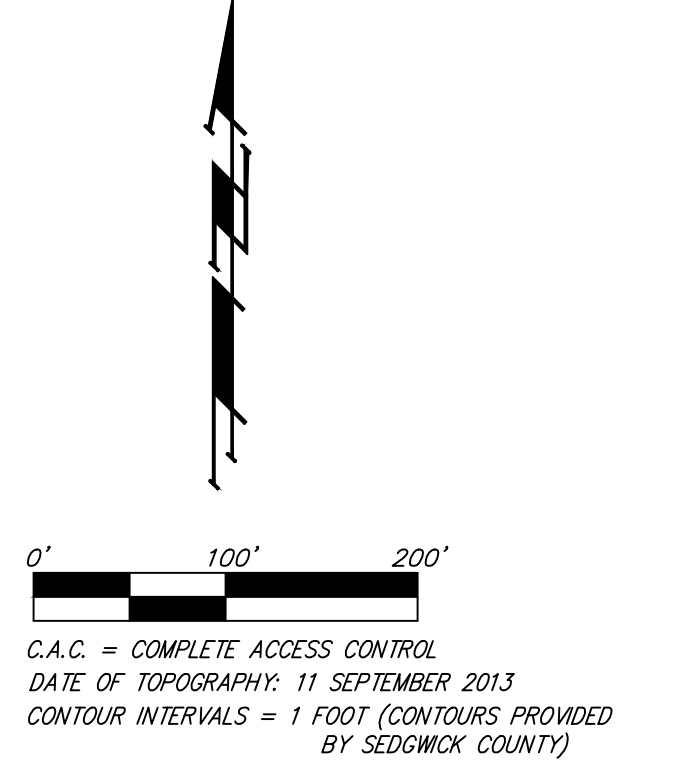


UTILITY CONCEPT

HOOVER INDUSTRIAL PARK 2ND ADDITION

SEDGWICK COUNTY, KANSAS



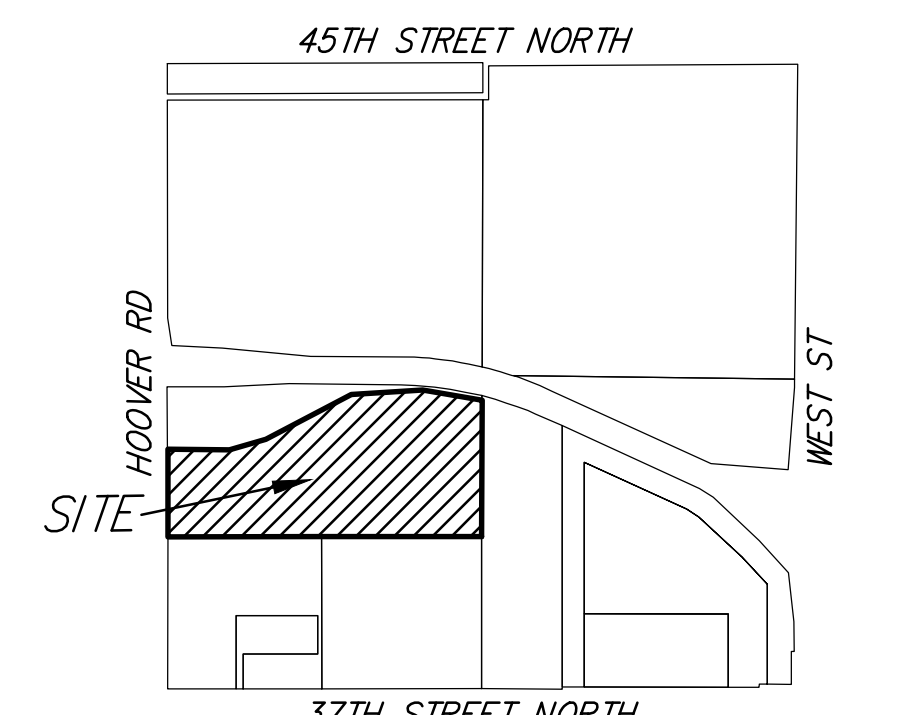
LEGEND

	Proposed Water Line (8" Unless Noted Otherwise)
	Existing Water Line (8" Unless Noted Otherwise)
	Proposed Fire Hydrant
	Existing Fire Hydrant
	Existing Fire Hydrant Removed
	Proposed Sanitary Sewer Line (8" Unless Noted Otherwise)
	Existing Sanitary Sewer Line (8" Unless Noted Otherwise)
	Existing Sanitary Sewer Manhole
	Proposed Sanitary Sewer Manhole
	Proposed Sanitary Sewer Cleanout
	Proposed Sanitary Sewer Flow
	Zero to Marginal Basement Service

RESERVES "A" AND "C" ARE RESERVED FOR OPEN SPACE, LAKES, LANDSCAPING, OFF-SITE SIGNS, BILLBOARDS AND RELATED APPURTENANCES, DRAINAGE PURPOSES, AND UTILITIES AS CONFINED TO EASEMENTS.

RESERVE "B" IS RESERVED FOR OPEN SPACE, LANDSCAPING, LAKES, DRAINAGE PURPOSES, AND UTILITIES AS CONFINED TO EASEMENT.

RESERVES "D" AND "E" ARE RESERVED FOR OPEN SPACE, LANDSCAPING, ENTRY MONUMENTS, AND SIGNAGE.



FH = Fire Hydrant
 GP = Guy Pole
 CA = Guy Anchor
 Sign = Sign
 WV = Water Valve

	WATER LINE
	AT&T LINE
	GAS LINE
	CABLE, TV
	FENCE
	OVERHEAD ELECTRIC LINE
	SANITARY SEWER
	UNDERGROUND ELECTRIC LINE
	STORMWATER SEWER

- = #4 REBAR W/ "BAUGHMAN" CAP (SET)
 - = #4 REBAR W/ "BAUGHMAN" CAP (FOUND)
 - = 1/2" IRON PIPE (FOUND) (ORIGIN UNKNOWN)
 - △ = 3/4" IRON PIPE (FOUND) (ORIGIN UNKNOWN)
 - ▽ = #5 REBAR W/ ILLEGIBLE CAP (FOUND) (ORIGIN UNKNOWN)
 - ◇ = #5 REBAR W/ "GARBER" CAP (FOUND)
 - ◇ = 3/4" IRON PIPE W/ "MOHRING" CAP (FOUND)
 - ⊠ = #4 REBAR W/ "ARMSTRONG" CAP (FOUND)
- (M) = MEASURED
 (P) = PLATTED
 (D) = DESCRIBED
 (CM) = CALCULATED PER MEASURED INFO.
 (CP) = CALCULATED PER PLATTED INFO.
 (CD) = CALCULATED PER DESCRIBED INFO.
 (CO) = CALCULATED PER SUBDIVISION OF QUARTER SECTION

HOOVER INDUSTRIAL PARK 2ND ADDITION

Baughman Company, P.A.
 315 Ellis St., Wichita, KS 67211 P 316-262-7271 F 316-262-0149
 baughman.com
 ENGINEERING | SURVEYING | PLANNING | LANDSCAPE ARCHITECTURE