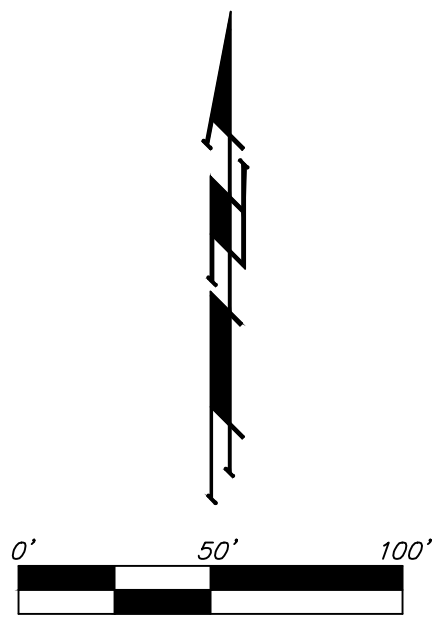


UTILITY PLAN

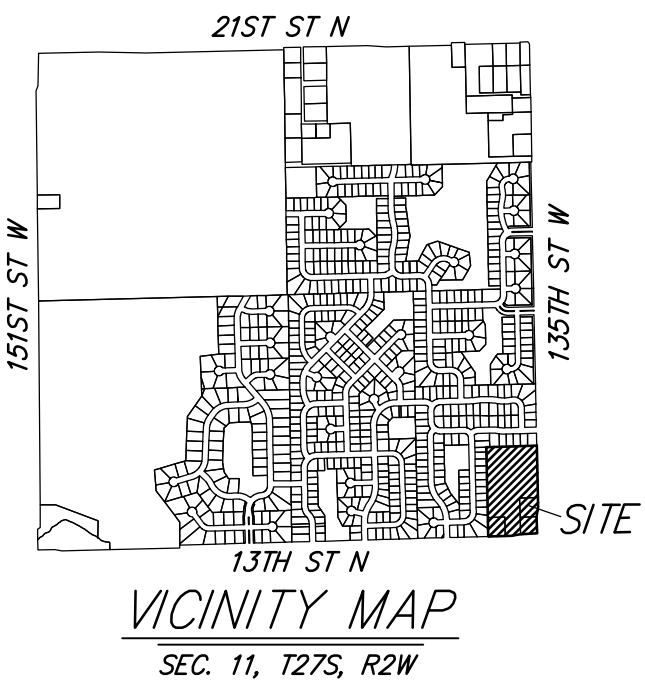
COPPER GATE 3RD ADDITION

WICHITA, SEDGWICK COUNTY, KANSAS



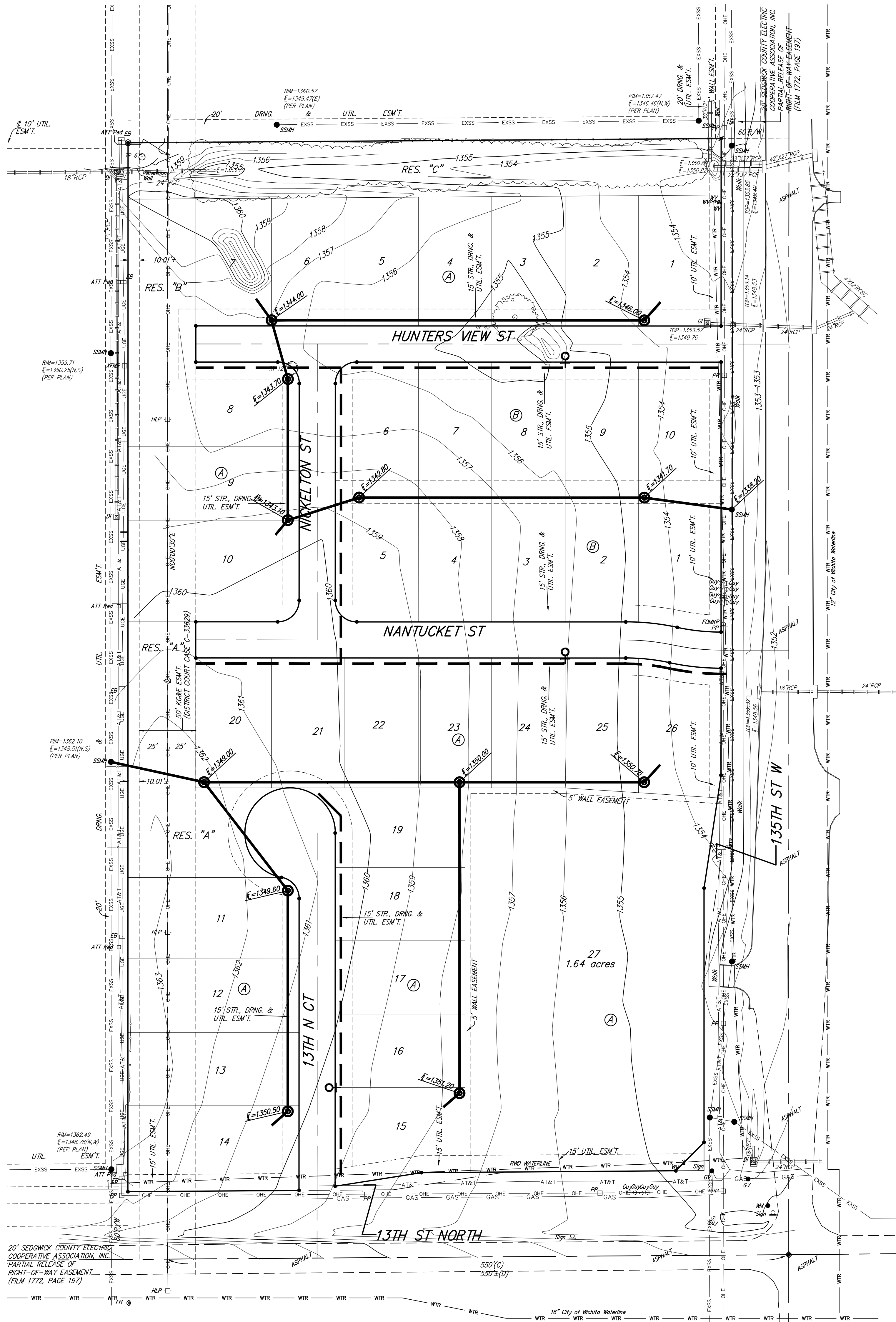
BENCHMARK:
 "X" CUT TOP OF THE NE CORNER OF DROP INLET.
 82.5'± NORTH & 30.5'± WEST OF THE SE COR., SE1/4,
 SEC. 11, TWP. 27-S, R-2-W.
 ELEV. = 1353.75 (NAVD88)

- ⊙ = #4 REBAR (FOUND)
- ⊙ = #4 REBAR W/ "BAUGHMAN" CAP (SET)
- ⊙ = #4 REBAR W/ "BAUGHMAN" CAP (FOUND)
- ⊙ = #5 REBAR W/ "SEDGWICK COUNTY" METAL CAP (FOUND)



LEGEND

- Proposed Water Line (8" Unless Noted Otherwise)
- WTR — Existing Water Line (8" Unless Noted Otherwise)
- ♀ Proposed Fire Hydrant
- ♀ Existing Fire Hydrant
- ⊗ Existing Fire Hydrant Removed
- Proposed Sanitary Sewer Line (8" Unless Noted Otherwise)
- EXSS — Existing Sanitary Sewer Line (8" Unless Noted Otherwise)
- ⊙ Existing Sanitary Sewer Manhole
- ⊙ Proposed Sanitary Sewer Manhole
- XXXX.XX Proposed Sanitary Sewer Flow



20' SEDGWICK COUNTY ELECTRIC COOPERATIVE ASSOCIATION, INC. PARTIAL RELEASE OF RIGHT-OF-WAY EASEMENT (FILM 1772, PAGE 197)

16" City of Wichita Waterline