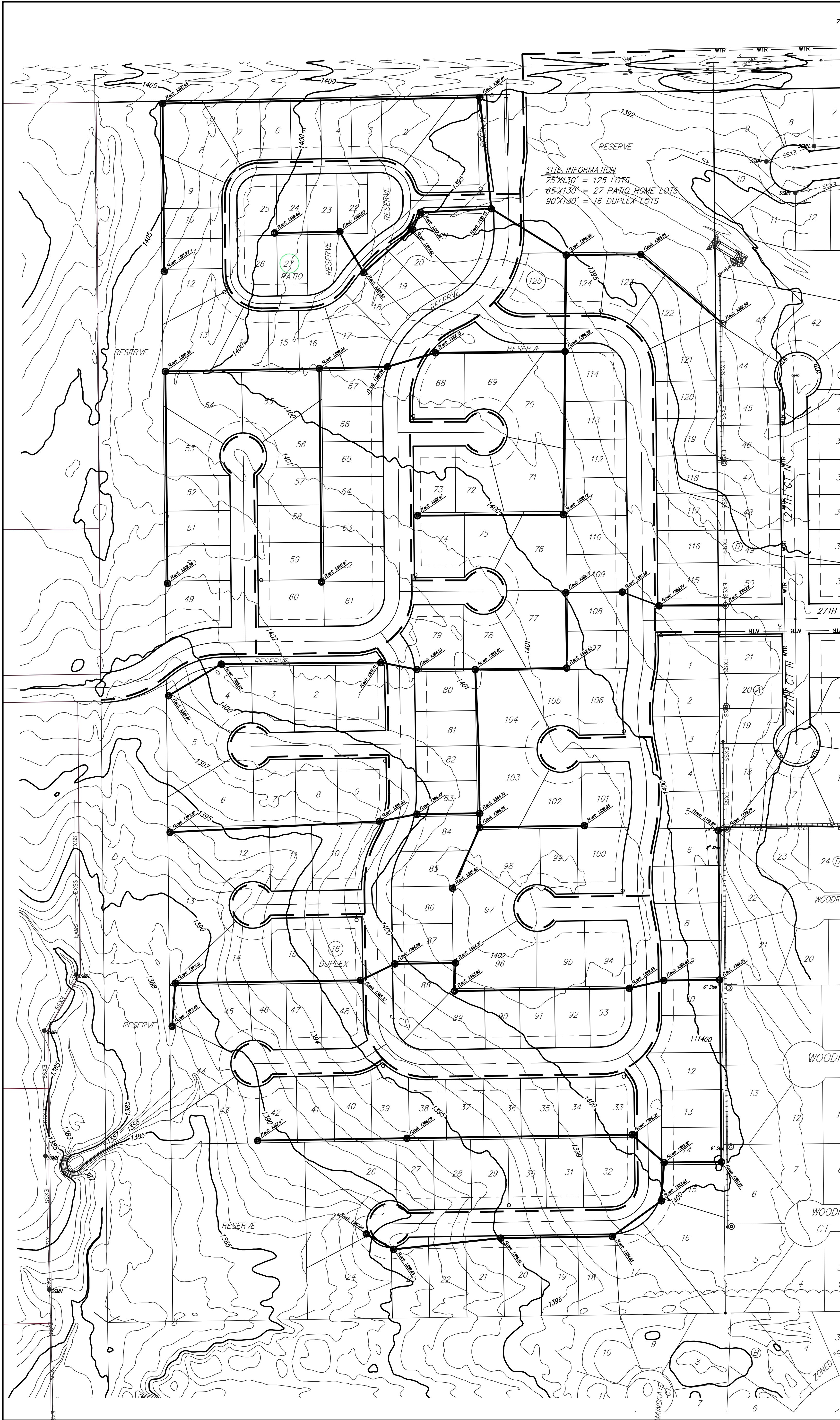


FIREFLY WAY

AN ADDITION TO WICHITA, SEDGWICK COUNTY, KANSAS



SITE INFORMATION
75'X130' = 125 LOTS
65'X130' = 27 PATIO HOME LOTS
90'X130' = 16 DUPLEX LOTS



LEGEND

- Proposed Water Line (8" Unless Noted Otherwise)
- Existing Water Line (8" Unless Noted Otherwise)
- Proposed Fire Hydrant
- Existing Fire Hydrant
- Existing Fire Hydrant Removed
- Proposed Sanitary Sewer Line (8" Unless Noted Otherwise)
- Existing Sanitary Sewer Line (8" Unless Noted Otherwise)
- Existing Sanitary Sewer Manhole
- Proposed Sanitary Sewer Manhole
- Proposed Sanitary Sewer Cleanout
- XXXX.XX Proposed Sanitary Sewer Flow

FIREFLY WAY

Baughman Company, P.A.
315 Ellis St. Wichita, KS 67211 P 316-262-7271 F 316-262-0149
ENGINEERING | SURVEYING | PLANNING | LANDSCAPE ARCHITECTURE