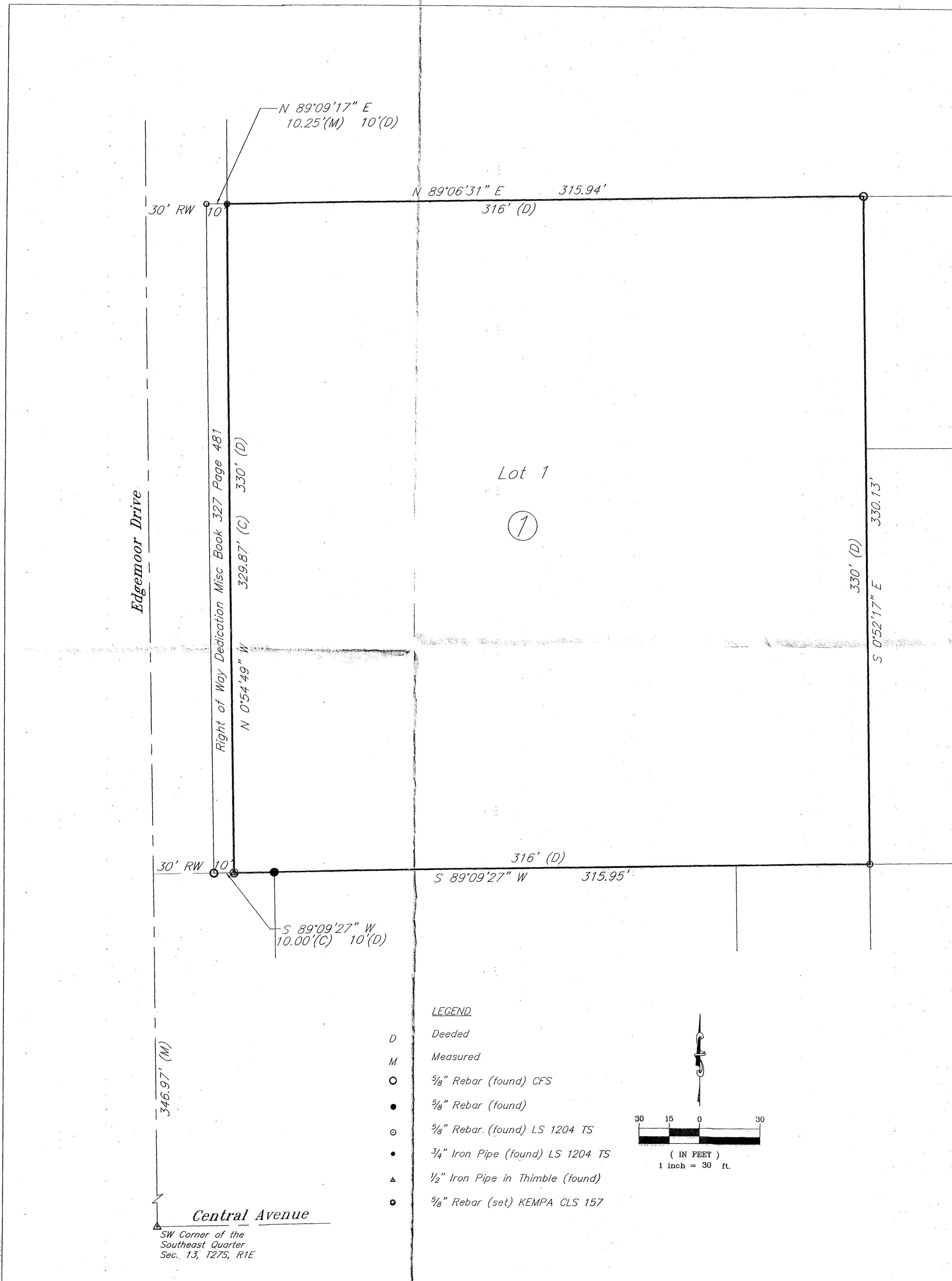


### Edgemoor Commercial Addition Wichita, Kansas

Part of the SE 1/4, Section 13, Township 27 South, Range 1 East



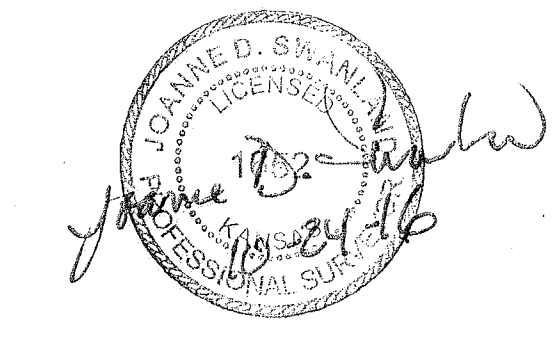
State of Kansas }  
County of Sedgwick } SS

I, Joanne D. Swanland, a licensed land surveyor of the State of Kansas, do hereby certify that the following described tract of land was surveyed on this 14th day of July, 2016 and the accompanying one-step final plat prepared and that all the monuments shown herein actually exist and their positions are correctly shown to the best of my knowledge and belief.

**LEGAL DESCRIPTION**

Beginning at a point 650 feet South and 30 feet East of the Northwest corner of the Southwest Quarter of the Southeast Quarter of Section 13, Township 27 South, Range 1 East of the 6th P.M., Sedgwick County, Kansas; thence East along the South line of the tract taken under condemnation by the Board of Education of the City of Wichita, Kansas, a distance of 326 feet; thence South, parallel to the West line of said Southeast Quarter, a distance of 330 feet; thence West, parallel to the South line of said Southeast Quarter, a distance of 326 feet more or less, to a point 30 feet East of the West line of said Southeast Quarter; thence North on a line 30 feet East of and parallel to the West line of said Southeast Quarter, a distance of 330 feet, to the point of beginning

All easements and rights-of-way within said tract are hereby vacated by virtue of KSA 12-512b amended.



Joanne D. Swanland, L.S. #1652

State of Kansas }  
County of Sedgwick } SS

Know all men by these presents, that we, the undersigned, have caused the land described in the surveyor's certificate to be platted into a Lot and Block, to be known as Edgemoor Commercial Addition, Wichita, Sedgwick County, Kansas. Any street dedications shown are dedicated to and for the use of the public. No signs, light poles, private drainage systems, masonry trash enclosures or other structures shall be located within public utility easements. A drainage plan has been developed for the plat and that all drainage easements, rights-of-way, or reserves shall remain at established grades or as modified with the approval of the applicable City or County Engineer, and unobstructed to allow for the conveyance of stormwater. And further that the land contained herein is held and shall be conveyed subject to any applicable restrictions, reservations and covenants now on file or hereafter filed in the Office of the Register of Deeds of Sedgwick County, Kansas.

By: Gary Oborny 10/31/2016  
Gary Oborny, Managing Member, ECD, LLC, A Kansas Limited Liability Co. date

State of Kansas }  
County of Sedgwick } SS

This instrument was acknowledged before me on this 31 day of October, 2016, by Gary Oborny, Managing Member, ECD, LLC, A Kansas Limited Liability Co.

Tricia Hayes  
Notary Public Tricia Hayes  
My Commission Expires: 08-10-17



State of Kansas }  
City of Wichita } SS

This plat of Edgemoor Commercial Addition, Wichita, Sedgwick County, Kansas, has been submitted to and approved by the Wichita-Sedgwick County Metropolitan Area Planning Commission, Wichita, Kansas. Dated this \_\_\_ day of \_\_\_, 2016.  
Wichita-Sedgwick County Metropolitan Area Planning Commission.

David W. Foster, Chair

Dale Miller, Secretary

State of Kansas }  
City of Wichita } SS

This plat approved and all dedications shown hereon accepted by the City Council of the City of Wichita, Kansas, this \_\_\_ day of \_\_\_, 2016.

At the Direction of the City Council

Jeff Longwell, Mayor

Karen Sublett, City Clerk

Entered on transfer record this \_\_\_ day of \_\_\_, 2016.

Kelly B. Arnold, County Clerk

State of Kansas }  
County of Sedgwick } SS

This is to certify that this plat has been filed for record in the Office of the Register of Deeds this \_\_\_ day of \_\_\_, 2016, at \_\_\_ o'clock \_\_\_, and is duly recorded.

Tonya Buckingham, Register of Deeds

Judy J. Paget, Deputy

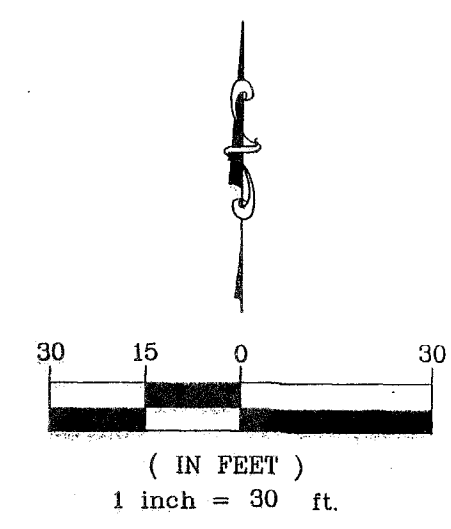
Reviewed in accordance with K.S.A. 58-2005 on this \_\_\_ day of \_\_\_, 2016.

Tricia L. Robello, L.S. #1246  
Deputy County Surveyor  
Sedgwick County, Kansas

16127Edgemoor Commercial Final Plat.dwg Prepared: 10-19-16

**KEMILLER**  
ENGINEERING PA  
117 E. Lewis, Wichita, KS 67202 (316)264-0242

- LEGEND**
- D Deeded
  - M Measured
  - 5/8" Rebar (found) CFS
  - 5/8" Rebar (found)
  - 5/8" Rebar (found) LS 1204 TS
  - 3/4" Iron Pipe (found) LS 1204 TS
  - ▲ 1/2" Iron Pipe in Thimble (found)
  - 5/8" Rebar (set) KEMPA CLS 157



Central Avenue  
SW Corner of the Southeast Quarter Sec. 13, T27S, R1E