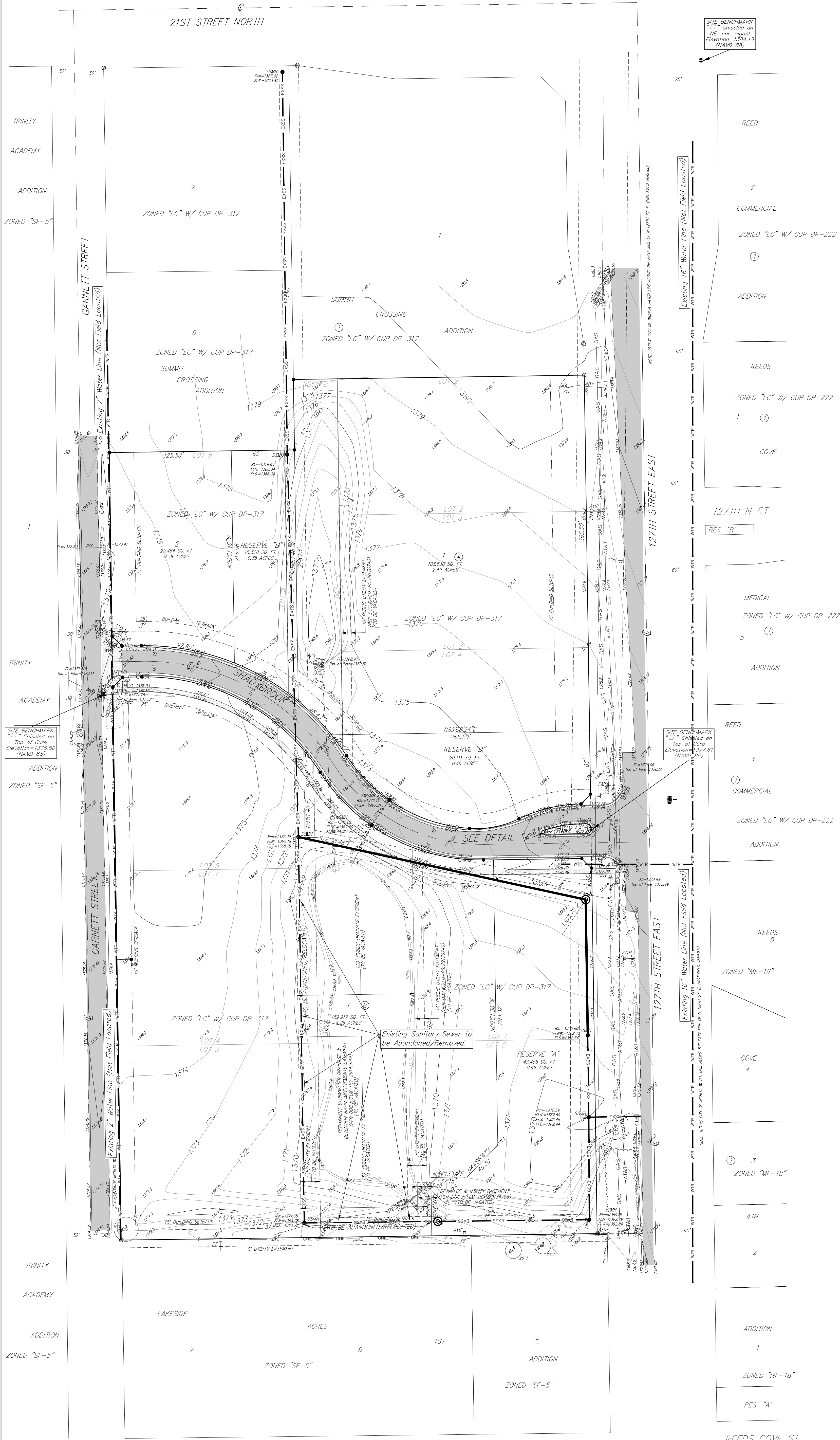


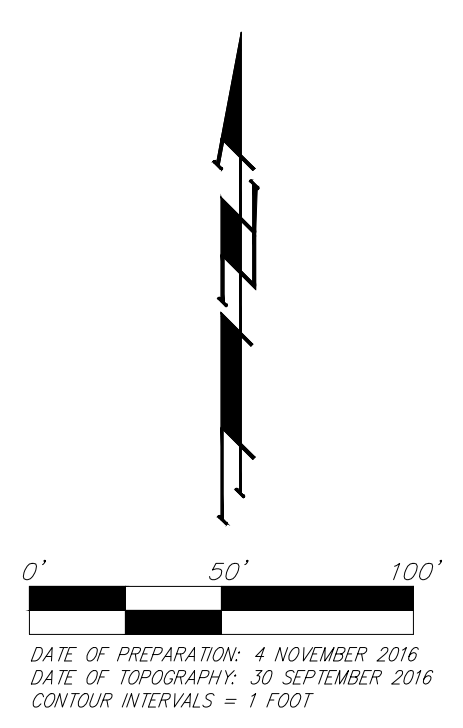
UTILITY PLAN

SUMMIT CROSSING 2ND ADDITION

WICHITA, SEDGWICK COUNTY, KANSAS



SITE BENCHMARK
"1" Chiseled on
NE cor. signal
Elevation=1384.13
(NAVD 88)



OWNER:
ACCN ENTERPRISES, LLC, A KANSAS
LIMITED LIABILITY COMPANY
17498 SW MEADOWLARK RD.
ROSE HILL, KS 67133-8100

CONTRACT PURCHASER:
BFCO, LLC
11237 NALL AVE. STE 100
LEAWOOD, KS 66211

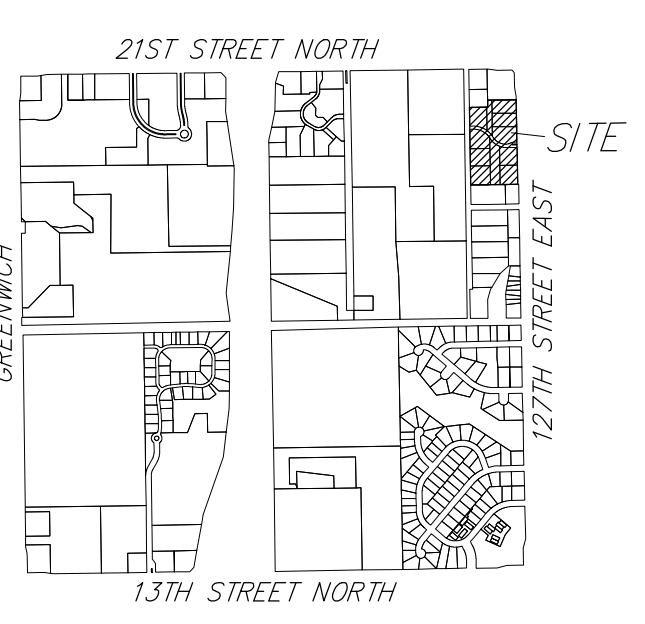
LEGAL DESCRIPTION:
LOTS 2, 3, 4, AND 5, BLOCK 1, SUMMIT
CROSSING ADDITION, AN ADDITION TO
WICHITA, SEDGWICK COUNTY, KANSAS,
TOGETHER WITH LOTS 1, 2, 3, 4, AND 5,
BLOCK 2, IN SAID SUMMIT CROSSING
ADDITION, TOGETHER WITH RESERVES A,
B, AND C, IN SAID SUMMIT CROSSING
ADDITION.

RESERVE "A" IS RESERVED FOR LAKES,
OPEN SPACE, SIDEWALKS, LANDSCAPING,
PARKING LOTS, ACCESS DRIVES, DRAINAGE
PURPOSES AND UTILITY AS CONFINED TO
EASEMENTS.

RESERVES "B" AND "D" ARE RESERVED
FOR LAKES, OPEN SPACE, SIDEWALKS,
LANDSCAPING, PARKING LOTS, DRAINAGE
PURPOSES AND UTILITY AS CONFINED TO
EASEMENTS.

RESERVE "C" IS RESERVED FOR
MONUMENT SIGNS, SIDEWALKS, BERMS,
LANDSCAPING, UTILITIES AND DRAINAGE
PURPOSES.

- = #4 Baughman Rebar Set
- = #5 Rebar Found (Origin Unknown)
- ⊙ = #4 MIKEC Capped Rebar Found
- ⊙ = #5 MIKEC Capped Rebar Found
- ⊙ = Wooden Hub Stake Set
- ⊙ = Benchmark



- AHP = ATT Ped = A.T.&T. Telephone Pedestal
FH = FH = Fire Hydrant
E = E = Overhead Electric Line
PM = PM = Pipe Marker
PP = PP = Power Pole
Sign = Sign = Sign
SSM = SSM = Sanitary Sewer Manhole
SSSM = SSSM = Stormwater Sewer Manhole
WM = WM = Water Meter
WV = WV = Water Valve
- GAS — GAS — GAS — GAS — Gas Line
— OHE — OHE — OHE — OHE — Overhead Electric Line
— UGE — UGE — UGE — UGE — Underground Electric Line
— EXSS — EXSS — EXSS — EXSS — Sanitary Sewer Line
— SWS — SWS — SWS — SWS — Stormwater Sewer Line
— A&T — A&T — A&T — A&T — Telephone Line
— WTR — WTR — WTR — WTR — Water Line
— — — — — Fence Line
- Asphalt
Concrete

- Proposed Water Line (8" Unless Noted Otherwise)
— WTR — Existing Water Line (8" Unless Noted Otherwise)
♀ Proposed Fire Hydrant
♀ Existing Fire Hydrant
♀ Existing Fire Hydrant Removed
— Proposed Sanitary Sewer Line (8" Unless Noted Otherwise)
— EXSS — Existing Sanitary Sewer Line (8" Unless Noted Otherwise)
SSM ● Existing Sanitary Sewer Manhole
⊙ Proposed Sanitary Sewer Manhole
⊙ Proposed Sanitary Sewer Cleanout
1382.41 Proposed Sanitary Sewer Flow
⊙ Zero to Marginal Basement Service

SUMMIT CROSSING 2ND ADDITION

4 November 2016

Baughman Company, P.A.
315 Ellis St. Wichita, KS 67211 P 316-262-7211 F 316-262-0149

2nd UP.dwg.RRK