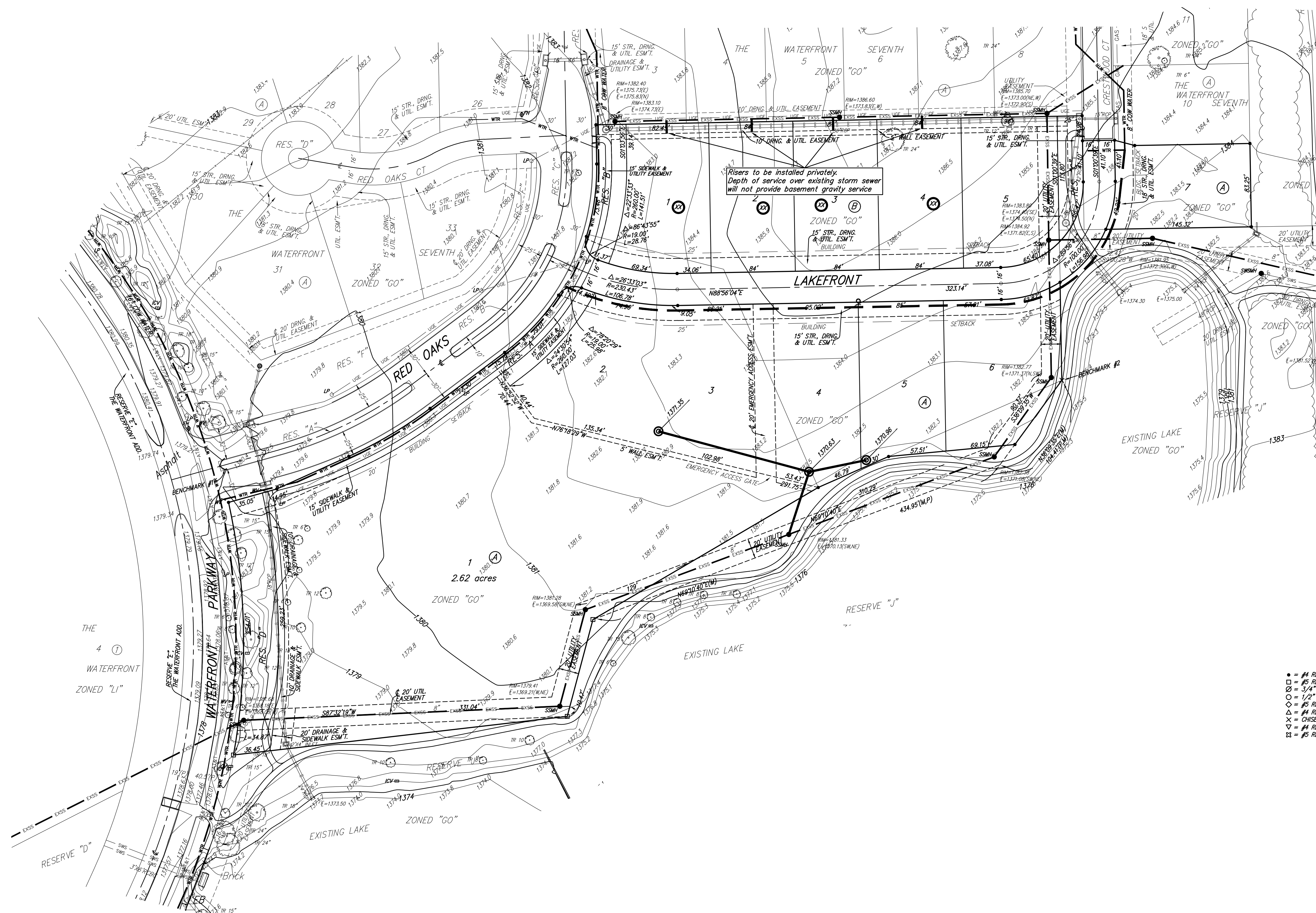
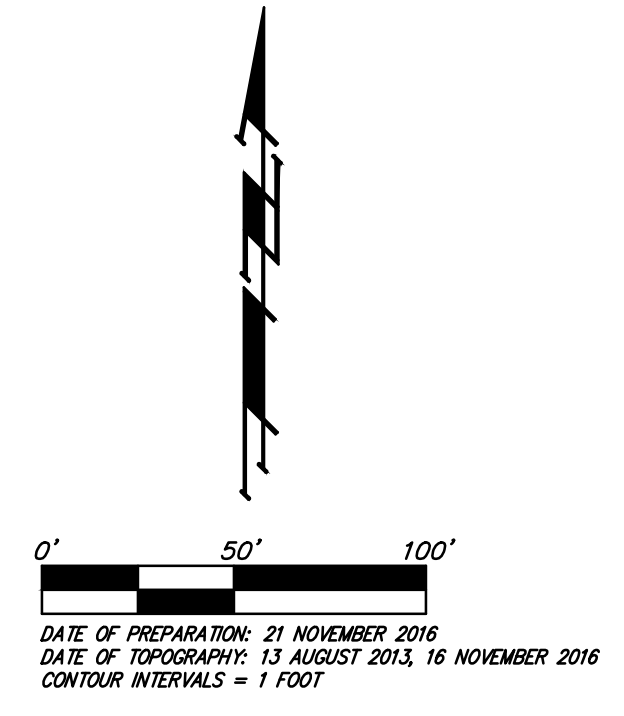


UTILITY PLAN

THE WATERFRONT NINTH ADDITION WICHITA, SEDGWICK COUNTY, KANSAS



LEGEND

- Proposed Water Line (8" Unless Noted Otherwise)
- Existing Water Line (8" Unless Noted Otherwise)
- ♀ Proposed Fire Hydrant
- ♂ Existing Fire Hydrant
- ✕ Existing Fire Hydrant Removed
- Proposed Sanitary Sewer Line (8" Unless Noted Otherwise)
- Existing Sanitary Sewer Line (8" Unless Noted Otherwise)
- Existing Sanitary Sewer Manhole
- ⊙ Proposed Sanitary Sewer Manhole
- ⊕ Proposed Sanitary Sewer Cleanout
- ⊖ Proposed Sanitary Sewer Flow
- ⊗ Zero to Marginal Basement Service

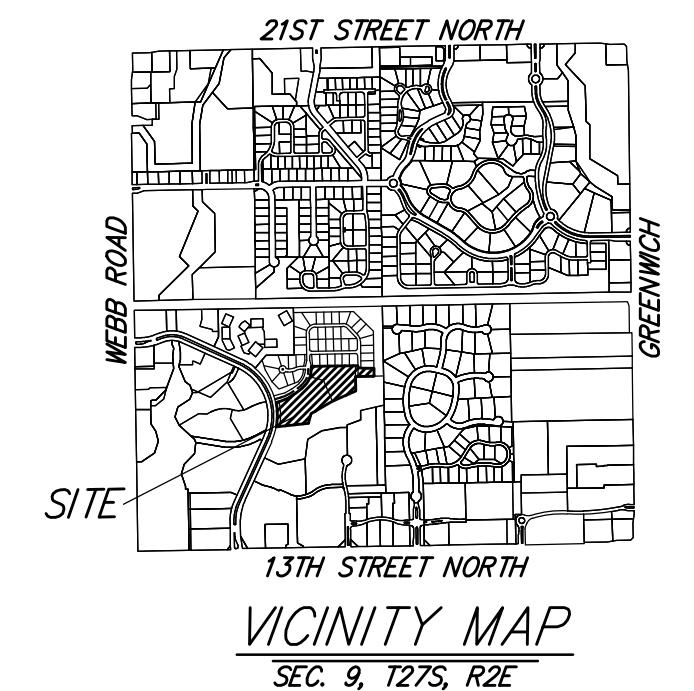
BENCHMARK #1:
CHISELED SQUARE ON TOP OF CURB, WEST END OF SOUTH MEDIAN CURB WITHIN RED OAKS R/W, EAST SIDE OF WATERFRONT PARKWAY R/W, (SEE FACE OF PLAT).
ELEV. = 1380.50 NAVD88

BENCHMARK #2:
CHISELED CROSS ON CONC. SIDEWALK, DEFLECTION CORNER IN NORTHWEST LINE OF RESERVE "J", THE WATERFRONT SEVENTH ADDITION. (SEE FACE OF PLAT).
ELEV. = 1381.88 NAVD88

MINIMUM BUILDING PAD ELEVATIONS FOR LOWEST OPENING TO THE STRUCTURES

LOT	BLOCK	ELEVATION NAVD88
1, 4-7	A	1381.0

- = #4 REBAR W/ "BAUGHMAN" CAP (SET)
- ⊙ = #5 REBAR W/ "MKEC" CAP (FOUND)
- ⊕ = 3/4" IRON IN THIMBLE (FOUND)
- ⊖ = 1/2" IRON (FOUND)(ORIGIN UNKNOWN)
- ⊗ = #5 REBAR (FOUND)(UNKNOWN ORIGIN)
- △ = #4 REBAR W/ "Viking LS908" CAP (FOUND)
- ⊕ = CHISELED CROSS (FOUND)(ORIGIN UNKNOWN)
- ⊖ = #4 REBAR (FOUND)(ORIGIN UNKNOWN)
- ⊗ = #5 REBAR W/ "T&E" CAP (FOUND)



NOTE:
A drainage plan has been developed for the plat and that all drainage easements, rights-of-way, or reserves shall remain at established grades or as modified with the approval of the applicable City or County Engineer and unobstructed to allow for the conveyance of stormwater.