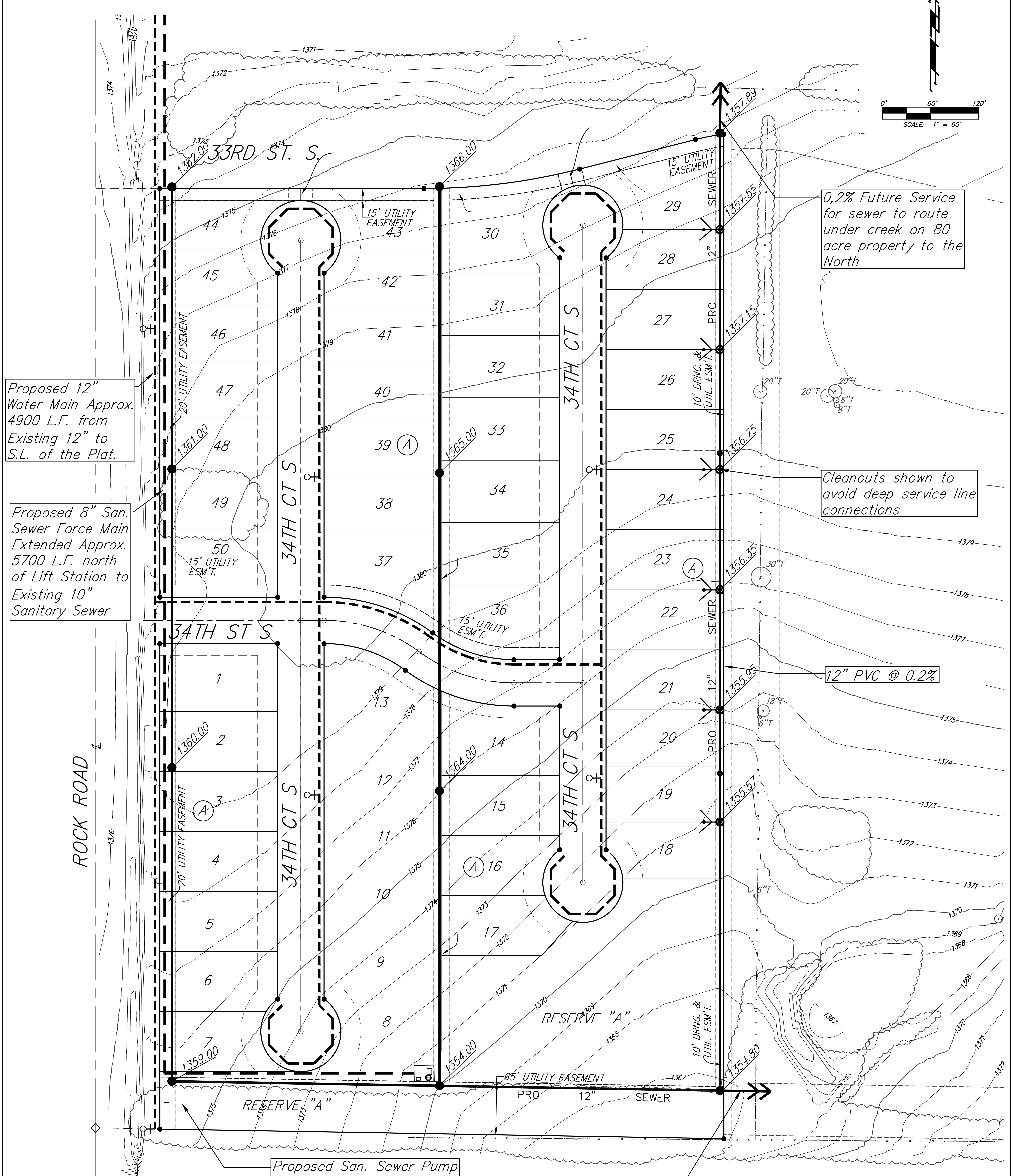
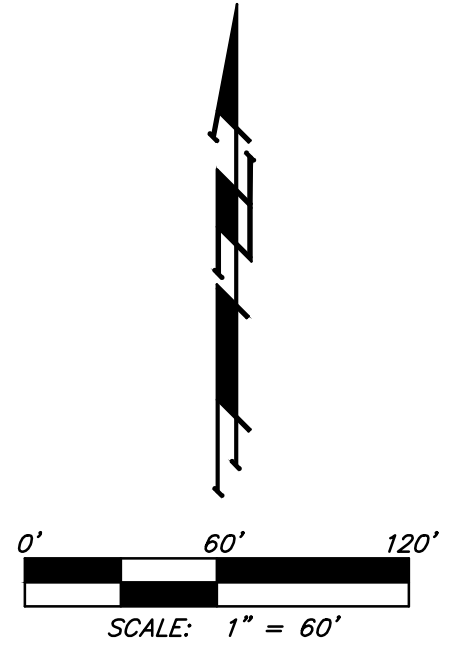


UTILITY PLAN
ROCKY FORD ADDITION
WICHITA, SEDGWICK COUNTY, KANSAS



Proposed 12" Water Main Approx. 4900 L.F. from Existing 12" to S.L. of the Plat.

Proposed 8" San. Sewer Force Main Extended Approx. 5700 L.F. north of Lift Station to Existing 10" Sanitary Sewer

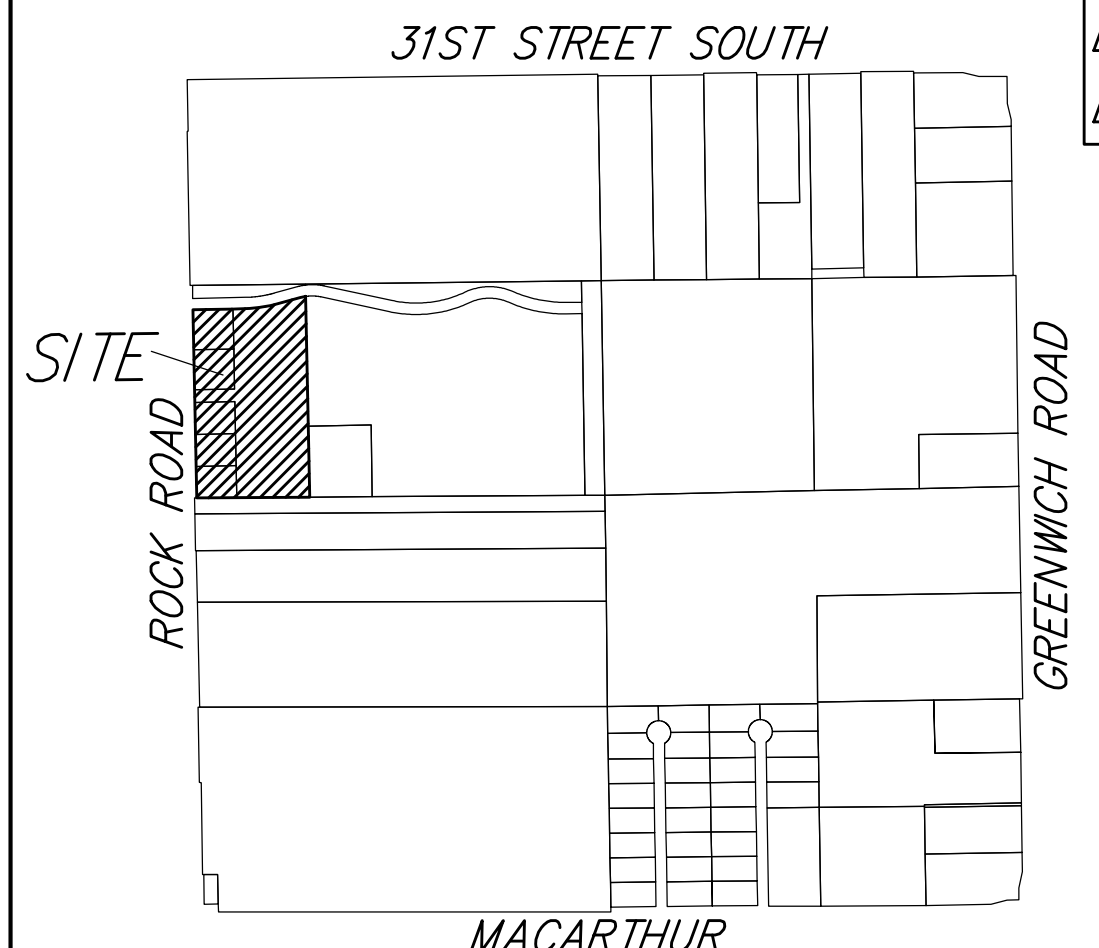
0.2% Future Service for sewer to route under creek on 80 acre property to the North

Cleanouts shown to avoid deep service line connections

12" PVC @ 0.2%

Proposed San. Sewer Pump Station (Service Basin, Depths, and Sizing to be Determined during Design).

10" @ 0.25% Future Service to East



LEGEND

	Proposed Water Line (8" Unless Noted Otherwise)
	Existing Water Line (8" Unless Noted Otherwise)
	Proposed Sanitary Sewer Line (8" Unless Noted Otherwise)
	Existing Sanitary Sewer Line (8" Unless Noted Otherwise)
	Proposed Sanitary Sewer Manhole
	Proposed Fire Hydrant
	Proposed Sanitary Sewer Flow
	Sanitary Sewer Clean Out

MACARTHUR
VICINITY MAP
 SEC. 8, T28S, R2E