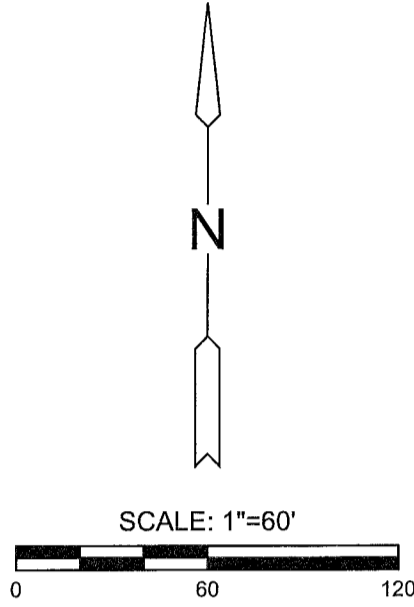


FINAL TRACING REC'D 8-02-17

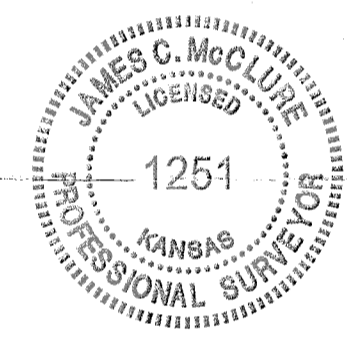
FINAL PLAT CARGILL ADDITION

AN ADDITION TO WICHITA, SEDGWICK COUNTY, KANSAS
 a replat of portions of Parmenters Second Addition, Glaze's Addition, Carey Avenue Addition, Mead Avenue, and 15th Street,
 all in the Southwest Quarter, Section 9, Township 27 South, Range 1 East, of the 6th Principal Meridian, Wichita, Sedgwick County, Kansas

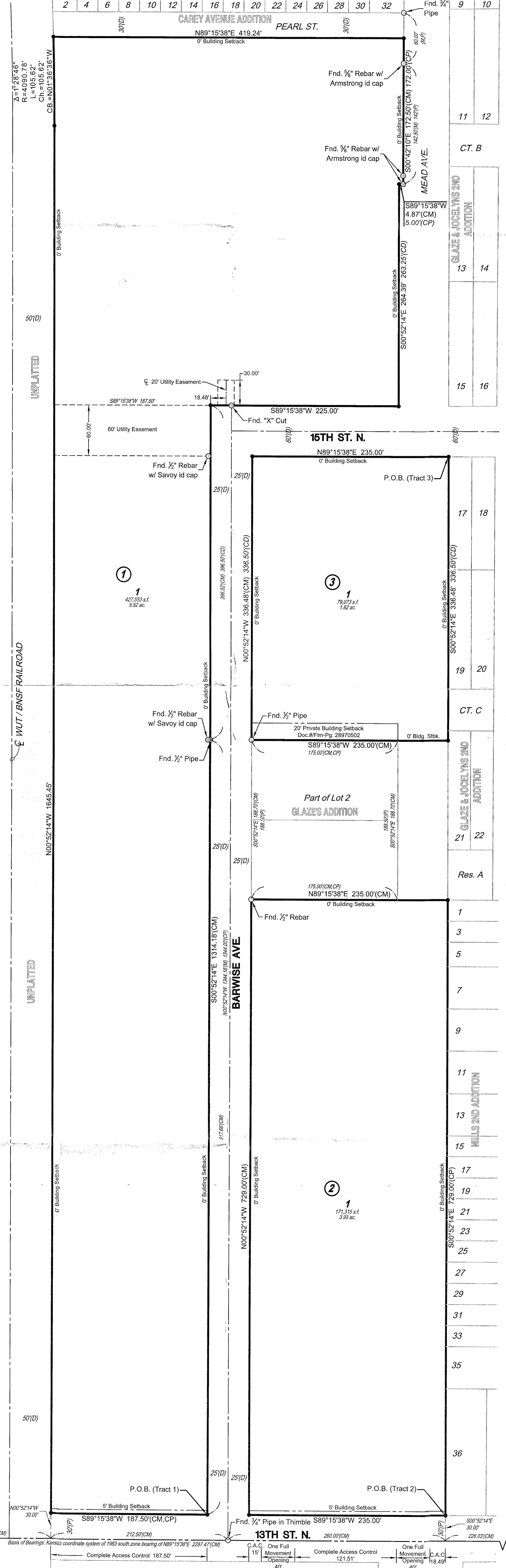
Cargill Addition



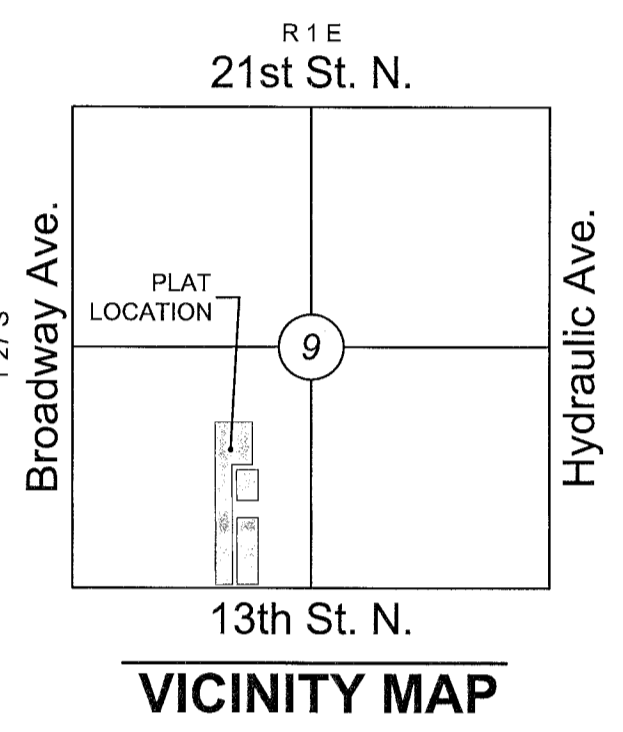
Basis of Bearings: Kansas coordinate system of 1983 south zone bearing of N89°15'38"E on the south line of the Southwest Quarter, Section 9, Township 27 South, Range 1 East of the 6th Principal Meridian. This plat is surveyed and platted on NAD83 using Kansas state plane south zone coordinates, modified to the surface, having a combined adjustment scale factor of 1.000120014



- LEGEND**
 Date of Survey: May 2017
- △ = Section Corner Monument Found
 - = Found monument (see annotation for type)
 - = Set 1/2" rebar w/ MKEC CLS 39 id. cap (or see annotation for type)
 - (M) = Measured
 - (D) = Described
 - (P) = Platted
 - (CM) = Calculated from Measurement
 - (CD) = Calculated from Described
 - (CP) = Calculated from Plat
 - C.A.C. = Complete Access Control
 - 1 = Lot
 - ① = Block



9	10
11	12
CT. B	
13	14
GLAZE & JOCELYNS AND ADDITION	
15	16
UNPLATTED	
17	18
CT. C	
19	20
GLAZE & JOCELYNS AND ADDITION	
21	22
Res. A	
1	
3	
5	
7	
9	
11	
MILLS AND ADDITION	
13	
15	
17	
19	
21	
23	
25	
27	
29	
31	
33	
35	
36	



1/2

SW. cor., SW 1/4, Sec. 9,
 T27S, R1E, 6th P.M.
 Fnd. 1/2" Pipe in Thimble

S. Line, SW 1/4 & Mosley
 Fnd. 1/2" Pipe in Thimble



Cargill Addition

