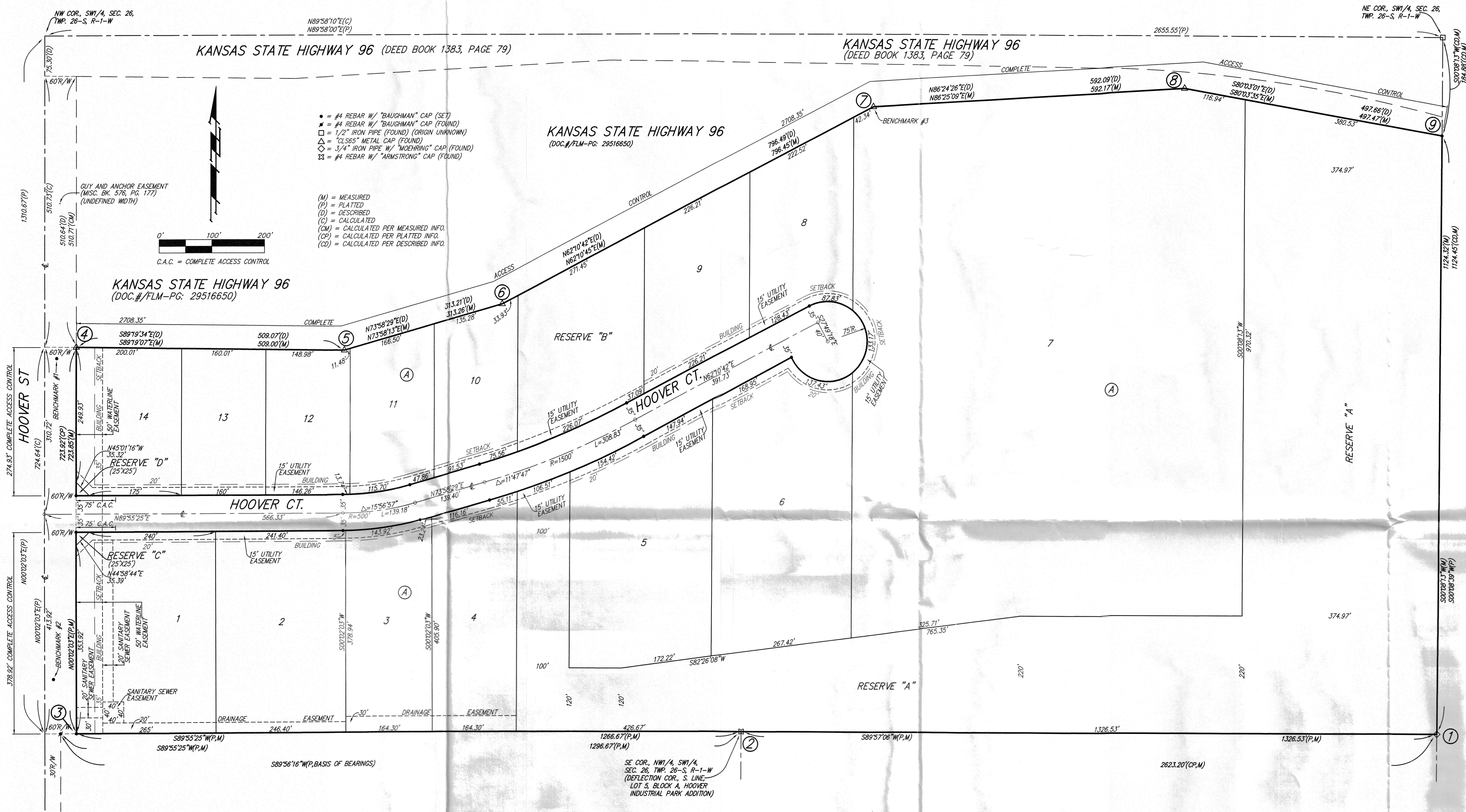


HOOVER INDUSTRIAL PARK 2ND ADDITION

WICHITA, SEDGWICK COUNTY, KANSAS



- = #4 REBAR W/ "BAUGHMAN" CAP (SET)
- = #4 REBAR W/ "BAUGHMAN" CAP (FOUND)
- = 1/2" IRON PIPE (FOUND) (ORIGIN UNKNOWN)
- △ = "CLSES" METAL CAP (FOUND)
- = 3/4" IRON PIPE W/ "MOCHIRING" CAP (FOUND)
- ⊗ = #4 REBAR W/ "ARMSTRONG" CAP (FOUND)

(M) = MEASURED
 (P) = PLATTED
 (D) = DESCRIBED
 (C) = CALCULATED
 (CM) = CALCULATED PER MEASURED INFO.
 (CP) = CALCULATED PER PLATTED INFO.
 (CD) = CALCULATED PER DESCRIBED INFO.

C.A.C. = COMPLETE ACCESS CONTROL

| LOT | BLOCK | ELEVATION |
|------------|-------|-----------|
| 4-7, 9, 10 | A | 1331.8 |

BENCHMARK #1 - CHISELED SQUARE ON TOP OF CURB - SOUTHEAST CORNER OF INTERSECTION OF K-96 HIGHWAY ON-RAMP AND HOOVER ST., 21.0' S. & 37.2' W. OF NORTHWEST CORNER OF LOT 14, BLOCK A. ELEV. = 1334.65 NAVD88

BENCHMARK #2 - P-K NAIL IN EAST FOG LINE OF HOOVER ST. PAVEMENT, 102.8' N. & 43.4' W. OF SOUTHWEST CORNER OF LOT 1, BLOCK A. ELEV. = 1333.65 NAVD88

BENCHMARK #3 - TOP OF "CLSES" METAL CAP MONUMENTING WESTERLY DEFLECTION CORNER IN THE NORTH LINE OF LOT 7, BLOCK A, SAID DEFLECTION CORNER BEING N62°10'45"E, 42.34' FROM THE NORTHWEST CORNER OF SAID LOT 7. ELEV. = 1331.43 NAVD88

This plat of "HOOVER INDUSTRIAL PARK 2ND ADDITION", Wichita, Sedgwick County, Kansas has been submitted to and approved by the Wichita-Sedgwick County Metropolitan Area Planning Commission, Wichita, Kansas, Dated this _____ day of _____, 2017. Wichita-Sedgwick County Metropolitan Area Planning Commission

Joseph A. Johnson, Chairman
 Dale Miller, Secretary

This plat approved and all dedications shown hereon accepted by the City Council of the City of Wichita, Kansas, this _____ day of _____, 2017.

Jeff Langwell, Mayor, City of Wichita
 Karen Sublett, City Clerk

Reviewed in accordance with K.S.A. 58-2005 on this _____ day of _____, 2017.

Tricia L. Robello, P.S. #1246, Deputy Surveyor, Sedgwick County, Kansas
 Kelly B. Arnold, County Clerk

State of Kansas) SS This is to certify that this plat has been filed for record in the office of the Register of Deeds, this _____ day of _____, 2017 at _____ o'clock _____ M, and is duly recorded.

Tonya Buckingham, Register of Deeds
 Judy J. Paget, Deputy

State of Kansas) SS The foregoing instrument acknowledged before me, this _____ day of _____, 2017, by Joseph J. Hemmelgarn, Sole Member/Manager of Big Bang Real Estate LLC, a Kansas limited liability company, 1/a Big Bang Money, L.L.C., a Kansas limited liability company, on behalf of the limited liability company.

Joseph J. Hemmelgarn, Sole Member/Manager
 Notary Public

State of Kansas) SS We, Baughman Company, P.A., Surveyors in aforesaid county and state do hereby certify that we have surveyed and platted "HOOVER INDUSTRIAL PARK 2ND ADDITION", Wichita, Sedgwick County, Kansas and that the accompanying plat is a true and correct exhibit of the property surveyed, described as and being a replat of all of Lots 1, 2, 3, 4, 5, 6, 7, and 8, Block A, TOGETHER with all of Lots 1, 2, 3, 4, 5, 6, 7, 8, 9, 10, 11, 12, 13, 14, and 15, Block B, and TOGETHER with all of 40th Street North, all as platted and dedicated in Hoover Industrial Park Addition, Sedgwick County, Kansas, TOGETHER with Lots 9, 10, 11, 12, 13, 14, 15, and 16, in said Block A, TOGETHER with Lots 16, 17, 18, 19, and 20, in said Block B, TOGETHER with Reserve "A" as platted in said Hoover Industrial Park Addition, and TOGETHER with 41st Street North as dedicated in said Hoover Industrial Park Addition, EXCEPT that part of said Lots 9, 10, 11, 12, 13, 14, 15, and 16, in said Block A, and EXCEPT that part of said Lots 16, 17, 18, 19, and 20, in said Block B, and except that part of said Reserve "A", and EXCEPT that part of said 41st Street North lying within and being coincident with the following described tract of land as dedicated in the Right of Way Dedication recorded in DOC.#/FLM-PG: 29516630 and described as follows: Beginning at the northwest corner of Lot 16, Block A, in said Hoover Industrial Park Addition; thence S00°02'03"W along the west line of Lot 16 in said Block A, along the west line of 41st St. N., as dedicated in said Hoover Industrial Park Addition, and along the west line of Lot 20, Block B, in said Hoover Industrial Park Addition, 510.64 feet; thence S89°19'34"E, 509.07 feet; thence N73°58'29"E, 313.21 feet; thence N62°10'42"E, 796.49 feet; thence N86°24'26"E, 592.09 feet; thence S80°03'01"E, 497.66 feet to a point on the east line of Reserve "A" in said Hoover Industrial Park Addition; thence N00°08'39"E along the east line of said Reserve "A", 35.67 feet to the northeast corner of said Reserve "A"; thence westerly along the north line of said Reserve "A" and along the north line of Lot 9 in said Block A, being a curve to the left, having a central angle of 13°55'32" and a radius of 2745.37 feet, an arc distance of 667.26 feet, (having a chord length of 665.62 feet bearing N82°24'06"W), to the end of said curve in the north line of said Lot 9; thence N89°18'00"W along the north line of said Lot 9 and Lots 10, 11, 12, and 13 in said Block A, 920.70 feet to a deflection corner in the north line of said Lot 13; thence S86°53'00"W along the north line of said Lot 13, and Lots 14 and 15 in said Block A, 601.30 feet to a deflection corner in the north line of said Lot 15; thence N89°18'00"W along the north line of said Lots 15 and 16, 414.60 feet to the point of beginning.

Existing public easements, building setbacks, access controls, and dedications, if any, being vacated by virtue of K.S.A. 12-512b, as amended.

All being situated in the Southwest Quarter of Section 26, Township 26 South, Range 1 West of the Sixth Principal Meridian, Sedgwick County, Kansas.

Baughman Company, P.A.

Michael G. Conroy, Surveyor

Know all men by these presents that we, the undersigned, have caused the land in the surveyors certificate to be platted into Lots, a Block, Reserves, and a Street to be known as "HOOVER INDUSTRIAL PARK 2ND ADDITION", Wichita, Sedgwick County, Kansas. The utility easements are hereby granted as indicated for the construction and maintenance of all public utilities. The drainage easements are hereby granted as indicated for drainage purposes. The sanitary sewer easements are hereby granted as indicated for the construction and maintenance of a sanitary sewer system and related appurtenances. The waterline easement is hereby granted as indicated for the construction and maintenance of water lines and related appurtenances. No signs, light poles, private drainage systems, masonry trash enclosures or other structures shall be located within public utility easements unless permitted by the Public Works Department of the appropriate governing body. The street is hereby dedicated to and for the use of the public. Reserve "A" is reserved for open space, lakes, landscaping, off-site signs, billboards and related appurtenances, drainage purposes, and utilities as confined to easement. Reserve "B" is reserved for open space, lakes, drainage purposes, and utilities as confined to easement. Reserves "C" and "D" are reserved for open space, landscaping, entry monuments, signage, and waterlines and related appurtenances as confined to easement. Reserves "A", "B", "C", and "D" shall be owned and maintained by the lot owners association for the addition. Access controls shall be as depicted on the face of the plat and are hereby granted to the City of Wichita, Kansas. The Minimum Building Pad Elevations for the lowest opening to the structures shall be as indicated on the face of the plat.

Big Bang Real Estate LLC, a Kansas limited liability company, 1/a Big Bang Money, L.L.C., a Kansas limited liability company.

Joseph J. Hemmelgarn, Sole Member/Manager