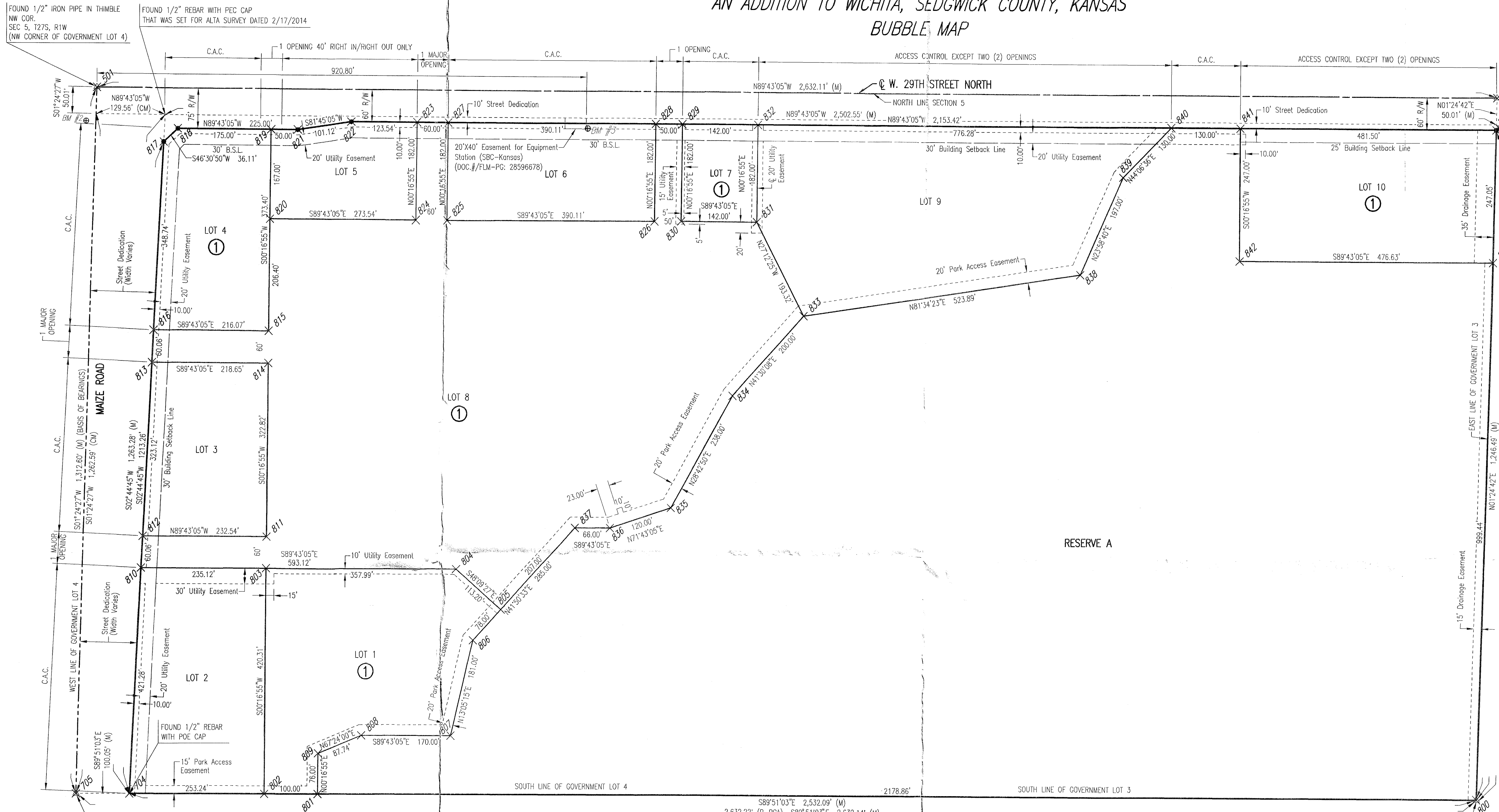


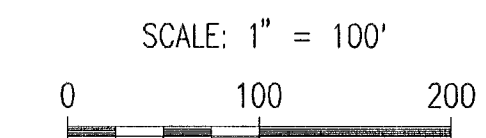
FINAL TRACING REC'D 8.12.15

# CADILLAC LAKE

AN ADDITION TO WICHITA, SEDGWICK COUNTY, KANSAS  
BUBBLE MAP



FOUND 1/2" IRON PIPE IN THIMBLE  
NE COR. NW 1/4,  
SEC 5, T27S, R1W  
(NE CORNER OF GOVERNMENT LOT 3)



- LEGEND**
- SET 1/2" REBAR W/PEC CAP
  - △ SECTION CORNER
  - M MEASURED
  - CM CALCULATED FROM MEASURED
  - P-PCA PLATTED MEASUREMENT FROM PEARSON COMMERCIAL ADDITION
  - C.A.C. COMPLETE ACCESS CONTROL

- BENCH MARK LIST**
- BM #1 - CHISELED SQUARE ON TOP OF CURB, SOUTH SIDE OF DRIVE ENTRANCE TO NORTHEAST CORNER OF TARGET PARKING LOT AND SOUTHWEST OF SOUTHWEST CORNER OF GOVERNMENT LOT 4, SEC 5-27-1W. ELEV.=1352.44 (NAVD88)
  - BM #2 - CHISELED SQUARE AT SOUTHEAST CORNER OF SOUTH HEADWALL FOR RCBC UNDER 29TH STREET, WEST OF MAIZE MAZE ROAD (NOT THE CHISELED + AT THE SOUTHWEST CORNER OF SAME HEADWALL). ELEV.= 1353.32 (NAVD88)
  - BM #3 - CHISELED SQUARE ON TOP OF RETAINING WALL AT SOUTHEAST CORNER OF CONCRETE PAD FOR ELECTRIC TRANSFORMER #10105 ON SOUTH SIDE OF 29TH STREET AND 800 FEET EAST OF BIKE PATH ON EAST SIDE OF MAIZE ROAD. ELEV.= 1352.01 (NAVD88)

THIS PLAT OF CADILLAC LAKE HAS BEEN SUBMITTED TO AND APPROVED BY THE WICHITA-SEDGWICK COUNTY METROPOLITAN AREA PLANNING COMMISSION, WICHITA, KANSAS, APPROVED THE \_\_\_\_\_ DAY OF \_\_\_\_\_, 2015.

\_\_\_\_\_, CHAIRMAN  
MATTHEW J. GOOLSBY

\_\_\_\_\_, INTERIM SECRETARY  
W. DAVID BARBER

REVIEWED IN ACCORDANCE WITH K.S.A. 58-2005 ON THIS \_\_\_\_\_ DAY OF \_\_\_\_\_, 2015.

TRICIA L. ROBELLO, LS #1246  
DEPUTY COUNTY SURVEYOR  
SEDGWICK COUNTY KANSAS

THIS PLAT IS APPROVED AND ALL DEDICATIONS SHOWN HEREON ACCEPTED BY THE CITY COUNCIL OF THE CITY OF WICHITA, KANSAS, THIS \_\_\_\_\_ DAY OF \_\_\_\_\_, 2015.

\_\_\_\_\_, MAYOR  
JEFF LONGWELL

\_\_\_\_\_, CITY CLERK  
KAREN SUBLETT

ENTERED ON TRANSFER RECORD THIS \_\_\_\_\_ DAY OF \_\_\_\_\_, 2015.

\_\_\_\_\_, COUNTY CLERK  
KELLY ARNOLD

THIS IS TO CERTIFY THAT THIS INSTRUMENT WAS FILED FOR RECORD IN THE REGISTER OF DEEDS OFFICE AT \_\_\_\_\_ M., ON THE \_\_\_\_\_ DAY OF \_\_\_\_\_, 2015.

\_\_\_\_\_, REGISTER OF DEEDS  
BILL MEEK

\_\_\_\_\_, DEPUTY  
TONYA BUCKINGHAM

STATE OF KANSAS )  
                          ) SS  
COUNTY OF SEDGWICK )

WE, PROFESSIONAL ENGINEERING CONSULTANTS, P.A., ENGINEERS AND SURVEYORS IN AFORESAID STATE AND COUNTY, DO HEREBY CERTIFY ON THIS \_\_\_\_\_ DAY OF \_\_\_\_\_, 2015, THAT WE HAVE SURVEYED AND PLATTED CADILLAC LAKE, AN ADDITION TO WICHITA, SEDGWICK COUNTY, KANSAS, INTO LOTS, STREETS, A BLOCK, AND A RESERVE, DESCRIBED AS FOLLOWS:

**LEGAL DESCRIPTION:**  
GOVERNMENT LOTS 3 AND 4 IN THE NORTHWEST QUARTER OF SECTION 5, TOWNSHIP 27 SOUTH, RANGE 1 WEST OF THE 6TH P.M., SEDGWICK COUNTY, KANSAS, EXCEPT THE NORTH 50 FEET THEREOF.

ALL PUBLIC EASEMENTS LYING WITHIN ABOVE DESCRIBED TRACT OF LAND ARE HEREBY VACATED AND REPLATTED BY VIRTUE OF K.S.A. 12-5126, AS AMENDED.

ERNEST CANTU JR., P.S. NO. 1407  
PROFESSIONAL ENGINEERING CONSULTANTS, P.A.

THIS ADDITION IS SUBJECT TO THE CONDITIONS OF THE CADILLAC LAKE COMMUNITY UNIT PLAN (CUP2015-00005, DP-336).

THE PARK ACCESS EASEMENT AS SHOWN FOR CITY PARKS AND RECREATION DEPARTMENT IS HEREBY GRANTED.

UTILITY EASEMENTS AS SHOWN FOR THE CONSTRUCTION AND MAINTENANCE OF PUBLIC UTILITIES ARE HEREBY GRANTED.

DRAINAGE EASEMENTS AS SHOWN FOR THE CONSTRUCTION AND MAINTENANCE OF DRAINAGE IMPROVEMENTS ARE HEREBY GRANTED.

ALL ABUTTERS' RIGHT OF ACCESS TO AND FROM MAIZE ROAD AND 29TH STREET NORTH ARE HEREBY GRANTED TO THE APPROPRIATE GOVERNING BODY; PROVIDED HOWEVER THAT LOT 8, BLOCK 1, SHALL HAVE ACCESS TO MAIZE ROAD AT TWO (2) LOCATIONS AND THAT LOTS 4 AND 5, BLOCK 1, SHALL HAVE ONE JOINT ACCESS TO 29TH STREET NORTH (RIGHT IN/RIGHT OUT ONLY); LOT 8 SHALL HAVE ACCESS TO 29TH STREET NORTH AT TWO (2) LOCATIONS; LOT 9, BLOCK 1, SHALL HAVE ACCESS TO 29TH STREET NORTH AT TWO (2) LOCATIONS; AND LOT 10, BLOCK 1, SHALL HAVE ACCESS TO 29TH STREET NORTH AT TWO (2) LOCATIONS. FINAL LOCATIONS TO BE AS APPROVED BY THE CITY ENGINEER. ALL ACCESS OPENINGS ALONG 29TH STREET NORTH ARE TO BE IN ACCORDANCE WITH WICHITA-SEDGWICK COUNTY ACCESS MANAGEMENT STANDARDS.

THE STREET DEDICATIONS ALONG MAIZE ROAD AND 29TH STREET NORTH ARE HEREBY DEDICATED TO AND FOR THE USE OF THE PUBLIC.

A DRAINAGE PLAN HAS BEEN APPROVED FOR THIS PLAT. ALL DRAINAGE EASEMENTS, RIGHTS-OF-WAY OR RESERVES SHALL REMAIN AT ESTABLISHED GRADES AND UNOBSTRUCTED TO ALLOW FOR THE CONVEYANCE OF STORMWATER, UNLESS MODIFIED WITH THE APPROVAL OF THE CITY ENGINEER.

MINIMUM OPENING	ELEVATION (NAVD88)
LOT 1	1352.7
LOTS 1 - 10	1352.7

FEMA FLOODPLAIN AND REGULATORY FLOODWAY BOUNDARIES ARE SUBJECT TO PERIODIC CHANGE, AND SUCH CHANGE MAY AFFECT THE INTENDED LAND USE WITHIN THE SUBDIVISION.

RESERVE A IS HEREBY PLATTED FOR OPEN SPACE, WETLANDS, CITY PARK AND ASSOCIATED AMENITIES, PEDESTRIAN TRAILS, DRAINAGE, STORMWATER DETENTION, LANDSCAPING, AND UTILITIES CONFINED TO EASEMENTS. RESERVE A SHALL BE OWNED AND MAINTAINED BY CADILLAC LAKE, LLC, ITS SUCCESSORS OR ASSIGNS.

KNOW ALL MEN BY THESE PRESENTS THAT WE, THE UNDERSIGNED PROPERTY OWNERS OF THE LAND AS ABOVE SET FORTH IN THE SURVEYOR'S CERTIFICATE, HAVE CAUSED THE LAND TO BE SURVEYED AND PLATTED INTO LOTS, STREETS, A BLOCK, AND A RESERVE, THE SAME TO BE KNOWN AS CADILLAC LAKE, AN ADDITION TO WICHITA, SEDGWICK COUNTY, KANSAS.

OWNER: CADILLAC LAKE, LLC

JERRY JONES, VICE PRESIDENT

STATE OF KANSAS )  
                          ) SS  
COUNTY OF SEDGWICK )

THIS INSTRUMENT WAS ACKNOWLEDGED BEFORE ME ON THIS \_\_\_\_\_ DAY OF \_\_\_\_\_, 2015, BY JERRY JONES, VICE PRESIDENT OF CADILLAC LAKE, LLC.

\_\_\_\_\_, NOTARY PUBLIC

MY APPOINTMENT EXPIRES \_\_\_\_\_

WE, LEGACY BANK, HOLDER OF A MORTGAGE ON THE ABOVE DESCRIBED PROPERTY, DO HEREBY CONSENT TO THE PLATTING OF CADILLAC LAKE, AN ADDITION TO WICHITA, SEDGWICK COUNTY, KANSAS.

STATE OF KANSAS )  
                          ) SS  
COUNTY OF SEDGWICK )

THIS INSTRUMENT WAS ACKNOWLEDGED BEFORE ME ON THIS \_\_\_\_\_ DAY OF \_\_\_\_\_, 2015, BY \_\_\_\_\_, \_\_\_\_\_ OF LEGACY BANK.

\_\_\_\_\_, NOTARY PUBLIC

MY APPOINTMENT EXPIRES \_\_\_\_\_

Plot Scale 1:1 08-12-2015 8:17:24 AM by JLS  
C:\Wichita-Civil\2015\13735\Main\Drawings\13735-Bubble-Map