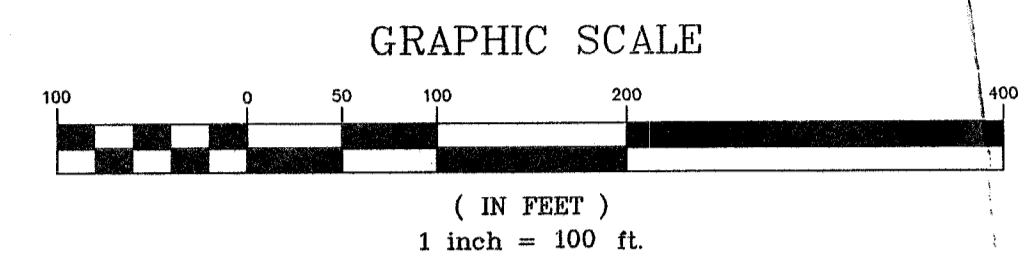
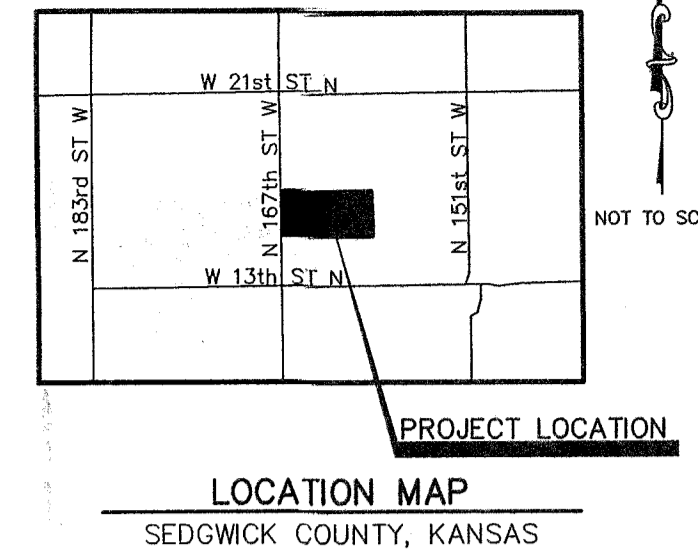


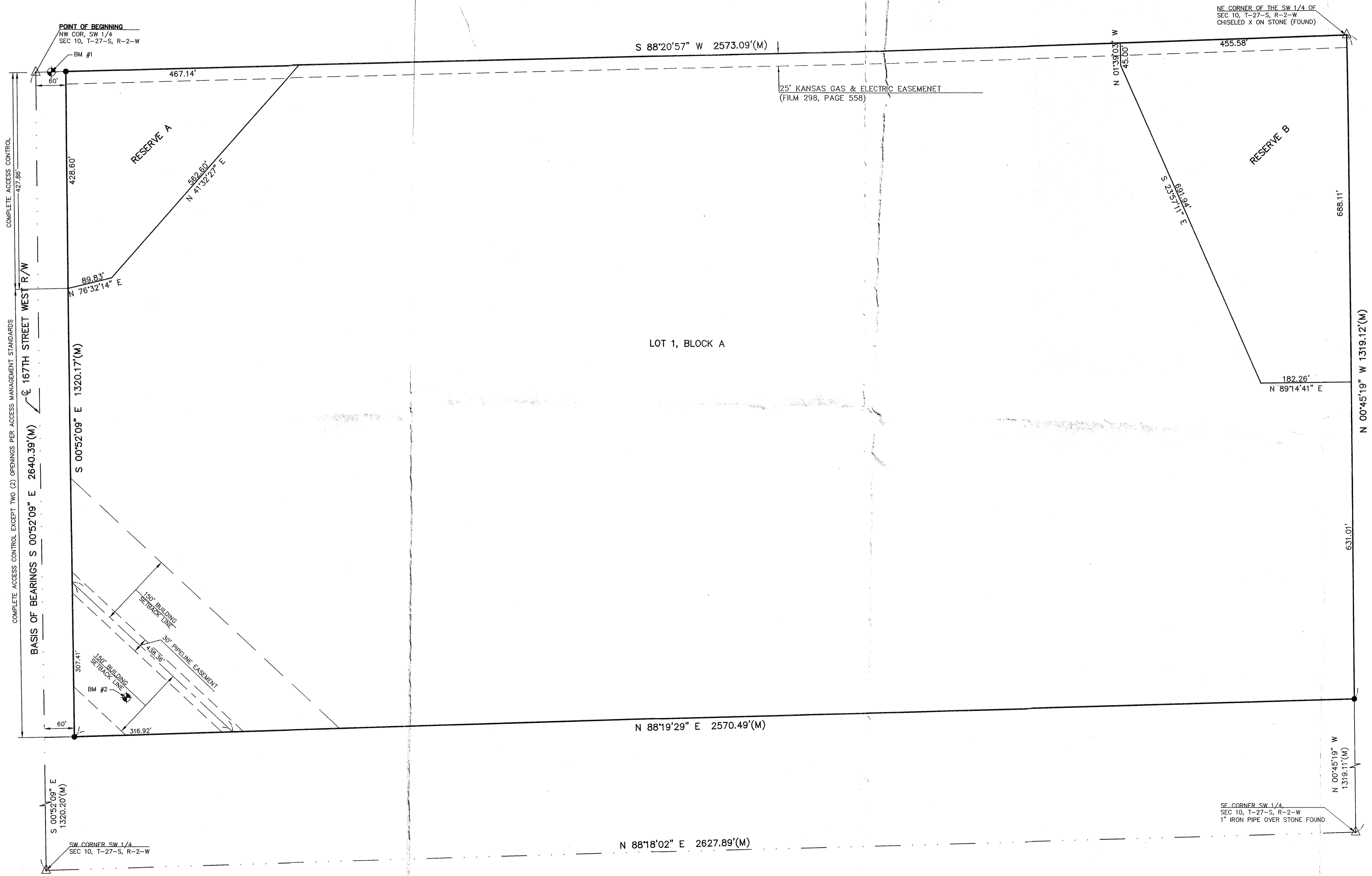
FINAL PLAT OF  
**KALB ADDITION**  
 AN ADDITION TO SEDGWICK COUNTY, KANSAS



**BASIS OF BEARINGS:**  
 S 00°52'09" E ALONG THE WEST LINE OF THE SW 1/4, SECTION 10, TOWNSHIP 27 SOUTH, RANGE 2 WEST OF THE 6th P.M. KANSAS COORDINATE SYSTEM OF 1983 SOUTH ZONE GRID BEARING.

- LEGEND:**
- SECTION CORNER 5/8" REBAR FOUND, ORIGIN UNKNOWN, UNLESS OTHERWISE NOTED
  - 1/2" REBAR W/KVE CLS 20 CAP SET
  - MEASURED
  - BENCH MARK
  - LINE NOT DRAWN TO SCALE

**BENCHMARKS:**  
 VERTICAL DATUM IS NGVD 88.  
 BM #1: BENT 60D NAIL IN HIGHLINE POLE 30 FEET EAST OF THE NW CORNER OF THE SW 1/4 CORNER. ELEV=1384.01  
 BM #2: 1/2" BAR WITH PINK CONTROL POINT CAP 165.08 FEET EAST OF THE WEST LINE AND 75 FEET NORTH OF THE SOUTH LINE. ELEV=1386.84



# KALB ADDITION

## AN ADDITION TO SEDGWICK COUNTY, KANSAS

FINAL TRACING REC'D 2.29.16

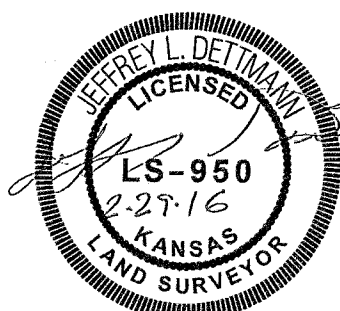
### LAND SURVEYOR'S CERTIFICATION AND DESCRIPTION:

I, JEFFERY L. DETTMANN, BEING A DULY LICENSED AND REGISTERED LAND SURVEYOR IN THE STATE OF KANSAS, HEREBY CERTIFY THAT THIS MAP OR PLAT AND THE SURVEY ON WHICH IT WAS BASED, WAS MADE IN ACCORDANCE WITH THE CURRENT KANSAS MINIMUM STANDARDS FOR BOUNDARY SURVEYS, WAS MADE BY ME OR UNDER MY DIRECT SUPERVISION, AND IS CORRECT TO THE BEST OF MY BELIEF AND ABILITY.

A TRACT OF LAND LEGALLY DESCRIBED AS: THE NORTH HALF OF THE SOUTHWEST QUARTER OF SECTION 10, TOWNSHIP 27 SOUTH, RANGE 2 WEST OF THE 6TH P.M., SEDGWICK COUNTY, KANSAS.

ALL PUBLIC EASEMENTS WITHIN THE ABOVE DESCRIBED PROPERTY ARE HEREBY VACATED AND REPLATTED BY VIRTUE OF K.S.A. 12-512b, AS AMENDED.

DATE OF SURVEY: NOVEMBER 11, 2015



JEFFERY L. DETTMANN

### OWNER'S CERTIFICATE

STATE OF KANSAS }  
COUNTY OF SEDGWICK } SS

THIS IS TO CERTIFY THAT THE UNDERSIGNED OWNERS OF THE LAND DESCRIBED IN THE LAND SURVEYOR'S CERTIFICATE, HAVE CAUSED THE SAME TO BE SURVEYED AND SUBDIVIDED ON THE ACCOMPANYING PLAT INTO A LOT, A BLOCK, STREET AND RESERVES AS KALB ADDITION, AN ADDITION TO SEDGWICK COUNTY, KANSAS; RESERVE "A" IS HEREBY RESERVED FOR KDOT HIGHWAY PURPOSES. RESERVE "B" IS HEREBY RESERVED FOR DRAINAGE AND UTILITY PURPOSES. NO SIGNS, LIGHT POLES, PRIVATE DRAINAGE SYSTEMS, MASONRY TRASH ENCLOSURES OR OTHER STRUCTURES SHALL BE LOCATED WITHIN PUBLIC UTILITY EASEMENTS. RESERVES "A" & "B" SHALL BE OWNED AND MAINTAINED BY THE OWNER(S) OF LOT 1, ITS SUCCESSORS AND ASSIGNS. THAT ALL PUBLIC RIGHTS OF WAY AS DENOTED ON THE PLAT ARE HEREBY DEDICATED TO AND FOR THE USE OF THE PUBLIC FOR THE PURPOSE OF CONSTRUCTION, OPERATING, MAINTAINING AND REPAIRING PUBLIC IMPROVEMENTS. A DRAINAGE PLAN HAS BEEN DEVELOPED FOR THIS PLAT AND ALL DRAINAGE EASEMENTS, RIGHT-OF-WAY, OR RESERVES SHALL REMAIN AT ESTABLISHED GRADES, OR AS MODIFIED WITH THE APPROVAL OF THE ENGINEER FOR THE APPROPRIATE GOVERNING BODY. ACCESS CONTROLS ARE HEREBY GRANTED AS SHOWN ON THE FACE OF THE PLAT. THE LAND CONTAINED HEREIN IS HELD AND SHALL BE CONVEYED SUBJECT TO ANY APPLICABLE RESTRICTIONS, RESERVATIONS AND COVENANTS NOW ON FILE OR HEREAFTER FILED IN THE OFFICE OF THE REGISTER OF DEEDS OF SEDGWICK COUNTY, KANSAS.

DATE SIGNED: \_\_\_\_\_

\_\_\_\_\_, OWNER      \_\_\_\_\_, OWNER  
KENNETH G. KALB      SHANON L. KALB

### NOTARY CERTIFICATE

STATE OF KANSAS }  
COUNTY OF SEDGWICK } SS

THIS FOREGOING INSTRUMENT WAS ACKNOWLEDGED BEFORE ME ON \_\_\_\_\_ DAY OF \_\_\_\_\_, 2016, BY KENNETH G. AND SHANON L. KALB, HUSBAND AND WIFE.

NOTARY PUBLIC \_\_\_\_\_

PRINTED NAME \_\_\_\_\_

MY APPOINTMENT EXPIRES: \_\_\_\_\_

### PLANNING COMMISSION CERTIFICATE

STATE OF KANSAS }  
COUNTY OF SEDGWICK } SS

THIS PLAT WAS APPROVED BY THE WICHITA, SEDGWICK COUNTY METROPOLITAN AREA PLANNING COMMISSION ON \_\_\_\_\_, 2015

SIGNED \_\_\_\_\_, 2016

BY \_\_\_\_\_, CHAIR  
CAROL CHAPMAN NEUGENT

ATTEST: \_\_\_\_\_, SECRETARY  
DALE MILLER

### BOARD OF COUNTY COMMISSIONERS CERTIFICATE

THIS PLAT APPROVED AND ALL DEDICATIONS SHOWN HEREON, IF ANY, ACCEPTED BY THE BOARD OF COUNTY COMMISSIONERS OF SEDGWICK COUNTY, KANSAS, THIS \_\_\_\_\_ DAY OF \_\_\_\_\_, 2016.

\_\_\_\_\_, CHAIRMAN  
RICHARD RANZAU, FOURTH DISTRICT

ATTEST:

\_\_\_\_\_, COUNTY CLERK  
KELLY ARNOLD

### CITY OF WICHITA CERTIFICATE

STATE OF KANSAS }  
COUNTY OF SEDGWICK } SS

THE DEDICATIONS SHOWN ON THIS PLAT, IF ANY, ARE HEREBY ACCEPTED BY THE GOVERNING BODY OF THE CITY OF WICHITA, KANSAS ON \_\_\_\_\_, 2016.

BY \_\_\_\_\_, MAYOR  
JEFF LONGWELL

ATTEST: \_\_\_\_\_, CITY CLERK  
KAREN SUBLETT

### DEPUTY COUNTY SURVEYOR CERTIFICATE

REVIEWED IN ACCORDANCE WITH K.S.A. 58-2005 ON THIS \_\_\_\_\_ DAY OF \_\_\_\_\_, 2016

\_\_\_\_\_, DEPUTY COUNTY SURVEYOR  
TRIGIA L. ROBELLO, LS #1246  
SEDGWICK COUNTY, KANSAS

### TRANSFER RECORD

ENTERED ON TRANSFER RECORD THIS \_\_\_\_\_ DAY OF \_\_\_\_\_, 2016.

\_\_\_\_\_, COUNTY CLERK  
KELLY ARNOLD

### REGISTER OF DEEDS CERTIFICATE

STATE OF KANSAS }  
COUNTY OF SEDGWICK } SS

THIS IS TO CERTIFY THAT THIS INSTRUMENT WAS FILED FOR RECORD IN THE REGISTER OF DEEDS AT \_\_\_\_\_ ON THE \_\_\_\_\_ DAY OF \_\_\_\_\_, 2016 AND IS DULY RECORDED

\_\_\_\_\_, REGISTER OF DEEDS  
TONYA BUCKINGHAM



**KAW VALLEY ENGINEERING, INC.**

200 EMPORIA AVENUE, SUITE 100

WICHITA, KANSAS 67202

PH. (316) 440-4304 | FAX (316) 440-4309

wh@kveng.com | www.kveng.com