

M A A 2ND ADDITION WICHITA, SEDGWICK COUNTY, KANSAS

State of Kansas) SS We, Baughman Company, P.A., Surveyors in
Sedgwick County) aforesaid county and state do hereby certify that we have surveyed and
platted "M A A 2ND ADDITION", Wichita, Sedgwick County, Kansas and
that the accompanying plat is a true and correct exhibit of the property
surveyed, described as and being a replat of all of Lots 1, 2, and 3,
Block A, TOGETHER with all of Lots 1, 2, and 3, Block B, TOGETHER with
all of Reserves "A" and "B", TOGETHER with all of Santa Fe Ave. and
Santa Fe Ct., all as platted and dedicated in M A A Addition, Wichita,
Sedgwick County, Kansas.

PW-ENGINEERING 1-71
Arceli Rosas
FOR YOUR FILES

Know all men by these presents that we,
the undersigned, have caused the land in the surveyors certificate to be
platted into Lots, a Block, and a Street, to be known as "M A A 2ND
ADDITION", Wichita, Sedgwick County, Kansas. The utility easement is
hereby granted as indicated for the construction and maintenance of all
public utilities. The drainage and utility easements are hereby granted as
indicated for drainage purposes and for the construction and maintenance
of all public utilities. No signs, light poles, private drainage systems,
masonry trash enclosures or other structures shall be located within public
utility easements. The street is hereby dedicated to and for the use of
the public. Access controls shall be as depicted on the face of the plat
and are hereby granted to the City of Wichita, Kansas. The Minimum
Building Pad Elevations for the lowest opening to the structures shall be
as indicated on the face of the plat. FEMA floodplain and regulatory
floodway boundaries are subject to periodic change and such change may
affect the intended land use within the subdivision.

State of Kansas) SS The foregoing instrument acknowledged before
me, this 3RD day of MAY, 2016, by Brook J. Phillips, Member
of MAA, L.C., a Kansas limited liability company, on behalf of the limited
liability company.

JUDITH M. TERHUNE
Notary Public - State of Kansas
My Appl. Expires 11-7-17

Judith M. Terhune, Notary Public

My App't. Exp. 11-7-17

State of Kansas) SS The foregoing instrument acknowledged before
me, this 3RD day of MAY, 2016, by Brad A. Phillips, Member
of MAA, L.C., a Kansas limited liability company, on behalf of the limited
liability company.

JUDITH M. TERHUNE
Notary Public - State of Kansas
My Appl. Expires 11-7-17

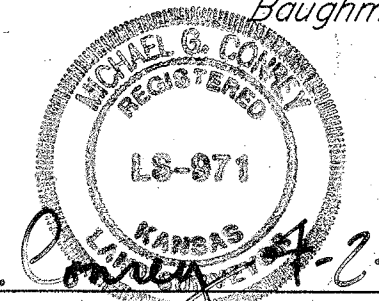
Judith M. Terhune, Notary Public

My App't. Exp. 11-7-17

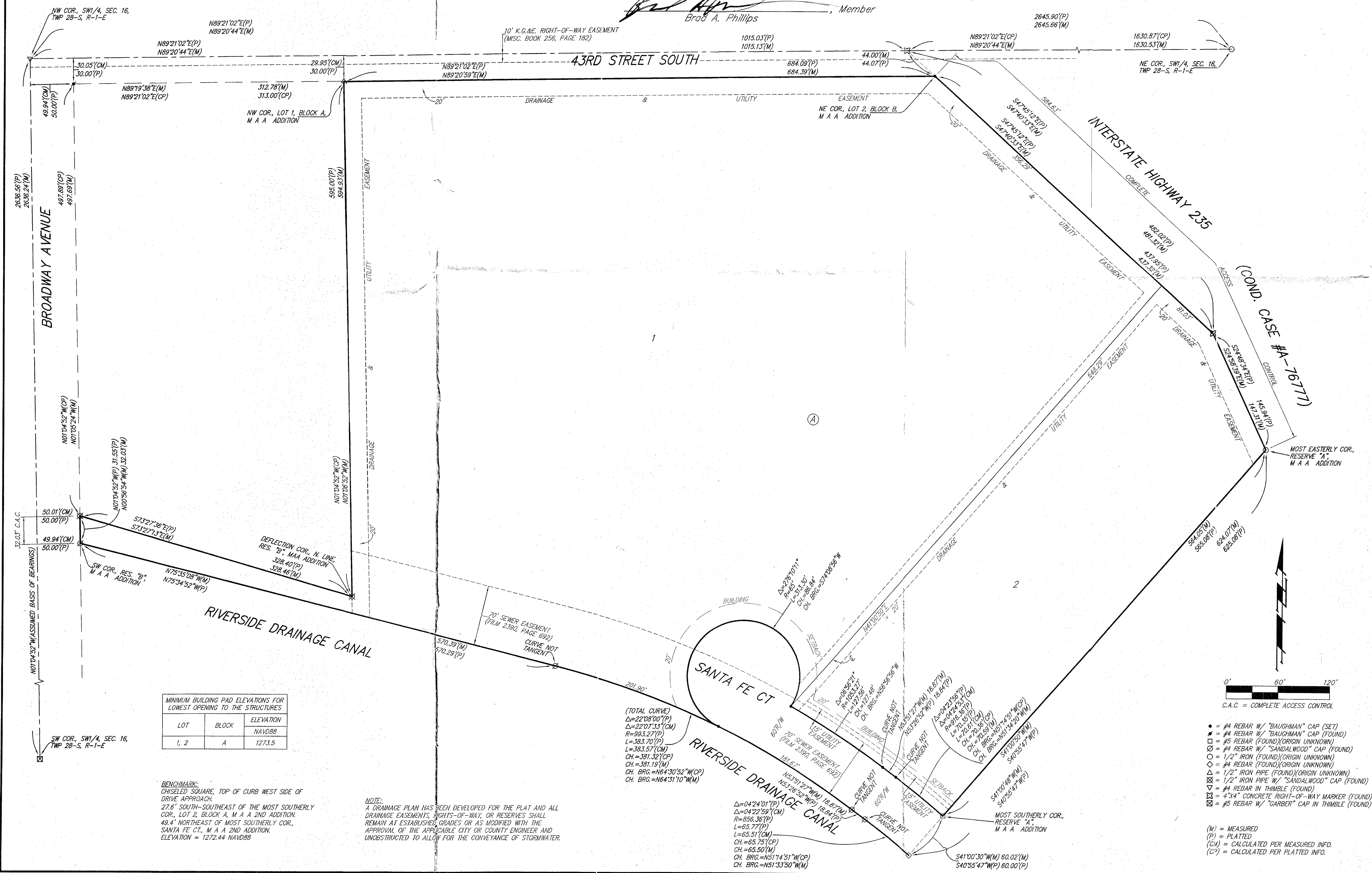
Brook J. Phillips, Member
Brad A. Phillips, Member

Existing public easements, building setbacks,
access controls, and dedications, if any, being
vacated by virtue of K.S.A. 12-512b, as amended.

All being situated in the Southwest Quarter of
Section 16, Township 28 South, Range 1 East of the
Sixth Principal Meridian, Sedgwick County, Kansas.



Michael G. Conrey, Surveyor



MINIMUM BUILDING PAD ELEVATIONS FOR LOWEST OPENING TO THE STRUCTURES

LOT	BLOCK	ELEVATION
1, 2	A	1273.5

BENCHMARK: CHISELED SQUARE, TOP OF CURB WEST SIDE OF DRIVE APPROACH, 276' SOUTH-SOUTHEAST OF THE MOST SOUTHERLY COR., LOT 2, BLOCK A, M A A 2ND ADDITION, 49.4' NORTHEAST OF MOST SOUTHERLY COR., SANTA FE CT., M A A 2ND ADDITION. ELEVATION = 1272.44 NAVD83

NOTE: A DRAINAGE PLAN HAS BEEN DEVELOPED FOR THE PLAT AND ALL DRAINAGE EASEMENTS, RIGHTS-OF-WAY, OR RESERVES SHALL REMAIN AT ESTABLISHED GRADES OR AS MODIFIED WITH THE APPROVAL OF THE APPLICABLE CITY OR COUNTY ENGINEER AND UNOBSERVED TO ALLOW FOR THE CONVEYANCE OF STORMWATER.

This plat of "M A A 2ND ADDITION", Wichita, Sedgwick County, Kansas has been submitted to and approved by the Wichita-Sedgwick County Metropolitan Area Planning Commission, Wichita, Kansas.

Dated this _____ day of _____, 2016.
Wichita-Sedgwick County Metropolitan Area Planning Commission

Carol Chapman Neugent, Chair

Dale Miller, Secretary

This plat approved and all dedications shown hereon accepted by the City Council of the City of Wichita, Kansas, this _____ day of _____, 2016.

Jeff Longwell, Mayor

Karen Sublett, City Clerk

Reviewed in accordance with K.S.A. 58-2005 on this _____ day of _____, 2016.

Tricia L. Robello, L.S. #1246
Deputy County Surveyor
Sedgwick County, Kansas

Entered on transfer record this _____ day of _____, 2016.

Kelly B. Arnold, County Clerk

State of Kansas) SS This is to certify that this plat has been filed for record in the office of the Register of Deeds, this _____ day of _____, 2016 at _____ o'clock _____ M; and is duly recorded.

Tonya Buckingham, Register of Deeds

Judy J. Paget, Deputy

We the undersigned holders of a mortgage on the above described property, do hereby consent to this plat of "M A A 2ND ADDITION", Wichita, Sedgwick County, Kansas.

Simmons First National Bank
Vice President

State of Kansas) SS The foregoing instrument acknowledged before me, this 3RD day of May, 2016, by Joshua Swartz, Vice President of Simmons First National Bank, on behalf of the bank.

Notary Public

My App't. Exp. 3-2-2017

SHARYL NELSON
Notary Public - State of Kansas
My Appl. Expires 3-2-2017

Baughman Company, P.A.
315 Ellis St. Wichita, KS 67211 P 316-262-7271 F 316-262-0149
Baughman ENGINEERING | SURVEYING | PLANNING | LANDSCAPE ARCHITECTURE