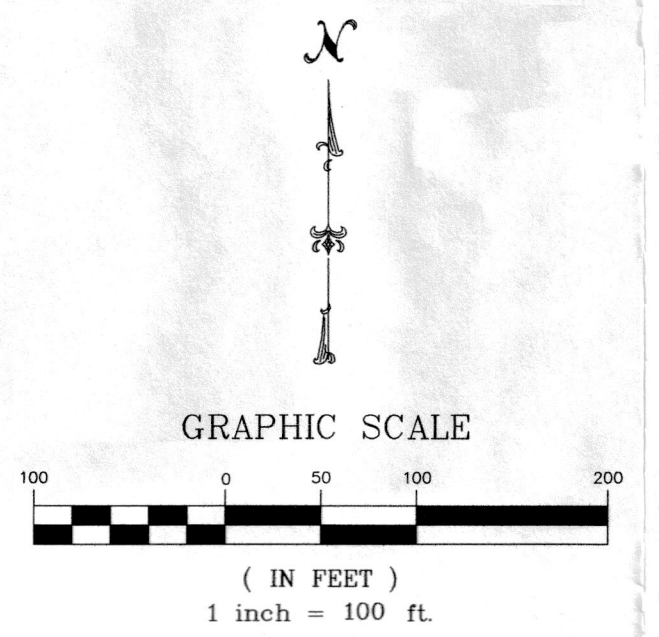
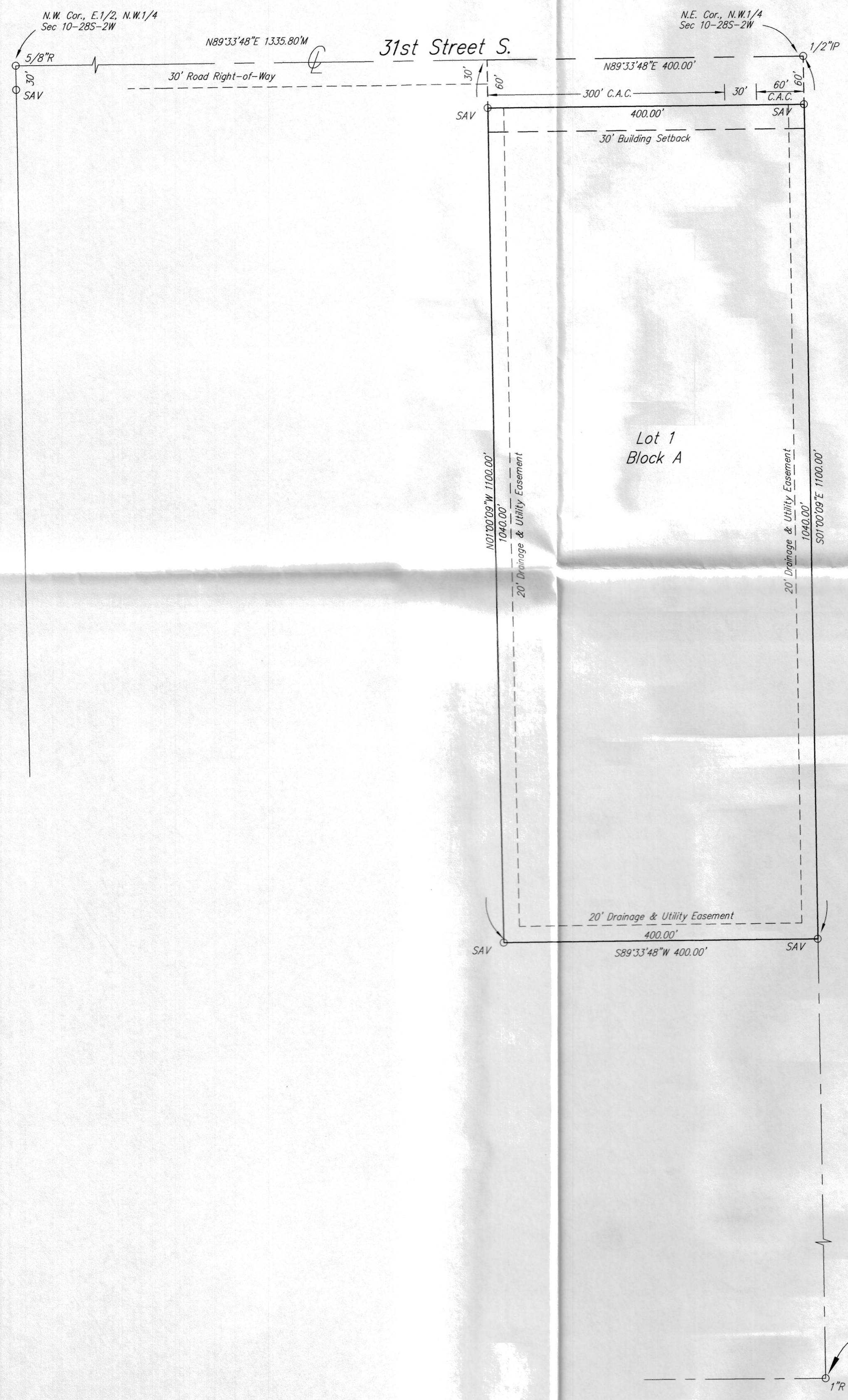


BAALMANN ACRES

SEDGWICK COUNTY, KANSAS



- LEGEND:
M = Measured
D = Described
- 1/2" IP 1/2" IRON PIPE (FOUND)
 - 3/8" R 3/8" REBAR (FOUND)
 - 1" IP 1" IRON PIPE (FOUND)
 - 1" R 1" REBAR (FOUND)
 - STONE LIME STONE W/DRILL HOLE (FOUND)
 - 3/4" CI 3/4" CAPPED IRON NOT LEGIBLE (FOUND)
 - SAV 1/2" REBAR W/SAVOY CAP (SET)

State of Kansas) SS
Sedgwick County)

We, Savoy Company, P.A. Surveyors in aforesaid County and State do hereby certify that, under the supervision of the undersigned, we have surveyed and platted "BAALMANN ACRES", Sedgwick County, Kansas and that the accompany plat is a true and correct exhibit of the property surveyed, described as follows:

That part of the E1/2 of the NW1/4 of Section 10, Twp. 28-S, R-2-W of the 6th P.M., Sedgwick County, Kansas, described as beginning at the N.E. Corner of said NW1/4; thence South along the East line of said NW1/4, 1100 feet; thence West, parallel with the North line of said NW1/4, 400 feet; thence North, parallel with the East line of said NW1/4, 1100 feet to the North line of said NW1/4; thence East along the North line of said NW1/4, 400 feet to the point of beginning.

All Public easements and dedications being vacated by virtue of K.S.A. 12-512(b).

Savoy Company, P.A.
Date _____
Mark A. Savoy PS #788 Surveyor

Reviewed in accordance with K.S.A. 58-2005 on this _____ day of _____, 2017.

Deputy County Surveyor
Sedgwick County Kansas
Tricia L. Robello, PS #1246

Know all men by these presents that We, the undersigned, have caused the land described in the surveyors certificate to be platted into a Lot, Block, and Street to be known as "BAALMANN ACRES", Sedgwick County, Kansas. The street is hereby dedicated to and for the use of the Public. The drainage and utility easements are hereby granted as indicated for the construction and maintenance of all public utilities, and for drainage purposes. No signs, light poles, private drainage systems, masonry trash enclosures or other structures shall be located within public utility easements. A drainage plan has been developed for this plat and all drainage easements, rights-of-way, or reserves shall remain at established grades, or as modified with the approval of the Engineer of the appropriate governing body and unabstracted to allow for the conveyance of stormwater. Access Controls are hereby granted to the appropriate governing body as shown on the face of the plat.

Thomas H. Baalman Bonnie J. Baalman

State of Kansas) SS
Sedgwick County)

The foregoing instrument acknowledged before me, this _____ day of _____, 2017, by Thomas H. Baalman and Bonnie J. Baalman, Husband and Wife.

My App't. Exp. _____ Notary Public

State of Kansas) SS
Sedgwick County)

This plat of "BAALMANN ACRES", Sedgwick County, Kansas has been submitted to and approved by the Wichita-Sedgwick County Metropolitan Area Planning Commission, Wichita, Kansas.

Dated this _____ day of _____, 2017.
Wichita-Sedgwick County Metropolitan Area Planning Commission

Chairman
David W. Foster

Secretary
Dale Miller

This plat approved and all dedications shown hereon, accepted by the City Council of the City of Wichita, Kansas, this _____ day of _____, 2017.

Mayor
Jeff Longwell

City Clerk
Karen Sublett

State of Kansas) SS
Sedgwick County)

The dedications shown on this plat, if any, are hereby accepted by the Board of County Commissioners, Sedgwick County, Kansas, on this _____ day of _____, 2017.

Chairman
David M. Unruh, First District

County Clerk
Kelly B. Arnold

Entered on transfer record this _____ day of _____, 2017.

County Clerk
Kelly B. Arnold

State of Kansas) SS
Sedgwick County)

This is to certify that this plat has been filed for record in the office of the Register of Deeds, this _____ day of _____, 2017, at _____ o'clock _____ M: and is duly recorded.

Register of Deeds
Tonya Buckingham

Deputy
Judy J. Paget



Savoy Company, P.A.
Land Surveyors
PH (316) 265-0005
FAX (316) 265-0275