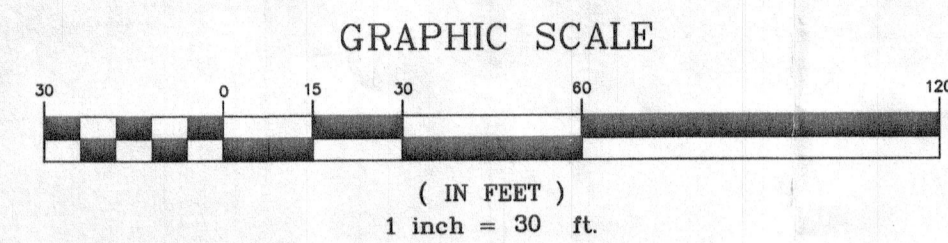
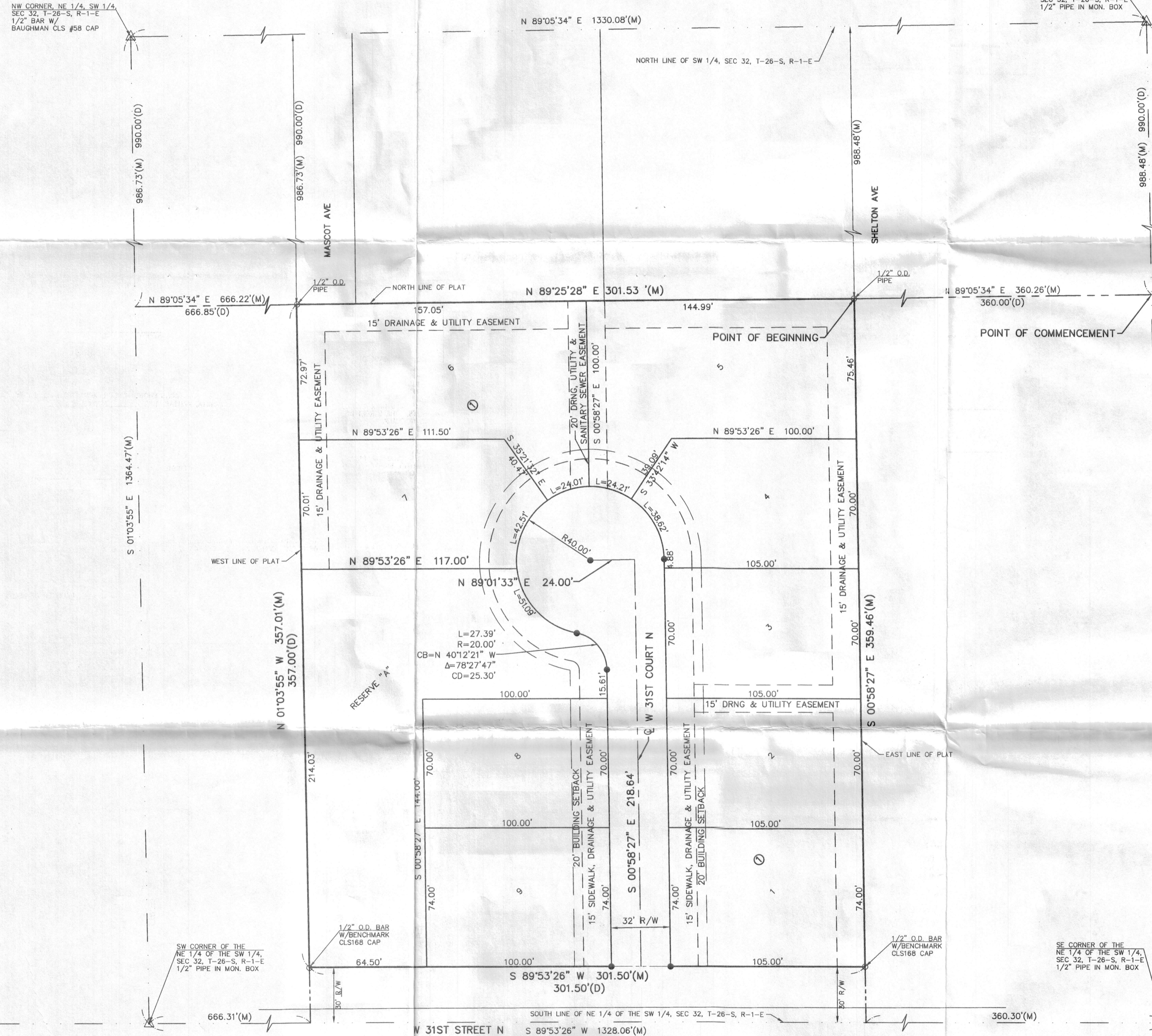


FINAL PLAT OF  
**HOGAN-CHISM ADDITION**  
 WICHITA, SEDGWICK COUNTY, KANSAS

A PORTION OF THE NE 1/4 OF THE SW 1/4, SEC 32, T-26-S, R-1-E,  
 WICHITA, SEDGWICK COUNTY, KANSAS

NW CORNER, NE 1/4, SW 1/4,  
 SEC 32, T-26-S, R-1-E  
 1/2" BAR W/  
 BAUGHMAN CLS #58 CAP

NE CORNER, SW 1/4  
 SEC 32, T-26-S, R-1-E  
 1/2" PIPE IN MON. BOX



- LEGEND**
- △ SECTION CORNER, ORIGIN UNKNOWN UNLESS OTHERWISE NOTED
  - 1/2" REBAR W/KVE CLS #20 CAP SET
  - MONUMENT FOUND, ORIGIN UNKNOWN UNLESS OTHERWISE NOTED
  - (M) DESCRIBED
  - (M) MEASURED
  - LINE NOT DRAWN TO SCALE

**OWNER'S CERTIFICATE**

STATE OF KANSAS, SEDGWICK COUNTY

KNOW ALL MEN BY THESE PRESENTS THAT WE, THE UNDERSIGNED, HAVE CAUSED THE LAND DESCRIBED IN THE SURVEYOR'S CERTIFICATE TO BE PLATTED INTO LOTS, A BLOCK, A RESERVE AND STREET TO BE KNOWN AS "HOGAN-CHISM ADDITION", WICHITA, SEDGWICK COUNTY, KANSAS. RESERVE "A" IS HEREBY RESERVED FOR OPEN SPACE AND PLAYGROUND, DRAINAGE PURPOSES AND FOR THE CONSTRUCTION AND MAINTENANCE OF ALL PUBLIC UTILITIES CONFINED TO EASEMENTS. NO SIGNS, LIGHT POLES, PUBLIC DRAINAGE SYSTEMS, MASONRY TRASH ENCLOSURES OR OTHER STRUCTURES SHALL BE LOCATED WITHIN PUBLIC UTILITY EASEMENTS. THE STREET IS HEREBY DEDICATED TO AND FOR THE USE OF THE PUBLIC. THE SIDEWALK, DRAINAGE AND UTILITY EASEMENTS ARE HEREBY GRANTED AS INDICATED FOR SIDEWALK AND DRAINAGE PURPOSES AND FOR THE CONSTRUCTION AND MAINTENANCE OF ALL PUBLIC UTILITIES. THE DRAINAGE, UTILITY AND SANITARY SEWER EASEMENTS ARE HEREBY GRANTED FOR THE CONSTRUCTION AND MAINTENANCE OF DRAINAGE, UTILITY AND SANITARY SEWER LINES. A DRAINAGE PLAN HAS BEEN DEVELOPED FOR THIS PLAT AND ALL DRAINAGE EASEMENTS, RIGHTS-OF-WAY OR RESERVES SHALL REMAIN AT ESTABLISHED GRADES, OR AS MODIFIED WITH THE APPROVAL OF THE CITY ENGINEER AND UNOBSERVED TO ALLOW FOR THE CONVEYANCE OF STORMWATER. THE MINIMUM PAD ELEVATIONS FOR LOWEST OPENINGS ARE AS SHOWN ON THE FACE OF THE PLAT.

PBP REAL ESTATE, LLC  
 A KANSAS LIMITED LIABILITY COMPANY

*Christopher J. Lee*  
 MANAGING MEMBER  
 CHRISTOPHER J. LEE

**NOTARY CERTIFICATE**

STATE OF KANSAS, COUNTY OF SEDGWICK] SS

THE FOREGOING INSTRUMENT ACKNOWLEDGED BEFORE ME, THIS 24<sup>th</sup> DAY OF June, 2016, BY CHRISTOPHER J. LEE, MANAGING MEMBER OF PBP REAL ESTATE, LLC, A KANSAS LIMITED LIABILITY COMPANY, ON BEHALF OF THE COMPANY.

**TIMOTHY R. AUSTIN**  
 Notary Public - State of Kansas  
 My Exp. Expires 6-16-2018

*Timothy R. Austin*  
 NOTARY PUBLIC

MY APPT. EXP. June 16, 2018

**LAND SURVEYOR'S CERTIFICATE AND DESCRIPTION**

A TRACT IN THE SOUTHWEST QUARTER OF SECTION 32, TOWNSHIP 26 SOUTH, RANGE 1 EAST OF THE 6TH P.M., SEDGWICK COUNTY, KANSAS DESCRIBED AS COMMENCING AT A POINT ON THE EAST LINE OF SAID SOUTHWEST QUARTER; SAID POINT BEING 990 FEET SOUTH OF THE NORTHEAST CORNER OF SAID SOUTHWEST QUARTER; THENCE WEST PARALLEL WITH THE NORTH LINE OF SAID SOUTHWEST QUARTER, 360 FEET FOR A POINT OF BEGINNING; THENCE SOUTH PARALLEL WITH THE EAST LINE OF SAID SOUTHWEST QUARTER TO A POINT 1320 FEET NORTH OF THE SOUTH LINE OF SAID SOUTHWEST QUARTER; THENCE WEST, 301.50 FEET; THENCE NORTH 387 FEET MORE OR LESS TO A POINT 990 FEET SOUTH AND 666.85 FEET EAST OF THE NORTHEAST CORNER OF THE NORTHEAST QUARTER OF SAID SOUTHWEST QUARTER; THENCE EAST TO THE POINT OF BEGINNING.

SAID TRACT CONTAINS: 108,097 SQUARE FEET OR 2.48 ACRES OF LAND, MORE OR LESS.

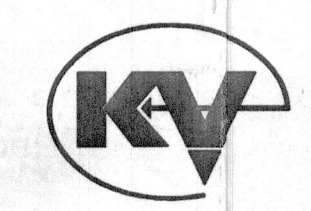
LOWEST OPENING ELEVATION FOR ALL LOTS WITHIN SAID HOGAN-CHISM ADDITION SHALL BE 1321.50 (NAVD88 DATUM)

I, JASON R. LOADER (LS), BEING A DULY LICENSED AND REGISTERED LAND SURVEYOR IN THE STATE OF KANSAS, HEREBY CERTIFY THAT THIS MAP OR PLAT AND THE SURVEY ON WHICH IT WAS BASED, WAS MADE IN ACCORDANCE WITH THE CURRENT KANSAS MINIMUM STANDARDS FOR BOUNDARY SURVEYS WAS MADE BY ME OR UNDER MY DIRECT SUPERVISION, AND IS CORRECT TO THE BEST OF MY BELIEF AND ABILITY.

DATE OF SURVEY: AUG. 13, 2015

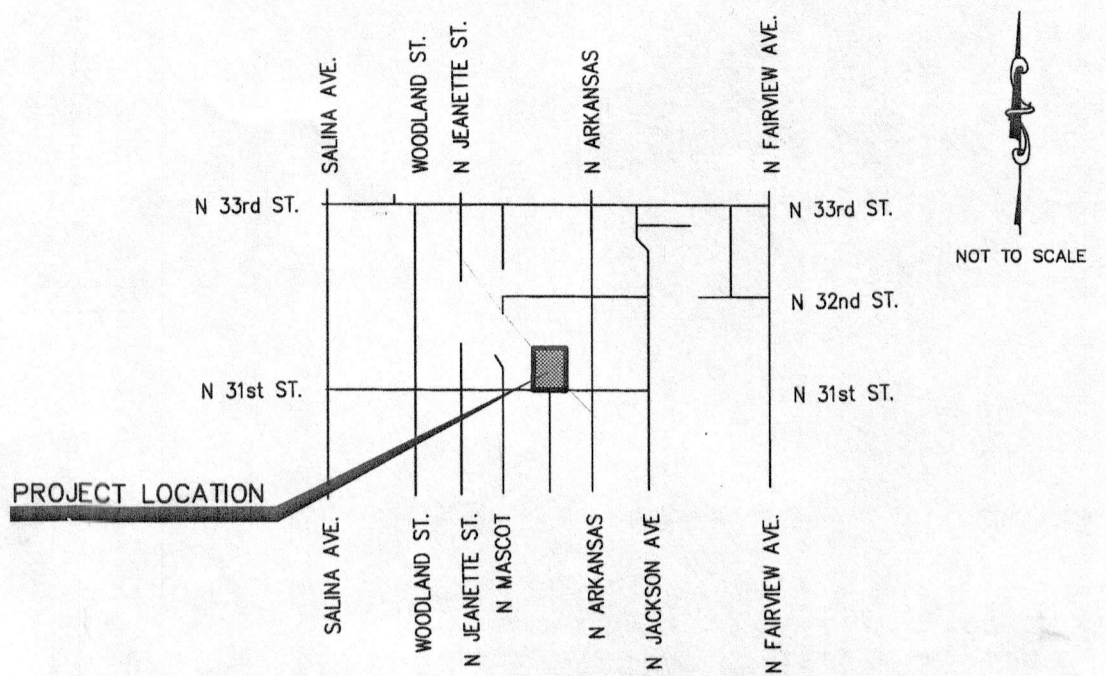


JASON R. LOADER  
 KANSAS RLS NO. 1462  
 loaderj@kveeng.com



**KAW VALLEY ENGINEERING, INC.**  
 200 N. EMPORIA, SUITE 100  
 WICHITA, KANSAS 67202  
 PH. (316) 440-4304 | FAX (316) 440-4309  
 wh@kveeng.com | www.kveeng.com

DATE OF PREPARATION: APRIL 21, 2016 PROJECT NO. G15D0170 SHEET 1 OF 1



**PLANNING COMMISSION CERTIFICATE**

STATE OF KANSAS, SEDGWICK COUNTY] SS

THIS PLAT OF "HOGAN-CHISM ADDITION", WICHITA, SEDGWICK COUNTY, KANSAS, HAS BEEN SUBMITTED TO AND APPROVED BY THE WICHITA-SEGDWICK COUNTY METROPOLITAN AREA PLANNING COMMISSION, WICHITA, SEDGWICK COUNTY, KANSAS, DATED THIS \_\_\_\_\_ DAY OF \_\_\_\_\_, 2016.

WICHITA-SEGDWICK COUNTY METROPOLITAN AREA PLANNING COMMISSION

\_\_\_\_\_  
 CHAIR  
 CAROL CHAPMAN NUEGENT

ATTEST: \_\_\_\_\_  
 DALE MILLER SECRETARY

**GOVERNING BODY CERTIFICATE**

STATE OF KANSAS, SEDGWICK COUNTY] SS

THIS PLAT APPROVED AND ALL DEDICATIONS SHOWN HEREON, ACCEPTED BY THE CITY COUNCIL OF THE CITY OF WICHITA, KANSAS, THIS \_\_\_\_\_ DAY OF \_\_\_\_\_, 2016.

\_\_\_\_\_  
 MAYOR  
 JEFF LONGWELL

ATTEST: \_\_\_\_\_  
 KAREN SUBLETT CITY CLERK

**REGISTER OF DEEDS CERTIFICATE**

STATE OF KANSAS, COUNTY OF SEDGWICK] SS

THIS IS TO CERTIFY THAT THIS INSTRUMENT WAS FILED FOR RECORD IN THE REGISTER OF DEEDS OFFICE AT \_\_\_\_\_ O'CLOCK \_\_\_\_\_ M., ON THE \_\_\_\_\_ DAY OF \_\_\_\_\_, 2016.

\_\_\_\_\_  
 REGISTER OF DEEDS  
 TANYA BUCKINGHAM

\_\_\_\_\_  
 DEPUTY  
 JUDY J. PAGET

**DEPUTY COUNTY SURVEYOR CERTIFICATE**

REVIEWED IN ACCORDANCE WITH K.S.A. 58-2005 ON THIS \_\_\_\_\_ DAY OF \_\_\_\_\_, 2016.

\_\_\_\_\_  
 DEPUTY COUNTY SURVEYOR  
 TRIGIA L. ROBELLO, LS #1246  
 SEDGWICK COUNTY KANSAS

**TRANSFER RECORD**

ENTERED ON TRANSFER RECORD THIS \_\_\_\_\_ DAY OF \_\_\_\_\_, 2016

\_\_\_\_\_  
 COUNTY CLERK  
 KELLY B. ARNOLD

**BASIS OF BEARINGS:**  
 N 89°05'34" E ALONG THE NORTH LINE OF THE SW 1/4, SEC 32, T-26-S, R-1-E, KANSAS COORDINATE SYSTEM OF 1983 SOUTH ZONE GRID BEARING.

**BENCHMARKS:**  
 NAVD88 DATUM  
 BM#1: CHISELED SQUARE SET IN WEST END-RADIUS OF CURB IN SOUTHWEST QUADRANT OF WEST 31ST STREET NORTH & NORTH SHELTON AVE. ELEV=1321.32  
 BM#2: CHISELED SQUARE SET IN EAST END-RADIUS OF CURB IN SE QUADRANT OF WEST 31ST STREET NORTH & NORTH MASCOOT. ELEV=1318.78

FINAL TRACING REC'D 8.19.16

PW-ENGINEERING 1-71  
*Arceli Rosas*  
 FOR YOUR FILES