

FINAL PLAT

BETHANY BAPTIST 1ST ADDITION

NW 1/4 & NE 1/4, Sec. 7, Township 25 South, Range 2 West Sedgwick County, Kansas

State of Kansas) SS
Sedgwick County)

We, Armstrong Land Survey, P.A.,
Surveyors in aforesaid county and state do hereby certify that, under
the supervision of the undersigned, we have surveyed and platted
"BETHANY BAPTIST 1ST ADDITION", to Sedgwick County, Kansas and that
the accompanying plat is a true and correct exhibit of the property
surveyed, described as follows:

That part of the Northeast (NE1/4) quarter of Section 7, Township 25
South, Range 2 East of the 6th p.m., Sedgwick County, Kansas, described
as beginning at the northwest corner thereof; thence N90°00'00"E along the
north line of said NE1/4, 209 feet; thence S0°14'16"W, 209 feet; thence
S90°00'00"W parallel with the north line of said Northeast Quarter, 209 feet
to the west line of said NE1/4; thence N0°14'16"E along said the west line,
209 feet to the point of beginning.

along with:

That part of the Northwest (NW1/4) quarter of Section 7, Township 25
South, Range 2 East of the 6th p.m., Sedgwick County, Kansas, described
as beginning at the northeast corner thereof; thence S0°14'16"W along the
east line of said NW1/4, 209 feet; thence S90°00'00"W parallel with the
north line of said NW1/4, 209 feet; thence N0°14'16"E parallel with the
east line of said NW1/4, 209 feet to the north line of said NW1/4; thence
N90°00'00"E along the north line of said NW1/4, 209 feet to the point of
beginning.

All Public easements and dedications being vacated by
virtue of K.S.A. 12-512(b).

Date: _____ 2013

Donald C. Armstrong, L.S. # 780

Know all men by these presents that We, the undersigned, have caused
the land described in the surveyors certificate to be surveyed and
platted into a Lot, Block and Street to be known as "BETHANY BAPTIST
1ST ADDITION" to Sedgwick County, Kansas. The street is hereby
dedicated to and for the use of the public. Access controls are
hereby granted to the appropriate governing body as indicated on the
face of the plat. A drainage plan has been developed for this plat and
all drainage easements and rights-of-way shall remain at established
grades or modified with the approval of the Engineer of the appropriate
governing body, and unobstructed to allow for the conveyance of
stormwater.

Larry Oyer, Pastor
Bethany Baptist Church

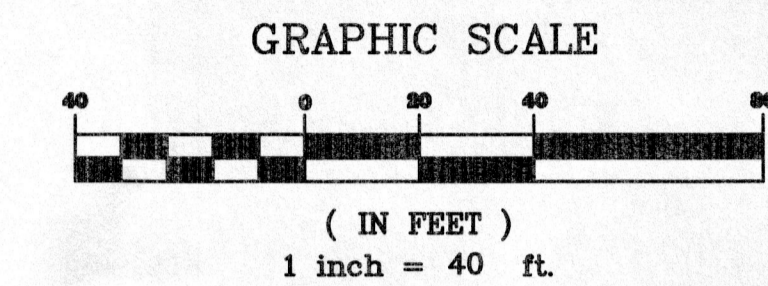
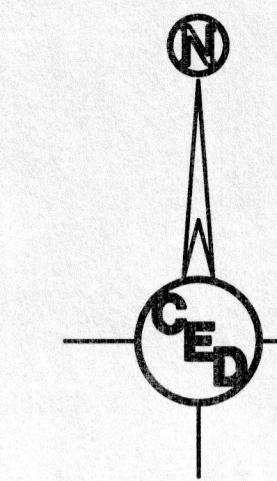
State of Kansas) SS
Sedgwick County)

The foregoing instrument acknowledged before me, this
_____ day of _____, 2013, by _____

My App't. Exp _____ Notary Public

Reviewed in accordance with K.S.A. 58-2005 on this
_____ day of _____, 2013.

Deputy County Surveyor
Sedgwick County, Kansas
Tricia L. Robello, L.S. #1246



This plat of "BETHANY BAPTIST 1ST ADDITION", to Sedgwick
County, Kansas, has been submitted to and approved by the Wichita-Sedgwick
County Metropolitan Area Planning Commission, Wichita, Kansas.
Dated this _____ day of _____, 2013.

Wichita-Sedgwick County Metropolitan Area Planning Commission

_____ Chairman
David Dennis
_____ Secretary
John L. Schlegel

This plat approved and all dedications shown hereon, are
hereby accepted by the Board of County Commissioners, Sedgwick County,
Kansas, this day _____ of _____, 2013.

_____ Chairman
James B. Skelton
_____ County Clerk
Kelly B. Arnold

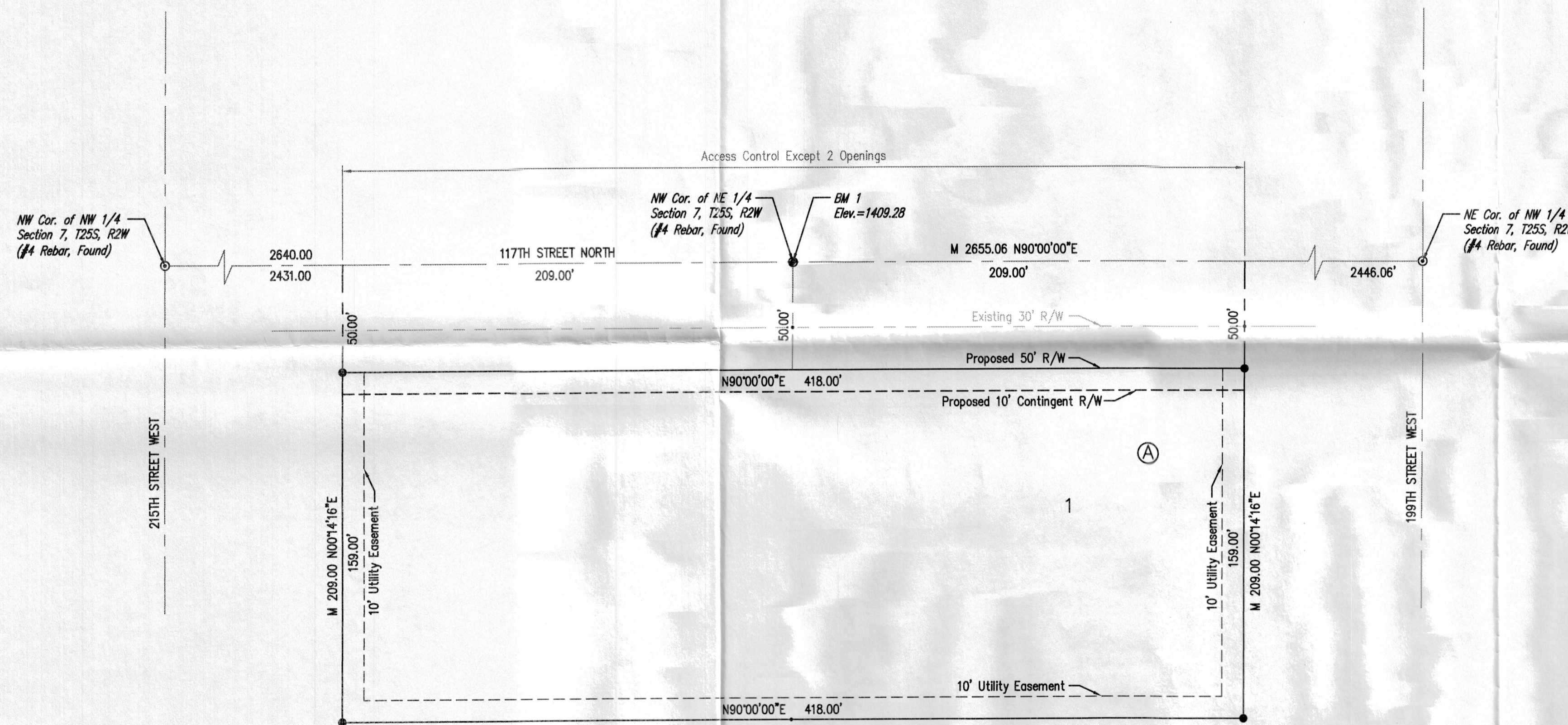
Entered on transfer record this _____ day of
_____, 2013.

_____ County Clerk
Kelly B. Arnold

State of Kansas) SS
Sedgwick County)

This is to certify that this plat has been filed for record
in the office of the Register of Deeds, this _____ day of _____,
2013, at _____ o'clock _____ M: and is duly recorded.

_____ Register of Deeds
Bill Meek
_____ Deputy
Tonya Buckingham



BENCHMARK:
Top of Rebar at the North Quarter Corner
of Section 7, T25S, R2W of the 6th P.M.
Sedgwick County, Kansas
Elev. = 1409.28 NAVD

- - "Armstrong" capped rebar set
- ⊙ - 1/2" iron pipe found
- ⊗ - #4 rebar found
- M - measured distance
- P - plot distance

Closure Computation
Northing Error=-0.0042'
Easting Error=0.0149'
Error of Closure=0.0155'
Accuracy 1:279,950