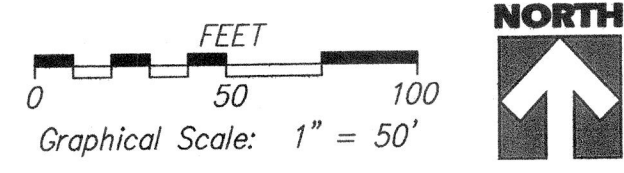


FINAL PLAT

OAKLAWN ELEMENTARY ADDITION

E 1/2, OF THE NW 1/4 OF SEC. 23, TWP. 28 S RANGE 1 E
AN ADDITION TO, SEDGWICK COUNTY, KANSAS



Preparation Date: December 28, 2012

LEGEND:

- △ = Iron Pipe Found
- = 1/2" Rebar Found w/Cap, "LS 1200"
- ⊗ = 1/2" Rebar Found w/Cap, "Moehring"
- ⊙ = 1/2" Rebar to be set, capped "LS 1200"
- (M) = Measured
- (D) = Deeded Measurement
- (CM) = Calculated from Measurements

BENCHMARK:

BM #1 - City of Wichita Benchmark, located on the northwest corner of concrete box for school crossing sign, on the south side of 47th Street S at Clifton Street. (Not shown, outside of survey limits.) Elev.=1270.25

BM #2 (TBM) - Chisled "□" (set), at the West end of hubguard on the south side of southern most driveway into Oaklawn Elementary. Elev.=1270.92

NOTE:

A drainage plan has been developed for the subdivision and all drainage easements, rights of way, or reserves shall remain at the established grades and remain unobstructed to allow for the conveyance of stormwater.

I, the undersigned, a registered land surveyor of the State of Kansas, do hereby certify that the following described tract of land was surveyed on August 21, 2012 and the accompanying final plat prepared and that all the monuments shown herein actually exist and their positions are correctly shown to the best of my knowledge and belief:

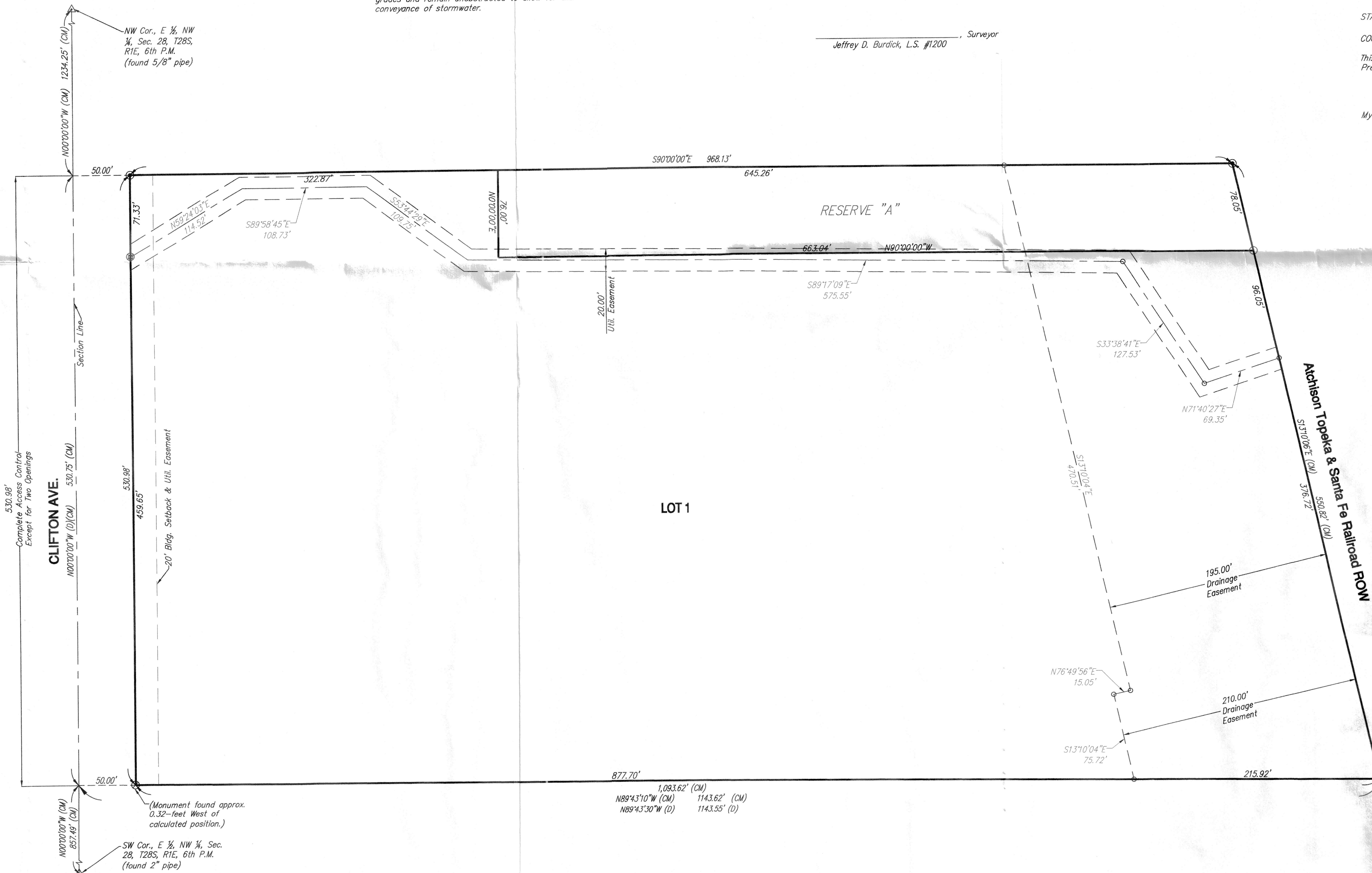
Located in the East Half (E 1/2), of the Northwest Quarter (NW 1/4) of Section 23, Township 28 South, Range 1 East of the 6th P.M., Sedgwick County, Kansas, more particularly described as follows:

Commencing at the Northwest Corner (NW Cor.) of the East Half (E 1/2) of the Northwest Quarter (NW 1/4) of Section 23, Township 28 South, Range 1 East, of the 6th P.M., thence South 00°00'00" West along the West line of said East Half, a distance of 1,234.25 feet; thence South 90°00'00" East a distance of 50.00 feet to the Point of Beginning, thence continuing South 90°00'00" East a distance of 968.13 feet, thence South 13°10'06" East a distance of 530.98 feet to the Point of Beginning.

The plat contains 12.63 acres, more or less.

Existing public easements and dedications being vacated by virtue of K.S.A. 12-512(b).

Date: _____



Jeffrey D. Burdick, L.S. #1200
Surveyor

This is to certify that the undersigned owner(s) of the land described in the Surveyor's Certificate, have caused the same to be surveyed and subdivided on the accompanying plat into a Lot and a Reserve under the name of "Oaklawn Elementary Addition", (an addition to Sedgwick County, Kansas); that all easements as denoted on the plat are hereby dedicated to and for the use of the public for the purpose of constructing, operating, maintaining, and repairing public improvements. Reserve "A" is hereby reserved for open spaces, entry monuments, drainage basins, landscaping, berms, irrigation, lighting, signage, drainage purposes, storm sewers, recreation purposes, and utilities confined to easements. Reserves "A" shall be owned and maintained by the property owner(s) of the addition, its successors and assigns. Further the undersigned owner(s) certify that the land contained herein is held and shall be conveyed subject to any applicable restrictions, reservations, and covenants now on file or hereafter filed in the Office of the Register of Deeds of Sedgwick County, Kansas.

Derby Unified School District No. 260 Board of Education

By: Janet Sprecker
President of USD 260 Board of Education

Date: _____

STATE OF KANSAS)
)SS
COUNTY OF SEDGWICK)

This instrument was acknowledged before me, this _____ day of _____, 20____, by Janet Sprecker, President on behalf of USD 260 Board of Education.

Notary Public

My appointment expires: _____

This plat of "Oaklawn Elementary Addition" has been submitted to and approved by the Wichita-Sedgwick County Metropolitan Area Planning Commission, Wichita, Kansas.

Dated this _____ day of _____, 20____.

Wichita Sedgwick County Metropolitan Area Planning Commission

David Dennis, Chair

Attest:

John L. Schiegel, Secretary

This plat approved and all dedications shown hereon, if any, accepted by the Board of County Commissioners of Sedgwick County, Kansas.

Dated this _____ day of _____, 20____.

Tim R. Norton, Chairman, Second District

Attest:

Kelly B. Arnold, County Clerk

STATE OF KANSAS, SEDGWICK COUNTY)ss

This is to certify that this instrument was filed for record in the Register of Deeds Office, at _____ a.m. - p.m., on the _____ day of _____, 20____.

Bill Meek, Register of Deeds

Attest:

Tonya E. Buckingham, Deputy

STATE OF KANSAS, SEDGWICK COUNTY)ss

Reviewed in accordance with K.S.A. 58-2005 on this _____ day of _____, 20____.

Deputy County Surveyor

Patricia L. Robello, LS #1246
Deputy County Surveyor
Sedgwick County, Kansas