

FINAL PLAT

STOVER ESTATES SEDGWICK COUNTY, KANSAS

State of Kansas) SS
Sedgwick County) SS We, Baughman Company, P.A., Surveyors in aforesaid county and state do hereby certify that we have surveyed and platted "STOVER ESTATES", Sedgwick County, Kansas and that the accompanying plat is a true and correct exhibit of the property surveyed, described as a tract in the North Half of the Southeast Quarter of Section 3, Township 28 South, Range 2 West of the 6th Principal Meridian, Sedgwick County, Kansas described as follows: Beginning at the southeast corner of said North Half, thence S89°23'26"W along the south line of said North Half, 2618.03 feet to the southwest corner of said North Half; thence N03°31'41"E along the west line of said North Half, 316.00 feet; thence N88°55'31"E, 2104.39 feet; thence N56°10'08"E, 214.53 feet; thence N89°23'26"E parallel with the south line of said North Half, 325.03 feet to a point on the east line of said North Half; thence S01°07'16"W along said east line, 450.00 feet to the point of beginning, subject to road rights-of-way of record.

Existing public easements and dedications being vacated by virtue of K.S.A. 12-512b, as amended.

Baughman Company, P.A.

Michael G. Conrey, Surveyor

Know all men by these presents that we, the undersigned, have caused the land in the surveyors certificate to be platted into Lots, a Block, and a Street, to be known as "STOVER ESTATES", Sedgwick County, Kansas. The streets are hereby dedicated to and for the use of the public. Access controls shall be as depicted on the face of the plat and are hereby granted to the appropriate governing body.

Phillip Stover Cyndi Stover

State of Kansas) SS
Sedgwick County) SS The foregoing instrument acknowledged before me, this _____ day of _____, 2014, by Phillip Stover and Cyndi Stover, as husband and wife.

Notary Public

My App't. Exp. _____

This plat of "STOVER ESTATES", Sedgwick County, Kansas has been submitted to and approved by the Wichita-Sedgwick County Metropolitan Area Planning Commission, Wichita, Kansas.

Dated this _____ day of _____, 2014.
Wichita-Sedgwick County Metropolitan Area Planning Commission

Don Klausmeyer, Chair

John L. Schlegel, Secretary

This plat approved and all dedications shown hereon accepted by the Board of Commissioners of Sedgwick County, Kansas, this _____ day of _____, 2014.

David M. Unruh, 1st District, Chairman

Kelly B. Arnold, County Clerk

This plat approved and all dedications shown hereon accepted by the City Council of the City of Wichita, Kansas, this _____ day of _____, 2014.

Carl Brewer, Mayor

Karen Sublett, City Clerk

Reviewed in accordance with K.S.A. 58-2005 on this _____ day of _____, 2014.

Tricia L. Robello, L.S. #1246
Deputy County Surveyor
Sedgwick County, Kansas

Entered on transfer record this _____ day of _____, 2014.

Kelly B. Arnold, County Clerk

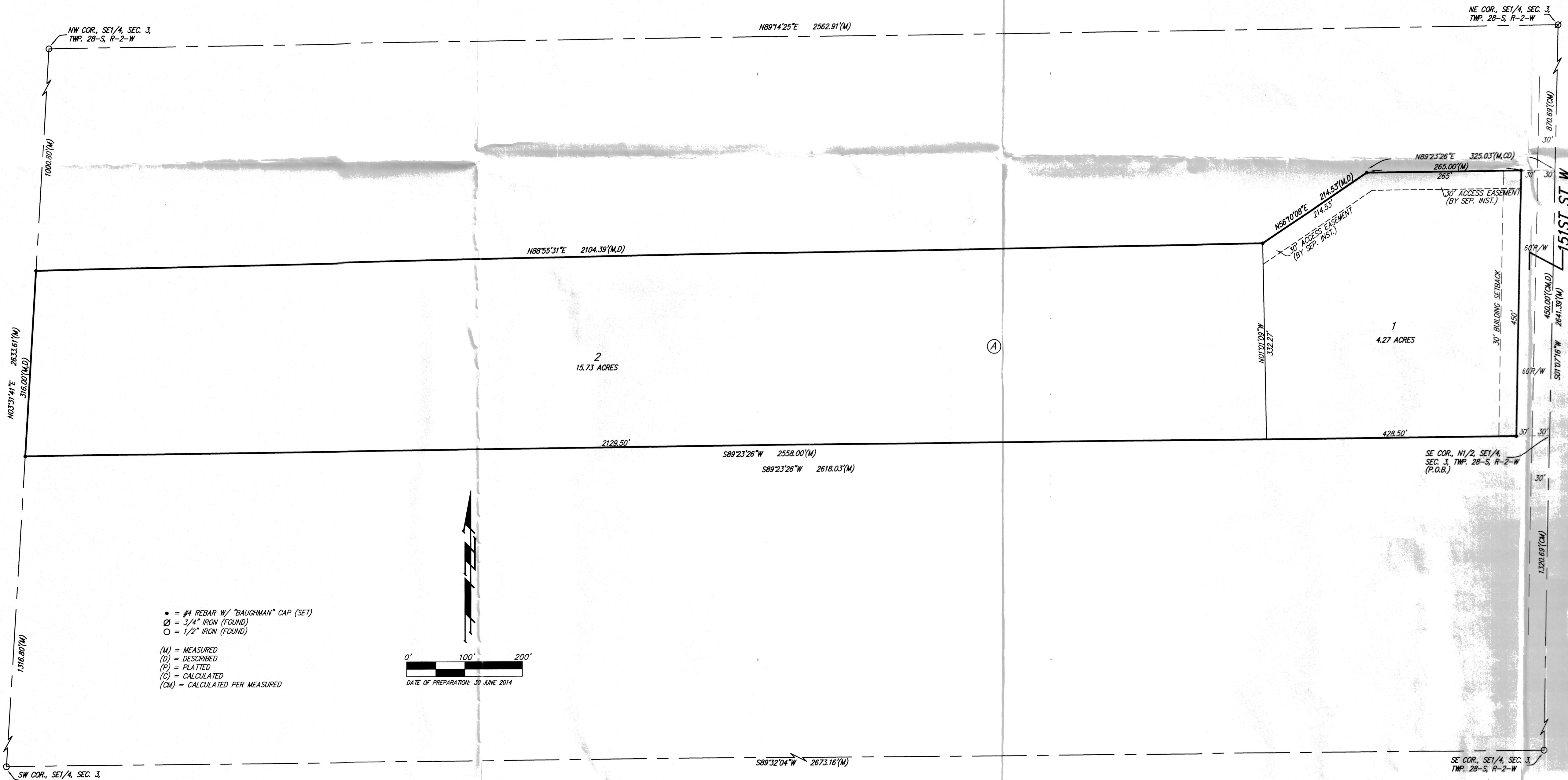
State of Kansas) SS
Sedgwick County) SS This is to certify that this plat has been filed for record in the office of the Register of Deeds, this _____ day of _____, 2014 at _____ o'clock _____ M; and is duly recorded.

Bill Meek, Register of Deeds

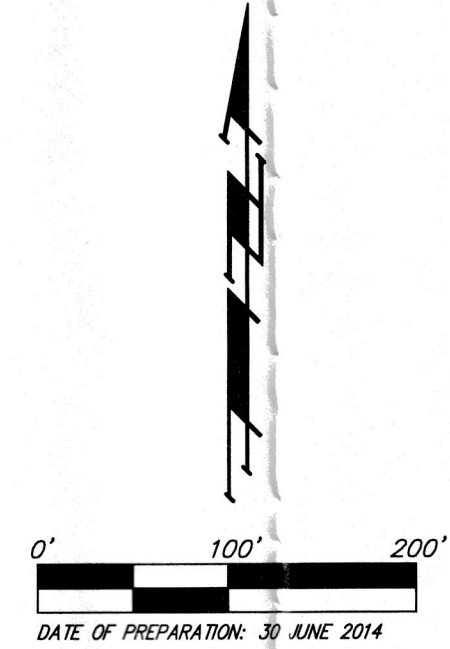
Tonya Buckingham, Deputy

STOVER ESTATES

Baughman Company, P.A.
315 Ellis St., Wichita, KS 67211 P 316-262-7271 F 316-262-0149
Baughman ENGINEERING | SURVEYING | PLANNING | LANDSCAPE ARCHITECTURE
E:\PROJECTS\STOVERESTATES_1404-P040\STOVERESTATES_OSF.DWG\RRK



- = #4 REBAR W/ "BAUGHMAN" CAP (SET)
- ⊙ = 3/4" IRON (FOUND)
- = 1/2" IRON (FOUND)
- (M) = MEASURED
- (D) = DESCRIBED
- (P) = PLATTED
- (C) = CALCULATED
- (CM) = CALCULATED PER MEASURED



NOTE: A drainage plan has been developed for the plat and that all drainage easements, rights-of-way, or reserves shall remain at established grades or as modified with the approval of the applicable City or County Engineer and unobstructed to allow for the conveyance of stormwater.

NOTE: The pipeline described in the blanket easement and recorded in Misc. Bk. 473, Page 58, Sedgwick County Records, is located outside of Lots 1 and Lot 2.