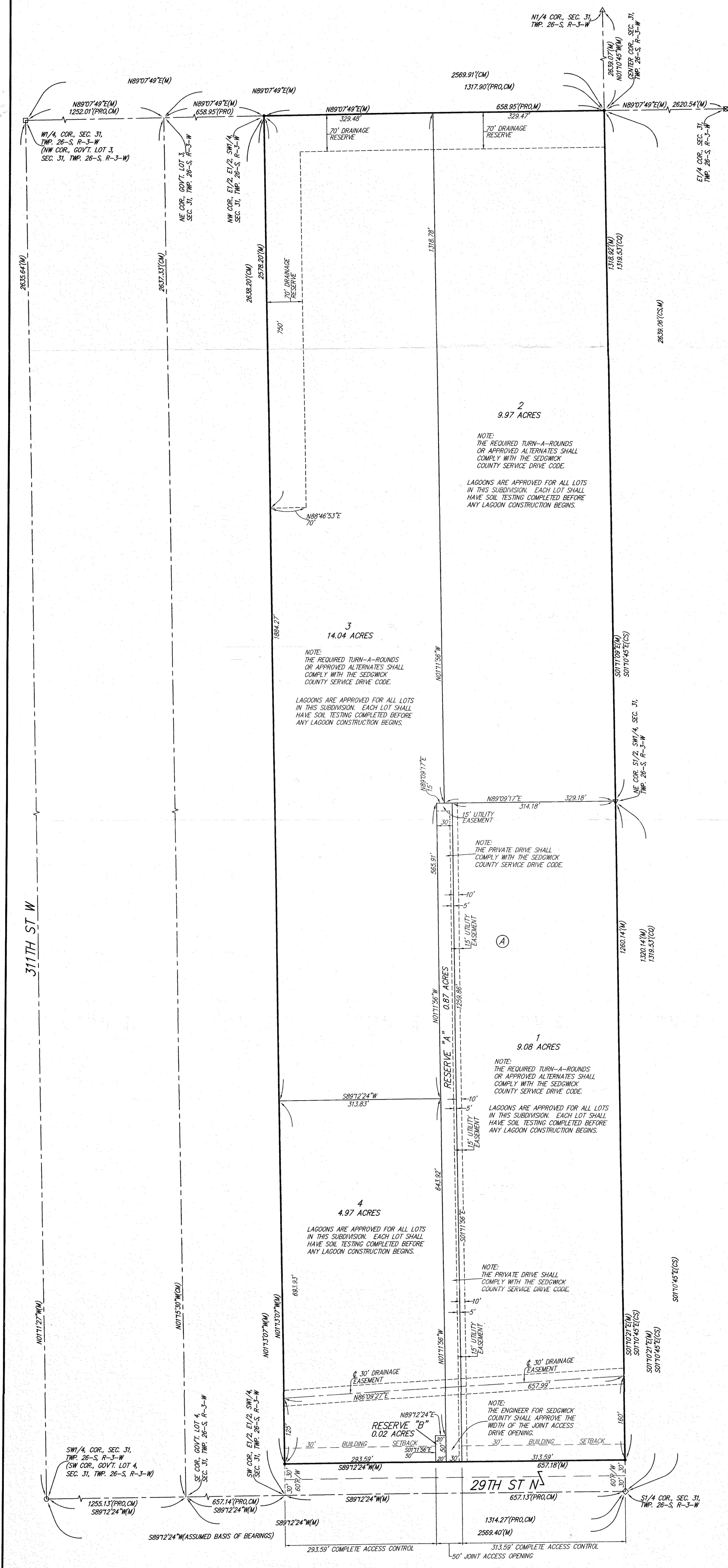


FOR YOUR FILES
FINAL TRACING REC'D 12-27-17

ECK ACRES

AN ADDITION TO SEDGWICK COUNTY, KANSAS



State of Kansas) SS We, Baughman Company, P.A., Surveyors in
Sedgwick County) and state do hereby certify that we have surveyed and
of aforesaid county and state do hereby certify that we have surveyed and
platted "ECK ACRES", an Addition to Sedgwick County, Kansas and that
the accompanying plat is a true and correct exhibit of the property
surveyed, described as follows: The East Half of the East Half of the
Southwest Quarter of Section 31, Township 26 South, Range 3 West of the
6th P.M., Sedgwick County, Kansas.
Existing public easements, building setbacks,
access controls, and dedications, if any, being
vacated by virtue of K.S.A. 12-512b, as amended.
Baughman Company, P.A.

Michael G. Conrad, Surveyor

Know all men by these presents that we, the undersigned, have caused the land in the surveyors certificate to be platted into Lots, a Block, Reserves, and a Street, to be known as "ECK ACRES", an Addition to Sedgwick County, Kansas. The utility easement is hereby granted as indicated for the construction and maintenance of all public utilities. No signs, light poles, private drainage systems, masonry trash enclosures or other structures shall be located within public utility easements unless permitted by the Public Works Department of the appropriate governing body. The drainage easement is hereby reserved for drainage purposes and each portion of said drainage reserve shall be the responsibility of the corresponding owners of Lots 2 and 3, Block A, respectively, until such time as the appropriate governing body elects to assume the responsibility for maintenance and improvements to the drainage. No buildings shall be constructed or placed on or within said drainage reserve, nor shall any fill, change of grade, creation of channel, or any other work be carried on without the permission of the Engineer for said appropriate governing body. The drainage easement is hereby granted as indicated for drainage purposes. Reserve "A" is hereby reserved for landscaping, open space, a private drive, drainage purposes, and utilities as confined to easements. Reserve "B" is hereby reserved for landscaping, open space, a private drive, and drainage purposes. Reserve "A" shall provide access to or from Lots 1, 2, and 3. Reserve "B" shall provide access to or from Lot 4. Reserves "A" and "B" shall be owned and maintained by the current owner, and/or their successors, assigns, and/or a Home Owners Association. Access controls shall be as depicted on the face of the plat and are hereby granted to the appropriate governing body.

Urban M. Eck
Heidi M. Eck
Urban Michael Eck
Heidi Marie Eck

State of Kansas) SS The foregoing instrument acknowledged before me, this 21st day of DECEMBER, 2017, by Urban M. Eck a/k/a Urban Michael Eck and Heidi M. Eck a/k/a Heidi Marie Eck, husband and wife.
JUDITH M. TERHUNE
Notary Public - State of Kansas
My Comm. Expires 11-7-21
Judith M. Terhune, Notary Public
JUDITH M. TERHUNE

We the undersigned holders of a mortgage on the above described property, do hereby consent to this plat of "ECK ACRES", an Addition to Sedgwick County, Kansas.
Garden Plain State Bank
PATRICK F. WALDEN

State of Kansas) SS The foregoing instrument acknowledged before me, this 2nd day of DECEMBER, 2017, by Patrick F. Walden, President/CEO of Garden Plain State Bank, on behalf of the bank.
AMY L. HAMMOND
AMY L. HAMMOND
AMY L. HAMMOND
Notary Public
My Comm. Expires 11/21/21

This plat of "ECK ACRES", an Addition to Sedgwick County, Kansas has been submitted to and approved by the Wichita-Sedgwick County Metropolitan Area Planning Commission, Wichita, Kansas.
Dated this _____ day of _____, 2017.
Wichita-Sedgwick County Metropolitan Area Planning Commission

Joseph A. Johnson, Chairman
Dale Miller, Secretary

This plat approved and all dedications shown hereon accepted by the Board of Commissioners of Sedgwick County, Kansas, this _____ day of _____, 2017.

Dave M. Uhrut, First District
Kelly B. Arnold, County Clerk

Reviewed in accordance with K.S.A. 58-2005 on this _____ day of _____, 2017.

Tricia L. Robella, P.S. #1246
Deputy County Surveyor
Sedgwick County, Kansas

Entered on transfer record this _____ day of _____, 2017.
Kelly B. Arnold, County Clerk

State of Kansas) SS This is to certify that this plat has been filed for record in the office of the Register of Deeds, this _____ day of _____, 2017, at _____ o'clock _____ M., and is duly recorded.
Tonya Buckingham, Register of Deeds
Judy J. Paget, Deputy

NOTE:
A drainage plan has been developed for the plat and all drainage easements, rights-of-way, and reserves shall remain at established grades or as modified with the approval of the applicable City or County Engineer and unobstructed to allow for the conveyance of stormwater.

• = #4 REBAR W/ "BAUGHMAN" CAP (SET)
□ = #5 REBAR OVER STONE (FOUND)
○ = 1/2" IRON PIPE OVER STONE (FOUND)
△ = 5/8" REBAR (FOUND)
◇ = #4 REBAR OVER STONE (FOUND)
▽ = 1/2" IRON PIPE (FOUND)
▽ = STONE (FOUND)
(#4 REBAR E. OF STONE)

(M) = MEASURED
(CM) = CALCULATED FROM MEASURED INFO.
(PRO) = PROPORTIONED MEASUREMENT
(CO) = CALCULATED FROM SUBDIVISION OF QUARTER SECTION
(CS) = CALCULATED FROM SUBDIVISION OF SECTION

0' 100' 200'