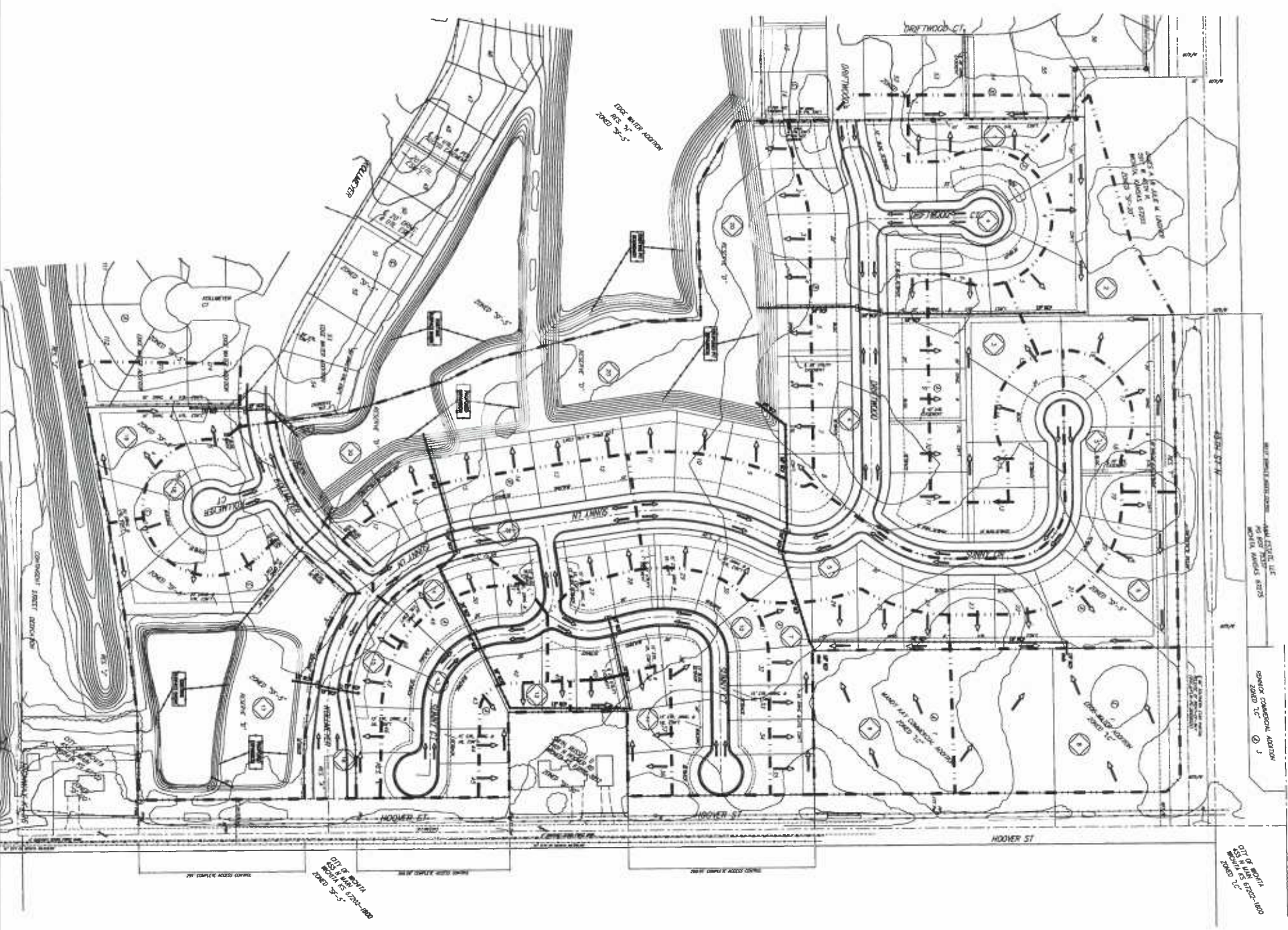


# DRAINAGE PLAN

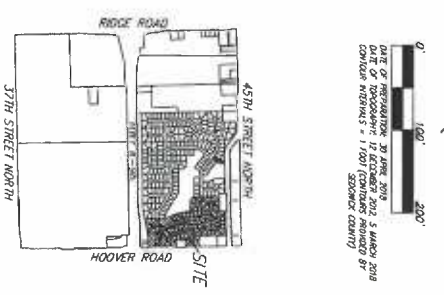
## EDGE WATER 3RD ADDITION

### WICHITA, SEDGWICK COUNTY, KANSAS



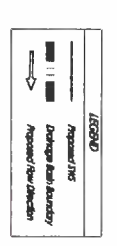
Basin ID	Area (Ac)	Developed Flowrates		
		2-yr CWA	10-yr CWA	100-yr CWA
1	1.1	7.1	7.1	7.1
2	1.3	4.2	4.2	4.2
3	1.3	5.2	4.2	7.3
4	6.8	11	18	31
5	3.4	4.5	1.2	20
6	1.2	2.3	3.5	6.7
7	1.1	2.1	3.4	4.2
8	2.2	4.4	7.4	13
9	1.4	2.7	4.5	7.8
10	2.2	4.4	7.4	13
11	3.2	6.4	11	20
12	1.7	3.3	4.2	6.2
13	0.2	0.2	1.0	1.7
14	0.4	0.8	1.3	2.2
15	0.4	0.8	1.3	2.2
16	0.6	1.1	1.5	3.4
17	3.2	6.1	10	18
18	1.5	2.5	4.5	8.4
19	1.1	2.1	3.5	6.2
20	2.9	5.1	9	16
21	2.0	3.8	6.2	11
<b>TOTAL</b>	<b>30.2</b>	<b>73</b>	<b>127</b>	<b>229</b>

MAIN DRAINAGE BASIN	
Basin ID	1
Area (Ac)	1.1
Flowrate (cfs)	7.1
Flowrate (MGD)	0.0008
Flowrate (MGD)	0.0008
Flowrate (MGD)	0.0008



BOUNDARIES IN RED: EDGE OF POWER POLE  
 50' WEST OF THE SOUTHWEST CORNER OF  
 RESERVE 'C'. DO NOT WATER AND  
 ELEVATION = 1135.24 (NOV03)

**NOTES:** There is no SWA pool located on the property at this site.  
 Water Quality will be achieved by two ways. First, the water quality index will be used to monitor the water quality. Second, the water quality index will be used to monitor the water quality.  
 The flow will be used to determine the flow rate for the pipe.  
 The depth will be used to determine the depth of the pipe.  
 For more information on the engineering design of this project, please contact the engineer of record.



*add a note*  
*Are all elevations shown are NAVD83?*  
*I see the plot calls*  
*lot grade is NAVD29*  
*For modern standards other*  
*may be using NAD83*  
*ADD NAVD83 TO PLOT TITLE*